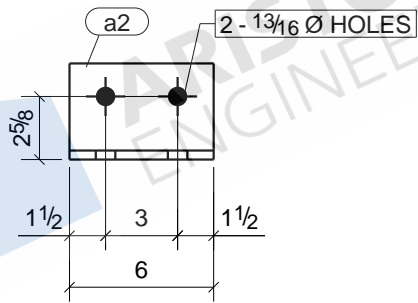
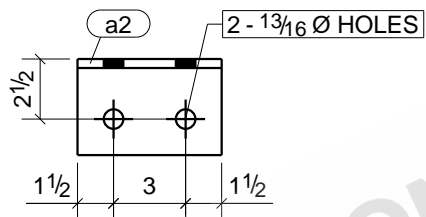


28	B2
2	B4
4	B40
Qty.	In Assembly

a1	L4X4X3/8	A36	34	0'-9"	150	7
MARK	SIZE	GRADE	QTY.	LENGTH	AREA	WEIGHT
MATERIAL LIST FOR WORKSHOP				TOTALS	0 in ²	0 lb/ft

DRAWING No. **a1**

JOB No.		DESCRIPTION	ANGLE
DRAWN BY		REVISION No.	
DATE DRAWN		REVISION DATE	



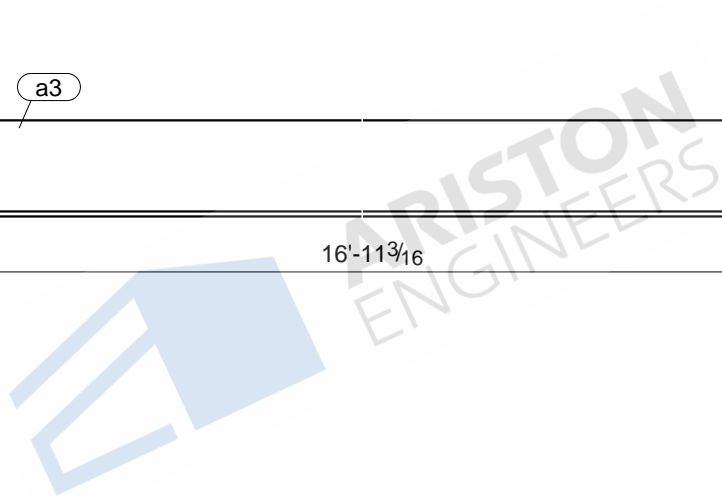
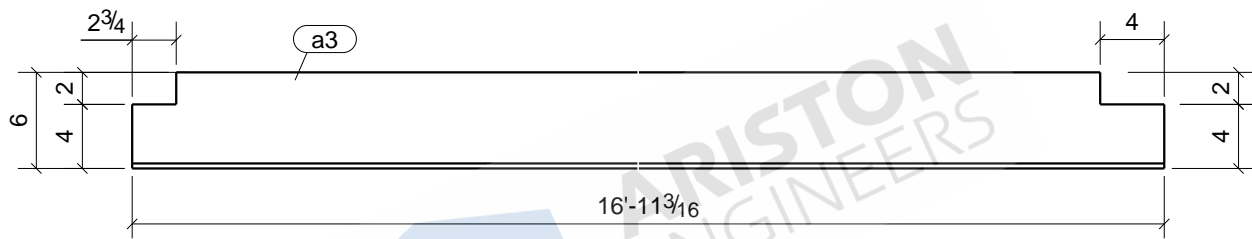
4	B1
28	B2
Qty.	In Assembly

a2	L4X4X3/8	A36	32	0'-6"	102	5	
MARK	SIZE	GRADE	QTY.	LENGTH	AREA	WEIGHT	
MATERIAL LIST FOR WORKSHOP					TOTALS	0 in ²	0 lb/ft

DRAWING No. **a2**

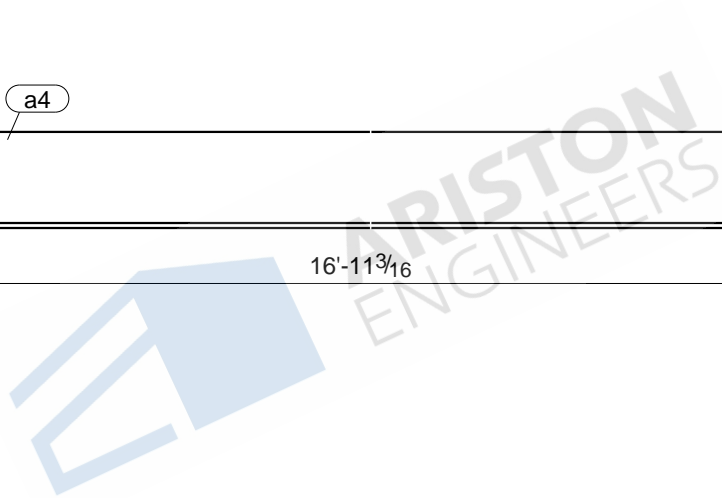
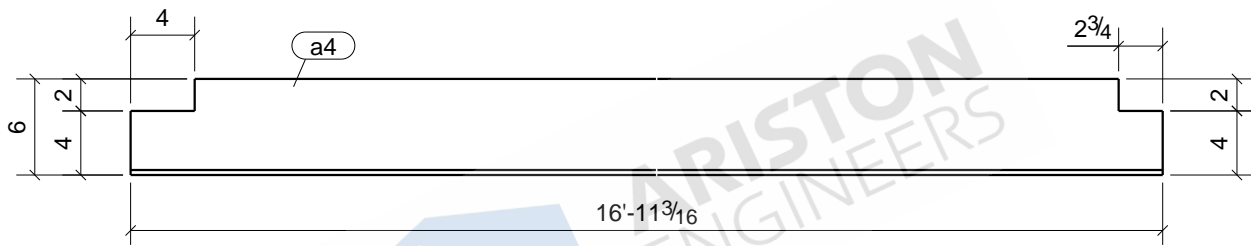
JOB No.		DESCRIPTION	ANGLE
DRAWN BY		REVISION No.	
DATE DRAWN		REVISION DATE	

Tekla Structures



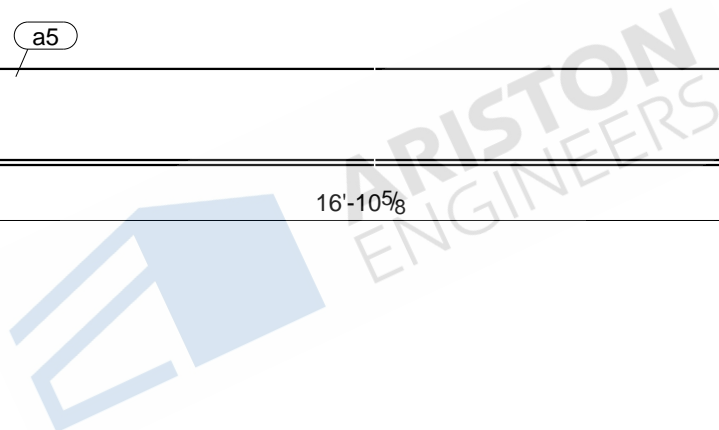
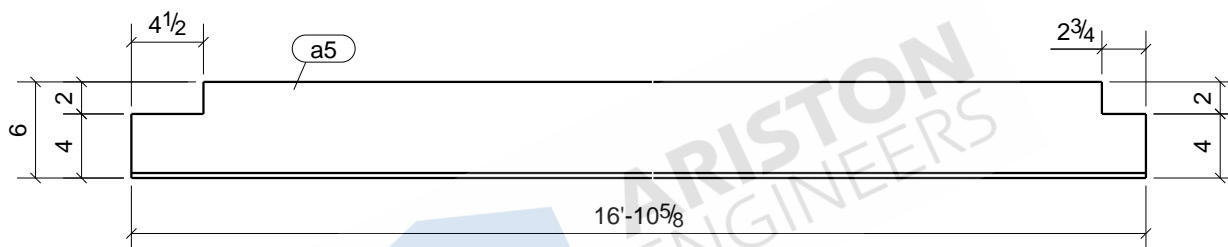
						1	B14
						Qty.	In Assembly
a3	L6X3-1/2X5/16	A36	1	16'-11 3/16"	3839		167
MARK	SIZE	GRADE	QTY.	LENGTH	AREA		WEIGHT
MATERIAL LIST FOR WORKSHOP					TOTALS	0 in ²	0 lb/ft

Tekla Structures	DRAWING No.		a3			
	JOB No.		DESCRIPTION	ANGLE		
	DRAWN BY		REVISION No.			
	DATE DRAWN		REVISION DATE			



						1	B34
						Qty.	In Assembly
a4	L6X3-1/2X5/16	A36	1	16'-11 3/16"	3839	167	
MARK	SIZE	GRADE	QTY.	LENGTH	AREA	WEIGHT	
MATERIAL LIST FOR WORKSHOP					TOTALS	0 in ²	0 lb/ft
				DRAWING No.	a4		
				JOB No.		DESCRIPTION	ANGLE
				DRAWN BY		REVISION No.	
				DATE DRAWN		REVISION DATE	

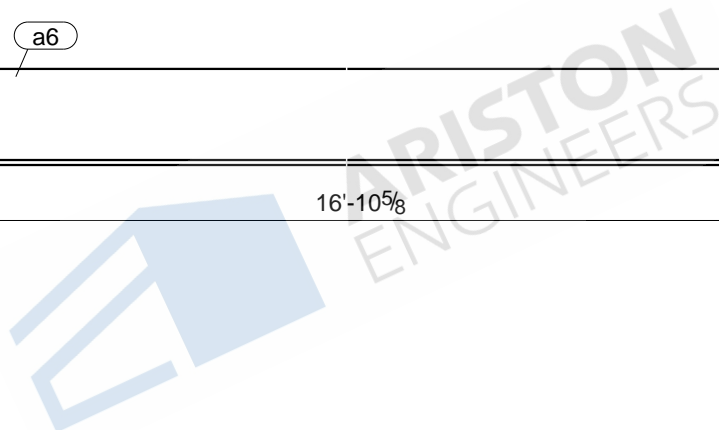
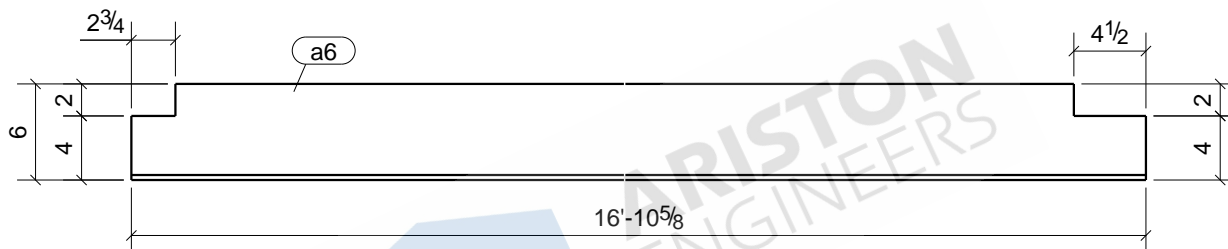
Tekla Structures



						1	B15
						Qty.	In Assembly
a5	L6X3-1/2X5/16	A36	1	16'-10 5/8"	3826		166
MARK	SIZE	GRADE	QTY.	LENGTH	AREA		WEIGHT
MATERIAL LIST FOR WORKSHOP					TOTALS	0 in ²	0 lb/ft

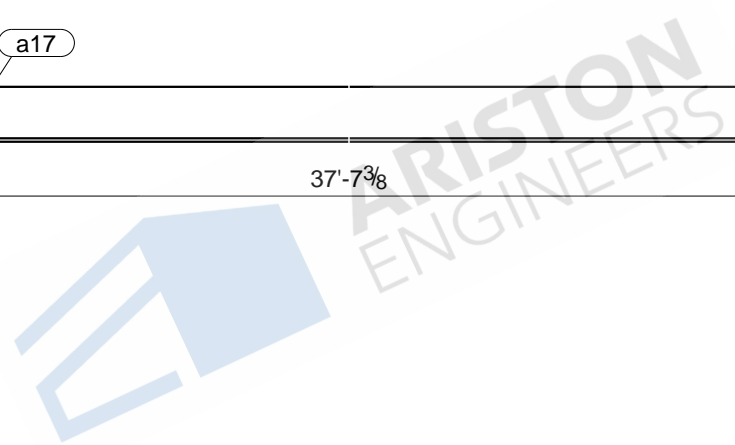
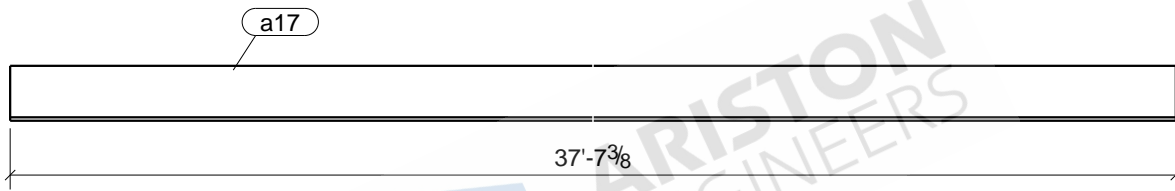
Tekla Structures

DRAWING No.		a5	
JOB No.		DESCRIPTION	ANGLE
DRAWN BY		REVISION No.	
DATE DRAWN		REVISION DATE	



						1	B31
						Qty.	In Assembly
a6	L6X3-1/2X5/16	A36	1	16'-10 5/8"	3826		166
MARK	SIZE	GRADE	QTY.	LENGTH	AREA	WEIGHT	
MATERIAL LIST FOR WORKSHOP					TOTALS	0 in ²	0 lb/ft

Tekla Structures	DRAWING No.		a6			
	JOB No.		DESCRIPTION	ANGLE		
	DRAWN BY		REVISION No.			
	DATE DRAWN		REVISION DATE			

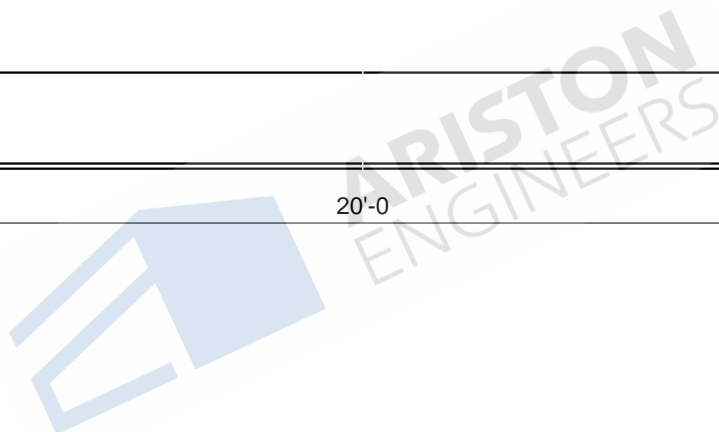
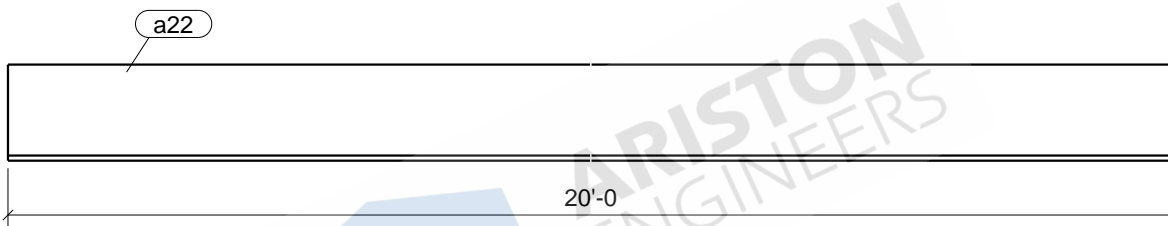


1	B5
1	B42
Qty.	In Assembly

a17	L4X3X1/4	A36	2	37'-7 3/8"	6323	216
MARK	SIZE	GRADE	QTY.	LENGTH	AREA	WEIGHT
MATERIAL LIST FOR WORKSHOP				TOTALS	0 in ²	0 lb/ft

Tekla Structures

DRAWING No.		a17	
JOB No.		DESCRIPTION	ANGLE
DRAWN BY		REVISION No.	
DATE DRAWN		REVISION DATE	



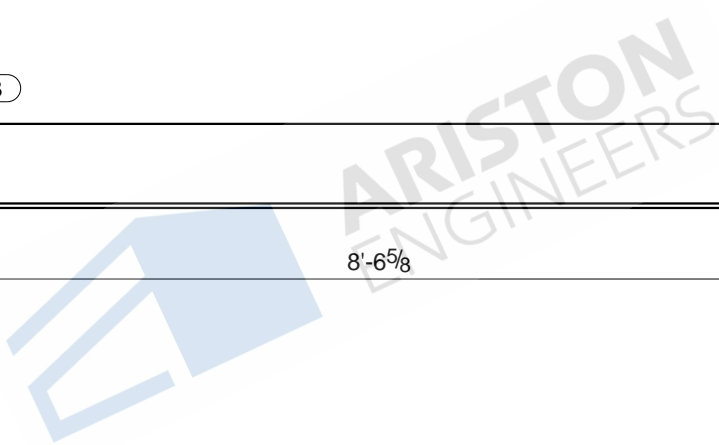
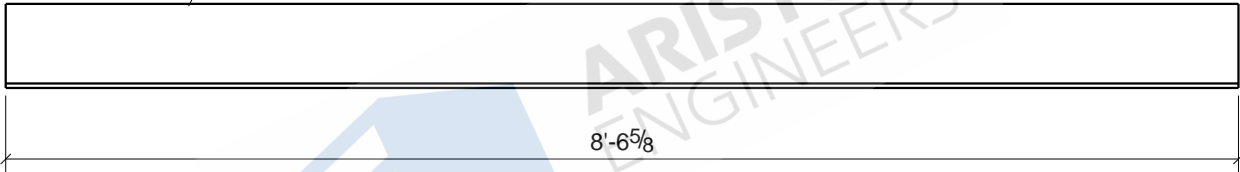
2	B10
2	B36
Qty.	In Assembly

a22	L7X4X3/8	A36	4	20'-0"	5288	272
MARK	SIZE	GRADE	QTY.	LENGTH	AREA	WEIGHT
MATERIAL LIST FOR WORKSHOP				TOTALS	0 in ²	0 lb/ft

Tekla Structures

DRAWING No.		a22	
JOB No.		DESCRIPTION	ANGLE
DRAWN BY		REVISION No.	
DATE DRAWN		REVISION DATE	

a23



1	B10
1	B36
Qty.	In Assembly

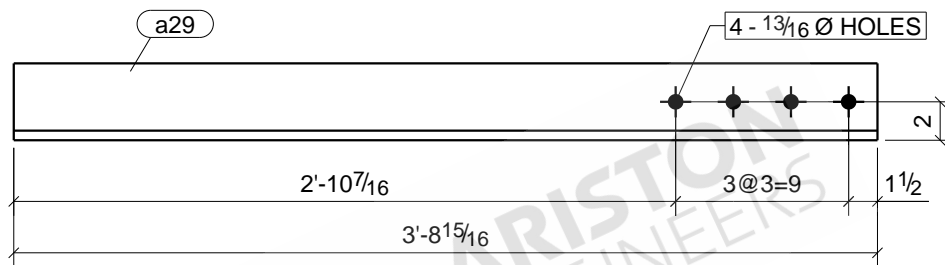
a23	L7X4X3/8	A36	2	8'-6 5/8"	2266	116
MARK	SIZE	GRADE	QTY.	LENGTH	AREA	WEIGHT
MATERIAL LIST FOR WORKSHOP				TOTALS	0 in ²	0 lb/ft

Tekla Structures

DRAWING No.

a23

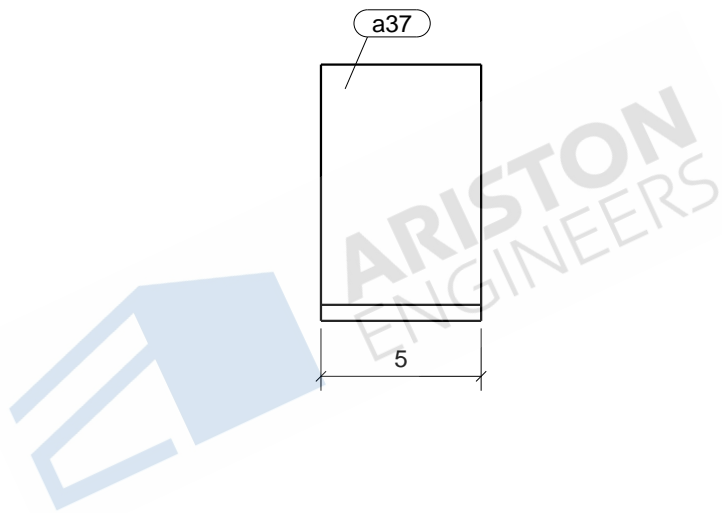
JOB No.	DESCRIPTION	ANGLE
DRAWN BY	REVISION No.	
DATE DRAWN	REVISION DATE	



						2	HG1
						Qty.	In Assembly
a29	L4X4X1/2	A36	2	3'-8 15/16"	726		48
MARK	SIZE	GRADE	QTY.	LENGTH	AREA		WEIGHT
MATERIAL LIST FOR WORKSHOP					TOTALS	0 in ²	0 lb/ft

DRAWING No.		a29	
JOB No.		DESCRIPTION	ANGLE
DRAWN BY		REVISION No.	
DATE DRAWN		REVISION DATE	

Tekla Structures

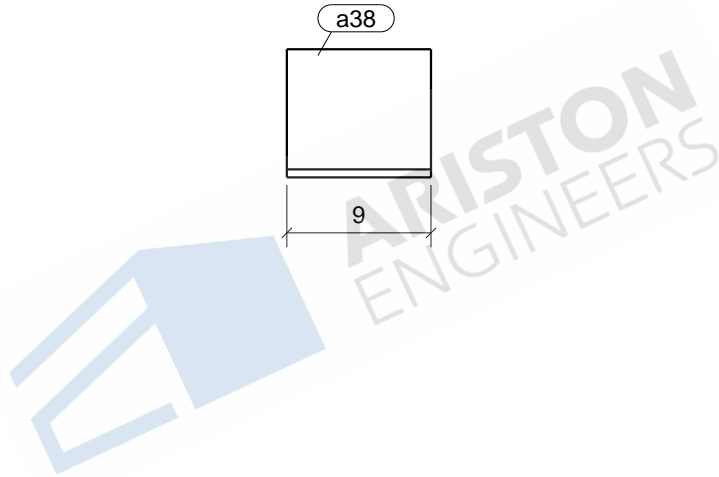


2	C1
2	C3
Qty.	In Assembly

a37	L8X8X1/2	A36	4	0'-5"	175	11
MARK	SIZE	GRADE	QTY.	LENGTH	AREA	WEIGHT
MATERIAL LIST FOR WORKSHOP				TOTALS	0 in ²	0 lb/ft

Tekla Structures

DRAWING No.		a37	
JOB No.		DESCRIPTION	ANGLE
DRAWN BY		REVISION No.	
DATE DRAWN		REVISION DATE	

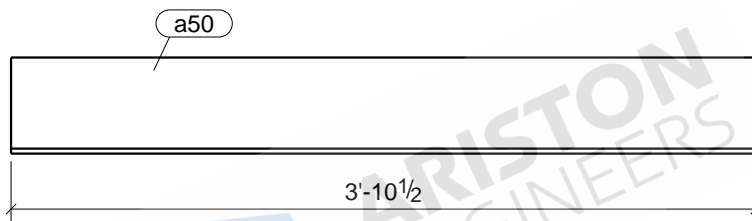


1	C4
1	C9
Qty.	In Assembly

a38	L8X8X1/2	A36	2	0'-9"	303	20
MARK	SIZE	GRADE	QTY.	LENGTH	AREA	WEIGHT
MATERIAL LIST FOR WORKSHOP				TOTALS	0 in ²	0 lb/ft

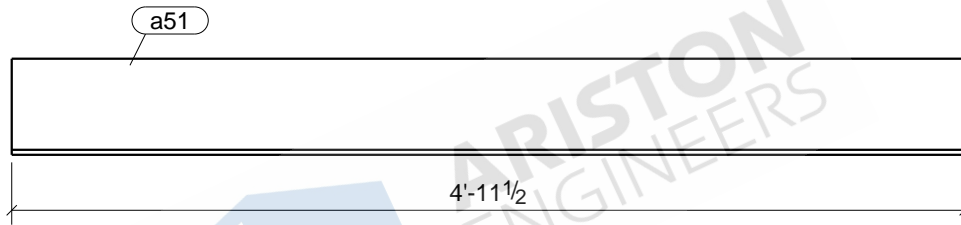
Tekla Structures

DRAWING No.		a38	
JOB No.		DESCRIPTION	ANGLE
DRAWN BY		REVISION No.	
DATE DRAWN		REVISION DATE	



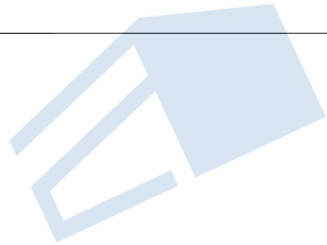
						1	FR3
						Qty.	In Assembly
a50	L6X4X5/16	A36	1	3'-10 1/2"	936	40	
MARK	SIZE	GRADE	QTY.	LENGTH	AREA	WEIGHT	
MATERIAL LIST FOR WORKSHOP					TOTALS	0 in ²	0 lb/ft
				DRAWING No.	a50		
				JOB No.		DESCRIPTION	ANGLE
				DRAWN BY		REVISION No.	
				DATE DRAWN		REVISION DATE	

Tekla Structures



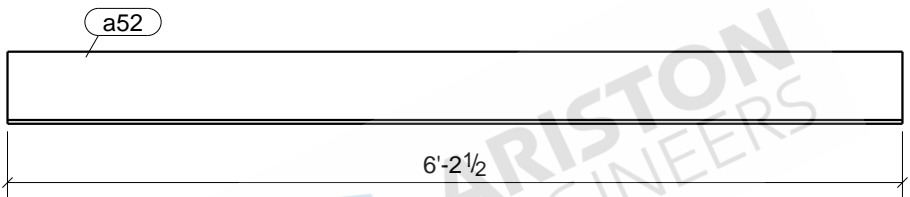
a51

4'-11 1/2"



						1	FR4
						Qty.	In Assembly
a51	L6X4X5/16	A36	1	4'-11 1/2"	1196		51
MARK	SIZE	GRADE	QTY.	LENGTH	AREA	WEIGHT	
MATERIAL LIST FOR WORKSHOP					TOTALS	0 in ²	0 lb/ft
				DRAWING No.	a51		
				JOB No.		DESCRIPTION	ANGLE
				DRAWN BY		REVISION No.	
				DATE DRAWN		REVISION DATE	

Tekla Structures



a52

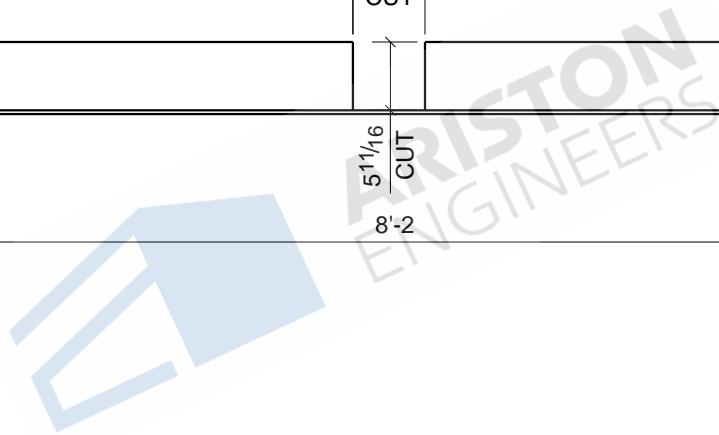
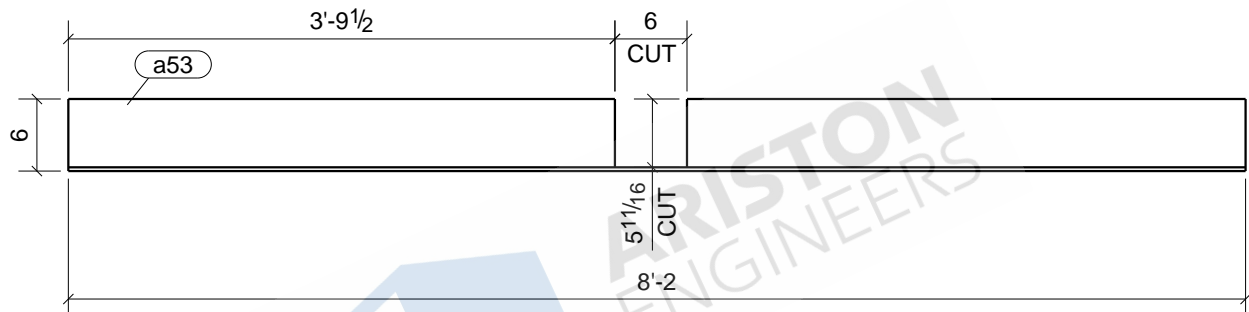
6'-2 1/2"



ARISTON ENGINEERS

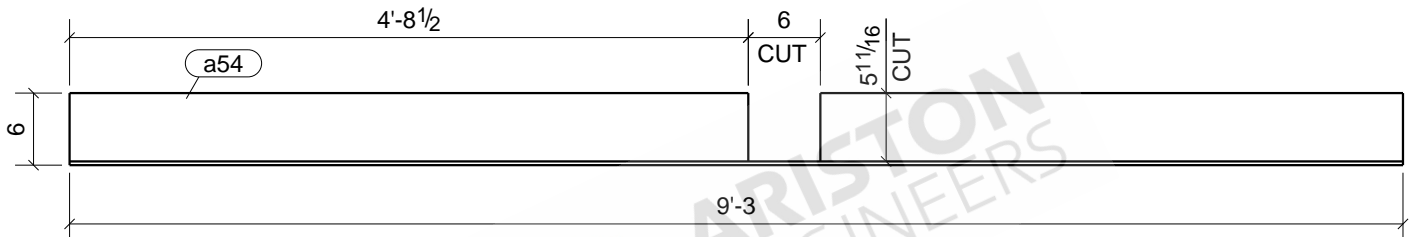
						1	FR7
						Qty.	In Assembly
a52	L6X4X5/16	A36	1	6'-2 1/2"	1496		64
MARK	SIZE	GRADE	QTY.	LENGTH	AREA	WEIGHT	
MATERIAL LIST FOR WORKSHOP					TOTALS	0 in ²	0 lb/ft
				DRAWING No.	a52		
				JOB No.		DESCRIPTION	ANGLE
				DRAWN BY		REVISION No.	
				DATE DRAWN		REVISION DATE	

Tekla Structures



						1	FR4
						Qty.	In Assembly
a53	L6X4X5/16	A36	1	8'-2"	1901		84
MARK	SIZE	GRADE	QTY.	LENGTH	AREA		WEIGHT
MATERIAL LIST FOR WORKSHOP					TOTALS	0 in ²	0 lb/ft

Tekla Structures	DRAWING No.		a53	
	JOB No.		DESCRIPTION	ANGLE
	DRAWN BY		REVISION No.	
	DATE DRAWN		REVISION DATE	



						1	FR3
						Qty.	In Assembly
a54	L6X4X5/16	A36	1	9'-3"	2161		95
MARK	SIZE	GRADE	QTY.	LENGTH	AREA		WEIGHT
MATERIAL LIST FOR WORKSHOP					TOTALS	0 in ²	0 lb/ft

Tekla Structures

DRAWING No.

a54

JOB No.

DESCRIPTION

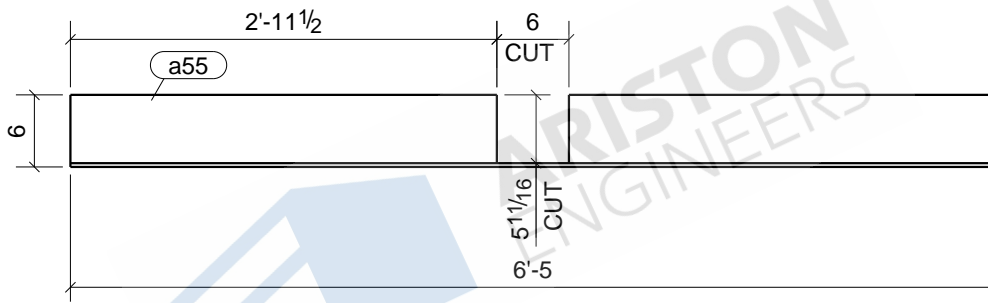
ANGLE

DRAWN BY

REVISION No.

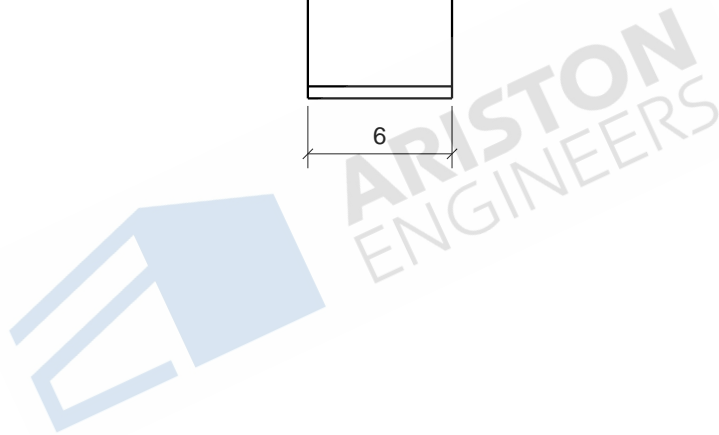
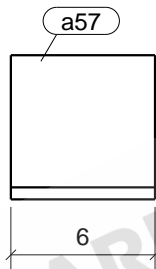
DATE DRAWN

REVISION DATE



						1	FR7
						Qty.	In Assembly
a55	L6X4X5/16	A36	1	6'-5"	1481	66	
MARK	SIZE	GRADE	QTY.	LENGTH	AREA	WEIGHT	
MATERIAL LIST FOR WORKSHOP					TOTALS	0 in ²	0 lb/ft
				DRAWING No.	a55		
				JOB No.		DESCRIPTION	ANGLE
				DRAWN BY		REVISION No.	
				DATE DRAWN		REVISION DATE	

Tekla Structures

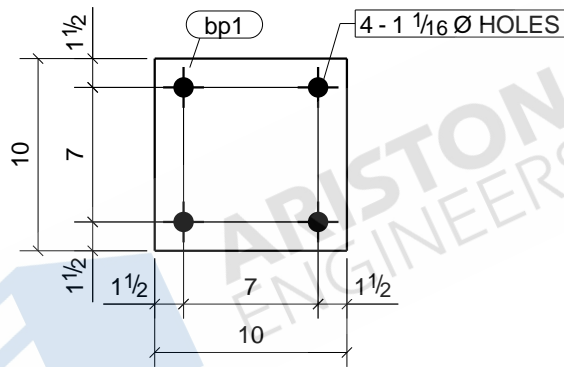


2	FR1
2	FR2
4	FR3
4	FR4
2	FR5
2	FR6
4	FR7
Qty.	In Assembly

a57	L6X4X1/2	A36	20	0'-6"	129	8
MARK	SIZE	GRADE	QTY.	LENGTH	AREA	WEIGHT
MATERIAL LIST FOR WORKSHOP				TOTALS	0 in ²	0 lb/ft

DRAWING No. **a57**

JOB No.		DESCRIPTION	ANGLE
DRAWN BY		REVISION No.	
DATE DRAWN		REVISION DATE	

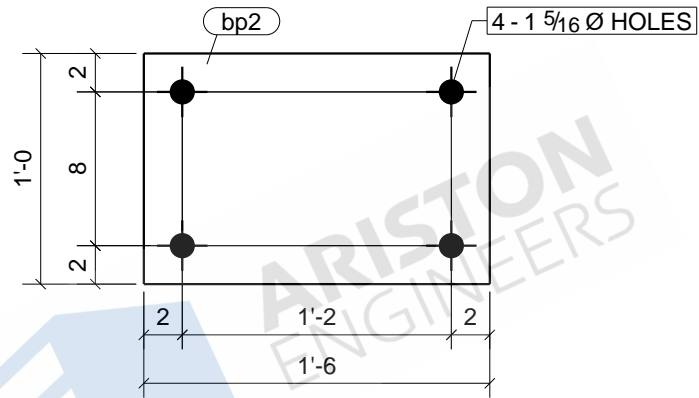


1	C5
1	C8
Qty.	In Assembly

MARK	SIZE	GRADE	QTY.	LENGTH	AREA	WEIGHT	
bp1	PL3/4"X10"	A36	2	0'-10"	230	21	
MATERIAL LIST FOR WORKSHOP					TOTALS	0 in ²	0 lb/ft

DRAWING No. **bp1**

JOB No.		DESCRIPTION	BASE PLATE
DRAWN BY		REVISION No.	
DATE DRAWN		REVISION DATE	

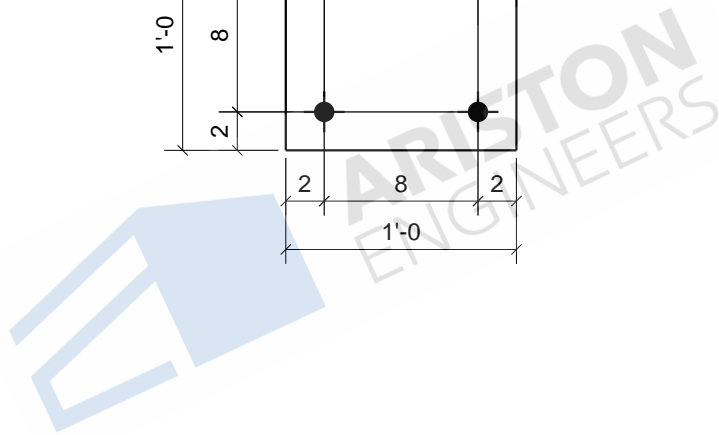
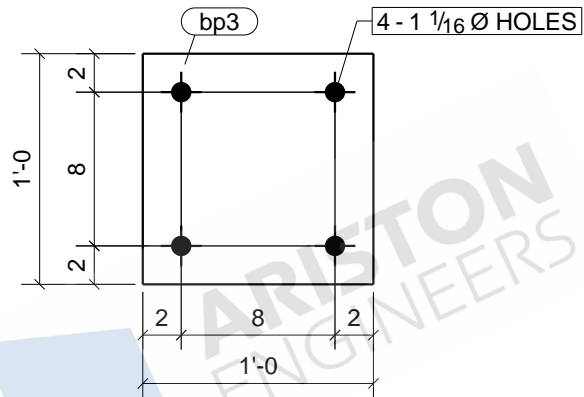


1	C4
2	C6
1	C9
Qty.	In Assembly

bp2	PL1 1/2"X12"	A36	4	1'-6"	522	92
MARK	SIZE	GRADE	QTY.	LENGTH	AREA	WEIGHT
MATERIAL LIST FOR WORKSHOP				TOTALS	0 in ²	0 lb/ft

DRAWING No. **bp2**

JOB No.		DESCRIPTION	BASE PLATE
DRAWN BY		REVISION No.	
DATE DRAWN		REVISION DATE	



2	C2
1	C10
Qty.	In Assembly

MARK	SIZE	GRADE	QTY.	LENGTH	AREA	WEIGHT	
bp3	PL7/8"X12"	A36	3	1'-0"	330	36	
MATERIAL LIST FOR WORKSHOP					TOTALS	0 in ²	0 lb/ft

Tekla Structures

DRAWING No.

bp3

JOB No.

DESCRIPTION

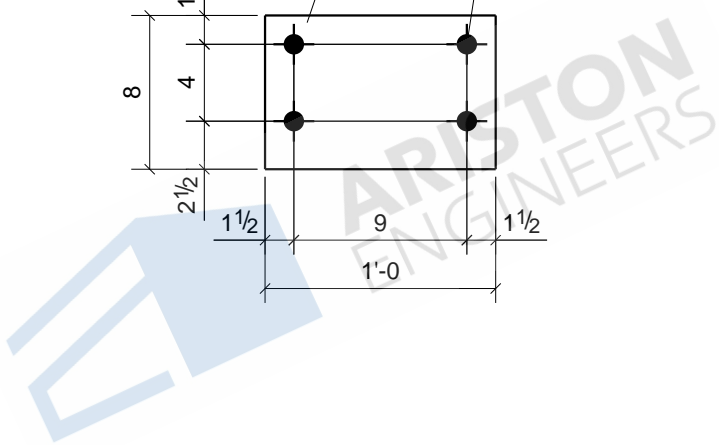
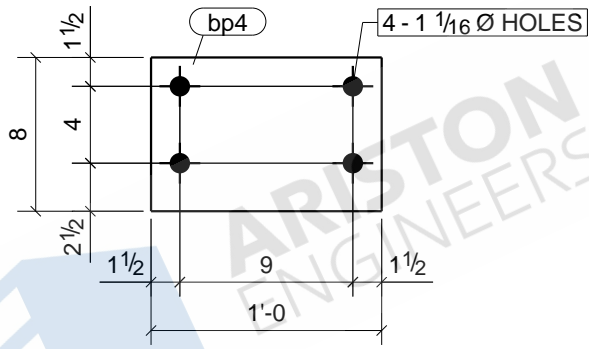
BASE PLATE

DRAWN BY

REVISION No.

DATE DRAWN

REVISION DATE

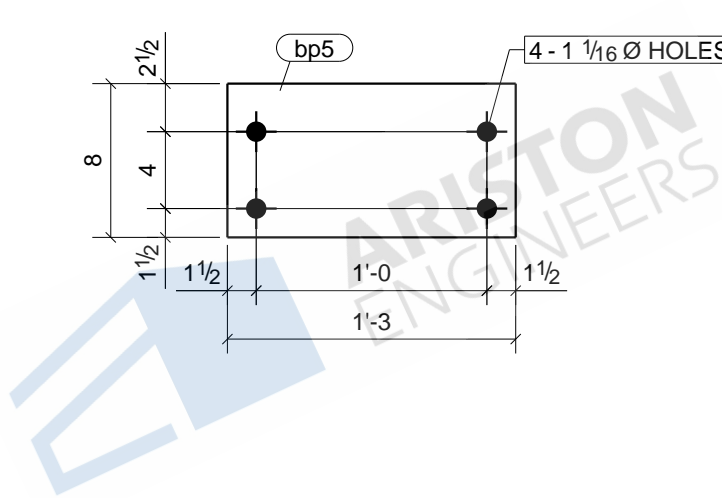
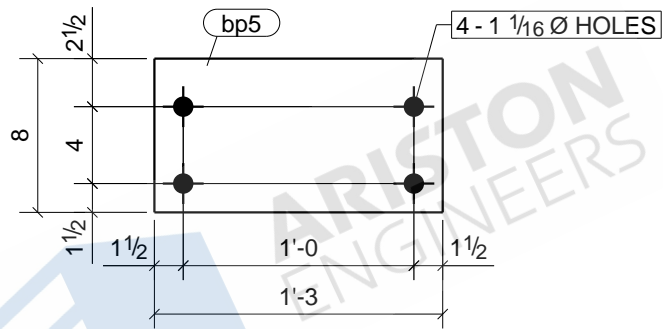


2	C1
2	C3
Qty.	In Assembly

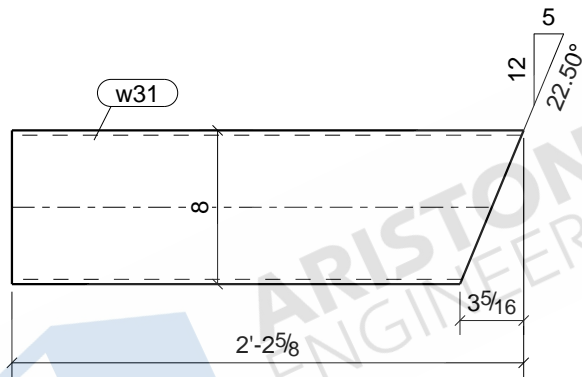
MARK	SIZE	GRADE	QTY.	LENGTH	AREA	WEIGHT	
bp4	PL7/8"X8"	A36	4	1'-0"	227	24	
MATERIAL LIST FOR WORKSHOP					TOTALS	0 in ²	0 lb/ft

Tekla Structures

DRAWING No.		bp4	
JOB No.		DESCRIPTION	BASE PLATE
DRAWN BY		REVISION No.	
DATE DRAWN		REVISION DATE	

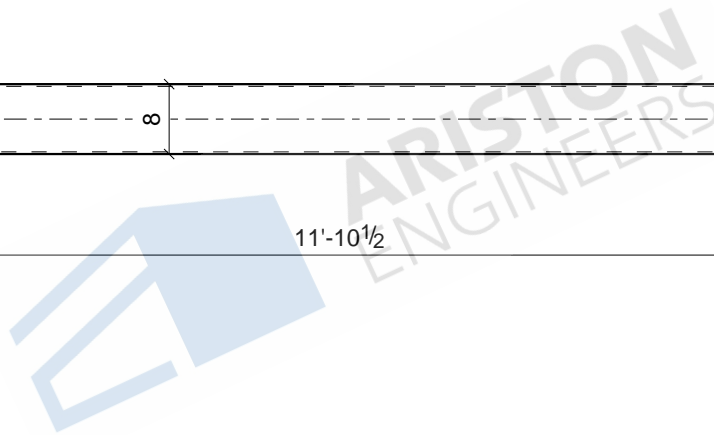
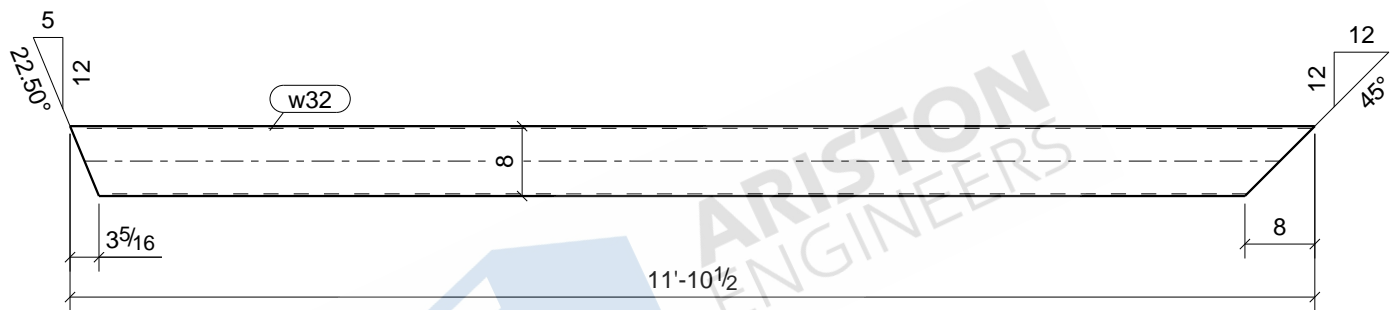


						2	C7
						Qty.	In Assembly
bp5	PL7/8"X8"	A36	2	1'-3"	280	30	
MARK	SIZE	GRADE	QTY.	LENGTH	AREA	WEIGHT	
MATERIAL LIST FOR WORKSHOP					TOTALS	0 in ²	0 lb/ft
				DRAWING No.	bp5		
				JOB No.		DESCRIPTION	BASE PLATE
				DRAWN BY		REVISION No.	
				DATE DRAWN		REVISION DATE	



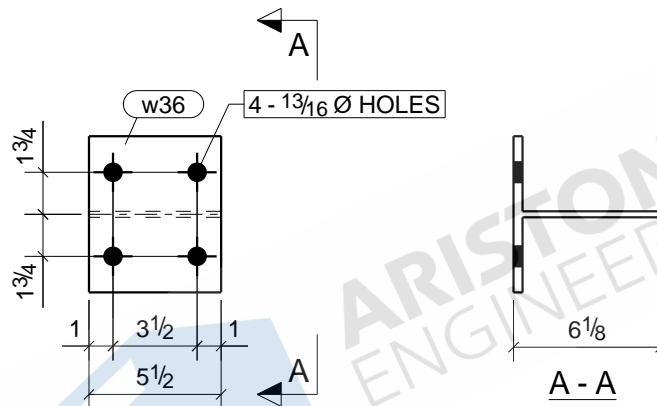
						2	GBL2
						Qty.	In Assembly
w31	HSS8X6X1/4	A500-GR.C	2	2'-2 5/8"	725		47
MARK	SIZE	GRADE	QTY.	LENGTH	AREA		WEIGHT
MATERIAL LIST FOR WORKSHOP					TOTALS	0 in ²	0 lb/ft

Tekla Structures	DRAWING No.		w31	
	JOB No.		DESCRIPTION	BEAM
	DRAWN BY		REVISION No.	
	DATE DRAWN		REVISION DATE	



						1	GBL2
						Qty.	In Assembly
w32	HSS8X6X1/4	A500-GR.C	1	11'-10 1/2"	3881	249	
MARK	SIZE	GRADE	QTY.	LENGTH	AREA	WEIGHT	
MATERIAL LIST FOR WORKSHOP					TOTALS	0 in ²	0 lb/ft
				DRAWING No.	w32		
				JOB No.		DESCRIPTION	BEAM
				DRAWN BY		REVISION No.	
				DATE DRAWN		REVISION DATE	

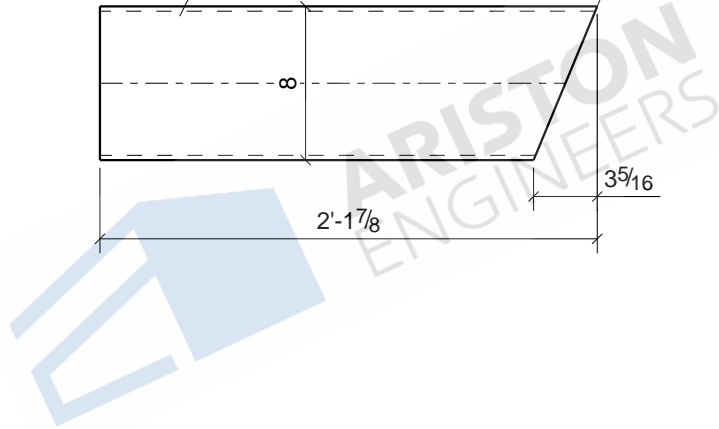
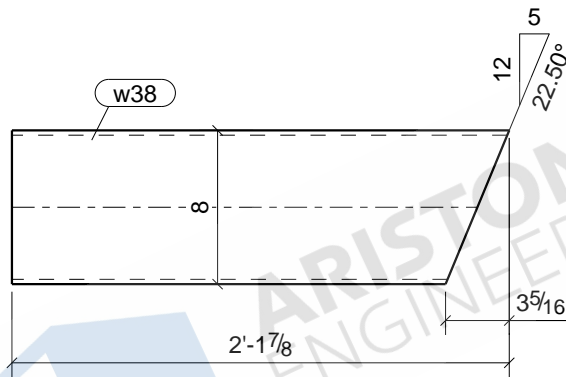
Tekla Structures



						2	HG1
						Qty.	In Assembly
w36	WT6X13	A992	2	0'-5 1/2"		147	6
MARK	SIZE	GRADE	QTY.	LENGTH		AREA	WEIGHT
MATERIAL LIST FOR WORKSHOP					TOTALS	0 in ²	0 lb/ft

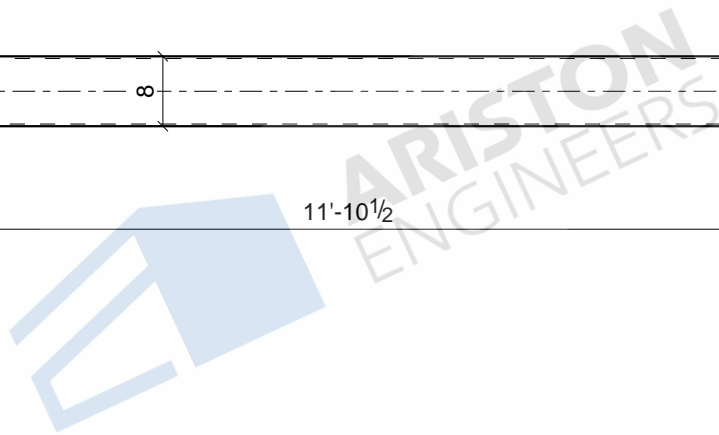
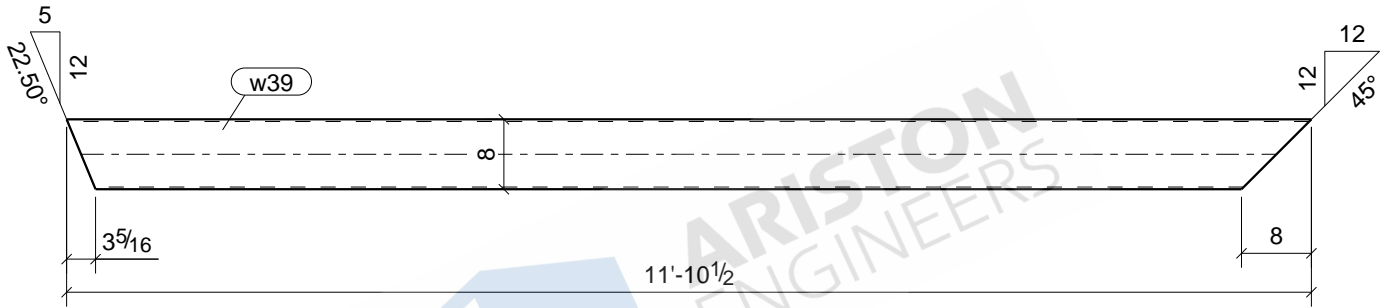
DRAWING No. **w36**

JOB No.		DESCRIPTION	BEAM
DRAWN BY		REVISION No.	
DATE DRAWN		REVISION DATE	



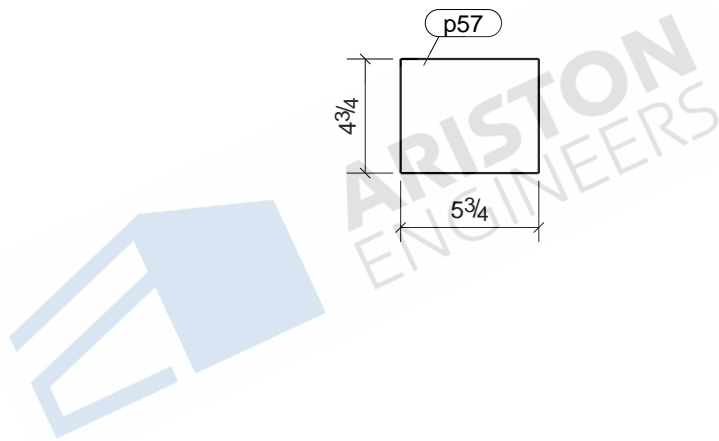
						2	GBL1	
						Qty.	In Assembly	
w38	HSS8X4X1/4	A500-GR.C	2	2'-1 7/8"		599	38	
MARK	SIZE	GRADE	QTY.	LENGTH		AREA	WEIGHT	
MATERIAL LIST FOR WORKSHOP						TOTALS	0 in ²	0 lb/ft

Tekla Structures	DRAWING No.		w38		
	JOB No.		DESCRIPTION	BEAM	
	DRAWN BY		REVISION No.		
	DATE DRAWN		REVISION DATE		



						1	GBL1
						Qty.	In Assembly
w39	HSS8X4X1/4	A500-GR.C	1	11'-10 1/2"	3300		212
MARK	SIZE	GRADE	QTY.	LENGTH	AREA	WEIGHT	
MATERIAL LIST FOR WORKSHOP					TOTALS	0 in ²	0 lb/ft

Tekla Structures	DRAWING No.		w39			
	JOB No.		DESCRIPTION	BEAM		
	DRAWN BY		REVISION No.			
	DATE DRAWN		REVISION DATE			

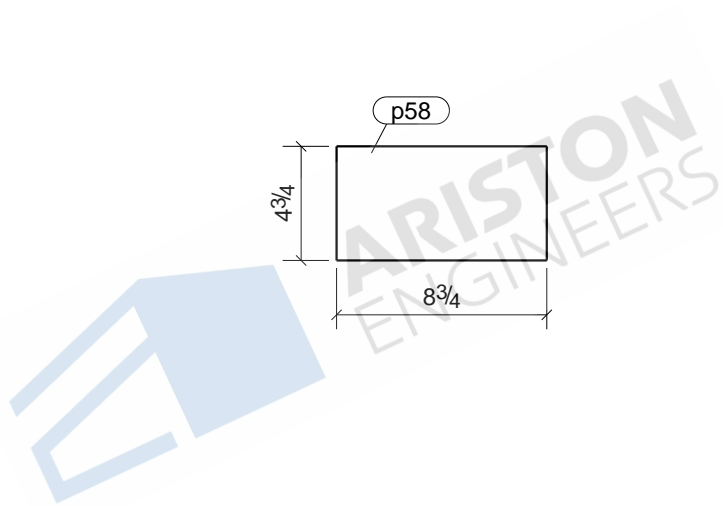


2	C1
2	C3
Qty.	In Assembly

p57	PL3/4"X4 3/4"	A36	4	0'-5 3/4"	70	6
MARK	SIZE	GRADE	QTY.	LENGTH	AREA	WEIGHT
MATERIAL LIST FOR WORKSHOP				TOTALS	0 in ²	0 lb/ft

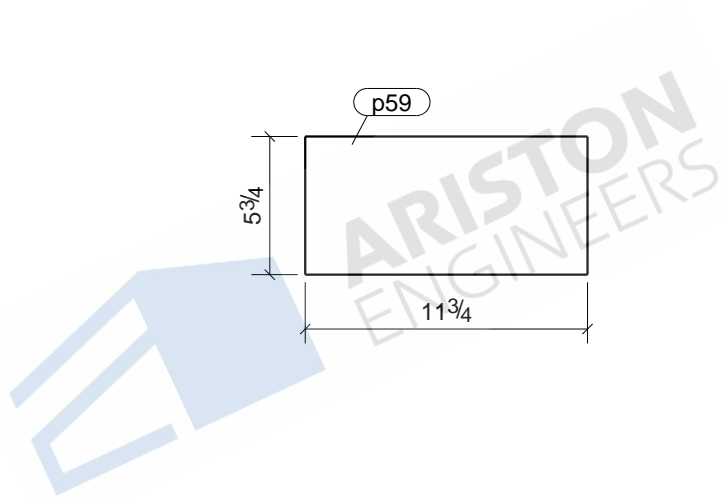
Tekla Structures

DRAWING No.		p57	
JOB No.		DESCRIPTION	CAP PLATE
DRAWN BY		REVISION No.	
DATE DRAWN		REVISION DATE	



						2	C7
						Qty.	In Assembly
p58	PL3/8"X4 3/4"	A36	2	0'-8 3/4"	93	4	
MARK	SIZE	GRADE	QTY.	LENGTH	AREA	WEIGHT	
MATERIAL LIST FOR WORKSHOP					TOTALS	0 in ²	0 lb/ft
				DRAWING No.	p58		
				JOB No.	DESCRIPTION	CAP PLATE	
				DRAWN BY	REVISION No.		
				DATE DRAWN	REVISION DATE		

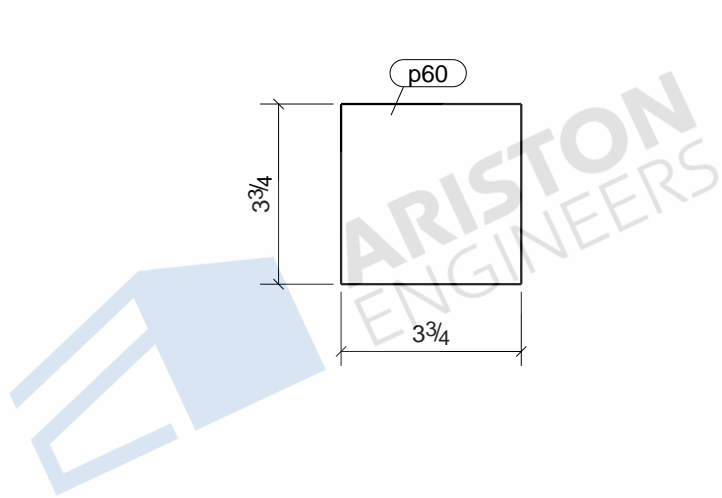
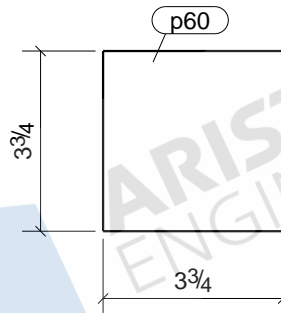
Tekla Structures



2	LB3
Qty.	In Assembly
148	7
0 in ²	0 lb/ft

p59	PL3/8"X5 3/4"	A36	2	0'-11 3/4"	148	7
MARK	SIZE	GRADE	QTY.	LENGTH	AREA	WEIGHT
MATERIAL LIST FOR WORKSHOP				TOTALS	0 in ²	0 lb/ft

Tekla Structures	DRAWING No.		p59			
	JOB No.		DESCRIPTION	CAP PLATE		
	DRAWN BY		REVISION No.			
	DATE DRAWN		REVISION DATE			



1	C5
1	C8
Qty.	In Assembly

p60	PL3/4"X3 3/4"	A36	2	0'-3 3/4"	39	3	
MARK	SIZE	GRADE	QTY.	LENGTH	AREA	WEIGHT	
MATERIAL LIST FOR WORKSHOP					TOTALS	0 in ²	0 lb/ft

Tekla Structures

DRAWING No.

p60

JOB No.

DESCRIPTION

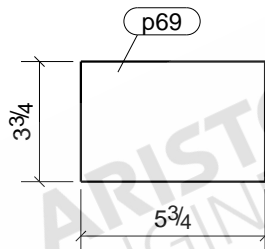
CAP PLATE

DRAWN BY

REVISION No.

DATE DRAWN

REVISION DATE



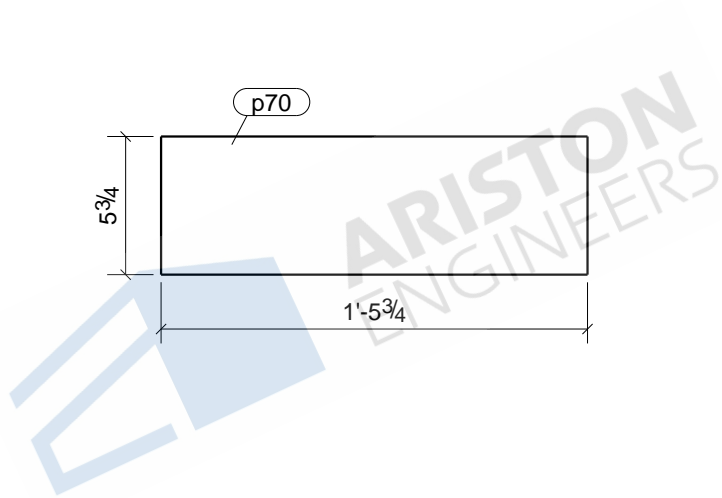
ARISTON ENGINEERS

1	B12
1	B35
Qty.	In Assembly

p69	PL1/4"X3 3/4"	A36	2	0'-5 3/4"	48	2
MARK	SIZE	GRADE	QTY.	LENGTH	AREA	WEIGHT
MATERIAL LIST FOR WORKSHOP				TOTALS	0 in ²	0 lb/ft

Tekla Structures

DRAWING No.		p69	
JOB No.		DESCRIPTION	CAP PLATE
DRAWN BY		REVISION No.	
DATE DRAWN		REVISION DATE	

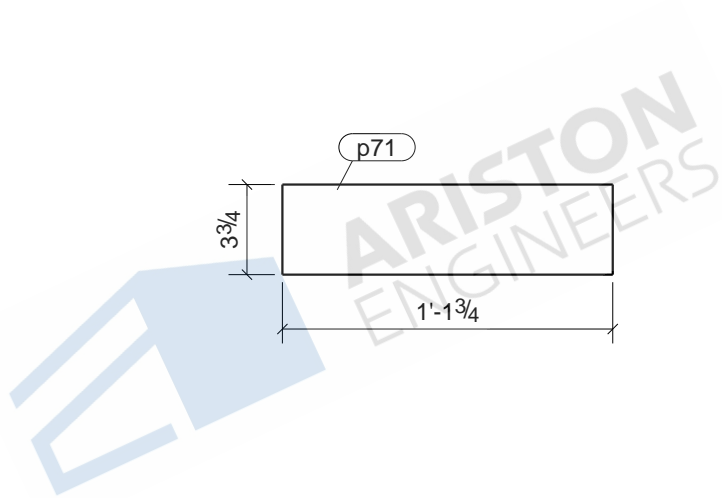


4	LB1
Qty.	In Assembly
216	7
0 in ²	0 lb/ft

p70	PL1/4"X5 3/4"	A36	4	1'-5 3/4"	216	7
MARK	SIZE	GRADE	QTY.	LENGTH	AREA	WEIGHT
MATERIAL LIST FOR WORKSHOP				TOTALS	0 in ²	0 lb/ft

Tekla Structures

DRAWING No.		p70	
JOB No.		DESCRIPTION	CAP PLATE
DRAWN BY		REVISION No.	
DATE DRAWN		REVISION DATE	

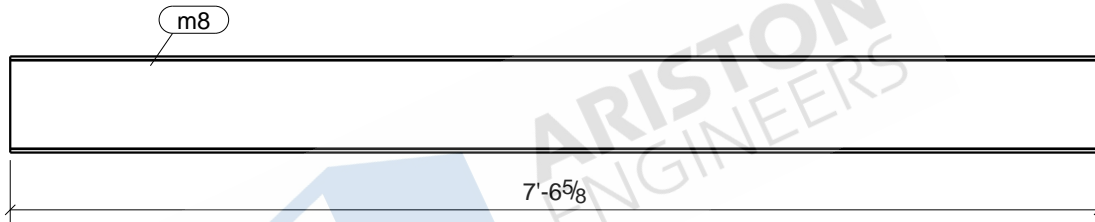


1	LB2
1	LB5
Qty.	In Assembly

p71	PL1/4"X3 3/4"	A36	2	1'-1 3/4"	112	4
MARK	SIZE	GRADE	QTY.	LENGTH	AREA	WEIGHT
MATERIAL LIST FOR WORKSHOP				TOTALS	0 in ²	0 lb/ft

Tekla Structures

DRAWING No.		p71	
JOB No.		DESCRIPTION	CAP PLATE
DRAWN BY		REVISION No.	
DATE DRAWN		REVISION DATE	



1	B7
1	B38
Qty.	In Assembly

m8	MC8X8.5	A36	2	7'-6 5/8"	2095	64
MARK	SIZE	GRADE	QTY.	LENGTH	AREA	WEIGHT
MATERIAL LIST FOR WORKSHOP				TOTALS	0 in ²	0 lb/ft

Tekla Structures

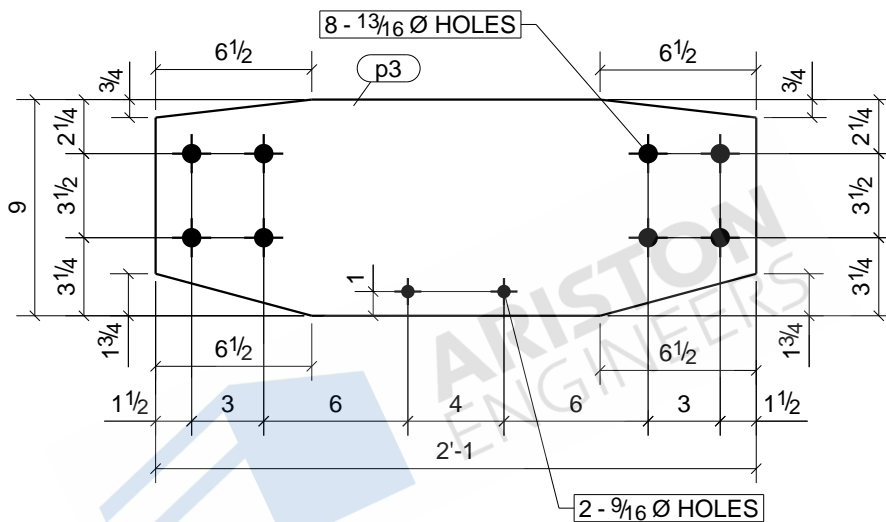
DRAWING No.

m8

JOB No.
DRAWN BY
DATE DRAWN

DESCRIPTION
REVISION No.
REVISION DATE

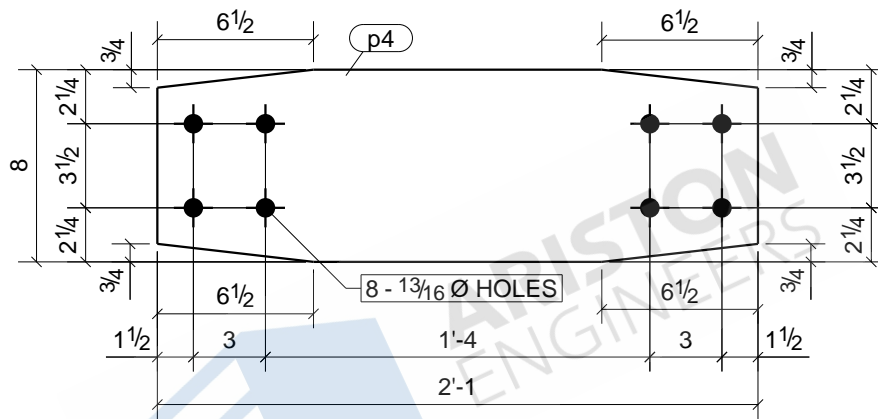
CHANNEL



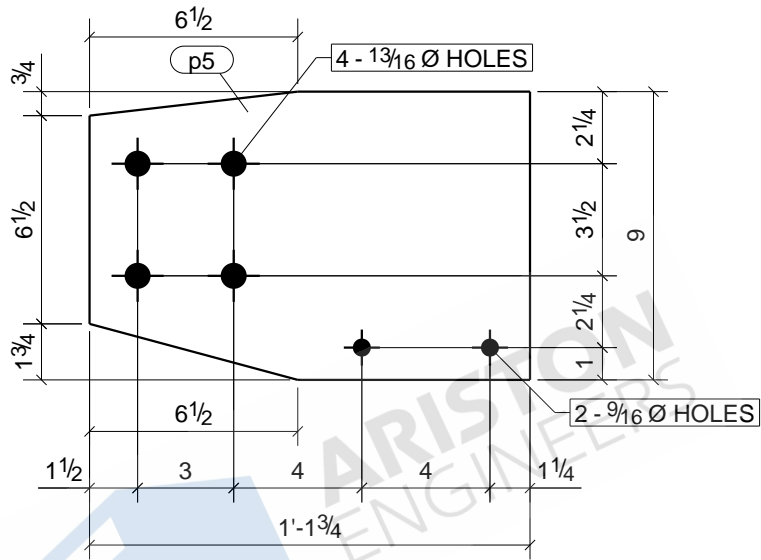
						1	C4
						Qty.	In Assembly
p3	PL1/2"X9"	A36	1	2'-1"	449	30	
MARK	SIZE	GRADE	QTY.	LENGTH	AREA	WEIGHT	
MATERIAL LIST FOR WORKSHOP					TOTALS	0 in ²	0 lb/ft

DRAWING No. **p3**

JOB No.		DESCRIPTION	PLATE
DRAWN BY		REVISION No.	
DATE DRAWN		REVISION DATE	



						2	C6
						Qty.	In Assembly
p4	PL1/2"x8"	A36	2	2'-1"		412	27
MARK	SIZE	GRADE	QTY.	LENGTH		AREA	WEIGHT
MATERIAL LIST FOR WORKSHOP						TOTALS	0 in ² 0 lb/ft
Tekla Structures				DRAWING No.		p4	
				JOB No.		DESCRIPTION	
				DRAWN BY		REVISION No.	
				DATE DRAWN		REVISION DATE	
				PLATE			

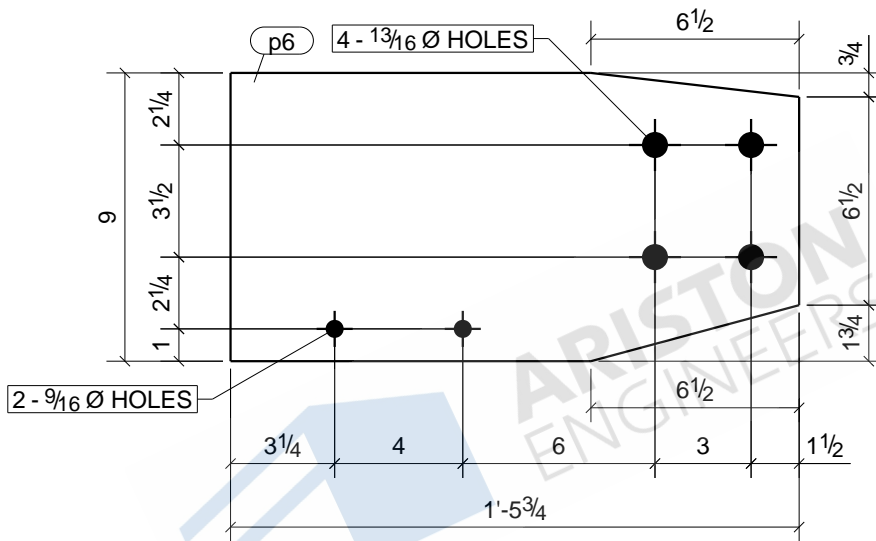


2	C2
1	C10
Qty.	In Assembly

MARK	SIZE	GRADE	QTY.	LENGTH	AREA	WEIGHT	
p5	PL1/2"X9"	A36	3	1'-1 3/4"	253	16	
MATERIAL LIST FOR WORKSHOP					TOTALS	0 in ²	0 lb/ft

DRAWING No. **p5**

JOB No.	DESCRIPTION	PLATE
DRAWN BY	REVISION No.	
DATE DRAWN	REVISION DATE	

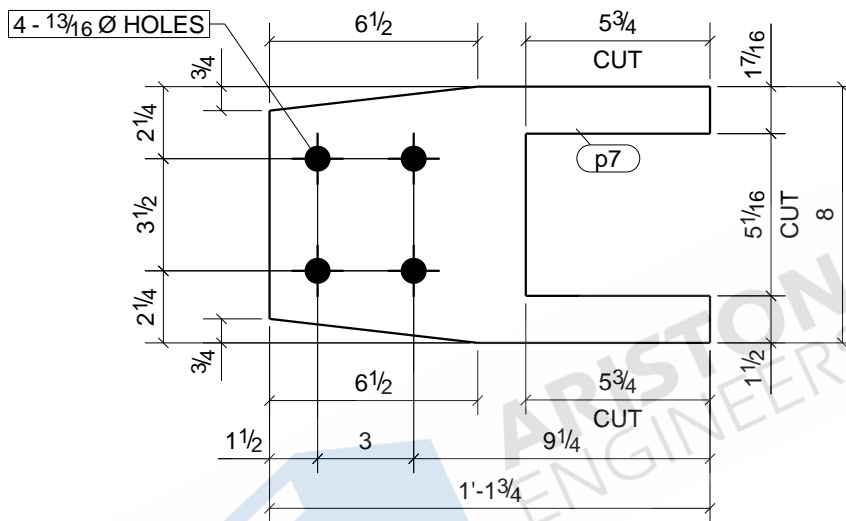


1	C9
Qty.	In Assembly
329	21
0 in ²	0 lb/ft

p6	PL1/2"X9"	A36	1	1'-5 3/4"	329	21
MARK	SIZE	GRADE	QTY.	LENGTH	AREA	WEIGHT
MATERIAL LIST FOR WORKSHOP					TOTALS	

DRAWING No. **p6**

JOB No.	DESCRIPTION	PLATE
DRAWN BY	REVISION No.	
DATE DRAWN	REVISION DATE	

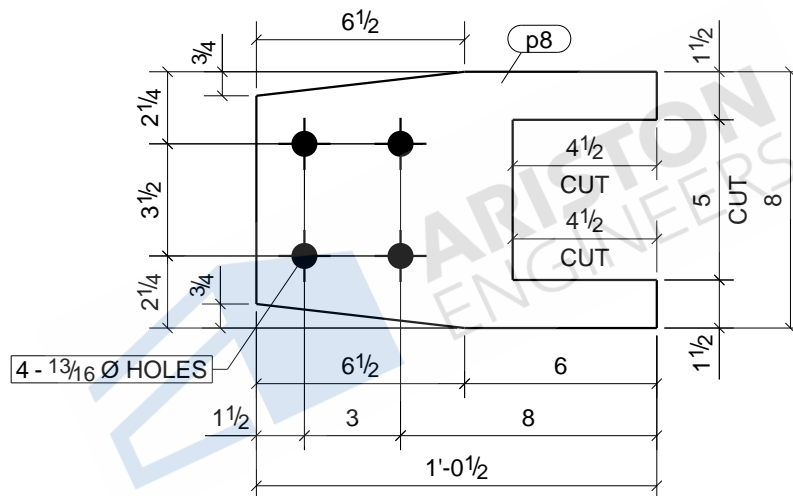


2	C2
1	C10
Qty.	In Assembly

p7	PL1/2"X8"	A36	3	1'-1 3/4"	179	11	
MARK	SIZE	GRADE	QTY.	LENGTH	AREA	WEIGHT	
MATERIAL LIST FOR WORKSHOP					TOTALS	0 in ²	0 lb/ft

DRAWING No. **p7**

JOB No.		DESCRIPTION	PLATE
DRAWN BY		REVISION No.	
DATE DRAWN		REVISION DATE	

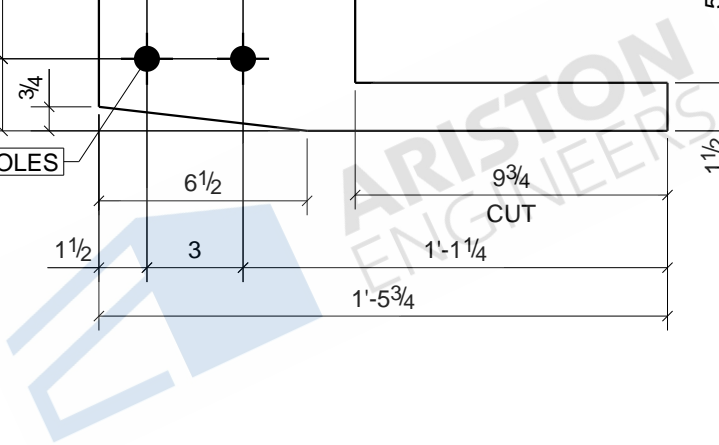
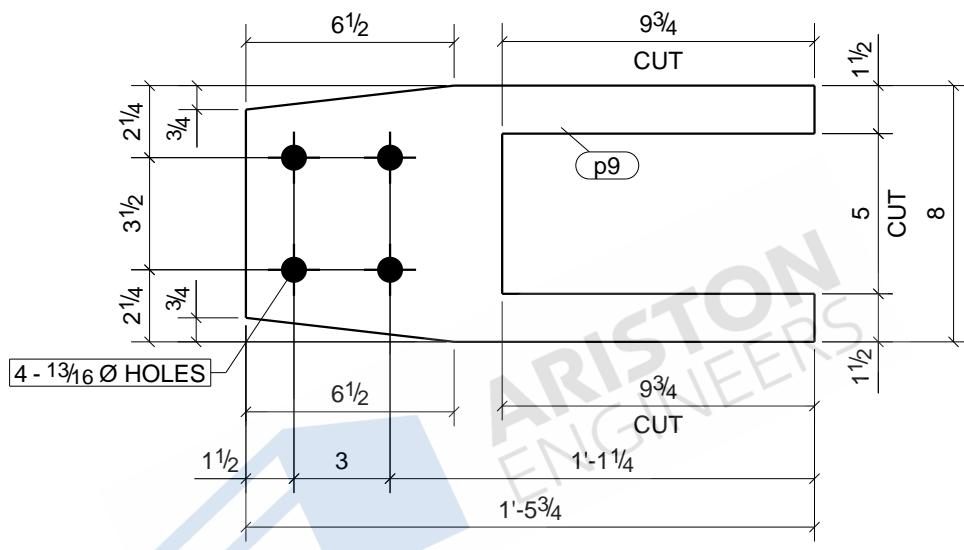


2	C4
4	C6
Qty.	In Assembly

p8	PL1/2"X8"	A36	6	1'-0 1/2"	170	10
MARK	SIZE	GRADE	QTY.	LENGTH	AREA	WEIGHT
MATERIAL LIST FOR WORKSHOP				TOTALS	0 in ²	0 lb/ft

DRAWING No. **p8**

JOB No.	DESCRIPTION	PLATE
DRAWN BY	REVISION No.	
DATE DRAWN	REVISION DATE	

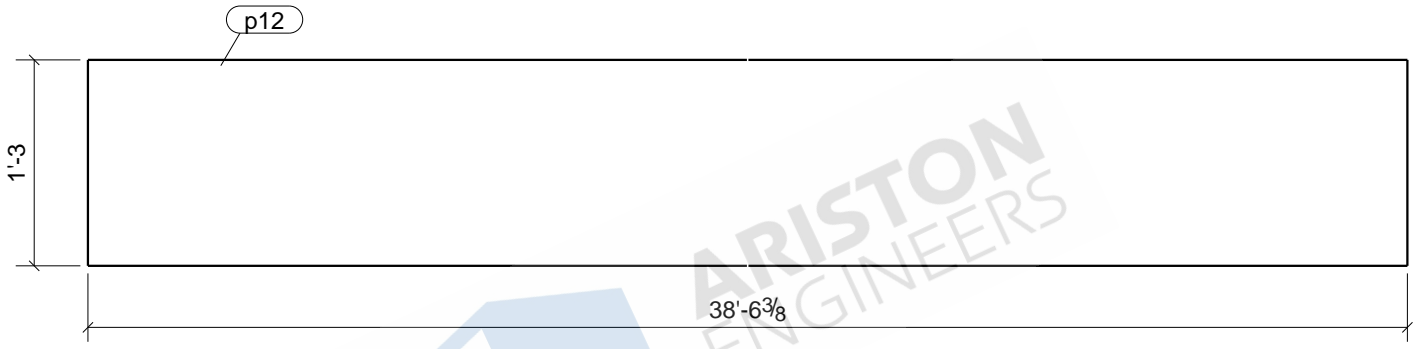


1	C9
Qty.	In Assembly
212	13
0 in ²	0 lb/ft

p9	PL1/2"X8"	A36	1	1'-5 3/4"	212	13
MARK	SIZE	GRADE	QTY.	LENGTH	AREA	WEIGHT
MATERIAL LIST FOR WORKSHOP					TOTALS	

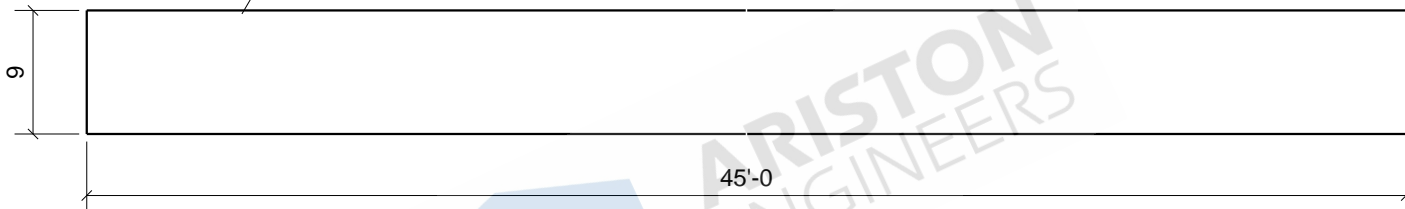
DRAWING No.		p9	
JOB No.		DESCRIPTION	PLATE
DRAWN BY		REVISION No.	
DATE DRAWN		REVISION DATE	

Tekla Structures



						2	LB1	
						Qty.	In Assembly	
p12	PL1/2"X15"	A36	2	38'-6 3/8"	14349	983		
MARK	SIZE	GRADE	QTY.	LENGTH	AREA	WEIGHT		
MATERIAL LIST FOR WORKSHOP					TOTALS	0 in ²	0 lb/ft	
Tekla Structures				DRAWING No.		p12		
				JOB No.		DESCRIPTION		PLATE
				DRAWN BY		REVISION No.		
				DATE DRAWN		REVISION DATE		

p13



1	B10
1	B36
Qty.	In Assembly

p13	PL1/2"X9"	A36	2	45'-0"	10269	689	
MARK	SIZE	GRADE	QTY.	LENGTH	AREA	WEIGHT	
MATERIAL LIST FOR WORKSHOP					TOTALS	0 in ²	0 lb/ft

Tekla Structures

DRAWING No.

p13

JOB No.

DESCRIPTION

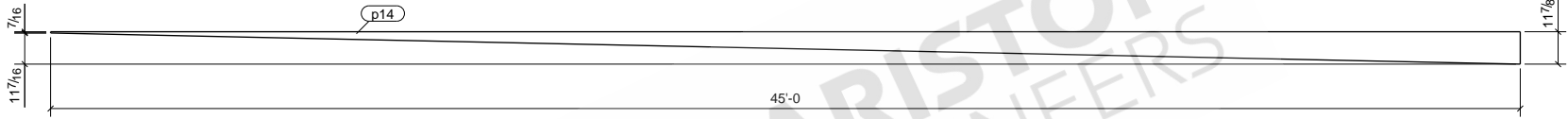
PLATE

DRAWN BY

REVISION No.

DATE DRAWN

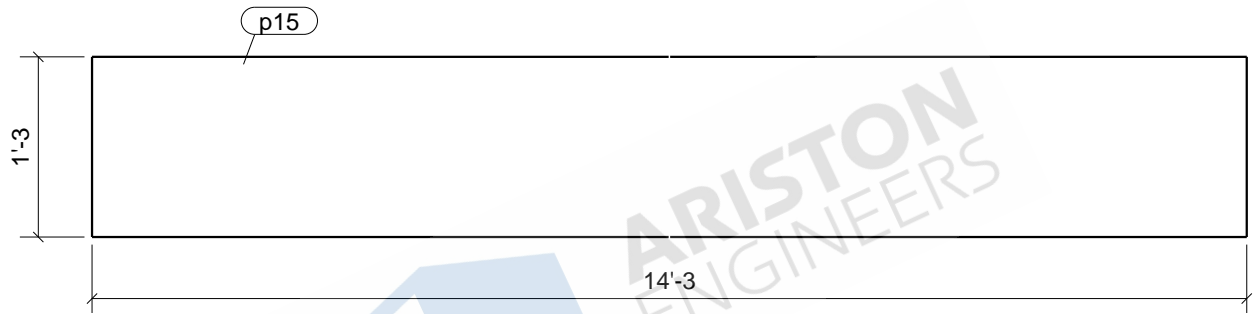
REVISION DATE



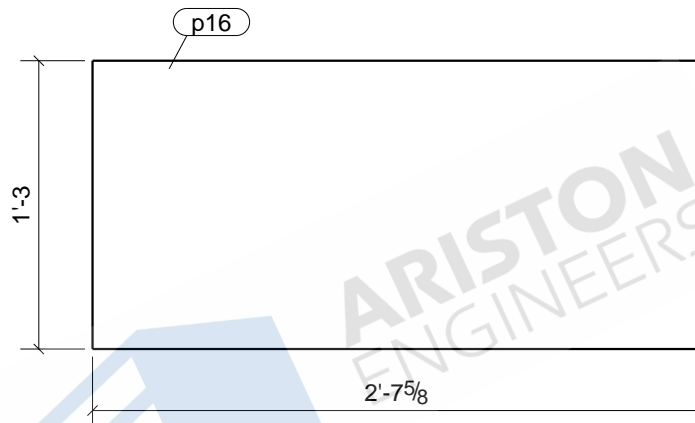
ARISTON
ENGINEERS

1	B10
1	B36
Qty.	In Assembly

p14	PL1/2"X12"	A36	2	45'-0"	7217	473	
MARK	SIZE	GRADE	QTY.	LENGTH	AREA	WEIGHT	
MATERIAL LIST FOR WORKSHOP					TOTALS	0 in ²	0 lb/ft
				DRAWING No.	p14		
				JOB No.	DESCRIPTION	PLATE	
				DRAWN BY	REVISION No.		
				DATE DRAWN	REVISION DATE		

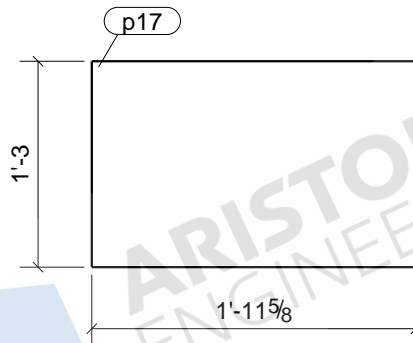


						1	LB3
						Qty.	In Assembly
p15	PL1/2"X15"	A36	1	14'-3"	5316		364
MARK	SIZE	GRADE	QTY.	LENGTH	AREA	WEIGHT	
MATERIAL LIST FOR WORKSHOP					TOTALS	0 in ²	0 lb/ft
				DRAWING No.	p15		
				JOB No.		DESCRIPTION	PLATE
				DRAWN BY		REVISION No.	
				DATE DRAWN		REVISION DATE	



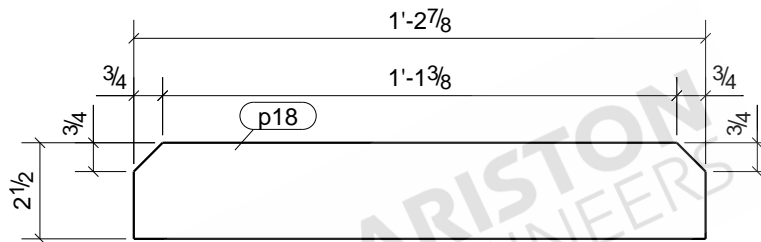
						1	LB3
						Qty.	In Assembly
p16	PL1/2"X15"	A36	1	2'-7 5/8"	995	67	
MARK	SIZE	GRADE	QTY.	LENGTH	AREA	WEIGHT	
MATERIAL LIST FOR WORKSHOP					TOTALS	0 in ²	0 lb/ft
				DRAWING No.	p16		
				JOB No.	DESCRIPTION	PLATE	
				DRAWN BY	REVISION No.		
				DATE DRAWN	REVISION DATE		

Tekla Structures



ARISTON
ENGINEERS

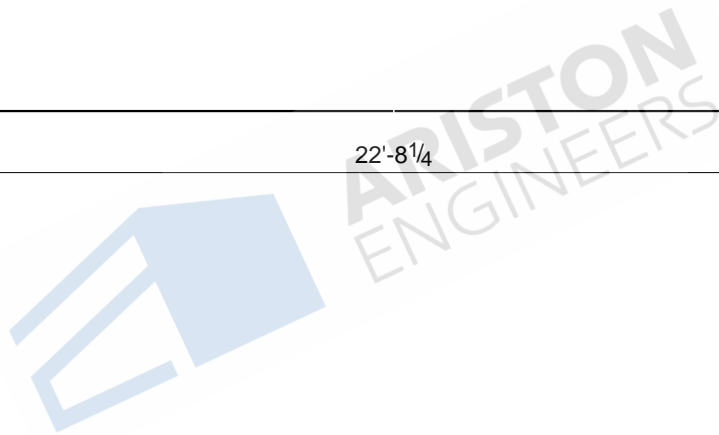
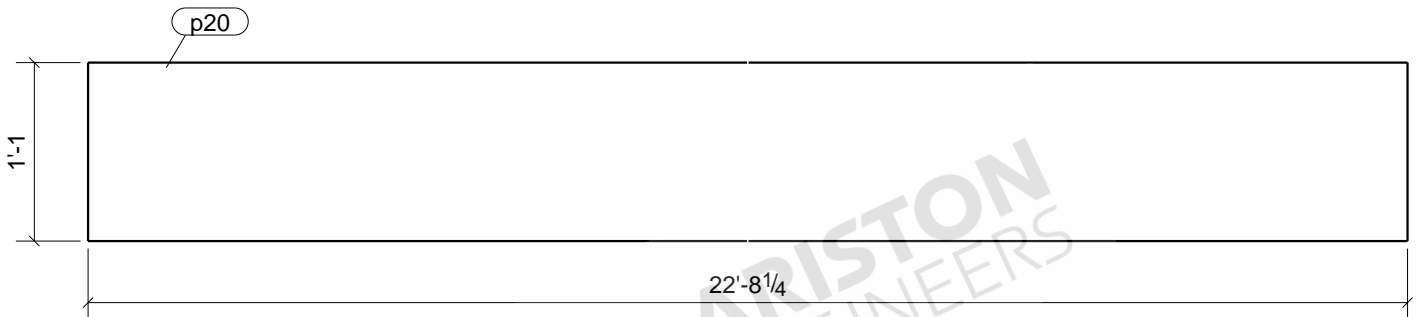
						1	LB3
						Qty.	In Assembly
p17	PL1/2"X15"	A36	1	1'-11 5/8"	747	50	
MARK	SIZE	GRADE	QTY.	LENGTH	AREA	WEIGHT	
MATERIAL LIST FOR WORKSHOP					TOTALS	0 in ²	0 lb/ft
				DRAWING No.	p17		
				JOB No.		DESCRIPTION	PLATE
				DRAWN BY		REVISION No.	
				DATE DRAWN		REVISION DATE	



2	B8
2	B37
Qty.	In Assembly

p18	PL3/8"X2 1/2"	A36	4	1'-2 7/8"	86	4
MARK	SIZE	GRADE	QTY.	LENGTH	AREA	WEIGHT
MATERIAL LIST FOR WORKSHOP				TOTALS	0 in ²	0 lb/ft

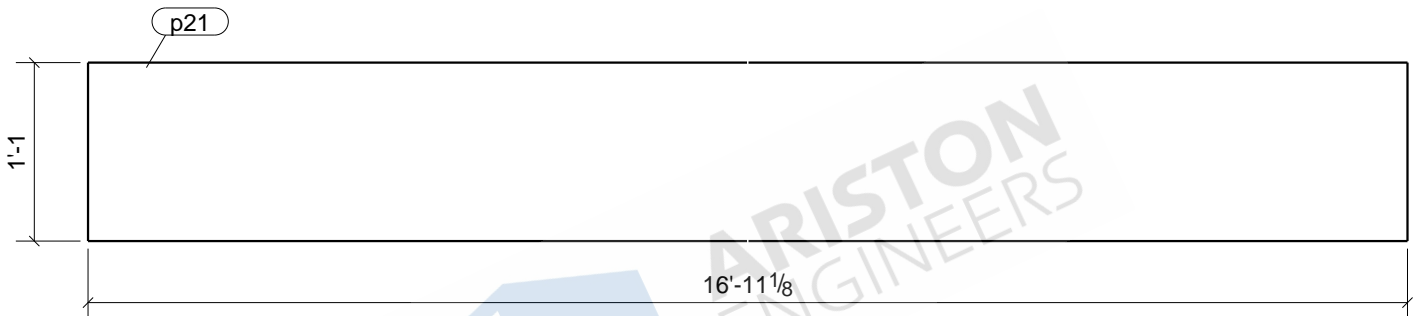
DRAWING No.	p18		
JOB No.		DESCRIPTION	PLATE
DRAWN BY		REVISION No.	
DATE DRAWN		REVISION DATE	



						1	LB4
						Qty.	In Assembly
p20	PL1/2"X13"	A36	1	22'-8 1/4"	7364		502
MARK	SIZE	GRADE	QTY.	LENGTH	AREA	WEIGHT	
MATERIAL LIST FOR WORKSHOP					TOTALS	0 in ²	0 lb/ft

Tekla Structures

DRAWING No.		p20	
JOB No.		DESCRIPTION	PLATE
DRAWN BY		REVISION No.	
DATE DRAWN		REVISION DATE	

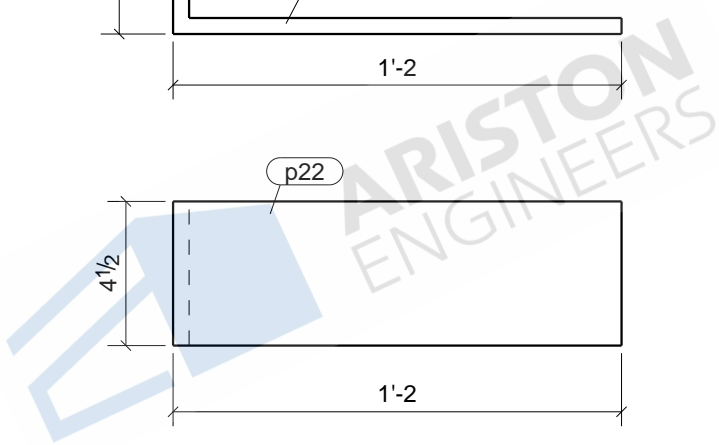
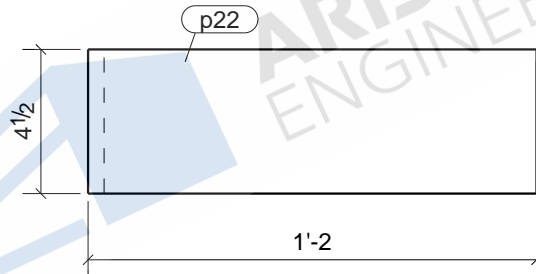
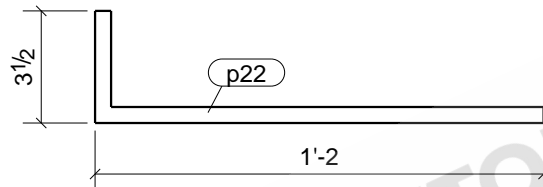


1	LB2
1	LB5
Qty.	In Assembly

p21	PL1/2"X13"	A36	2	16'-11 1/8"	5497	374
MARK	SIZE	GRADE	QTY.	LENGTH	AREA	WEIGHT
MATERIAL LIST FOR WORKSHOP				TOTALS	0 in ²	0 lb/ft

Tekla Structures

DRAWING No.		p21	
JOB No.		DESCRIPTION	PLATE
DRAWN BY		REVISION No.	
DATE DRAWN		REVISION DATE	



1	LB2
2	LB4
1	LB5
Qty.	In Assembly

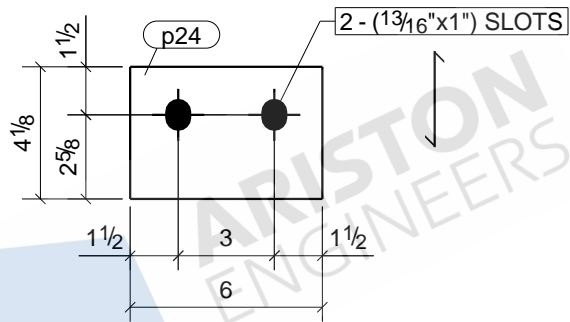
p22	PL1/2"X4 1/2"	A36	4	1'-4 1/2"	174	11
MARK	SIZE	GRADE	QTY.	LENGTH	AREA	WEIGHT
MATERIAL LIST FOR WORKSHOP				TOTALS	0 in ²	0 lb/ft

Tekla Structures

DRAWING No.

p22

JOB No.		DESCRIPTION	PLATE
DRAWN BY		REVISION No.	
DATE DRAWN		REVISION DATE	

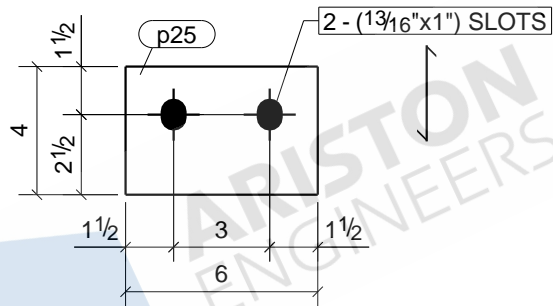


2	C2
1	C10
Qty.	In Assembly

p24	PL3/8"X4 1/8"	A36	3	0'-6"	57	3	
MARK	SIZE	GRADE	QTY.	LENGTH	AREA	WEIGHT	
MATERIAL LIST FOR WORKSHOP					TOTALS	0 in ²	0 lb/ft

DRAWING No. **p24**

JOB No.		DESCRIPTION	PLATE
DRAWN BY		REVISION No.	
DATE DRAWN		REVISION DATE	

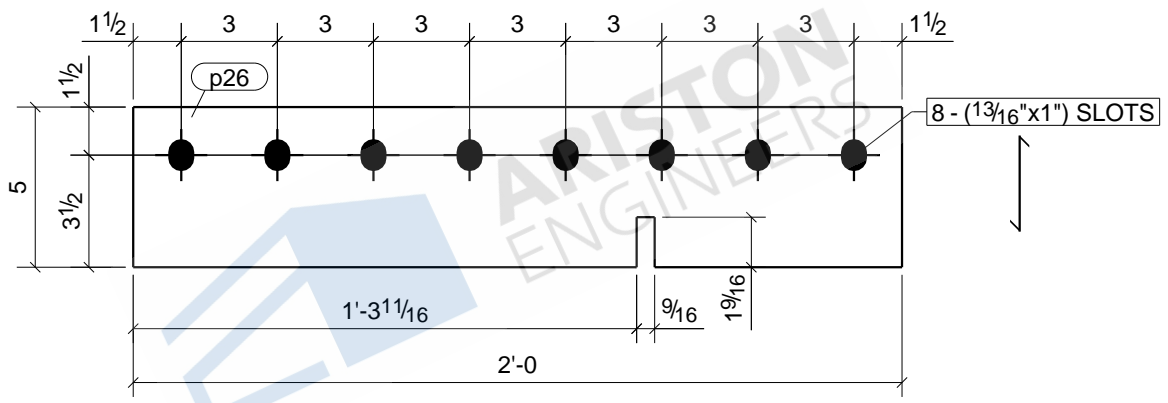


1	C4
1	C9
Qty.	In Assembly

p25	PL3/8"X4"	A36	2	0'-6"	55	3
MARK	SIZE	GRADE	QTY.	LENGTH	AREA	WEIGHT
MATERIAL LIST FOR WORKSHOP				TOTALS	0 in ²	0 lb/ft

DRAWING No. **p25**

JOB No.		DESCRIPTION	PLATE
DRAWN BY		REVISION No.	
DATE DRAWN		REVISION DATE	

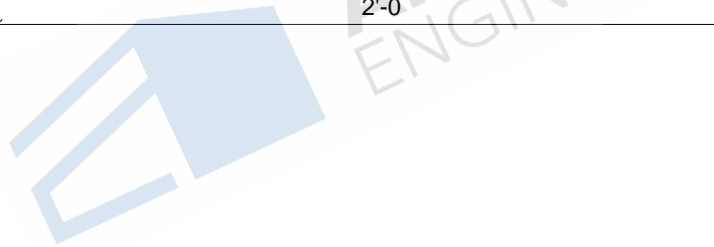
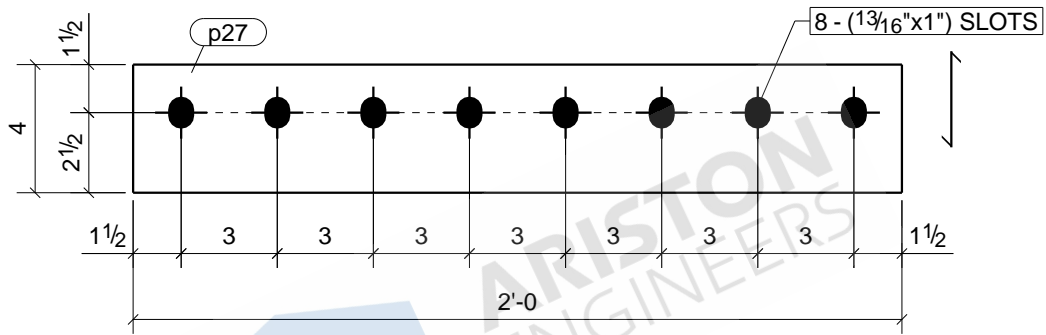


2	C6
Qty.	In Assembly

MARK	SIZE	GRADE	QTY.	LENGTH	AREA	WEIGHT	
p26	PL3/8"x5"	A36	2	2'-0"	261	13	
MATERIAL LIST FOR WORKSHOP					TOTALS	0 in ²	0 lb/ft

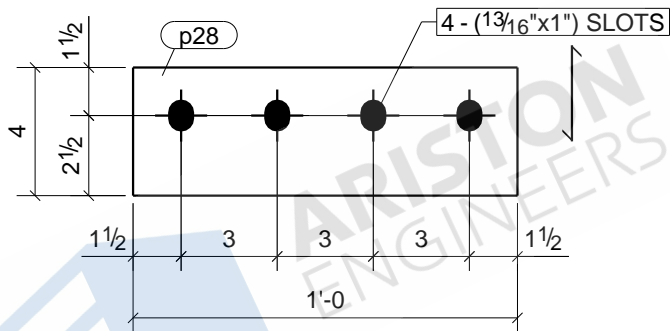
DRAWING No.		p26	
JOB No.		DESCRIPTION	PLATE
DRAWN BY		REVISION No.	
DATE DRAWN		REVISION DATE	

Tekla Structures



						2	C7
						Qty.	In Assembly
MARK	SIZE	GRADE	QTY.	LENGTH	AREA	WEIGHT	
p27	PL3/8"x4"	A36	2	2'-0"	213	10	
MATERIAL LIST FOR WORKSHOP					TOTALS	0 in ²	0 lb/ft

Tekla Structures	DRAWING No.		p27		
	JOB No.		DESCRIPTION	PLATE	
	DRAWN BY		REVISION No.		
	DATE DRAWN		REVISION DATE		

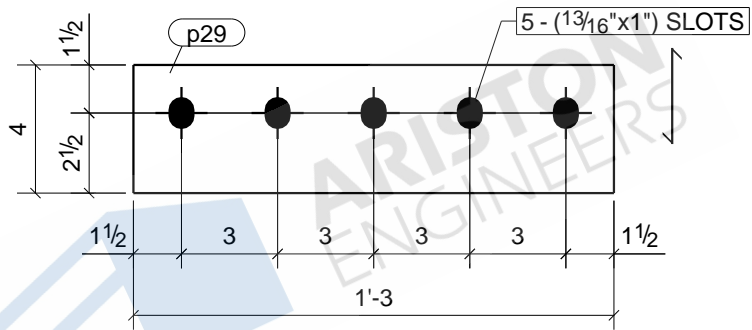


4	C2
2	C4
4	C6
2	C9
2	C10
Qty.	In Assembly

p28	PL3/8"x4"	A36	14	1'-0"	108	5
MARK	SIZE	GRADE	QTY.	LENGTH	AREA	WEIGHT
MATERIAL LIST FOR WORKSHOP				TOTALS	0 in ²	0 lb/ft

Tekla Structures

DRAWING No.		p28	
JOB No.		DESCRIPTION	PLATE
DRAWN BY		REVISION No.	
DATE DRAWN		REVISION DATE	

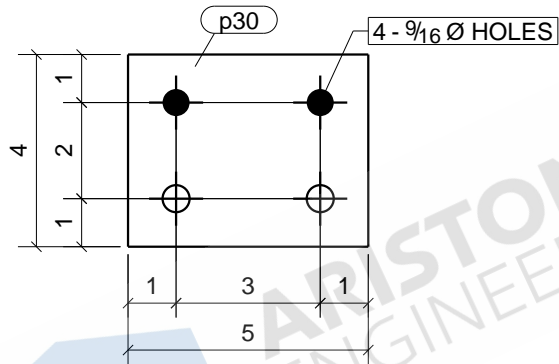


2	C1
2	C3
Qty.	In Assembly

p29	PL3/8"x4"	A36	4	1'-3"	134	6	
MARK	SIZE	GRADE	QTY.	LENGTH	AREA	WEIGHT	
MATERIAL LIST FOR WORKSHOP					TOTALS	0 in ²	0 lb/ft

DRAWING No. **p29**

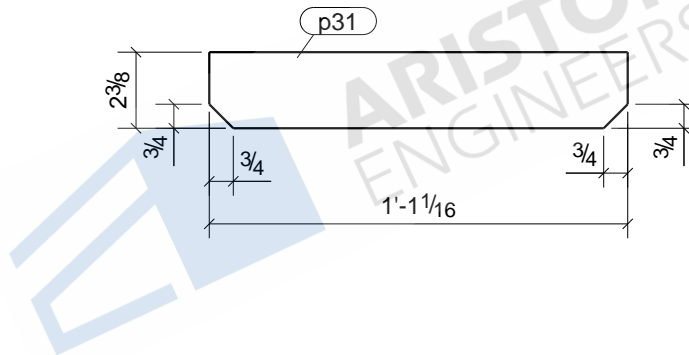
JOB No.		DESCRIPTION	PLATE
DRAWN BY		REVISION No.	
DATE DRAWN		REVISION DATE	



1	B13
1	B14
1	B15
2	B16
1	B18
5	B19
5	B20
2	B21
Qty.	In Assembly

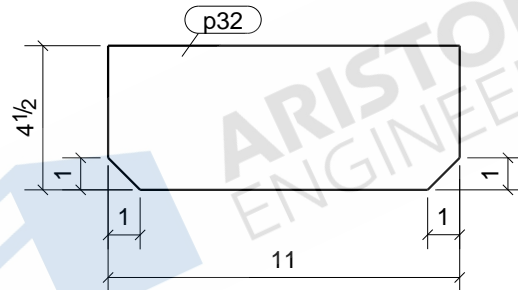
p30	PL3/8"X4"	A36	18	0'-5"	47	2	
MARK	SIZE	GRADE	QTY.	LENGTH	AREA	WEIGHT	
MATERIAL LIST FOR WORKSHOP					TOTALS	0 in ²	0 lb/ft

Tekla Structures	DRAWING No.		p30			
	JOB No.		DESCRIPTION	PLATE		
	DRAWN BY		REVISION No.			
	DATE DRAWN		REVISION DATE			



						8	B11
						Qty.	In Assembly
p31	PL3/8"X2 3/8"	A36	8	1'-1 1/16"	72	3	
MARK	SIZE	GRADE	QTY.	LENGTH	AREA	WEIGHT	
MATERIAL LIST FOR WORKSHOP					TOTALS	0 in ²	0 lb/ft
				DRAWING No.	p31		
				JOB No.	DESCRIPTION	PLATE	
				DRAWN BY	REVISION No.		
				DATE DRAWN	REVISION DATE		

Tekla Structures



1	B10
1	B36
Qty.	In Assembly

p32	PL3/8"X4 1/2"	A36	2	0'-11"	108	5	
MARK	SIZE	GRADE	QTY.	LENGTH	AREA	WEIGHT	
MATERIAL LIST FOR WORKSHOP					TOTALS	0 in ²	0 lb/ft

Tekla Structures

DRAWING No.

p32

JOB No.

DESCRIPTION

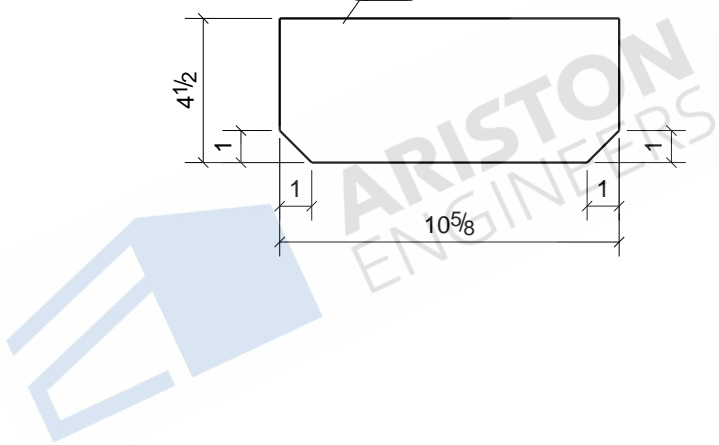
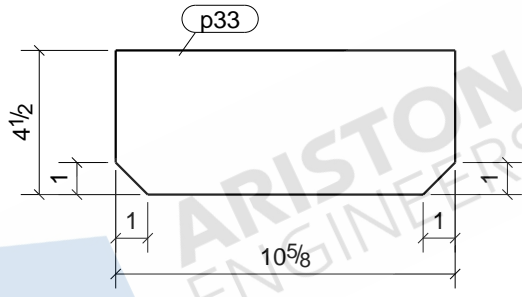
PLATE

DRAWN BY

REVISION No.

DATE DRAWN

REVISION DATE

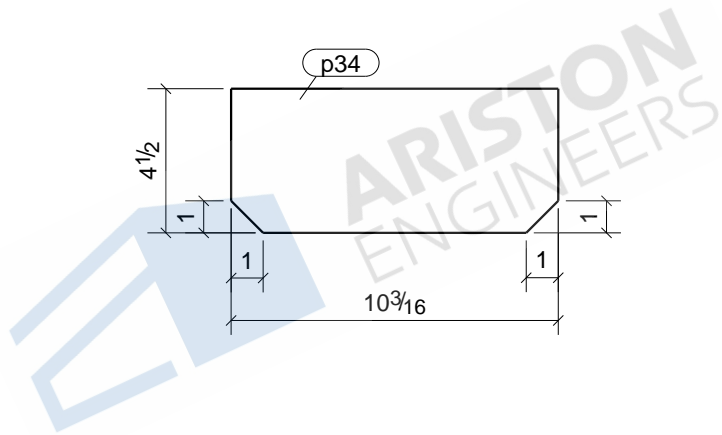


1	B10
1	B36
Qty.	In Assembly

p33	PL3/8"X4 1/2"	A36	2	0'-10 5/8"	104	5
MARK	SIZE	GRADE	QTY.	LENGTH	AREA	WEIGHT
MATERIAL LIST FOR WORKSHOP				TOTALS	0 in ²	0 lb/ft

Tekla Structures

DRAWING No.		p33	
JOB No.		DESCRIPTION	PLATE
DRAWN BY		REVISION No.	
DATE DRAWN		REVISION DATE	

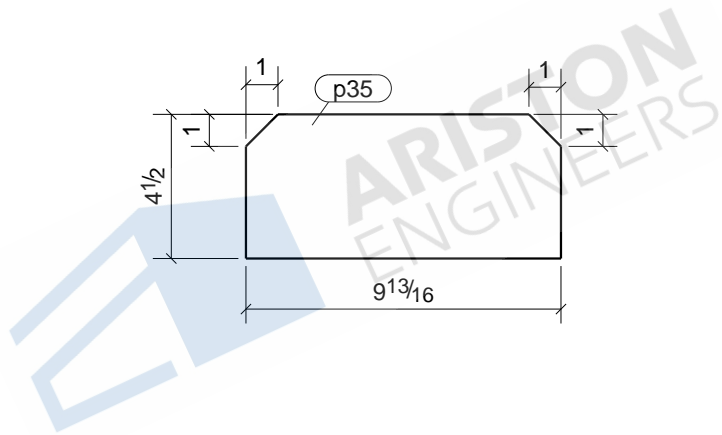


1	B10
1	B36
Qty.	In Assembly

p34	PL3/8"X4 1/2"	A36	2	0'-10 3/16"	101	5
MARK	SIZE	GRADE	QTY.	LENGTH	AREA	WEIGHT
MATERIAL LIST FOR WORKSHOP				TOTALS	0 in ²	0 lb/ft

Tekla Structures

DRAWING No.		p34	
JOB No.		DESCRIPTION	PLATE
DRAWN BY		REVISION No.	
DATE DRAWN		REVISION DATE	

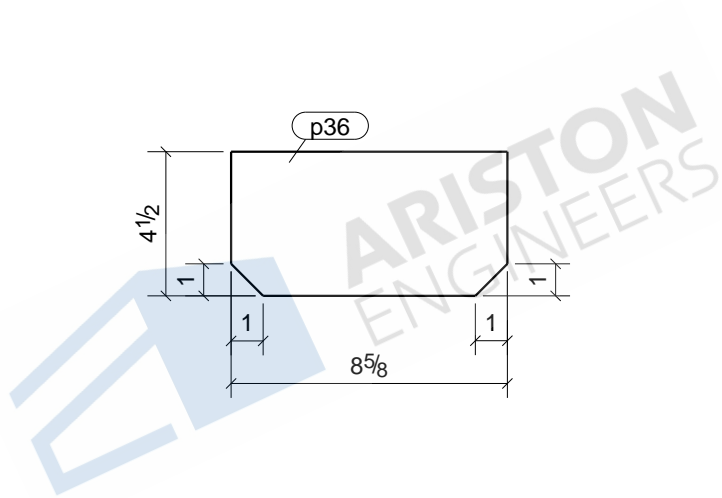
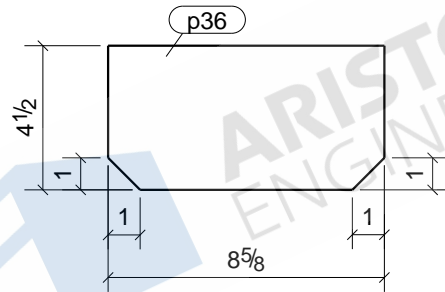


1	B10
1	B36
Qty.	In Assembly

p35	PL3/8"X4 1/2"	A36	2	0'-9 13/16"	97	5
MARK	SIZE	GRADE	QTY.	LENGTH	AREA	WEIGHT
MATERIAL LIST FOR WORKSHOP				TOTALS	0 in ²	0 lb/ft

Tekla Structures

DRAWING No.		p35	
JOB No.		DESCRIPTION	PLATE
DRAWN BY		REVISION No.	
DATE DRAWN		REVISION DATE	



1	B10
1	B36
Qty.	In Assembly

p36	PL3/8"X4 1/2"	A36	2	0'-8 5/8"	85	4
MARK	SIZE	GRADE	QTY.	LENGTH	AREA	WEIGHT
MATERIAL LIST FOR WORKSHOP				TOTALS	0 in ²	0 lb/ft

Tekla Structures

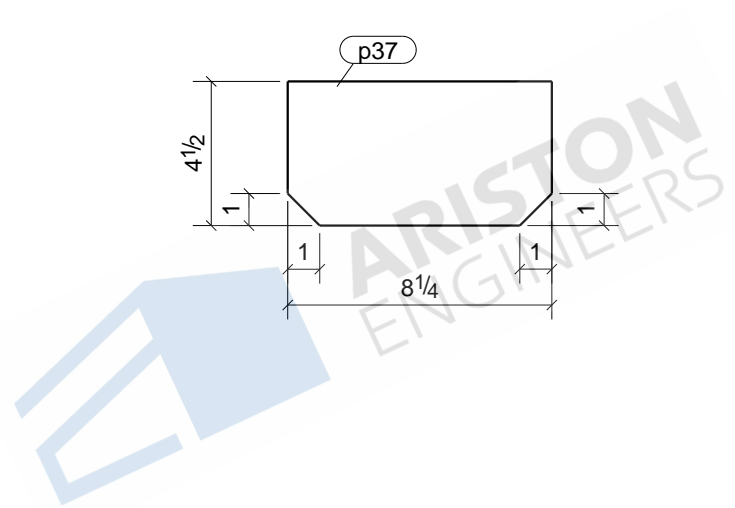
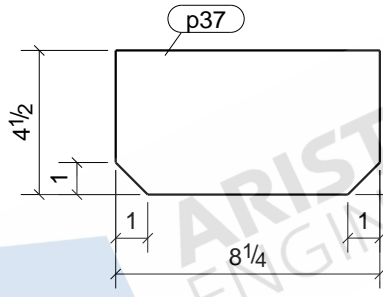
DRAWING No.

p36

JOB No.
DRAWN BY
DATE DRAWN

DESCRIPTION
REVISION No.
REVISION DATE

PLATE

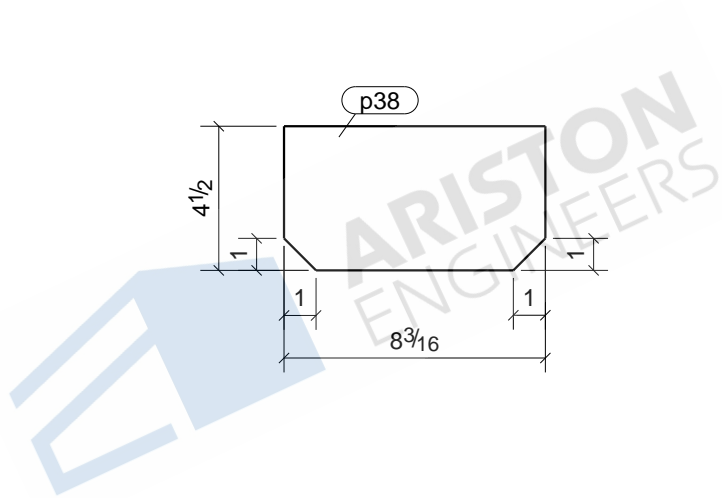
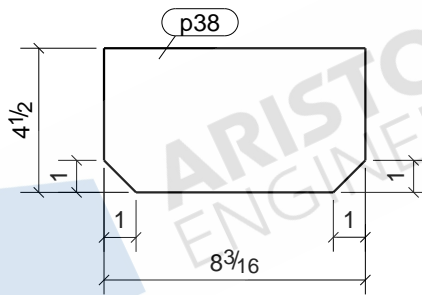


1	B10
1	B36
Qty.	In Assembly

p37	PL3/8"X4 1/2"	A36	2	0'-8 1/4"	81	4
MARK	SIZE	GRADE	QTY.	LENGTH	AREA	WEIGHT
MATERIAL LIST FOR WORKSHOP				TOTALS	0 in ²	0 lb/ft

Tekla Structures

DRAWING No.		p37	
JOB No.		DESCRIPTION	PLATE
DRAWN BY		REVISION No.	
DATE DRAWN		REVISION DATE	

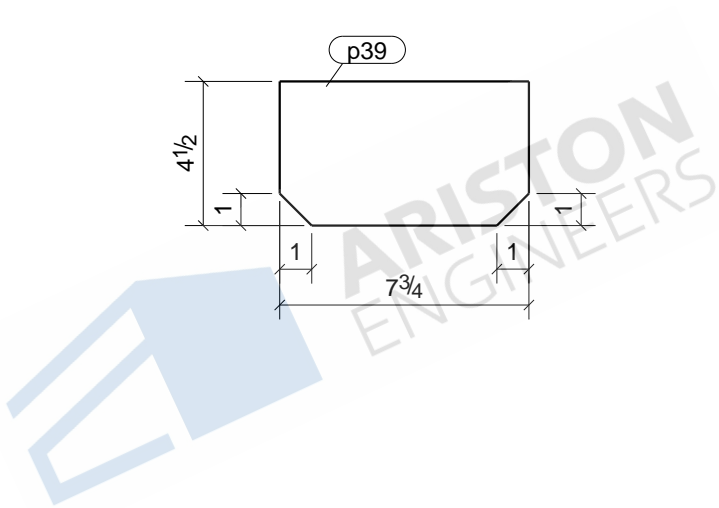
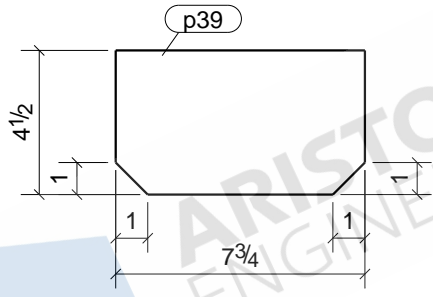


1	B10
1	B36
Qty.	In Assembly

p38	PL3/8"X4 1/2"	A36	2	0'-8 3/16"	80	4
MARK	SIZE	GRADE	QTY.	LENGTH	AREA	WEIGHT
MATERIAL LIST FOR WORKSHOP				TOTALS	0 in ²	0 lb/ft

Tekla Structures

DRAWING No.		p38	
JOB No.		DESCRIPTION	PLATE
DRAWN BY		REVISION No.	
DATE DRAWN		REVISION DATE	

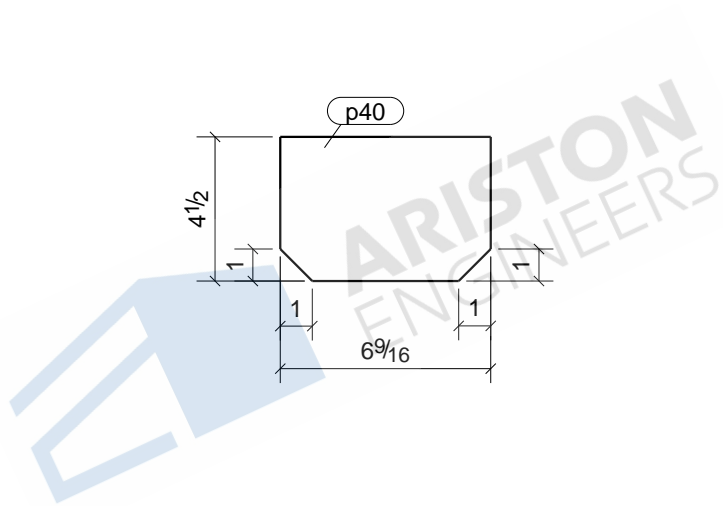


1	B10
1	B36
Qty.	In Assembly

p39	PL3/8"X4 1/2"	A36	2	0'-7 3/4"	77	4
MARK	SIZE	GRADE	QTY.	LENGTH	AREA	WEIGHT
MATERIAL LIST FOR WORKSHOP				TOTALS	0 in ²	0 lb/ft

Tekla Structures

DRAWING No.		p39	
JOB No.		DESCRIPTION	PLATE
DRAWN BY		REVISION No.	
DATE DRAWN		REVISION DATE	

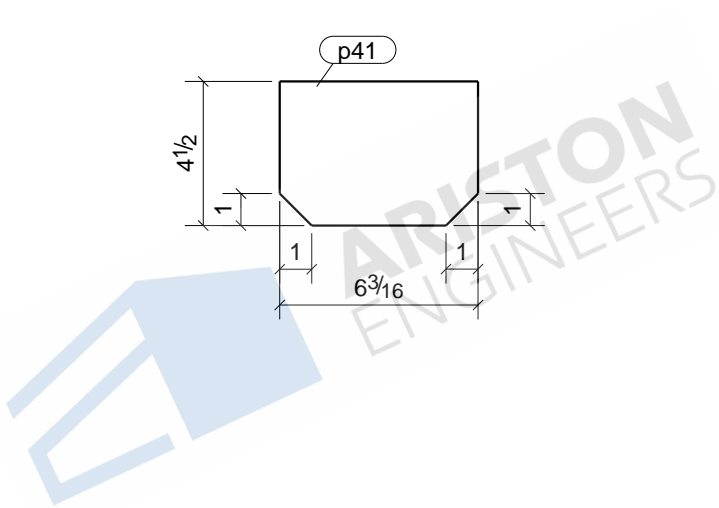
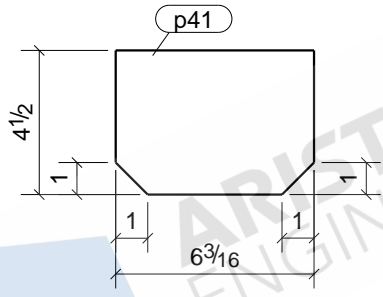


1	B10
1	B36
Qty.	In Assembly

p40	PL3/8"X4 1/2"	A36	2	0'-6 9/16"	65	3
MARK	SIZE	GRADE	QTY.	LENGTH	AREA	WEIGHT
MATERIAL LIST FOR WORKSHOP				TOTALS	0 in ²	0 lb/ft

Tekla Structures

DRAWING No.		p40	
JOB No.		DESCRIPTION	PLATE
DRAWN BY		REVISION No.	
DATE DRAWN		REVISION DATE	

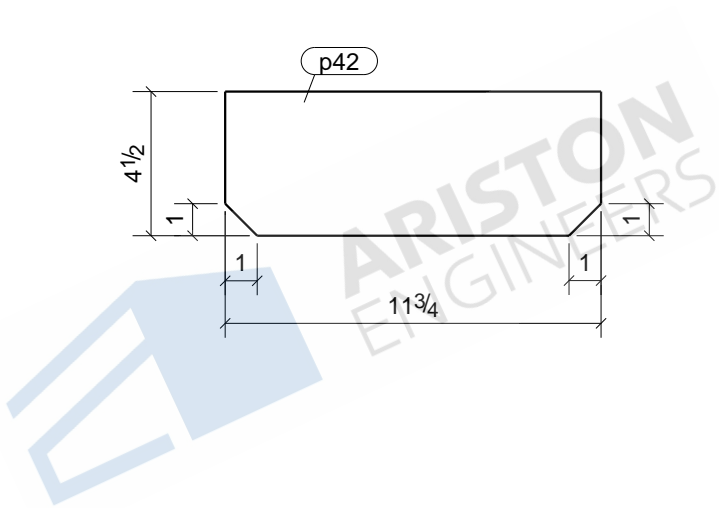
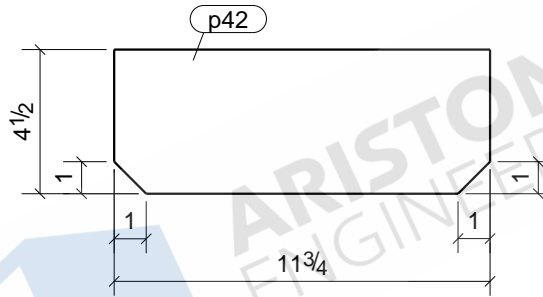


1	B10
1	B36
Qty.	In Assembly

p41	PL3/8"X4 1/2"	A36	2	0'-6 3/16"	61	3	
MARK	SIZE	GRADE	QTY.	LENGTH	AREA	WEIGHT	
MATERIAL LIST FOR WORKSHOP					TOTALS	0 in ²	0 lb/ft

Tekla Structures

DRAWING No.		p41	
JOB No.		DESCRIPTION	PLATE
DRAWN BY		REVISION No.	
DATE DRAWN		REVISION DATE	

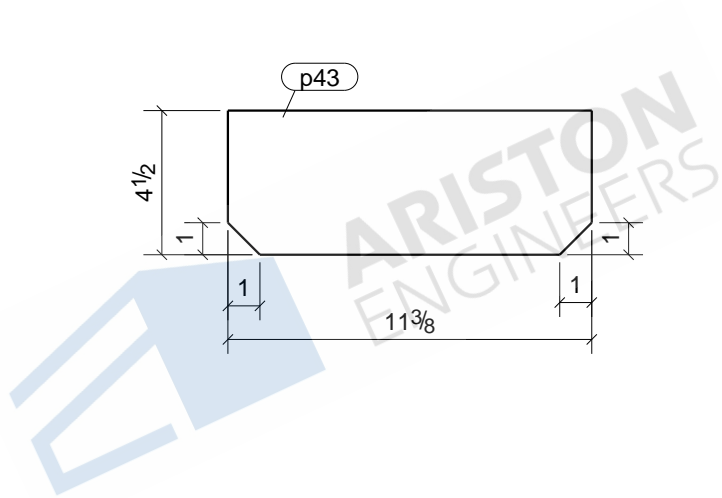
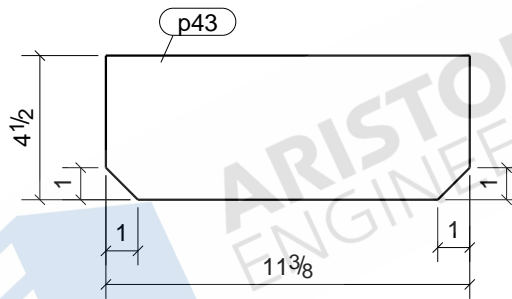


1	B10
1	B36
Qty.	In Assembly

p42	PL3/8"X4 1/2"	A36	2	0'-11 3/4"	115	6
MARK	SIZE	GRADE	QTY.	LENGTH	AREA	WEIGHT
MATERIAL LIST FOR WORKSHOP				TOTALS	0 in ²	0 lb/ft

Tekla Structures

DRAWING No.		p42	
JOB No.		DESCRIPTION	PLATE
DRAWN BY		REVISION No.	
DATE DRAWN		REVISION DATE	



1	B10
1	B36
Qty.	In Assembly

p43	PL3/8"X4 1/2"	A36	2	0'-11 3/8"	112	5
MARK	SIZE	GRADE	QTY.	LENGTH	AREA	WEIGHT
MATERIAL LIST FOR WORKSHOP				TOTALS	0 in ²	0 lb/ft

Tekla Structures

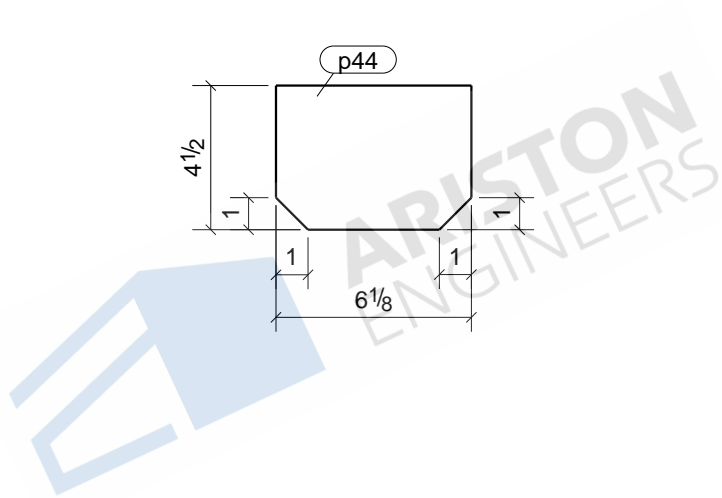
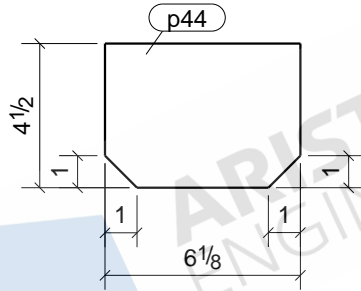
DRAWING No.

p43

JOB No.
DRAWN BY
DATE DRAWN

DESCRIPTION
REVISION No.
REVISION DATE

PLATE



1	B10
1	B36
Qty.	In Assembly

p44	PL3/8"X4 1/2"	A36	2	0'-6 1/8"	60	3
MARK	SIZE	GRADE	QTY.	LENGTH	AREA	WEIGHT
MATERIAL LIST FOR WORKSHOP				TOTALS	0 in ²	0 lb/ft

Tekla Structures

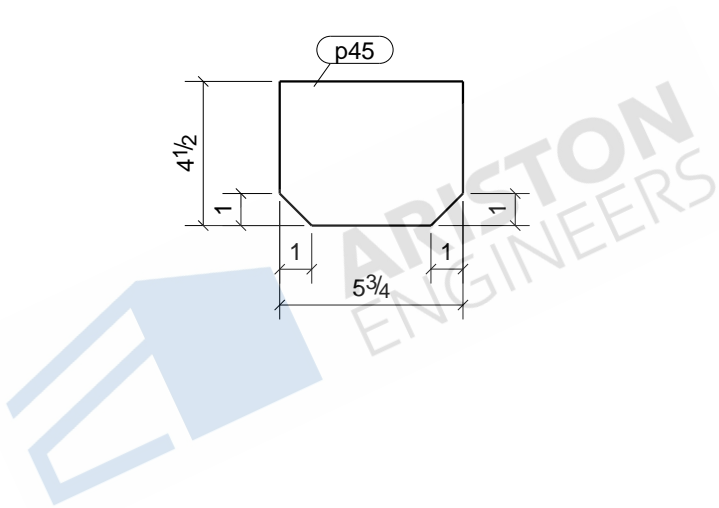
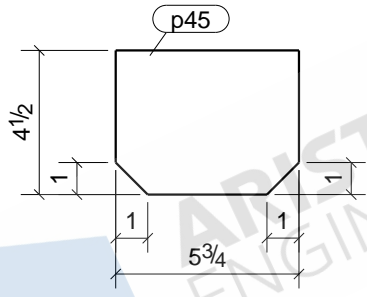
DRAWING No.

p44

JOB No.
DRAWN BY
DATE DRAWN

DESCRIPTION
REVISION No.
REVISION DATE

PLATE

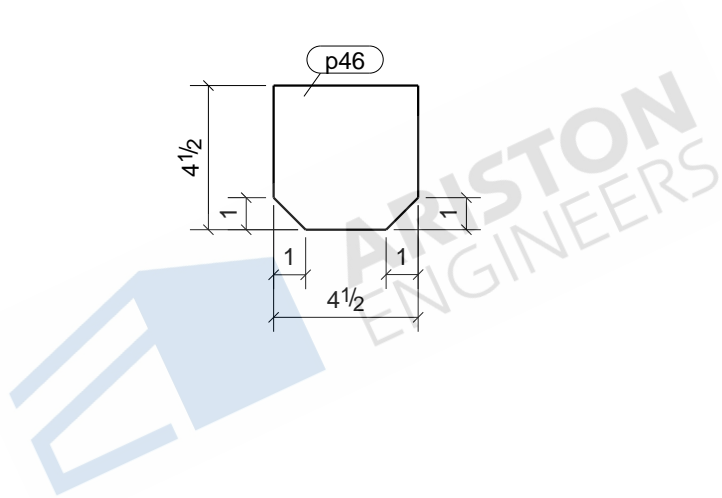
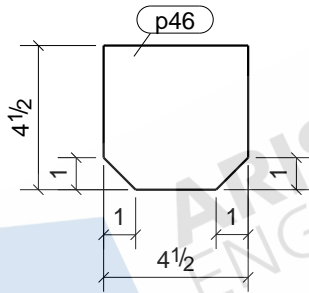


1	B10
1	B36
Qty.	In Assembly

p45	PL3/8"X4 1/2"	A36	2	0'-5 3/4"	57	3
MARK	SIZE	GRADE	QTY.	LENGTH	AREA	WEIGHT
MATERIAL LIST FOR WORKSHOP				TOTALS	0 in ²	0 lb/ft

Tekla Structures

DRAWING No.		p45	
JOB No.		DESCRIPTION	PLATE
DRAWN BY		REVISION No.	
DATE DRAWN		REVISION DATE	



1	B10
1	B36
Qty.	In Assembly

p46	PL3/8"X4 1/2"	A36	2	0'-4 1/2"	45	2
MARK	SIZE	GRADE	QTY.	LENGTH	AREA	WEIGHT
MATERIAL LIST FOR WORKSHOP				TOTALS	0 in ²	0 lb/ft

Tekla Structures

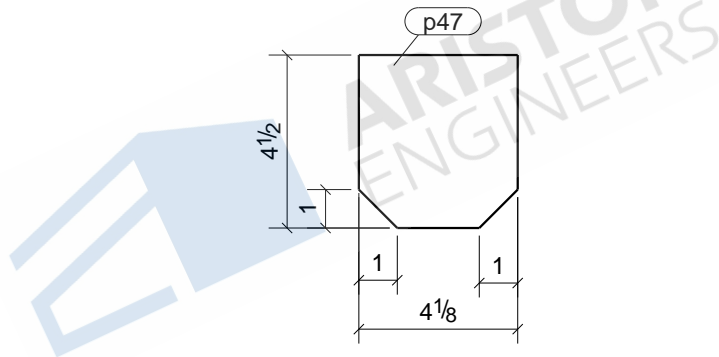
DRAWING No.

p46

JOB No.
DRAWN BY
DATE DRAWN

DESCRIPTION
REVISION No.
REVISION DATE

PLATE



1	B10
1	B36
Qty.	In Assembly

p47	PL3/8"X4 1/8"	A36	2	0'-4 1/2"	41	2	
MARK	SIZE	GRADE	QTY.	LENGTH	AREA	WEIGHT	
MATERIAL LIST FOR WORKSHOP					TOTALS	0 in ²	0 lb/ft

Tekla Structures

DRAWING No.

p47

JOB No.

DESCRIPTION

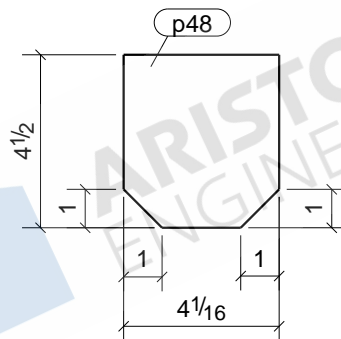
PLATE

DRAWN BY

REVISION No.

DATE DRAWN

REVISION DATE

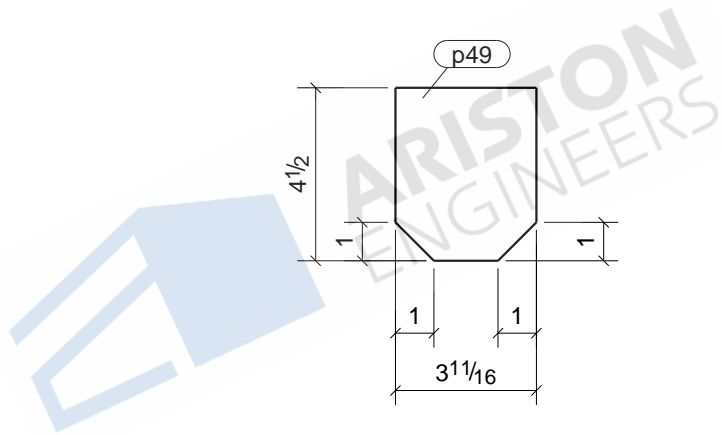


1	B10
1	B36
Qty.	In Assembly

p48	PL3/8"X4 1/16"	A36	2	0'-4 1/2"	40	2
MARK	SIZE	GRADE	QTY.	LENGTH	AREA	WEIGHT
MATERIAL LIST FOR WORKSHOP				TOTALS	0 in ²	0 lb/ft

DRAWING No. **p48**

JOB No.		DESCRIPTION	PLATE
DRAWN BY		REVISION No.	
DATE DRAWN		REVISION DATE	

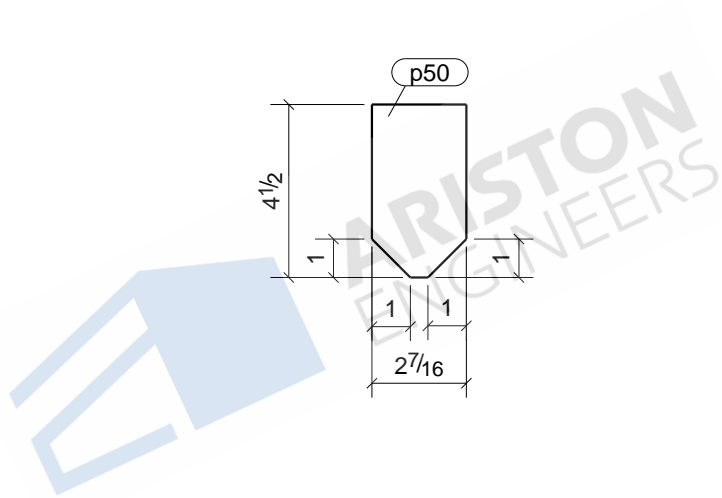
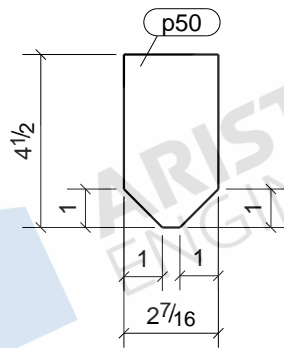


1	B10
1	B36
Qty.	In Assembly

p49	PL3/8"X3 11/16"	A36	2	0'-4 1/2"	37	2	
MARK	SIZE	GRADE	QTY.	LENGTH	AREA	WEIGHT	
MATERIAL LIST FOR WORKSHOP					TOTALS	0 in ²	0 lb/ft

Tekla Structures

DRAWING No.		p49	
JOB No.		DESCRIPTION	PLATE
DRAWN BY		REVISION No.	
DATE DRAWN		REVISION DATE	

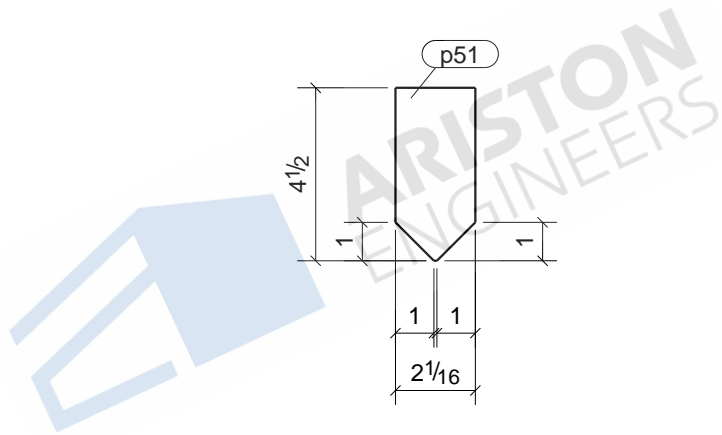


1	B10
1	B36
Qty.	In Assembly

p50	PL3/8"X2 7/16"	A36	2	0'-4 1/2"	25	1	
MARK	SIZE	GRADE	QTY.	LENGTH	AREA	WEIGHT	
MATERIAL LIST FOR WORKSHOP					TOTALS	0 in ²	0 lb/ft

Tekla Structures

DRAWING No.		p50	
JOB No.		DESCRIPTION	PLATE
DRAWN BY		REVISION No.	
DATE DRAWN		REVISION DATE	

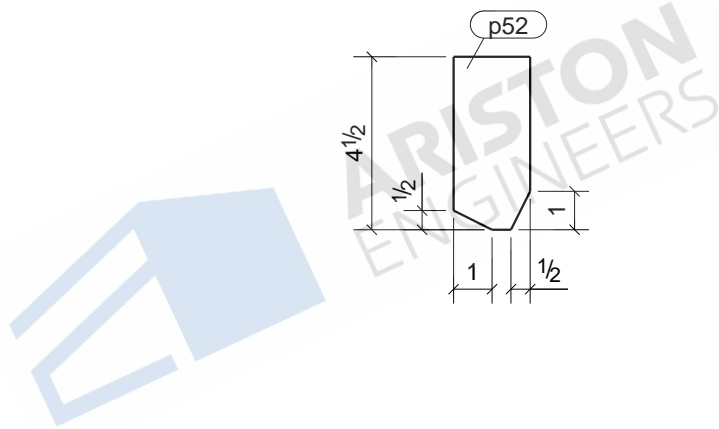


1	B10
1	B36
Qty.	In Assembly

p51	PL3/8"X2 1/16"	A36	2	0'-4 1/2"	21	1	
MARK	SIZE	GRADE	QTY.	LENGTH	AREA	WEIGHT	
MATERIAL LIST FOR WORKSHOP					TOTALS	0 in ²	0 lb/ft

Tekla Structures

DRAWING No.		p51	
JOB No.		DESCRIPTION	PLATE
DRAWN BY		REVISION No.	
DATE DRAWN		REVISION DATE	

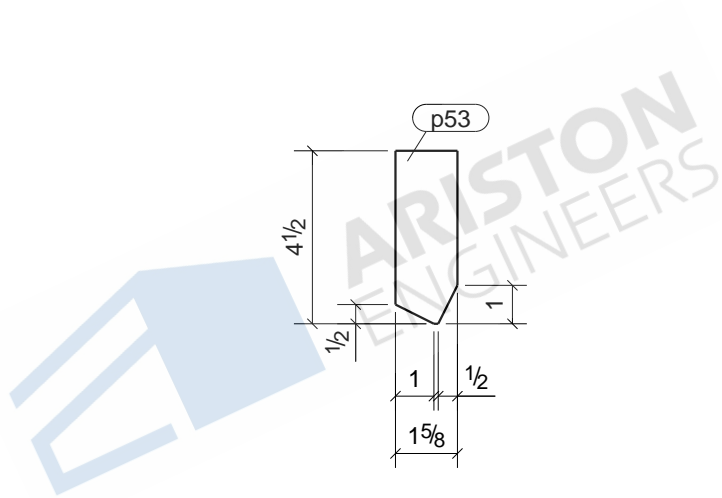


1	B10
1	B36
Qty.	In Assembly

p52	PL3/8"X2"	A36	2	0'-4 1/2"	22	1
MARK	SIZE	GRADE	QTY.	LENGTH	AREA	WEIGHT
MATERIAL LIST FOR WORKSHOP				TOTALS	0 in ²	0 lb/ft

Tekla Structures

DRAWING No.		p52	
JOB No.		DESCRIPTION	PLATE
DRAWN BY		REVISION No.	
DATE DRAWN		REVISION DATE	

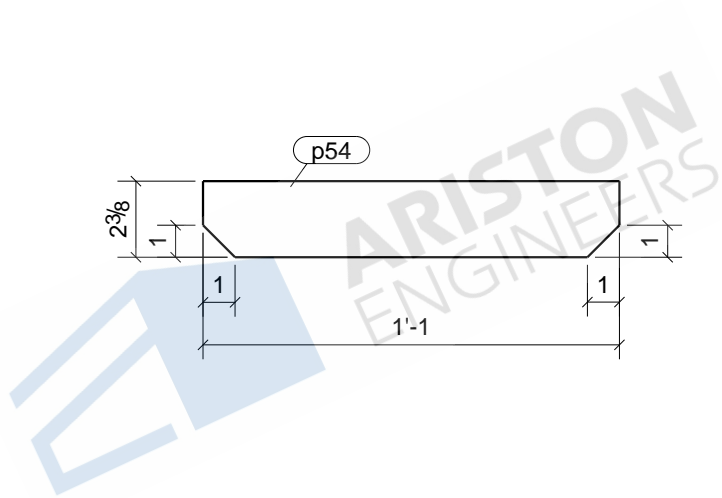
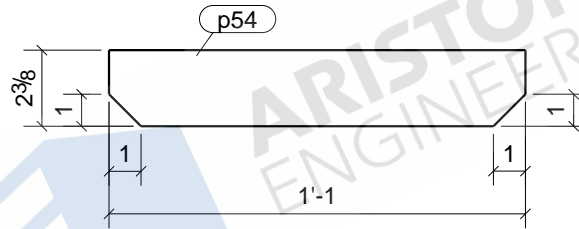


1	B10
1	B36
Qty.	In Assembly

p53	PL3/8"X1 5/8"	A36	2	0'-4 1/2"	18	1	
MARK	SIZE	GRADE	QTY.	LENGTH	AREA	WEIGHT	
MATERIAL LIST FOR WORKSHOP					TOTALS	0 in ²	0 lb/ft

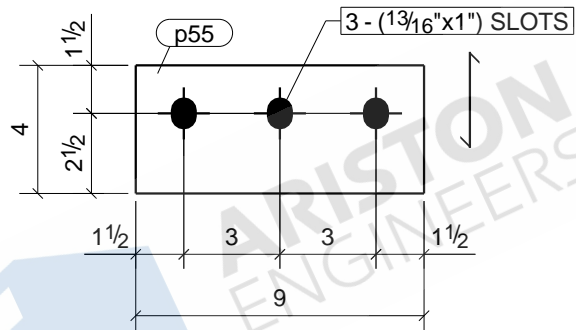
Tekla Structures

DRAWING No.		p53	
JOB No.		DESCRIPTION	PLATE
DRAWN BY		REVISION No.	
DATE DRAWN		REVISION DATE	



						12	B9
						Qty.	In Assembly
p54	PL3/8"X2 3/8"	A36	12	1'-1"	71	3	
MARK	SIZE	GRADE	QTY.	LENGTH	AREA	WEIGHT	
MATERIAL LIST FOR WORKSHOP					TOTALS	0 in ²	0 lb/ft
				DRAWING No.	p54		
				JOB No.	DESCRIPTION	PLATE	
				DRAWN BY	REVISION No.		
				DATE DRAWN	REVISION DATE		

Tekla Structures

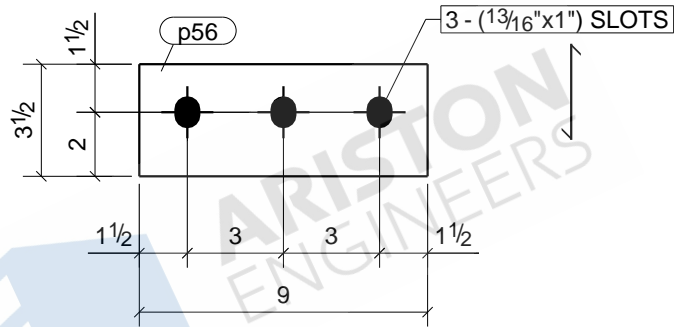


2	C1
2	C3
1	C5
1	C8
Qty.	In Assembly

p55	PL3/8"X4"	A36	6	0'-9"	82	4
MARK	SIZE	GRADE	QTY.	LENGTH	AREA	WEIGHT
MATERIAL LIST FOR WORKSHOP				TOTALS	0 in ²	0 lb/ft

DRAWING No. **p55**

JOB No.		DESCRIPTION	PLATE
DRAWN BY		REVISION No.	
DATE DRAWN		REVISION DATE	

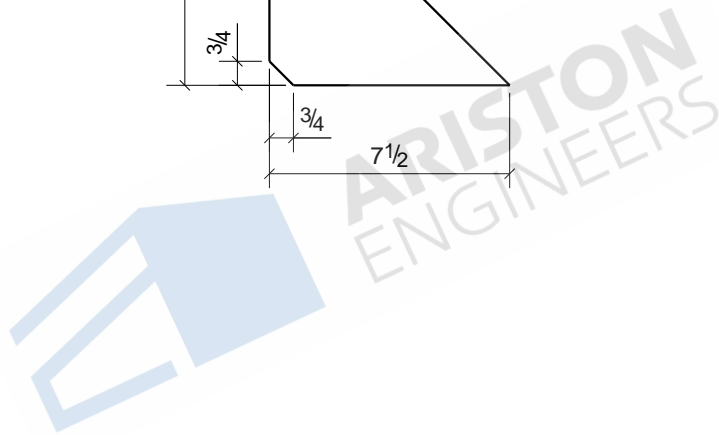
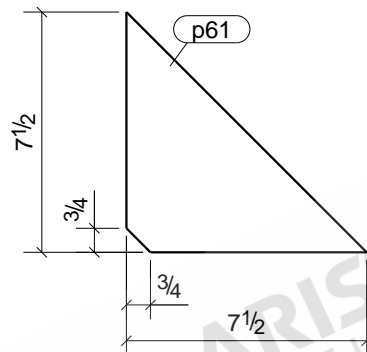


1	C5
2	C7
1	C8
Qty.	In Assembly

p56	PL3/8"X3 1/2"	A36	4	0'-9"	72	3	
MARK	SIZE	GRADE	QTY.	LENGTH	AREA	WEIGHT	
MATERIAL LIST FOR WORKSHOP					TOTALS	0 in ²	0 lb/ft

DRAWING No. **p56**

JOB No.		DESCRIPTION	PLATE
DRAWN BY		REVISION No.	
DATE DRAWN		REVISION DATE	

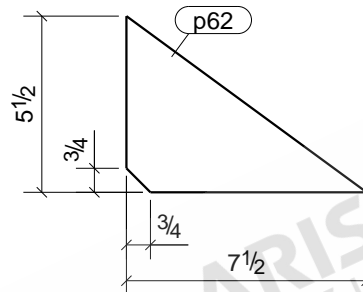


2	C1
2	C3
1	C4
1	C9
Qty.	In Assembly

p61	PL3/8"X7 1/2"	A36	6	0'-7 1/2"	65	3
MARK	SIZE	GRADE	QTY.	LENGTH	AREA	WEIGHT
MATERIAL LIST FOR WORKSHOP				TOTALS	0 in ²	0 lb/ft

Tekla Structures

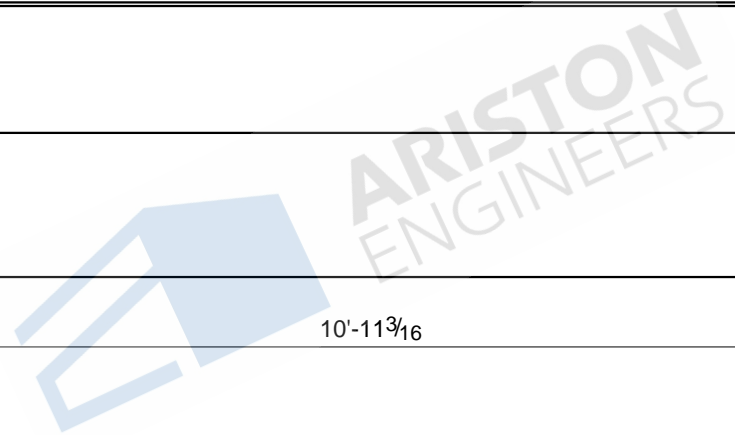
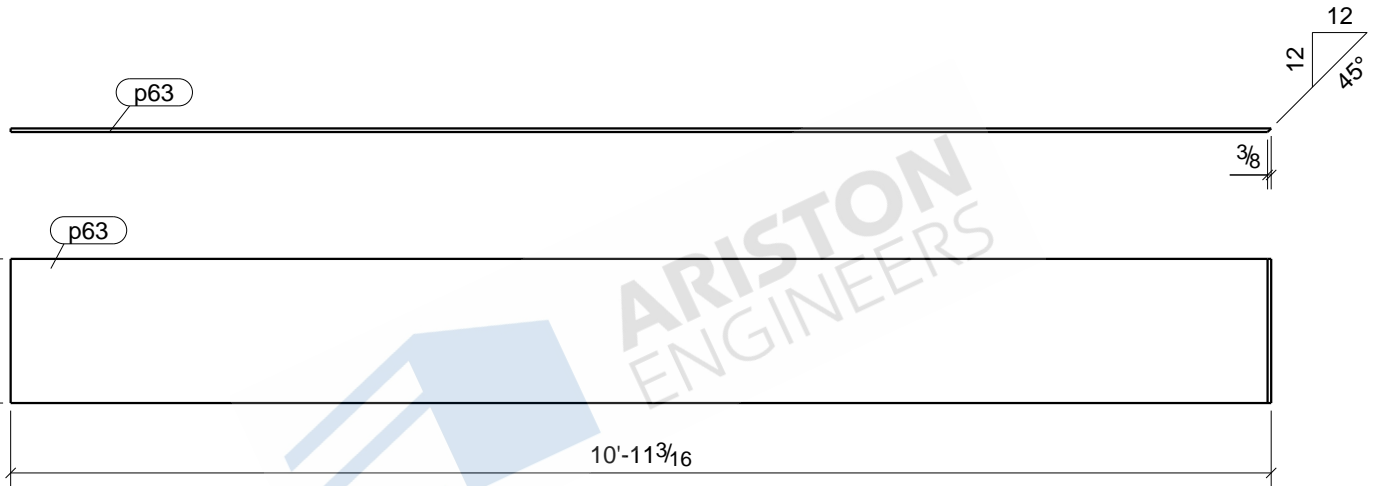
DRAWING No.		p61	
JOB No.		DESCRIPTION	PLATE
DRAWN BY		REVISION No.	
DATE DRAWN		REVISION DATE	



4	M2
2	M4
Qty.	In Assembly

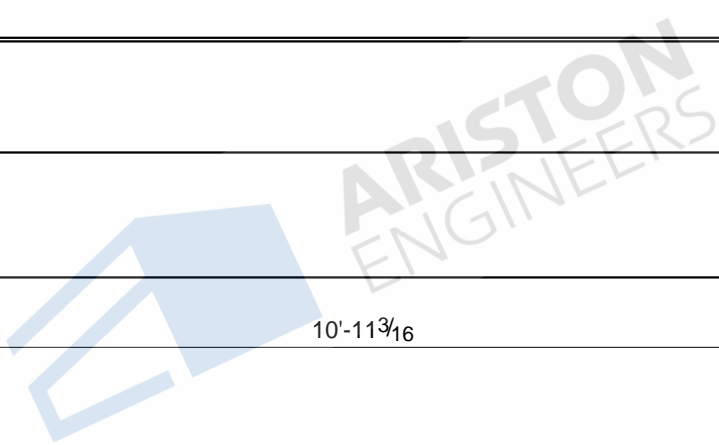
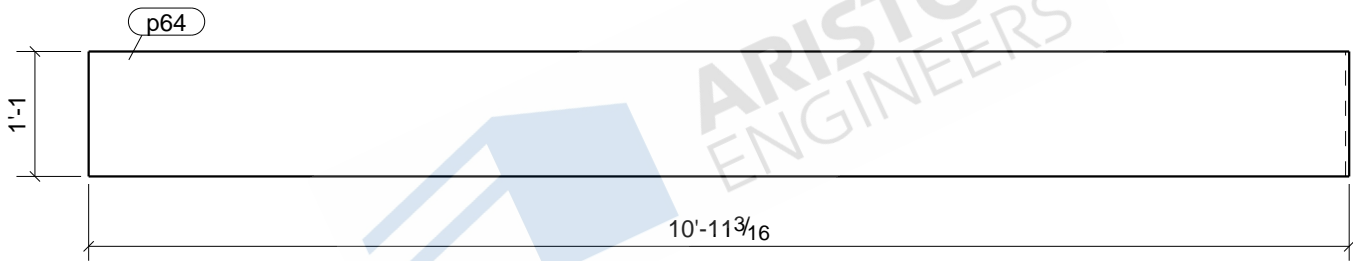
p62	PL3/8"X5 1/2"	A36	6	0'-7 1/2"	49	2	
MARK	SIZE	GRADE	QTY.	LENGTH	AREA	WEIGHT	
MATERIAL LIST FOR WORKSHOP					TOTALS	0 in ²	0 lb/ft

DRAWING No.		p62	
JOB No.		DESCRIPTION	PLATE
DRAWN BY		REVISION No.	
DATE DRAWN		REVISION DATE	



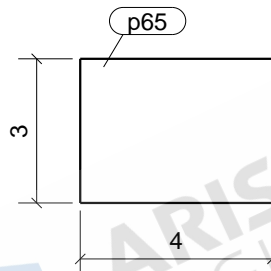
						2	GBL2
						Qty.	In Assembly
p63	PL3/8"X15"	A36	2	10'-11 3/16"	4041	209	
MARK	SIZE	GRADE	QTY.	LENGTH	AREA	WEIGHT	
MATERIAL LIST FOR WORKSHOP					TOTALS	0 in ²	0 lb/ft
				DRAWING No.	p63		
				JOB No.		DESCRIPTION	PLATE
				DRAWN BY		REVISION No.	
				DATE DRAWN		REVISION DATE	

Tekla Structures



						2	GBL1
						Qty.	In Assembly
p64	PL3/8"X13"	A36	2	10'-11 3/16"	3515		181
MARK	SIZE	GRADE	QTY.	LENGTH	AREA		WEIGHT
MATERIAL LIST FOR WORKSHOP					TOTALS	0 in ²	0 lb/ft

Tekla Structures	DRAWING No.		p64			
	JOB No.		DESCRIPTION	PLATE		
	DRAWN BY		REVISION No.			
	DATE DRAWN		REVISION DATE			



ARISTON
ENGINEERS

10	B19
10	B20
10	B27
10	B28
Qty.	In Assembly

p65	PL3/8"X3"	A36	40	0'-4"	29	1
MARK	SIZE	GRADE	QTY.	LENGTH	AREA	WEIGHT
MATERIAL LIST FOR WORKSHOP				TOTALS	0 in ²	0 lb/ft

Tekla Structures

DRAWING No.

p65

JOB No.

DESCRIPTION

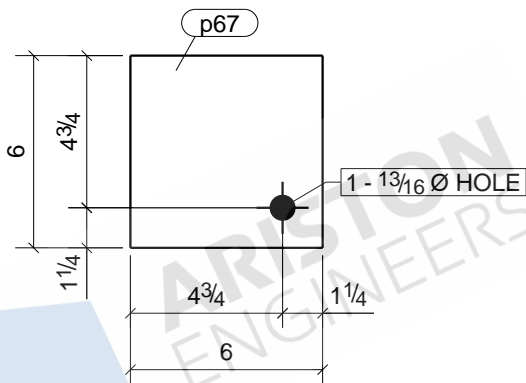
PLATE

DRAWN BY

REVISION No.

DATE DRAWN

REVISION DATE



2	C2
1	C4
1	C9
1	C10
Qty.	In Assembly

p67	PL1/4"X6"	A36	5	0'-6"	78	3
MARK	SIZE	GRADE	QTY.	LENGTH	AREA	WEIGHT
MATERIAL LIST FOR WORKSHOP				TOTALS	0 in ²	0 lb/ft

DRAWING No.		p67	
JOB No.		DESCRIPTION	PLATE
DRAWN BY		REVISION No.	
DATE DRAWN		REVISION DATE	