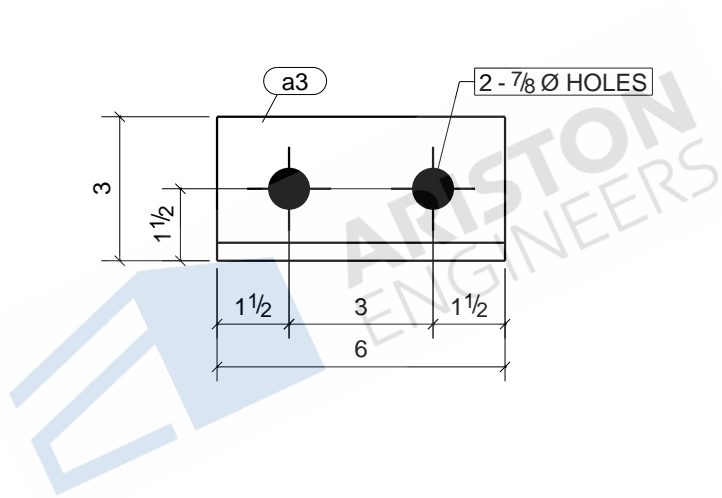
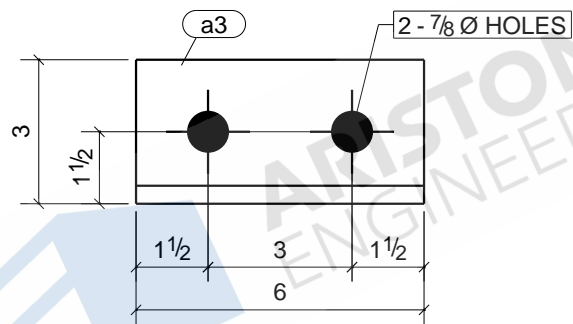


1	1LA1
2	2LA1
3	2LA2
2	3LA1
2	3LA2
2	4LA1
2	4LA2
2	5LA1
2	5LA2
4	6LA1
2	7LA1
Qty.	In Assembly

a2	L5X3-1/2X5/16	A36	24	4'-8"	957	41
MARK	SIZE	GRADE	QTY.	LENGTH	AREA	WEIGHT
MATERIAL LIST FOR WORKSHOP				TOTALS	22971 in ²	976 lb/ft

		JOB DRAWING No. a2		JDA MADISON SELF STORAGE	
		JOB No.	DESCRIPTION		ANGLE
		DRAWN BY	REVISION No.		
		DATE DRAWN	REVISION DATE		

Tekla structures

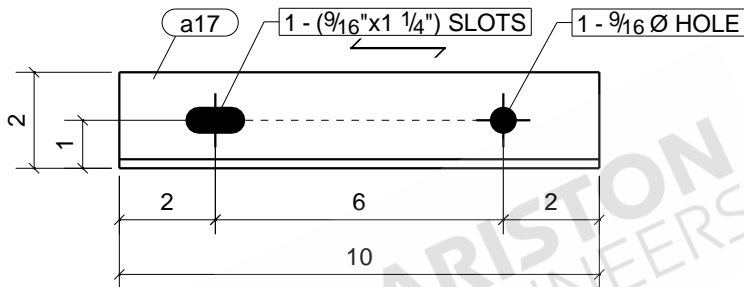


2	S-ST1
Qty.	In Assembly

a3	L3-1/2X3X3/8	A36	2	0'-6"	83	4	
MARK	SIZE	GRADE	QTY.	LENGTH	AREA	WEIGHT	
MATERIAL LIST FOR WORKSHOP					TOTALS	165 in ²	8 lb/ft

JOB DRAWING No.		JDA MADISON SELF STORAGE	
a3			
JOB No.		DESCRIPTION	ANGLE
DRAWN BY		REVISION No.	
DATE DRAWN		REVISION DATE	

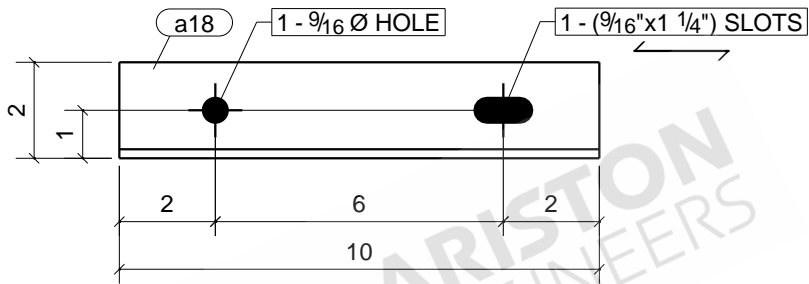
Tekla structures



9	S-ST1
10	S-ST2
7	S-ST3
7	S-ST4
14	S-ST5
8	S-ST6
9	S-ST7
11	S-ST8
10	S-ST9
1	S-TR3
1	S-TR4
1	S-TR5
1	S-TR7
1	S-TR8
2	S-TR9
1	S-TR10
1	S-TR13
2	S-TR18
Qty.	In Assembly

MARK	SIZE	GRADE	QTY.	LENGTH	AREA	WEIGHT	
a17	L2X2X3/16	A36	96	0'-10"	81	2	
MATERIAL LIST FOR WORKSHOP					TOTALS	7817 in ²	195 lb/ft

JOB DRAWING No.		JDA MADISON SELF STORAGE	
a17			
JOB No.		DESCRIPTION	ANGLE
DRAWN BY		REVISION No.	
DATE DRAWN		REVISION DATE	

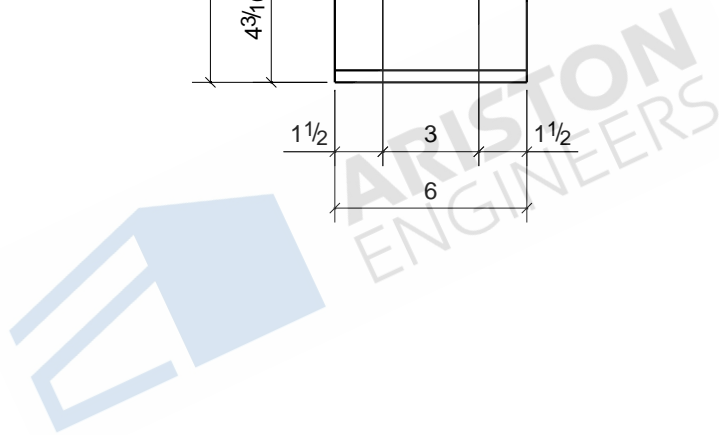
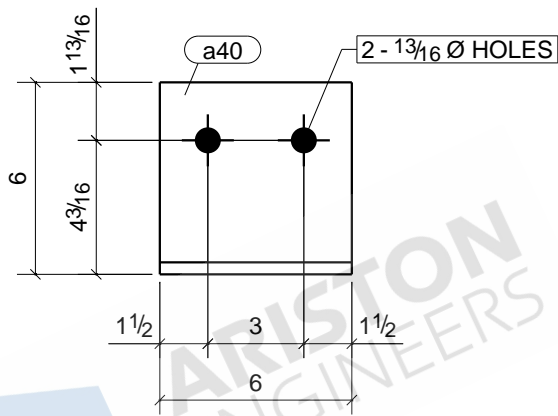


9	S-ST1
10	S-ST2
7	S-ST3
7	S-ST4
14	S-ST5
8	S-ST6
9	S-ST7
11	S-ST8
10	S-ST9
1	S-TR3
1	S-TR4
1	S-TR5
1	S-TR7
1	S-TR8
2	S-TR9
1	S-TR10
1	S-TR13
2	S-TR18
Qty.	In Assembly

a18	L2X2X3/16	A36	96	0'-10"	81	2
MARK	SIZE	GRADE	QTY.	LENGTH	AREA	WEIGHT
MATERIAL LIST FOR WORKSHOP				TOTALS	7817 in ²	195 lb/ft

JOB DRAWING No.		JDA MADISON SELF STORAGE	
a18			
JOB No.		DESCRIPTION	ANGLE
DRAWN BY		REVISION No.	
DATE DRAWN		REVISION DATE	

Tekla structures

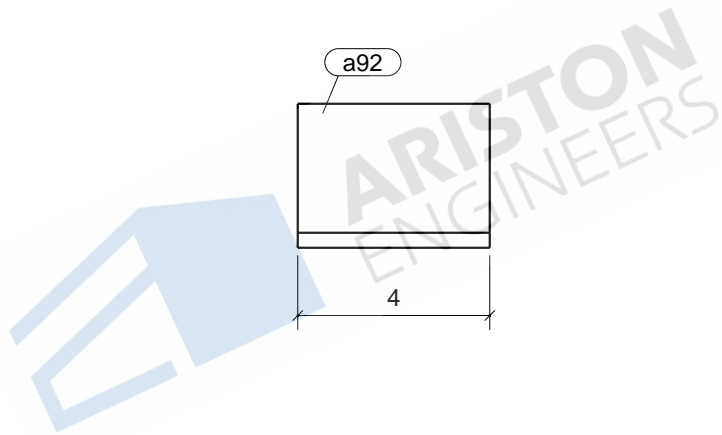


2	1B4
2	1B9
Qty.	In Assembly

a40	L6X4X3/8	A36	4	0'-6"	127	6	
MARK	SIZE	GRADE	QTY.	LENGTH	AREA	WEIGHT	
MATERIAL LIST FOR WORKSHOP					TOTALS	509 in ²	25 lb/ft

JOB DRAWING No.		JDA MADISON SELF STORAGE	
a40			
JOB No.		DESCRIPTION	ANGLE
DRAWN BY		REVISION No.	
DATE DRAWN		REVISION DATE	

Tekla structures

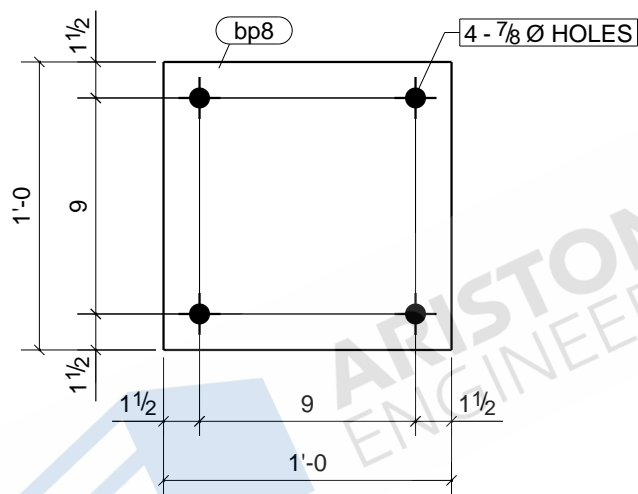


4	1PO1
4	1PO2
4	2PO1
4	3PO1
4	4PO1
4	5PO1
4	6PO1
Qty.	In Assembly

a92	L3X3X5/16	A36	28	0'-4"	52	2
MARK	SIZE	GRADE	QTY.	LENGTH	AREA	WEIGHT
MATERIAL LIST FOR WORKSHOP				TOTALS	1444 in ²	57 lb/ft

	JOB DRAWING No.		JDA MADISON SELF STORAGE		
	a92				
	JOB No.		DESCRIPTION	ANGLE	
	DRAWN BY		REVISION No.		
DATE DRAWN		REVISION DATE			

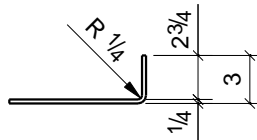
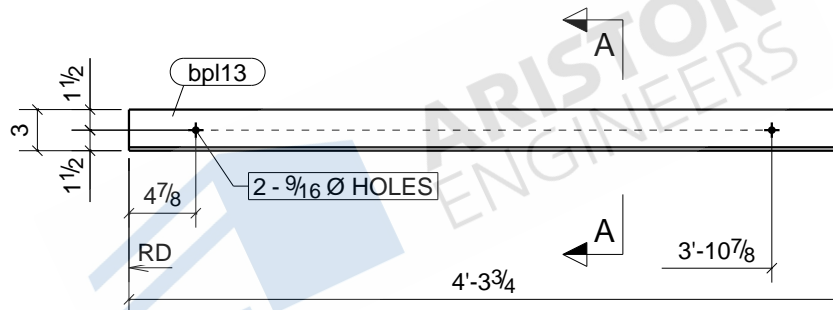
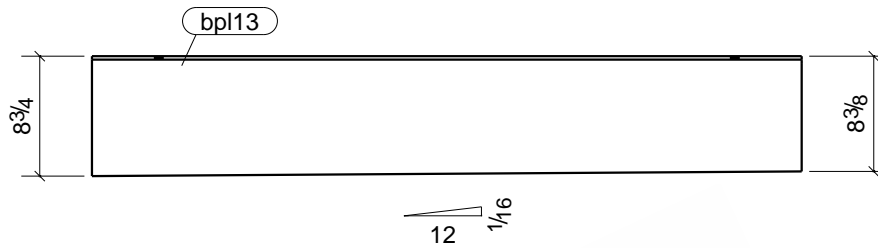
Tekla structures



1	1C1
2	1C9
2	1C24
1	1C31
2	1C38
1	1C39
1	1C40
1	1C41
1	1C42
1	1C43
1	1C44
2	1C45
1	1C47
1	1C49
1	1C50
1	1C51
1	1C52
1	1C53
1	1C56
1	1C57
1	1C60
1	1C61
1	1C62
1	1C63
1	1C67
1	1C68
1	1C70
1	1C73
1	1C74
1	1C75
1	1C80
1	1C81
Qty.	In Assembly

MARK	SIZE	GRADE	QTY.	LENGTH	AREA	WEIGHT	
bp8	PL1"X12"	A36	36	1'-0"	336	41	
MATERIAL LIST FOR WORKSHOP					TOTALS	12096 in ²	1470 lb/ft
			JOB DRAWING No.		JDA MADISON SELF STORAGE		
			bp8				
			JOB No.		DESCRIPTION		
			DRAWN BY		REVISION No.		
			DATE DRAWN		REVISION DATE		
			BASE_PLATE				

Tekla structures

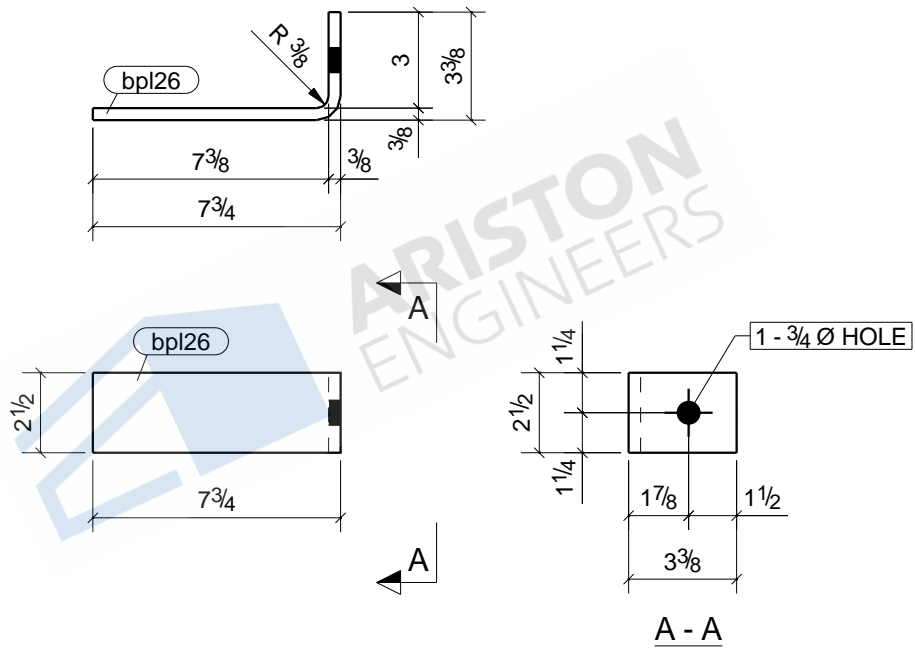


A - A

MATERIAL LIST FOR WORKSHOP		TOTALS		1186 in ²		41 lb/ft	
bpl13	PL1/4"X11 5/16"	A36	1	4'-3 3/4"	1186	41	
MARK	SIZE	GRADE	QTY.	LENGTH	AREA	WEIGHT	

1	1B4
Qty.	In Assembly

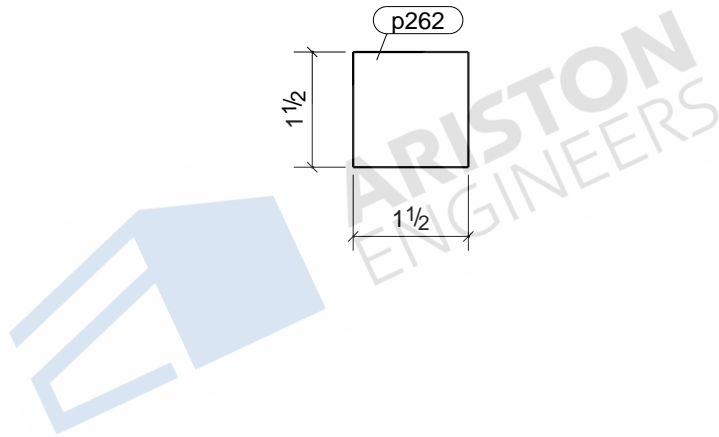
JOB DRAWING No.		JDA MADISON SELF STORAGE	
DRAWN BY		bpl13	
DATE DRAWN		DESCRIPTION	BENT_PLATE
		REVISION No.	
		REVISION DATE	



ARISTON ENGINEERS

					8	LD1
					Qty.	In Assembly
bpl26	PL3/8"X2 1/2"	A36	8	0'-10 1/2"	62	3
MARK	SIZE	GRADE	QTY.	LENGTH	AREA	WEIGHT
MATERIAL LIST FOR WORKSHOP					TOTALS	22 lb/ft
					497 in ²	
			JOB DRAWING No.		JDA MADISON SELF STORAGE	
			bpl26			
			JOB No.		DESCRIPTION	
			DRAWN BY		REVISION No.	
			DATE DRAWN		REVISION DATE	
			BENT_PLATE			

Tekla structures

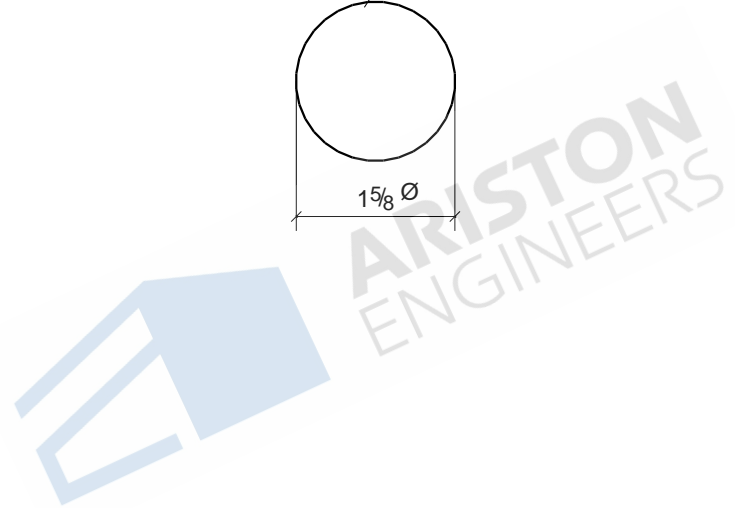
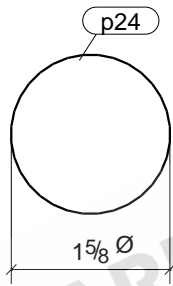


2	S-EG201
2	S-EG202
Qty.	In Assembly

p262	PL1/8"X1 1/2"	A36	4	0'-1 1/2"	5	0
MARK	SIZE	GRADE	QTY.	LENGTH	AREA	WEIGHT
MATERIAL LIST FOR WORKSHOP				TOTALS	21 in ²	0 lb/ft

		JOB DRAWING No.		JDA MADISON SELF STORAGE			
		DRAWING No.		p262			
		DRAWN BY		DESCRIPTION		CAP PLATE	
		DATE DRAWN		REVISION No.			
				REVISION DATE			

Tekla structures

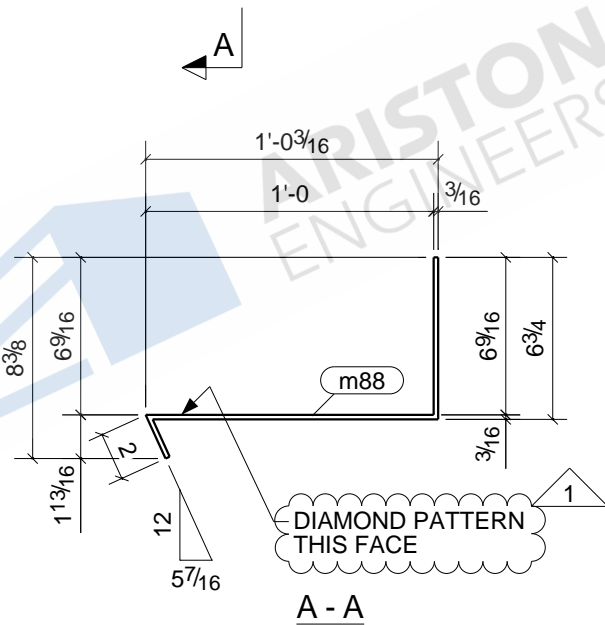
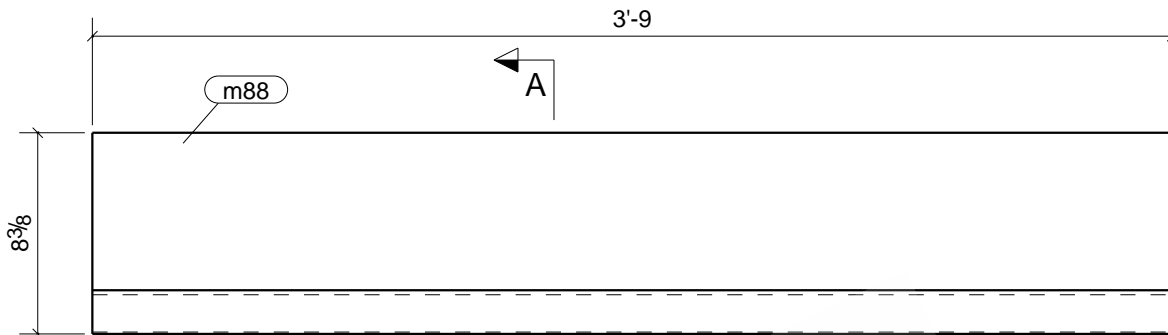


2	S-WR1
4	S-WR2
2	S-WR3
4	S-WR4
4	S-WR5
2	S-WR6
4	S-WR7
Qty.	In Assembly

p24	PL1/8"X1 5/8"	A36	22	0'-1 5/8"	5	0
MARK	SIZE	GRADE	QTY.	LENGTH	AREA	WEIGHT
MATERIAL LIST FOR WORKSHOP				TOTALS	109 in ²	2 lb/ft

JOB DRAWING No.		JDA MADISON SELF STORAGE	
p24			
JOB No.		DESCRIPTION	CAP_PLATE
DRAWN BY		REVISION No.	
DATE DRAWN		REVISION DATE	

Tekla structures

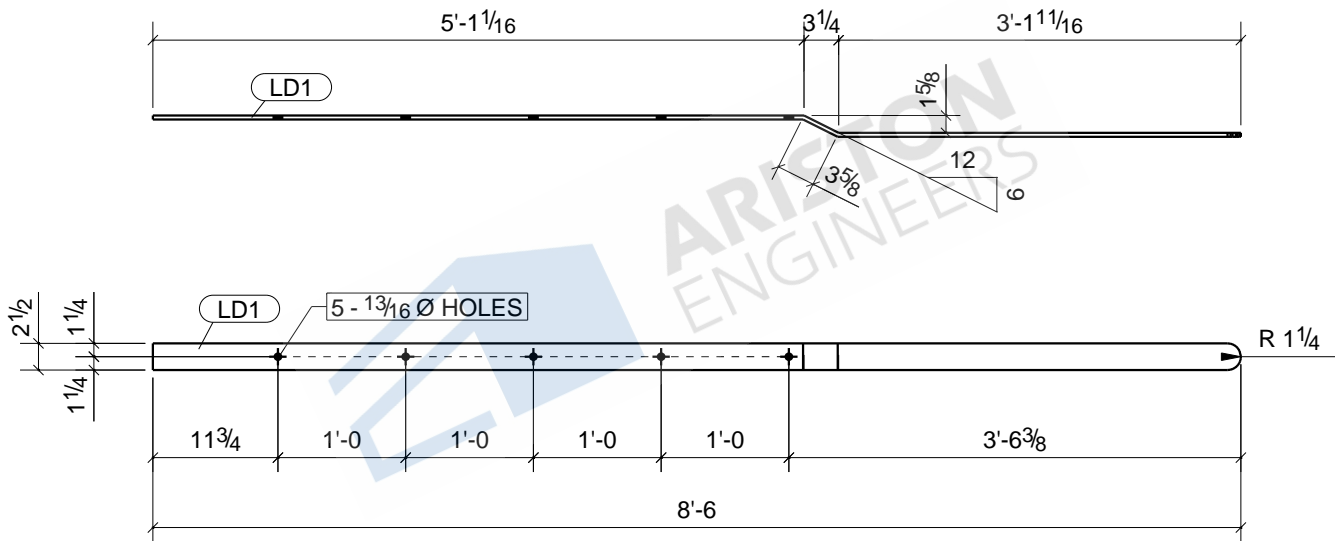


9	S-ST1
10	S-ST2
Qty.	In Assembly

m88	CP3/16"X20 15/16"	A36	19	3'-9"	1866	49	
MARK	SIZE	GRADE	QTY.	LENGTH	AREA	WEIGHT	
MATERIAL LIST FOR WORKSHOP					TOTALS	35450 in ²	930 lb/ft

JOB DRAWING No.		JDA MADISON SELF STORAGE	
m88			
JOB No.		DESCRIPTION	DIAMOND PLATE
DRAWN BY		REVISION No.	
DATE DRAWN		REVISION DATE	

Tekla structures

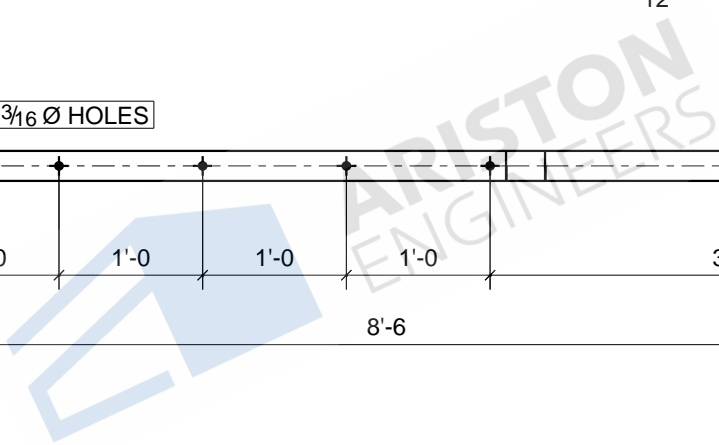
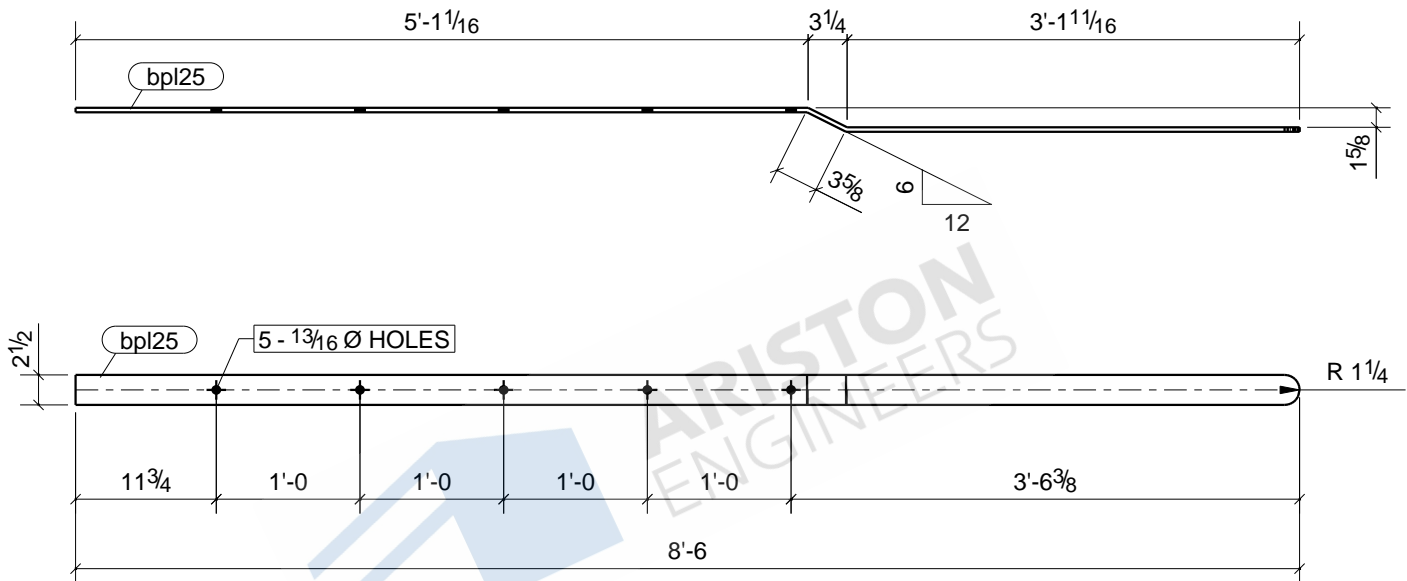


1	LD1
Qty.	In Assembly

MARK	SIZE	GRADE	QTY.	LENGTH	AREA	WEIGHT
LD1	PL3/8"X2 1/2"	A36	1	8'-6 3/16"	589	27
MATERIAL LIST FOR WORKSHOP					TOTALS	27 lb/ft
					589 in ²	

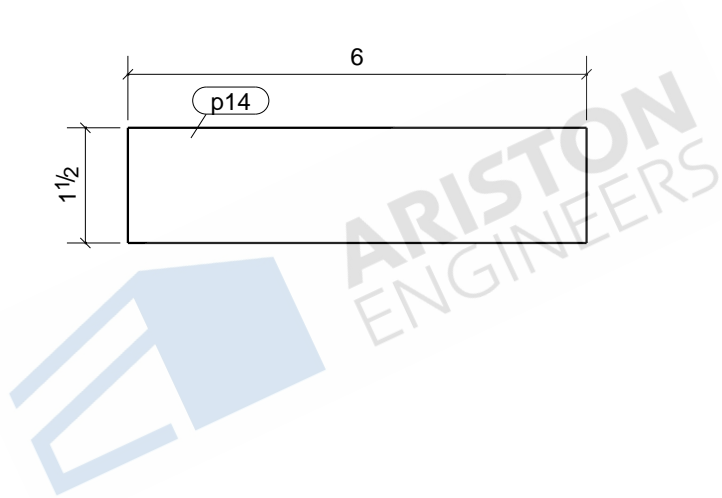
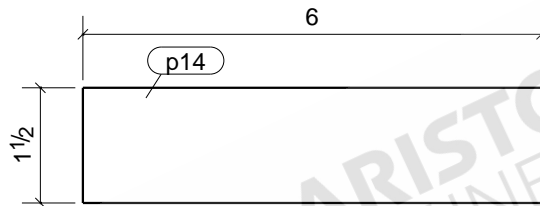
JOB DRAWING No.		JDA MADISON SELF STORAGE	
LD1			
JOB No.		DESCRIPTION	LADDER
DRAWN BY		REVISION No.	
DATE DRAWN		REVISION DATE	

Tekla structures



						1	LD1
						Qty.	In Assembly
bpl25	PL3/8"X2 1/2"	A36	1	8'-6 3/16"	589	27	
MARK	SIZE	GRADE	QTY.	LENGTH	AREA	WEIGHT	
MATERIAL LIST FOR WORKSHOP					TOTALS	589 in ²	27 lb/ft
			JOB DRAWING No.		JDA MADISON SELF STORAGE		
			bpl25				
			JOB No.		DESCRIPTION		
			DRAWN BY		LADDER		
			DATE DRAWN		REVISION No.		
					REVISION DATE		

Tekla structures

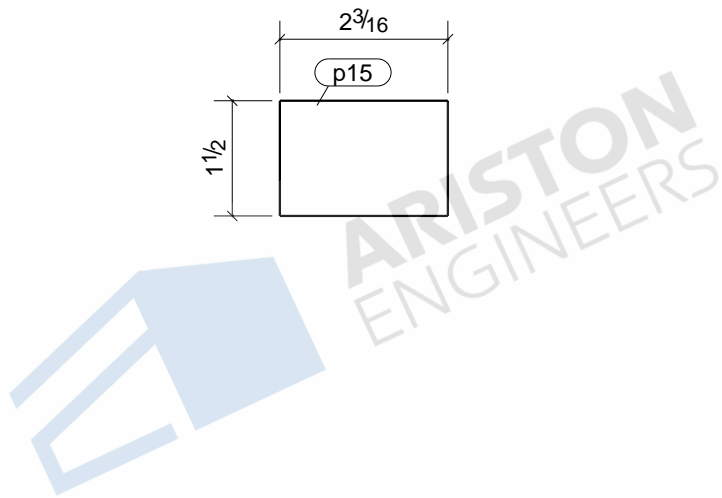
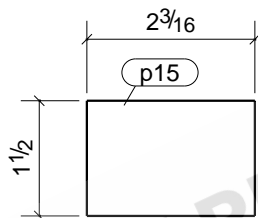


2	S-ST1
2	S-ST2
2	S-ST3
2	S-ST4
4	S-ST5
2	S-ST6
2	S-ST8
2	S-ST9
Qty.	In Assembly

p14	PL1/4"X1 1/2"	A36	18	0'-6"	22	1
MARK	SIZE	GRADE	QTY.	LENGTH	AREA	WEIGHT
MATERIAL LIST FOR WORKSHOP				TOTALS	390 in ²	11 lb/ft

	JOB DRAWING No.		JDA MADISON SELF STORAGE		
	p14				
	JOB No.		DESCRIPTION	PLATE	
	DRAWN BY		REVISION No.		
DATE DRAWN		REVISION DATE			

Tekla structures

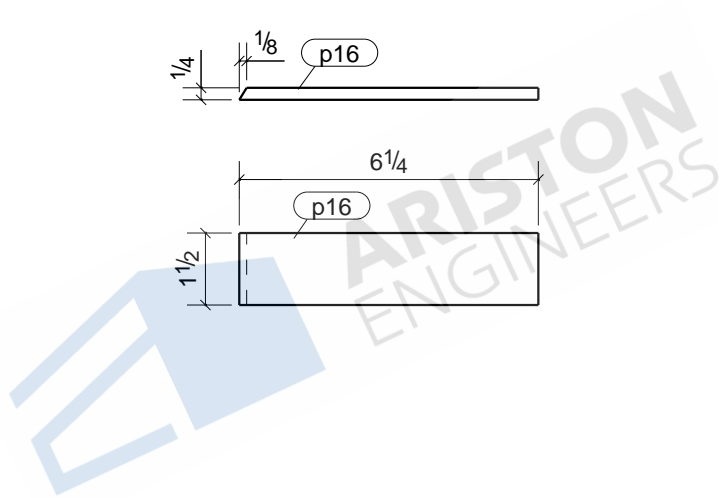
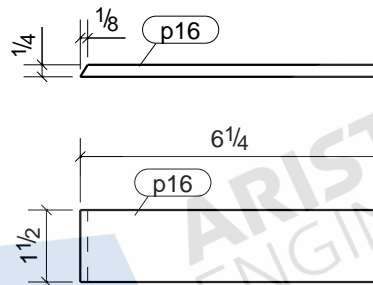


2	S-ST1
2	S-ST2
2	S-ST3
2	S-ST4
4	S-ST5
2	S-ST6
2	S-ST7
2	S-ST8
2	S-ST9
Qty.	In Assembly

p15	PL1/4"X1 1/2"	A36	20	0'-2 3/16"	8	0
MARK	SIZE	GRADE	QTY.	LENGTH	AREA	WEIGHT
MATERIAL LIST FOR WORKSHOP				TOTALS	168 in ²	5 lb/ft

JOB DRAWING No.		JDA MADISON SELF STORAGE			
p15					
JOB No.		DESCRIPTION	PLATE		
DRAWN BY		REVISION No.			
DATE DRAWN		REVISION DATE			

Tekla structures

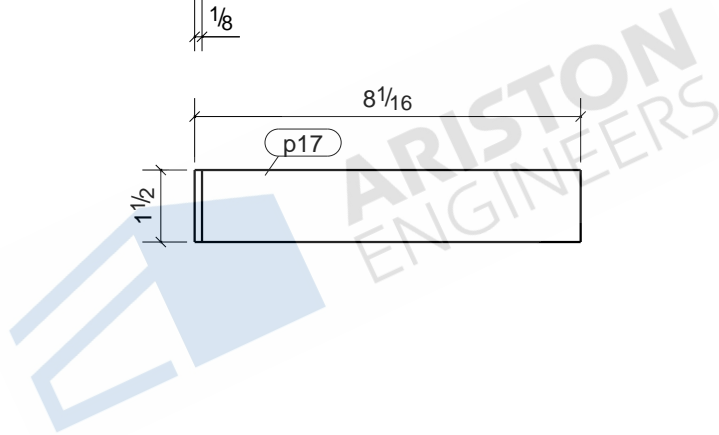
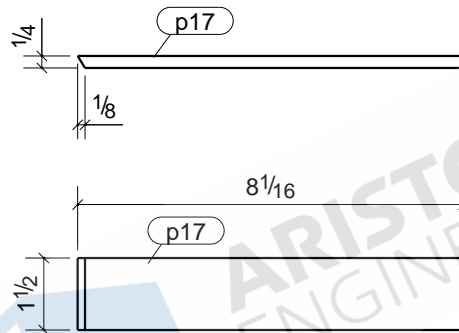


2	S-ST2
Qty.	In Assembly

p16	PL1/4"X1 1/2"	A36	2	0'-6 1/4"	22	1	
MARK	SIZE	GRADE	QTY.	LENGTH	AREA	WEIGHT	
MATERIAL LIST FOR WORKSHOP					TOTALS	45 in ²	1 lb/ft

Tekla structures

JOB DRAWING No.		JDA MADISON SELF STORAGE	
p16			
JOB No.		DESCRIPTION	PLATE
DRAWN BY		REVISION No.	
DATE DRAWN		REVISION DATE	

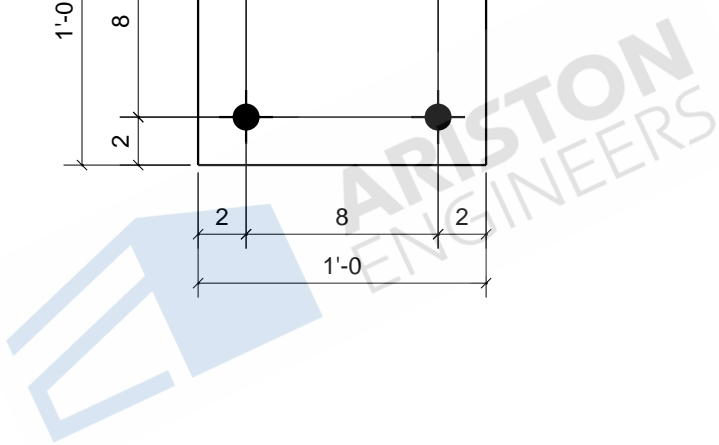
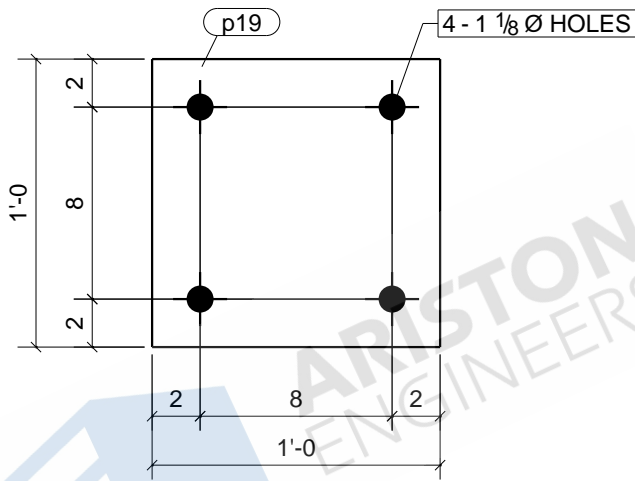


2	S-ST1
Qty.	In Assembly

p17	PL1/4"X1 1/2"	A36	2	0'-8 1/16"	29	1	
MARK	SIZE	GRADE	QTY.	LENGTH	AREA	WEIGHT	
MATERIAL LIST FOR WORKSHOP					TOTALS	57 in ²	2 lb/ft

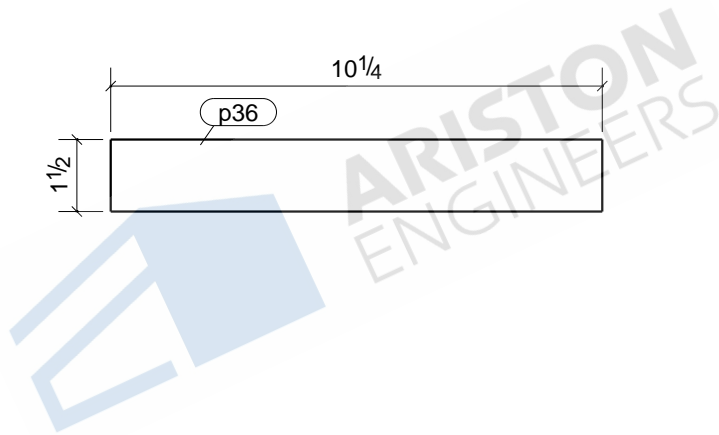
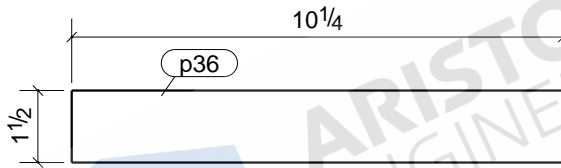
Tekla structures

JOB DRAWING No.		JDA MADISON SELF STORAGE	
p17			
JOB No.		DESCRIPTION	PLATE
DRAWN BY		REVISION No.	
DATE DRAWN		REVISION DATE	



1	1C2
1	1C4
1	1C5
4	1C6
2	1C7
1	1C10
1	1C12
5	1C13
12	1C14
1	1C15
1	1C18
3	1C20
1	1C21
1	1C22
4	1C25
1	1C30
1	1C77
2	1C78
1	1C88
1	1C89
Qty.	In Assembly

p19	PL1"x12"	A36	45	1'-0"	336	41
MARK	SIZE	GRADE	QTY.	LENGTH	AREA	WEIGHT
MATERIAL LIST FOR WORKSHOP				TOTALS	15120 in ²	1838 lb/ft
			JOB DRAWING No.		JDA MADISON SELF STORAGE	
			p19			
			JOB No.		DESCRIPTION	PLATE
			DRAWN BY		REVISION No.	
DATE DRAWN		REVISION DATE				

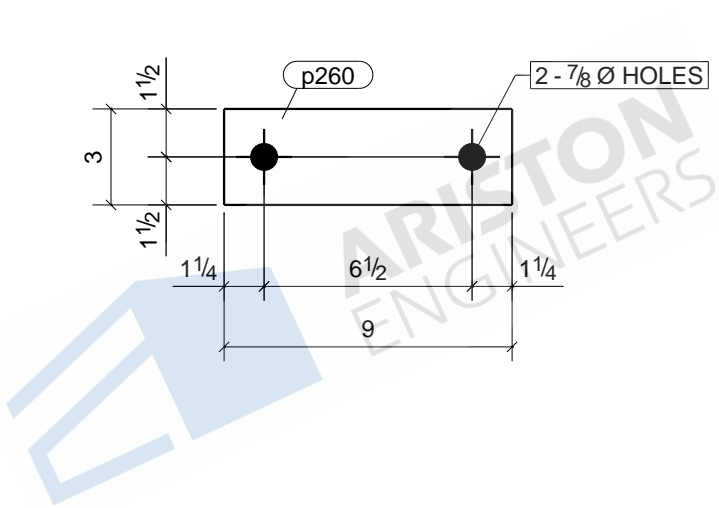
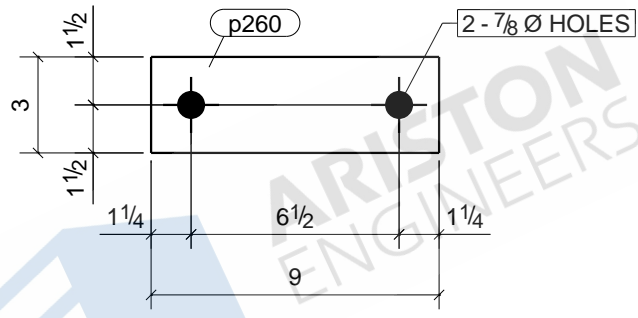


2	S-ST1
Qty.	In Assembly

p36	PL1/4"X1 1/2"	A36	2	0'-10 1/4"	37	1	
MARK	SIZE	GRADE	QTY.	LENGTH	AREA	WEIGHT	
MATERIAL LIST FOR WORKSHOP					TOTALS	73 in ²	2 lb/ft

JOB DRAWING No.		JDA MADISON SELF STORAGE	
p36			
JOB No.		DESCRIPTION	PLATE
DRAWN BY		REVISION No.	
DATE DRAWN		REVISION DATE	

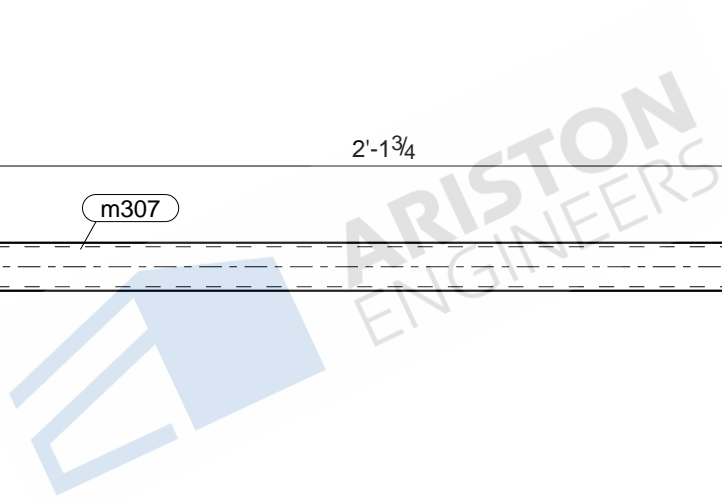
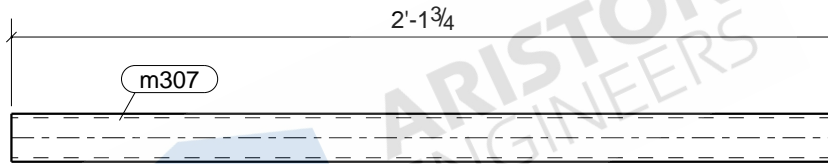
Tekla structures



2	S-EG201
Qty.	In Assembly

p260	PL1/4"X3"	A36	2	0'-9"	60	2	
MARK	SIZE	GRADE	QTY.	LENGTH	AREA	WEIGHT	
MATERIAL LIST FOR WORKSHOP					TOTALS	120 in ²	4 lb/ft
			JOB DRAWING No.		JDA MADISON SELF STORAGE		
			p260				
			JOB No.		DESCRIPTION		
			DRAWN BY		REVISION No.		
			DATE DRAWN		REVISION DATE		
			PLATE				

Tekla structures

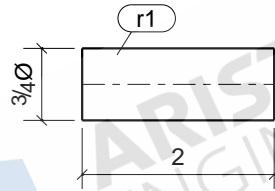


1	S-EG201
1	S-EG202
Qty.	In Assembly

m307	HSS1-1/2X1-1/2X1/8	A53	2	2'-1 3/4"	145	4	
MARK	SIZE	GRADE	QTY.	LENGTH	AREA	WEIGHT	
MATERIAL LIST FOR WORKSHOP					TOTALS	290 in ²	9 lb/ft

JOB DRAWING No.		JDA MADISON SELF STORAGE	
m307			
JOB No.		DESCRIPTION	POST
DRAWN BY		REVISION No.	
DATE DRAWN		REVISION DATE	

Tekla structures

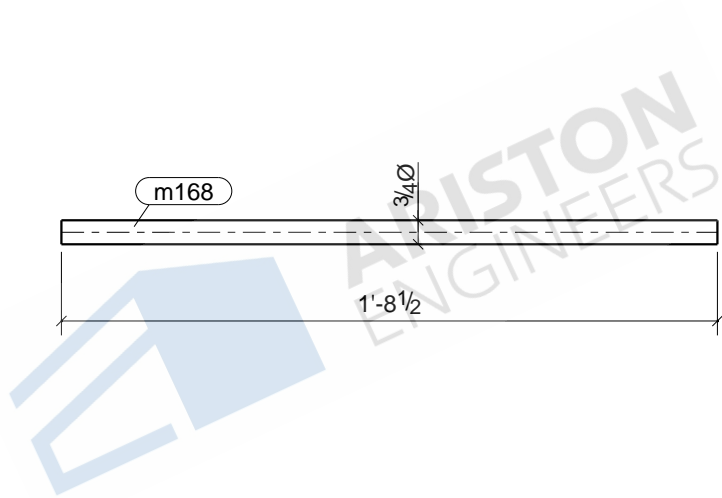
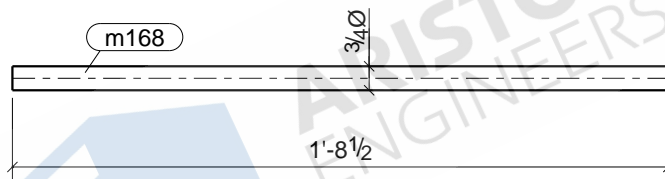


ARISTON
ENGINEERS

2	1BP1
6	1BP2
4	1BP3
2	1BP4
2	1BP5
2	1BP6
4	2BP1
4	2BP2
2	3BP1
2	3BP2
4	3BP3
2	4BP1
4	4BP2
2	4BP3
2	5BP1
4	5BP2
4	5BP3
2	5BP4
2	5BP5
2	5BP6
2	6BP1
2	6BP2
4	6BP3
2	6BP4
12	7BP1
4	7BP2
4	7BP3
4	7BP4
Qty.	In Assembly

r1	ROD3/4"	A36	92	0'-2"	5	0	
MARK	SIZE	GRADE	QTY.	LENGTH	AREA	WEIGHT	
MATERIAL LIST FOR WORKSHOP					TOTALS	496 in ²	21 lb/ft
			JOB DRAWING No.		JDA MADISON SELF STORAGE		
			r1				
			JOB No.	DESCRIPTION		ROD	
			DRAWN BY	REVISION No.			
			DATE DRAWN	REVISION DATE			

Tekla structures

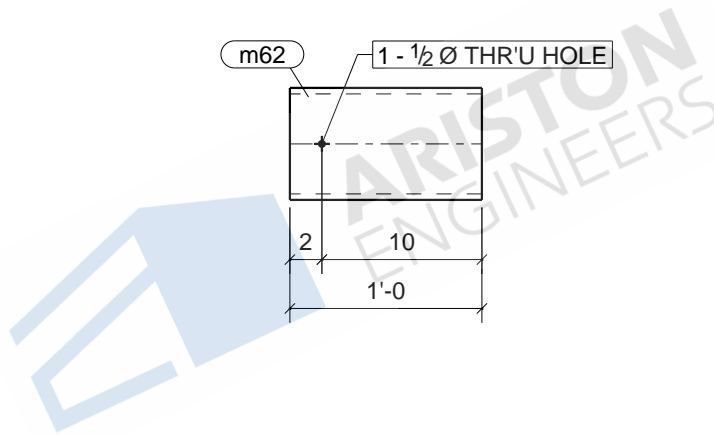


5	LD1
Qty.	In Assembly

m168	ROD3/4"	A36	5	1'-8 1/2"	48	2	
MARK	SIZE	GRADE	QTY.	LENGTH	AREA	WEIGHT	
MATERIAL LIST FOR WORKSHOP					TOTALS	239 in ²	12 lb/ft

JOB DRAWING No.		JDA MADISON SELF STORAGE			
DRAWING No.		m168			
DRAWN BY		DESCRIPTION		RUNG	
DATE DRAWN		REVISION No.			
		REVISION DATE			

Tekla structures

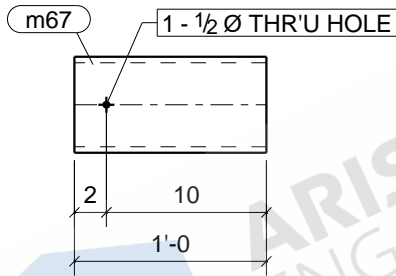


1	1C2
1	1C4
1	1C5
4	1C6
2	1C7
1	1C10
1	1C12
5	1C13
12	1C14
1	1C15
1	1C18
3	1C20
1	1C21
1	1C22
1	1C23
4	1C25
1	1C26
1	1C28
1	1C30
1	1C34
1	1C35
1	1C77
2	1C78
1	1C88
1	1C89
Qty.	In Assembly

m62	HSS7X7X3/8	A500-GR.C	50	1'-0"	321	31	
MARK	SIZE	GRADE	QTY.	LENGTH	AREA	WEIGHT	
MATERIAL LIST FOR WORKSHOP					TOTALS	16056 in ²	1526 lb/ft

JOB DRAWING No.		JDA MADISON SELF STORAGE	
m62			
JOB No.		DESCRIPTION	SLEEVE
DRAWN BY		REVISION No.	
DATE DRAWN		REVISION DATE	

Tekla structures

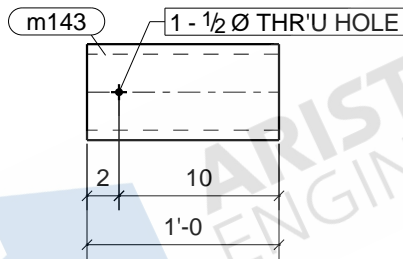


1	1C1
8	1C3
1	1C8
2	1C9
33	1C11
1	1C16
1	1C19
2	1C24
1	1C27
1	1C29
1	1C31
1	1C37
2	1C38
1	1C39
1	1C40
1	1C41
1	1C43
1	1C44
2	1C45
1	1C49
1	1C50
1	1C52
1	1C53
1	1C54
1	1C55
1	1C58
1	1C59
1	1C60
1	1C61
1	1C62
1	1C63
1	1C67
1	1C68
1	1C69
1	1C70
1	1C71
1	1C73
1	1C74
1	1C75
1	1C79
1	1C80
Qty.	In Assembly

m67	HSS6X6X3/8	A500-GR.C	84	1'-0"	274	26
MARK	SIZE	GRADE	QTY.	LENGTH	AREA	WEIGHT
MATERIAL LIST FOR WORKSHOP					TOTALS	2167 lb/ft

JOB DRAWING No.		JDA MADISON SELF STORAGE	
m67			
JOB No.		DESCRIPTION	SLEEVE
DRAWN BY		REVISION No.	
DATE DRAWN		REVISION DATE	

Tekla structures

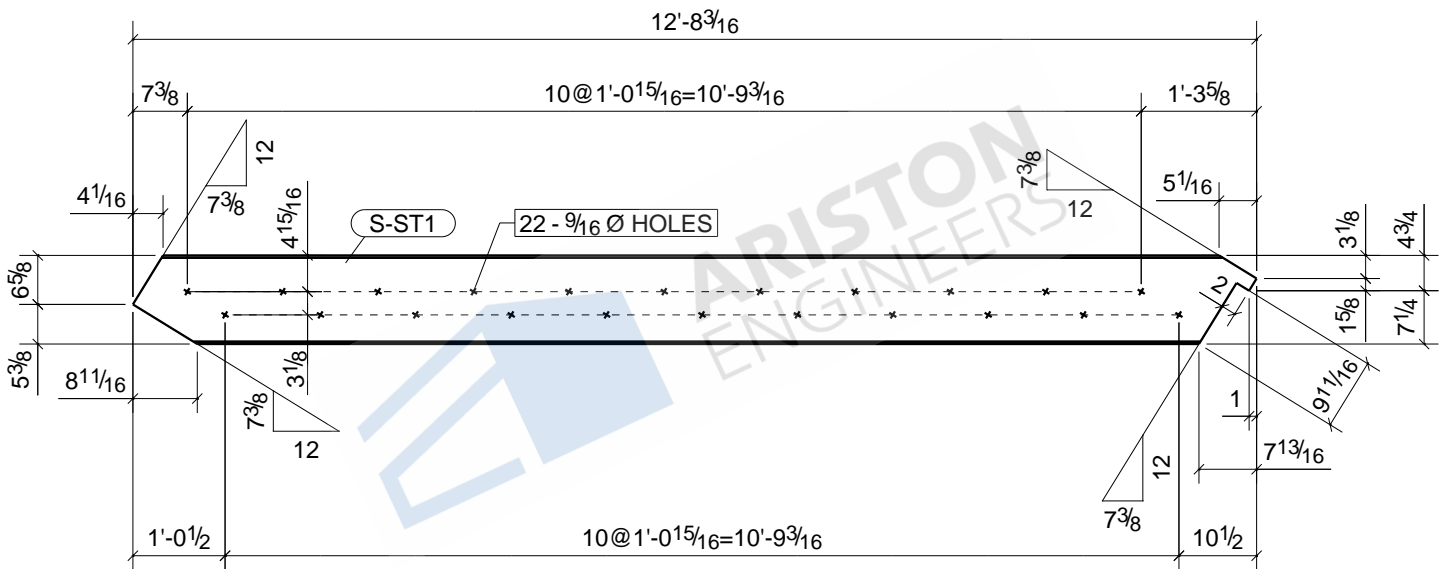


1	2C1
1	2C2
8	2C3
1	2C4
1	2C5
1	2C7
24	2C12
2	2C15
1	2C20
1	2C22
1	2C24
5	2C26
1	2C27
1	2C28
2	2C29
Qty.	In Assembly

m143	HSS6X6X5/8	A500-GR.C	51	1'-0"	264	40	
MARK	SIZE	GRADE	QTY.	LENGTH	AREA	WEIGHT	
MATERIAL LIST FOR WORKSHOP					TOTALS	13440 in ²	2031 lb/ft

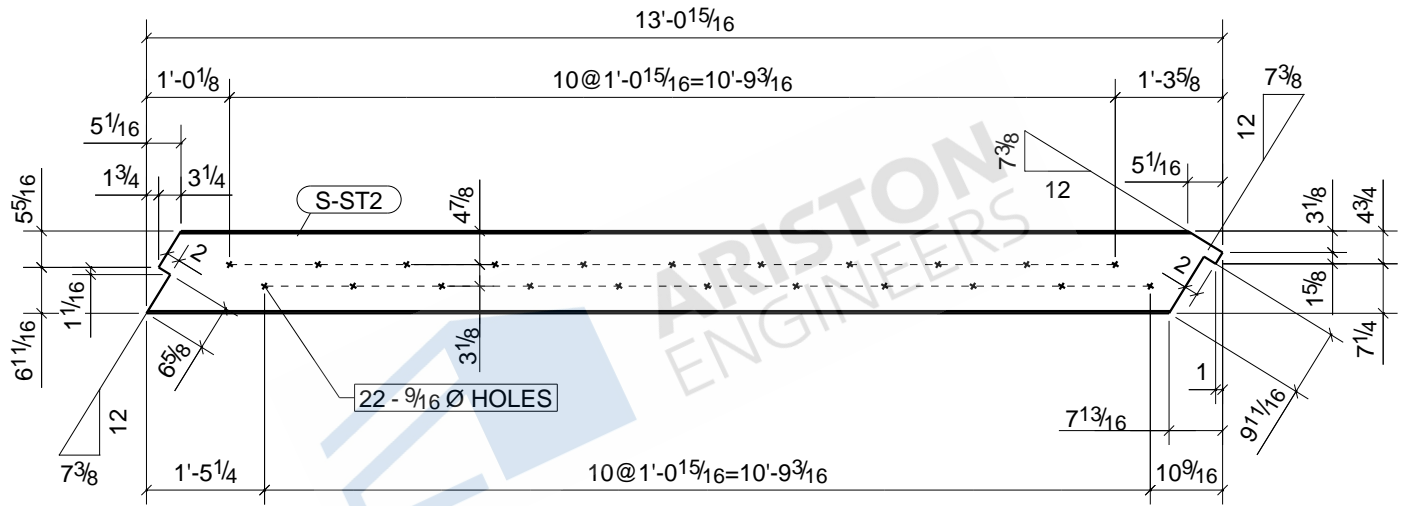
JOB DRAWING No.		JDA MADISON SELF STORAGE	
m143			
JOB No.		DESCRIPTION	SLEEVE
DRAWN BY		REVISION No.	
DATE DRAWN		REVISION DATE	

Tekla structures



Tekla structures

						1	S-ST1
						Qty.	In Assembly
S-ST1	MC12X10.6	A36	1	12'-8 3/16"	4265	134	
MARK	SIZE	GRADE	QTY.	LENGTH	AREA	WEIGHT	
MATERIAL LIST FOR WORKSHOP					TOTALS	4265 in ²	134 lb/ft
			JOB DRAWING No.		JDA MADISON SELF STORAGE S-ST1		
			JOB No.		DESCRIPTION	STAIR	
			DRAWN BY		REVISION No.		
			DATE DRAWN		REVISION DATE		

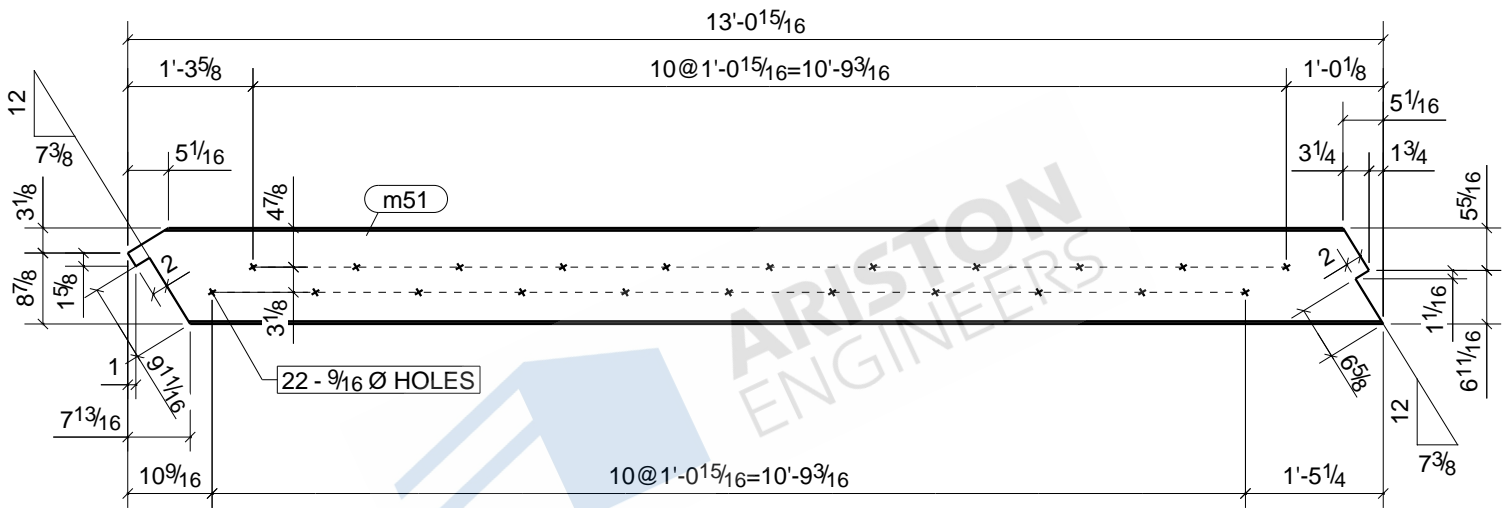


1	S-ST2
Qty.	In Assembly

S-ST2	MC12X10.6	A36	1	13'-0 15/16"	4439	138	
MARK	SIZE	GRADE	QTY.	LENGTH	AREA	WEIGHT	
MATERIAL LIST FOR WORKSHOP					TOTALS	4439 in ²	138 lb/ft

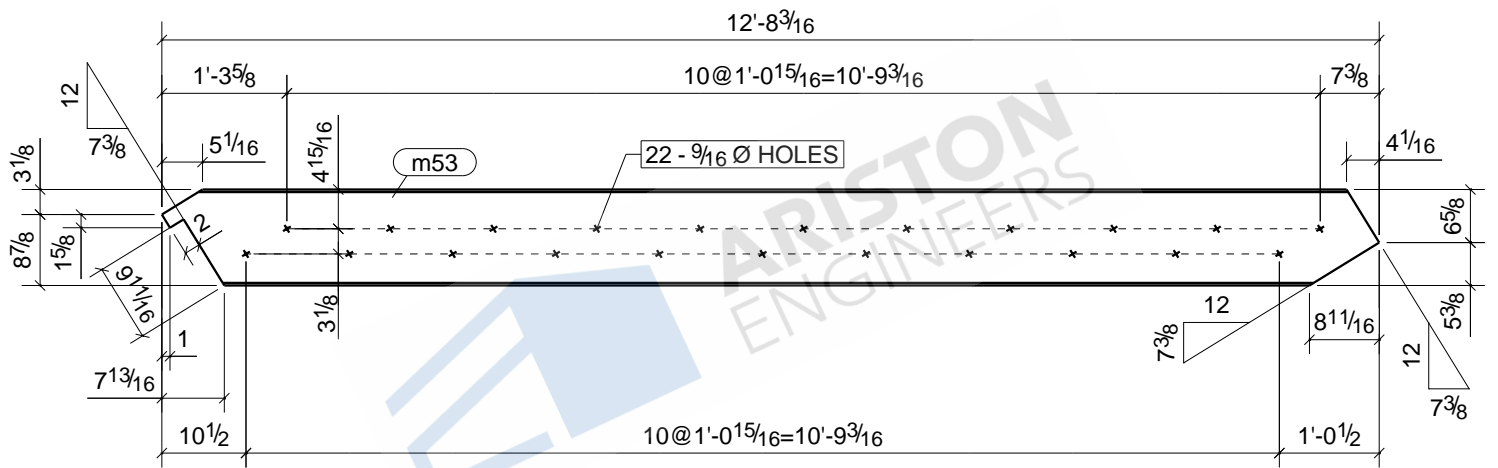
JOB DRAWING No.		JDA MADISON SELF STORAGE S-ST2	
JOB No.		DESCRIPTION	STAIR
DRAWN BY		REVISION No.	
DATE DRAWN		REVISION DATE	

Tekla structures



Tekla structures

						1	S-ST2
						Qty.	In Assembly
m51	MC12X10.6	A36	1	13'-0 15/16"	4439	138	
MARK	SIZE	GRADE	QTY.	LENGTH	AREA	WEIGHT	
MATERIAL LIST FOR WORKSHOP					TOTALS	4439 in ²	138 lb/ft
			JOB DRAWING No.		JDA MADISON SELF STORAGE		
			m51				
			JOB No.		DESCRIPTION	STRINGER	
			DRAWN BY		REVISION No.		
			DATE DRAWN		REVISION DATE		



Tekla structures

						1	S-ST1
						Qty.	In Assembly
m53	MC12X10.6	A36	1	12'-8 3/16"	4265	134	
MARK	SIZE	GRADE	QTY.	LENGTH	AREA	WEIGHT	
MATERIAL LIST FOR WORKSHOP					TOTALS	4265 in ²	134 lb/ft
			JOB DRAWING No.		JDA MADISON SELF STORAGE		
			m53				
			JOB No.		DESCRIPTION	STRINGER	
			DRAWN BY		REVISION No.		
			DATE DRAWN		REVISION DATE		