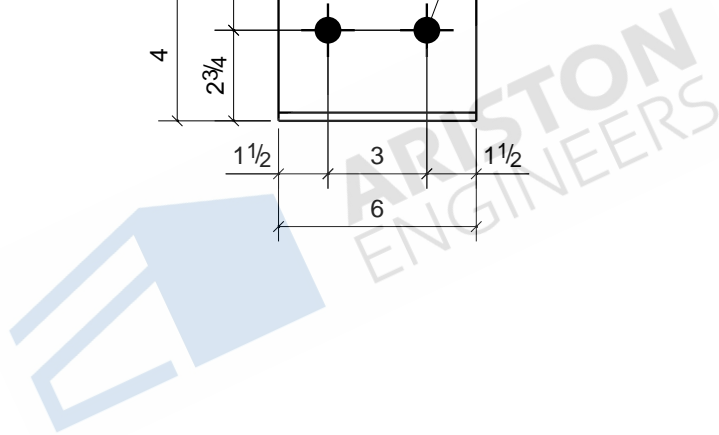
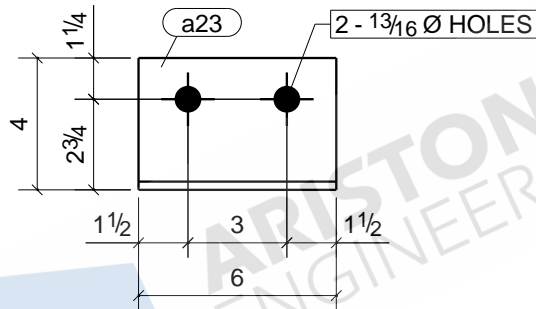


1	B84
6	B85
3	B86
3	B87
Qty.	In Assembly

a22	L4X4X1/4	A36	13	0'-6"	100	3
MARK	SIZE	GRADE	QTY.	LENGTH	AREA	WEIGHT
MATERIAL LIST FOR WORKSHOP				TOTALS	1298 in ²	43 lb/ft

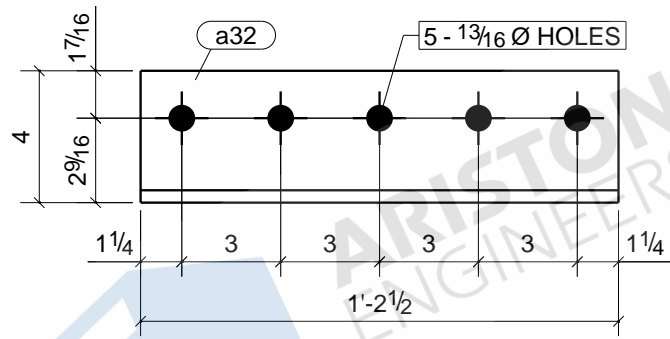
JOB DRAWING No.	a22		
JOB No.		DESCRIPTION	ANGLE
DRAWN BY	ASM	REVISION No.	0
DATE DRAWN	03/23/2021	REVISION DATE	06/16/2021



1	B84
1	B86
Qty.	In Assembly

MARK	SIZE	GRADE	QTY.	LENGTH	AREA	WEIGHT
a23	L4X4X1/4	A36	2	0'-6"	100	3
MATERIAL LIST FOR WORKSHOP					TOTALS	200 in ² 7 lb/ft

JOB DRAWING No.		a23	
JOB No.		DESCRIPTION	ANGLE
DRAWN BY	ASM	REVISION No.	0
DATE DRAWN	03/23/2021	REVISION DATE	06/16/2021

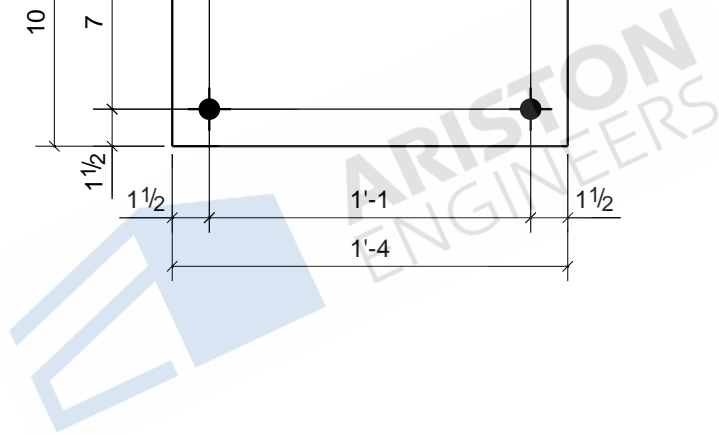
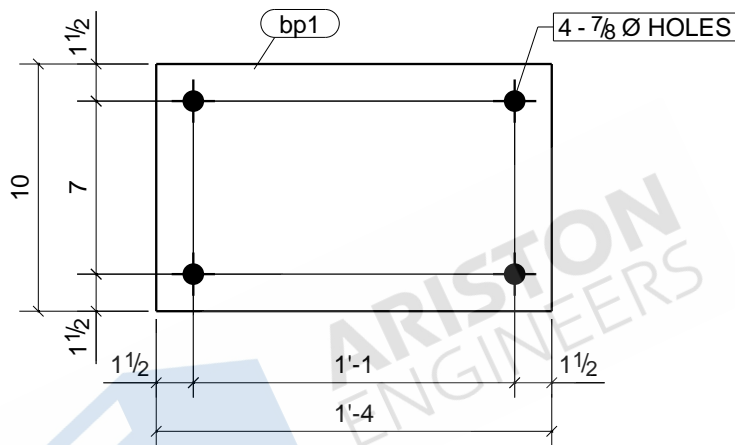


4	B80
4	B81
Qty.	In Assembly

a32	L4X3-1/2X3/8	A36	8	1'-2 1/2"	223	11
MARK	SIZE	GRADE	QTY.	LENGTH	AREA	WEIGHT
MATERIAL LIST FOR WORKSHOP				TOTALS	1783 in ²	88 lb/ft

JOB DRAWING No.		a32	
JOB No.		DESCRIPTION	ANGLE
DRAWN BY	ASM	REVISION No.	0
DATE DRAWN	03/23/2021	REVISION DATE	06/16/2021

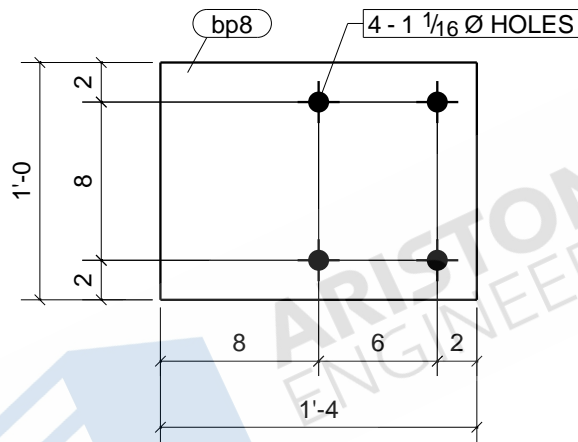
Tekia structures



1	C12
Qty.	In Assembly

bp1	PL3/4"X10"	A36	1	1'-4"	359	34	
MARK	SIZE	GRADE	QTY.	LENGTH	AREA	WEIGHT	
MATERIAL LIST FOR WORKSHOP					TOTALS	359 in ²	34 lb/ft

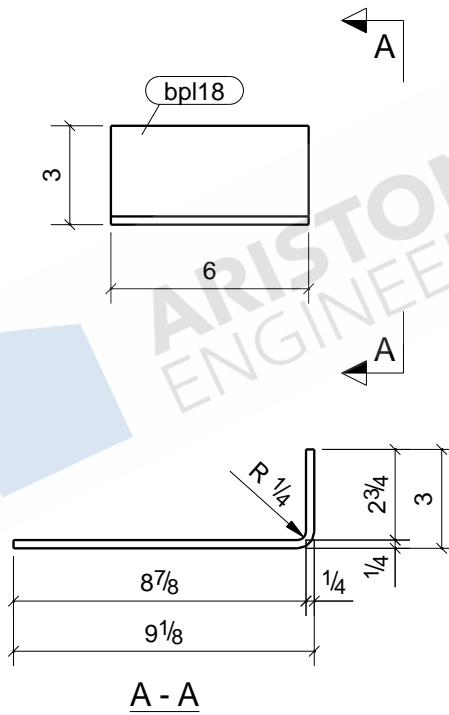
JOB DRAWING No.		bp1	
JOB No.		DESCRIPTION	BASE PLATE
DRAWN BY	ASM	REVISION No.	0
DATE DRAWN	03/23/2021	REVISION DATE	06/16/2021



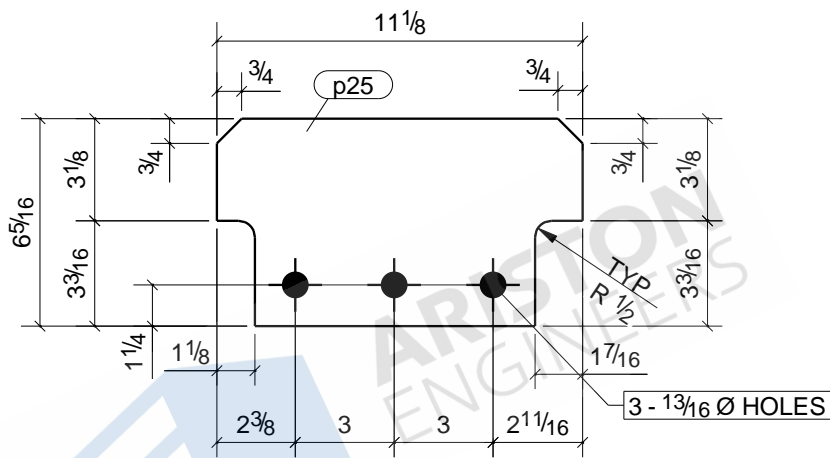
1	C23
1	C24
Qty.	In Assembly

bp8	PL3/4"X12"	A36	2	1'-4"	426	41	
MARK	SIZE	GRADE	QTY.	LENGTH	AREA	WEIGHT	
MATERIAL LIST FOR WORKSHOP					TOTALS	852 in ²	82 lb/ft

JOB DRAWING No.		bp8	
JOB No.		DESCRIPTION	BASE PLATE
DRAWN BY	ASM	REVISION No.	0
DATE DRAWN	03/23/2021	REVISION DATE	06/16/2021



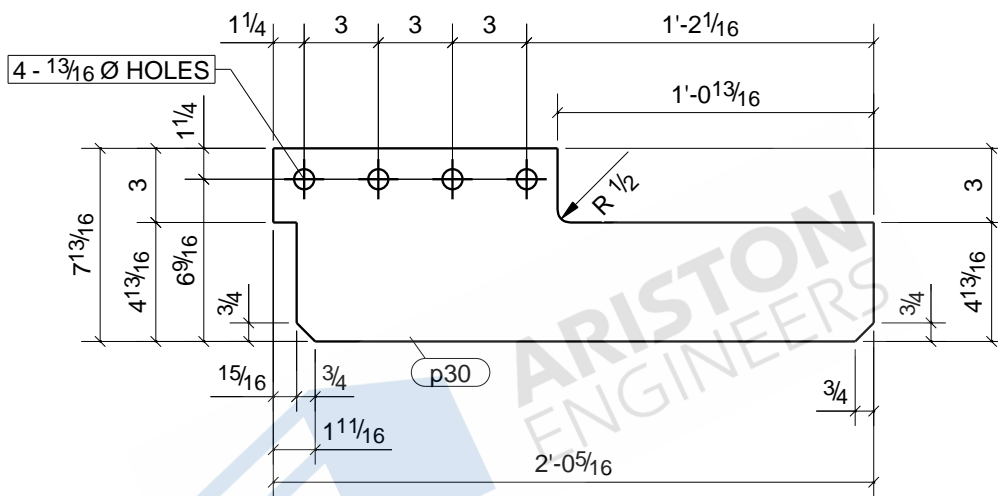
MATERIAL LIST FOR WORKSHOP						1	C14
MARK	SIZE	GRADE	QTY.	LENGTH	AREA	Qty.	In Assembly
bpl18	PL1/4"X6"	A36	1	0'-11 11/16"	149		5
TOTALS						149 in ²	5 lb/ft
				JOB DRAWING No.	bpl18		
				JOB No.	DESCRIPTION	BENT PLATE	
				DRAWN BY	ASM	REVISION No.	0
				DATE DRAWN	03/24/2021	REVISION DATE	06/16/2021



1	C18
Qty.	In Assembly

p25	PL3/8"X6 5/16"	A36	1	0'-11 1/8"	135	6	
MARK	SIZE	GRADE	QTY.	LENGTH	AREA	WEIGHT	
MATERIAL LIST FOR WORKSHOP					TOTALS	135 in ²	6 lb/ft

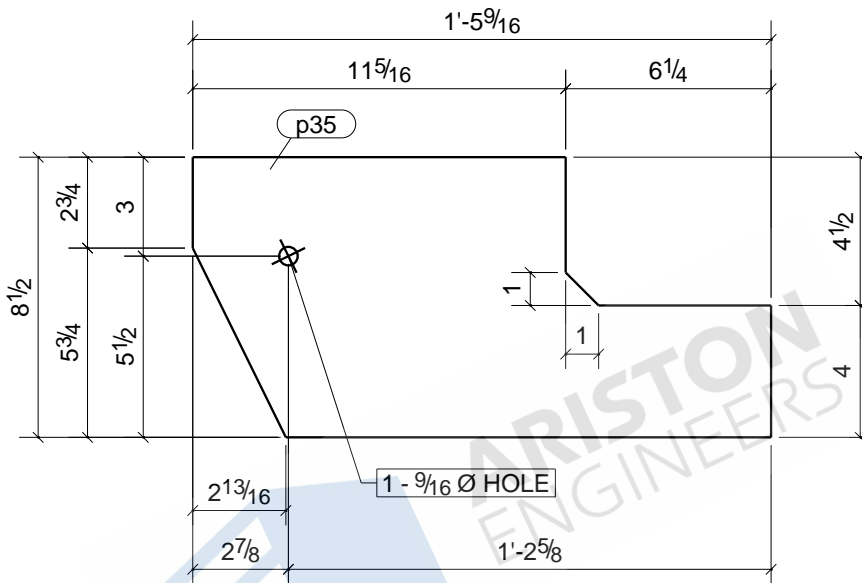
JOB DRAWING No.		p25	
JOB No.		DESCRIPTION	PLATE
DRAWN BY	ASM	REVISION No.	0
DATE DRAWN	03/23/2021	REVISION DATE	06/16/2021



1	B47
Qty.	In Assembly

p30	PL3/8"X7 13/16"	A36	1	2'-0 5/16"	316	16	
MARK	SIZE	GRADE	QTY.	LENGTH	AREA	WEIGHT	
MATERIAL LIST FOR WORKSHOP					TOTALS	316 in ²	16 lb/ft

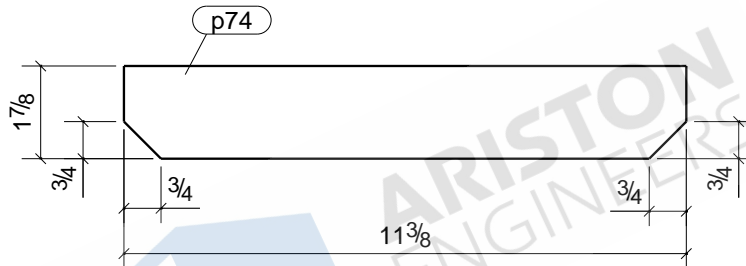
JOB DRAWING No.		p30	
JOB No.		DESCRIPTION	PLATE
DRAWN BY	ASM	REVISION No.	0
DATE DRAWN	03/23/2021	REVISION DATE	06/16/2021



1	VB5
1	VB6
Qty.	In Assembly

p35	PL3/8"X8 1/2"	A36	2	1'-5 9/16"	245	12
MARK	SIZE	GRADE	QTY.	LENGTH	AREA	WEIGHT
MATERIAL LIST FOR WORKSHOP				TOTALS	491 in ²	24 lb/ft

JOB DRAWING No.		p35	
JOB No.		DESCRIPTION	PLATE
DRAWN BY	ASM	REVISION No.	0
DATE DRAWN	04/29/2021	REVISION DATE	06/16/2021



2	B29
2	B31
2	B83
Qty.	In Assembly

p74	PL1/4"X1 7/8"	A36	6	0'-11 3/8"	48	1
MARK	SIZE	GRADE	QTY.	LENGTH	AREA	WEIGHT
MATERIAL LIST FOR WORKSHOP				TOTALS	288 in ²	9 lb/ft

JOB DRAWING No.		p74	
JOB No.		DESCRIPTION	PLATE
DRAWN BY	ASM	REVISION No.	0
DATE DRAWN	03/23/2021	REVISION DATE	06/16/2021