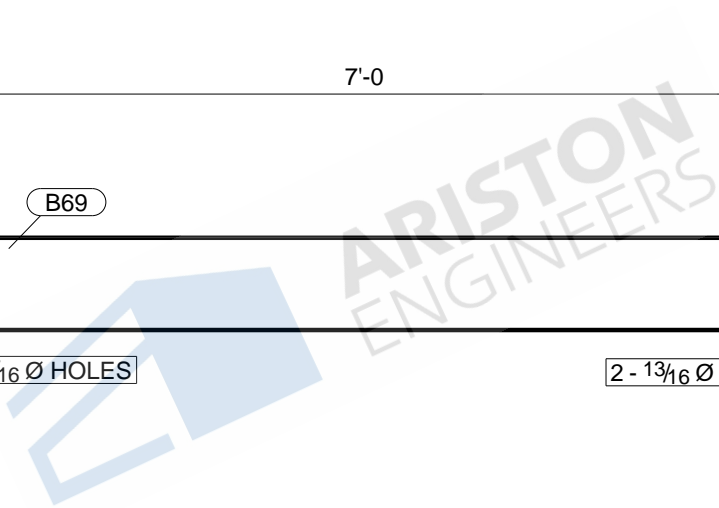
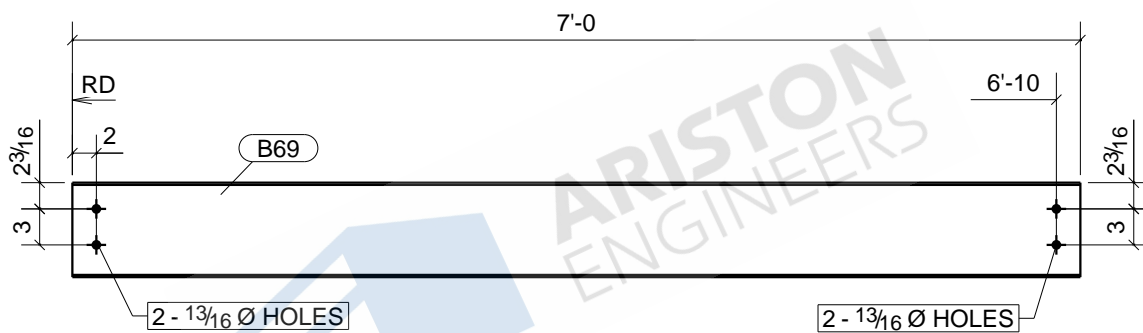


						1	B68
						Qty.	In Assembly
B68	W8X10	A992	1	8'-8 1/2"	3227	88	
MARK	SIZE	GRADE	QTY.	LENGTH	AREA	WEIGHT	
MATERIAL LIST FOR WORKSHOP					TOTALS	3227 in ²	88 lb/ft
				DRAWING No.	B68		
				JOB No.	DESCRIPTION	BEAM	
				DRAWN BY	NSP	REVISION No.	
				DATE DRAWN	REVISION DATE		

Tekla structures

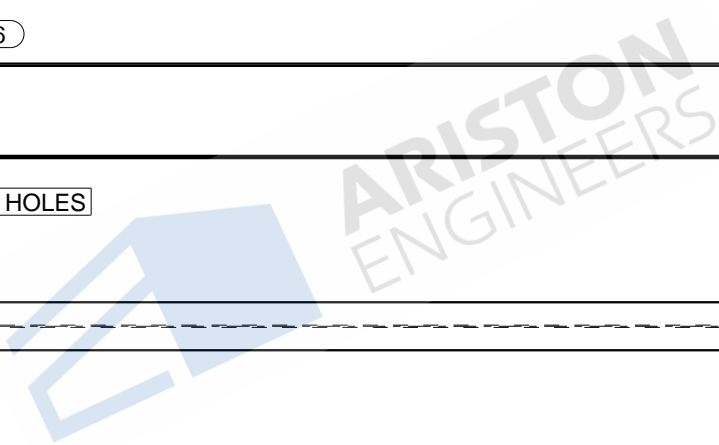
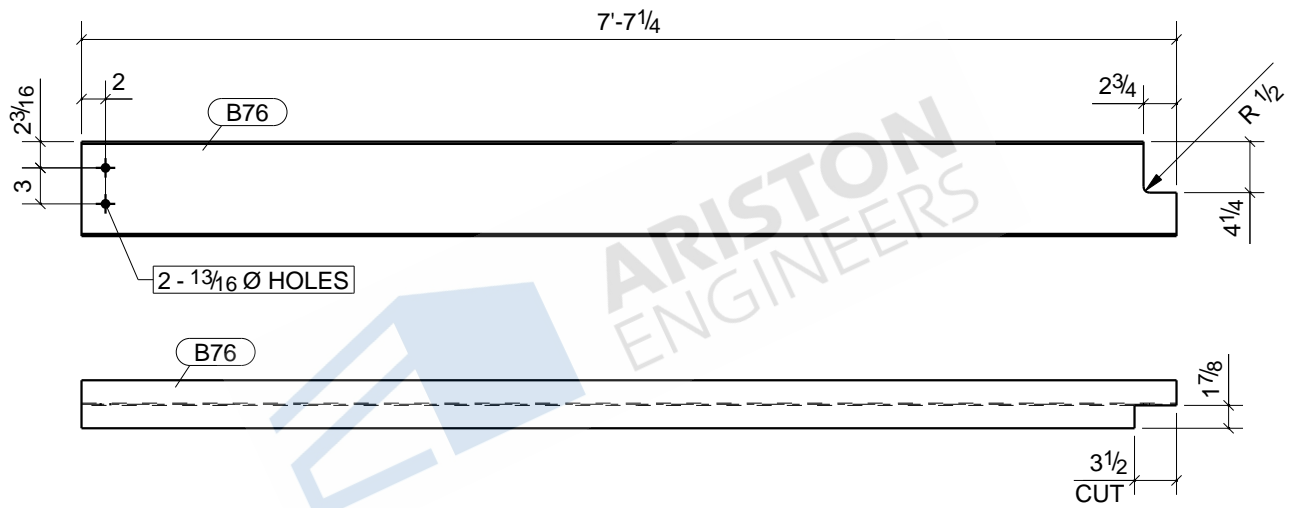


1	B69
Qty.	In Assembly

B69	W8X10	A992	1	7'-0"	2641	71	
MARK	SIZE	GRADE	QTY.	LENGTH	AREA	WEIGHT	
MATERIAL LIST FOR WORKSHOP					TOTALS	2641 in ²	71 lb/ft

DRAWING No.		B69	
JOB No.		DESCRIPTION	BEAM
DRAWN BY	NSP	REVISION No.	
DATE DRAWN		REVISION DATE	

Tekla structures

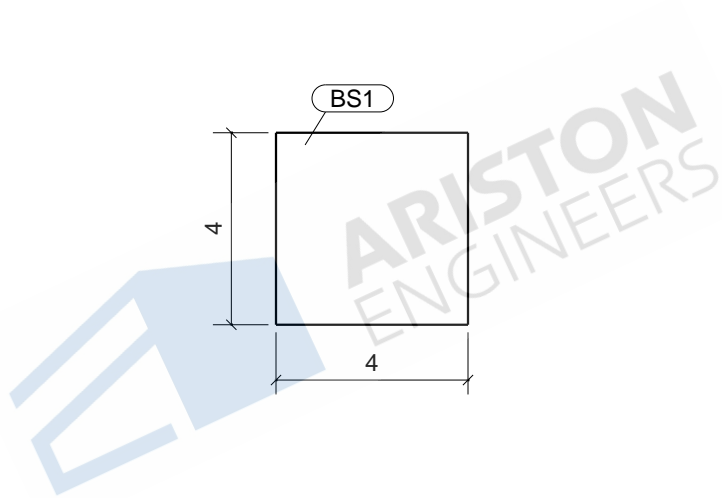


1	B76
Qty.	In Assembly
77	77
2811	77 lb/ft

B76	W8X10	A992	1	7'-7 1/4"	2811	77	
MARK	SIZE	GRADE	QTY.	LENGTH	AREA	WEIGHT	
MATERIAL LIST FOR WORKSHOP					TOTALS	2811 in ²	77 lb/ft

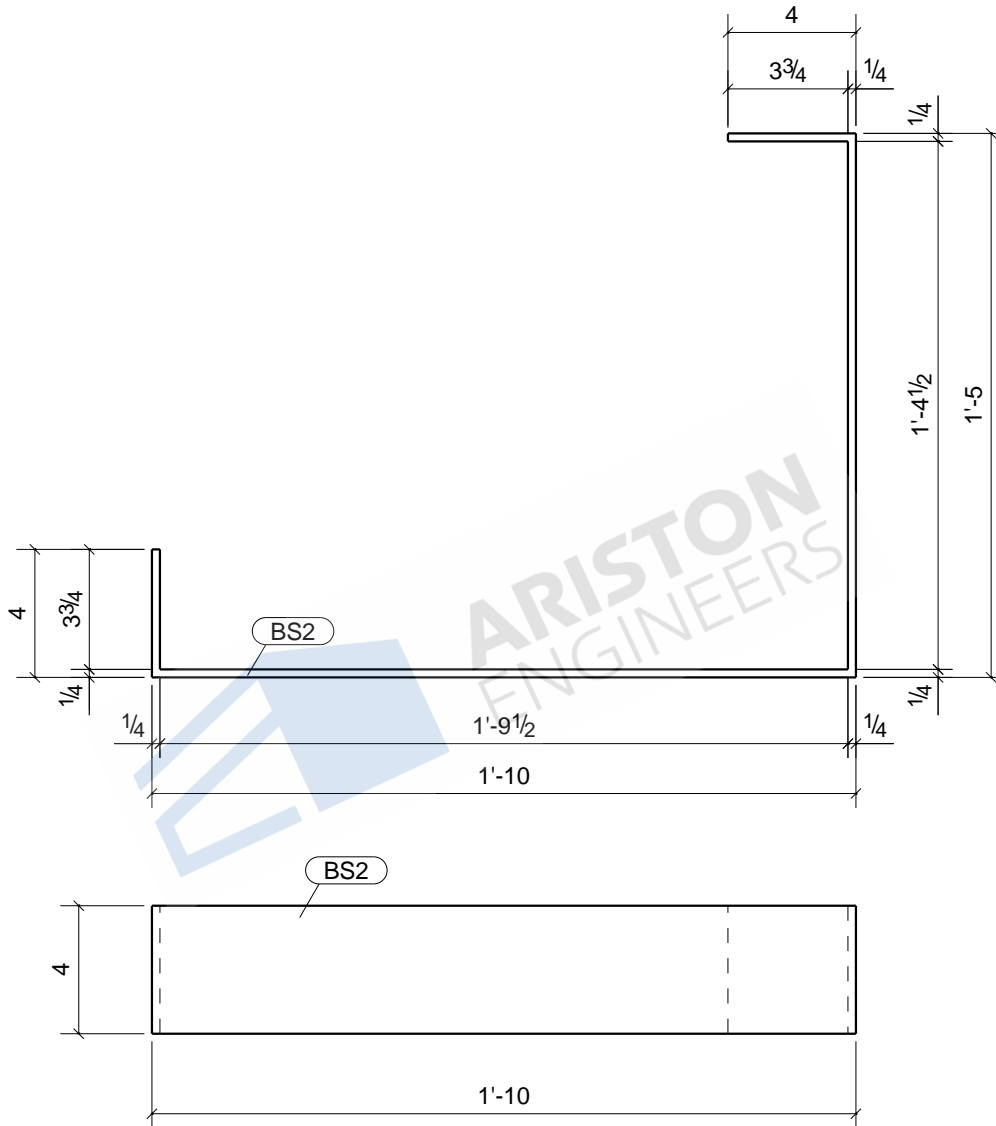
DRAWING No.		B76	
JOB No.		DESCRIPTION	BEAM
DRAWN BY	NSP	REVISION No.	
DATE DRAWN		REVISION DATE	

Tekla structures



Tekla structures

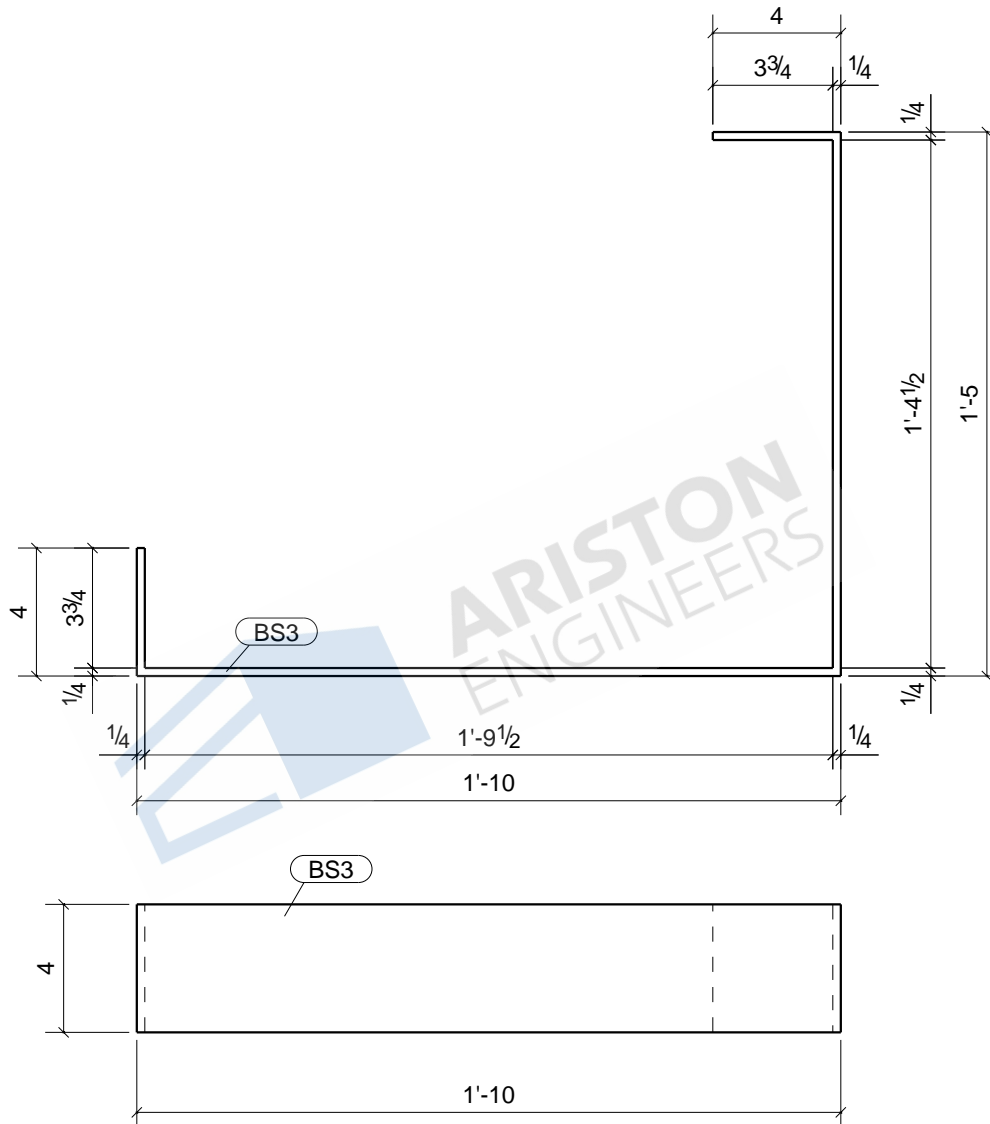
						1	BS1
						Qty.	In Assembly
BS1	FB1/4"X4"	A36	1	3'-9 1/2"	395	13	
MARK	SIZE	GRADE	QTY.	LENGTH	AREA	WEIGHT	
MATERIAL LIST FOR WORKSHOP					TOTALS	395 in ²	13 lb/ft
			DRAWING No.		BS1		
			JOB No.		DESCRIPTION		BENCH SUPPO
			DRAWN BY		REVISION No.		
			DATE DRAWN		REVISION DATE		



ARISTON ENGINEERS

						2	BS2
						Qty.	In Assembly
BS2	FB1/4"X4"	A36	2	3'-9 1/2"	395	13	
MARK	SIZE	GRADE	QTY.	LENGTH	AREA	WEIGHT	
MATERIAL LIST FOR WORKSHOP					TOTALS	790 in ²	26 lb/ft
				DRAWING No.	BS2		
				JOB No.		DESCRIPTION	BENCH SUPPO
				DRAWN BY	NSP	REVISION No.	
				DATE DRAWN		REVISION DATE	

Tekla structures



ARISTON ENGINEERS

						4	BS3
						Qty.	In Assembly
BS3	FB1/4"X4"	A36	4	3'-9 1/2"	395	13	
MARK	SIZE	GRADE	QTY.	LENGTH	AREA	WEIGHT	
MATERIAL LIST FOR WORKSHOP					TOTALS	1580 in ²	52 lb/ft

DRAWING No.

BS3

JOB No.

DRAWN BY

DATE DRAWN

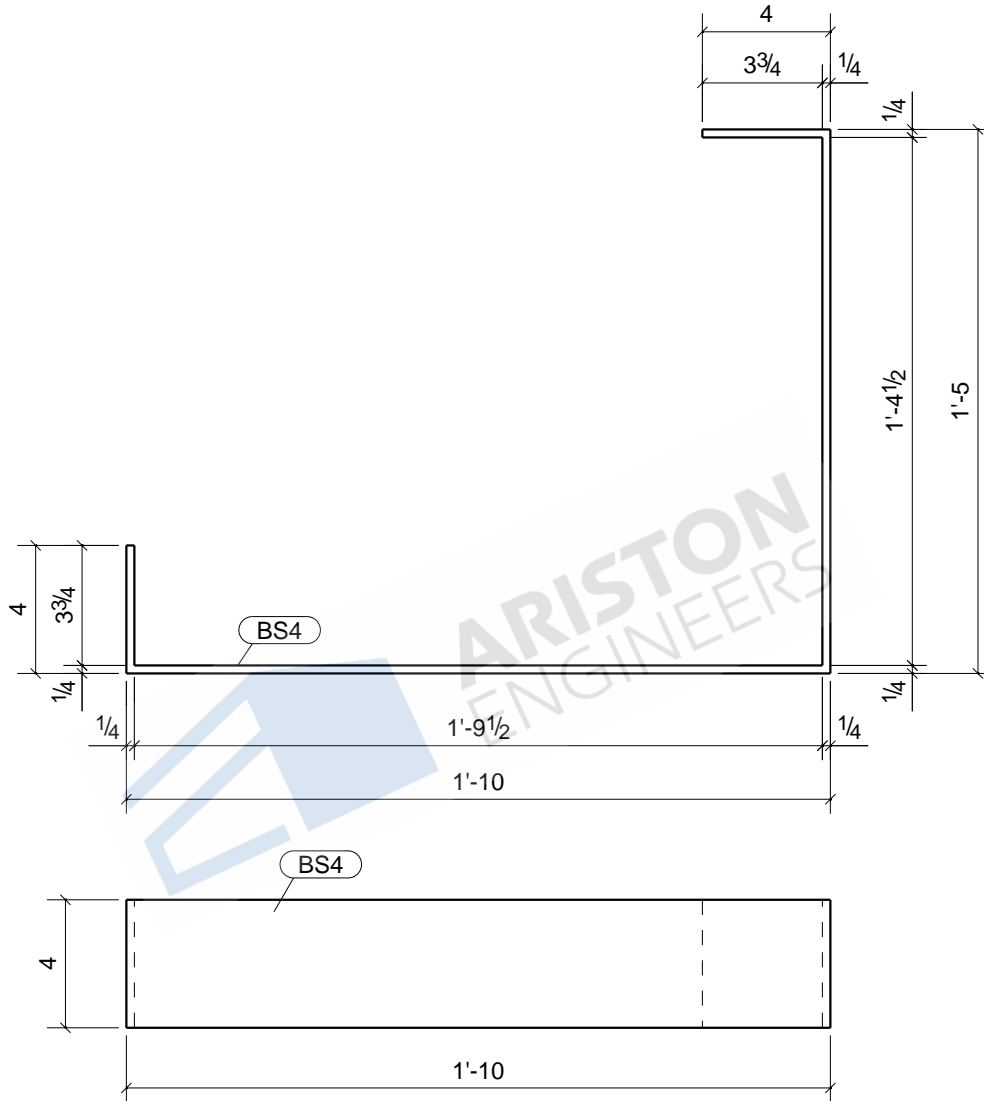
NSP

DESCRIPTION

REVISION No.

REVISION DATE

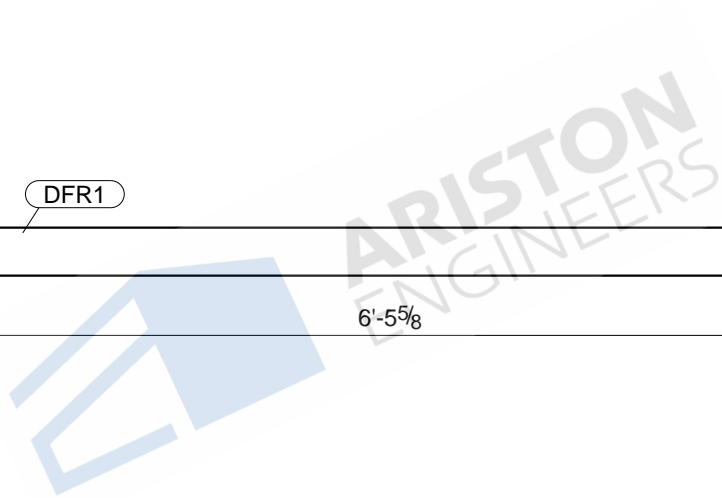
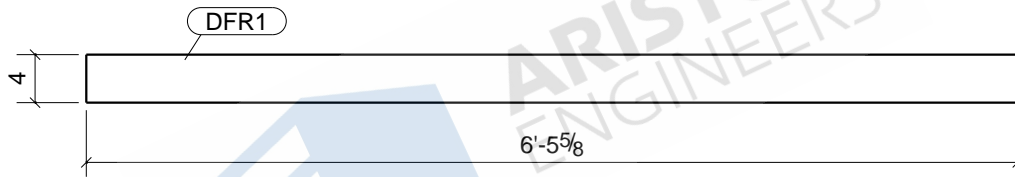
BENCH SUPPO



ARISTON ENGINEERS

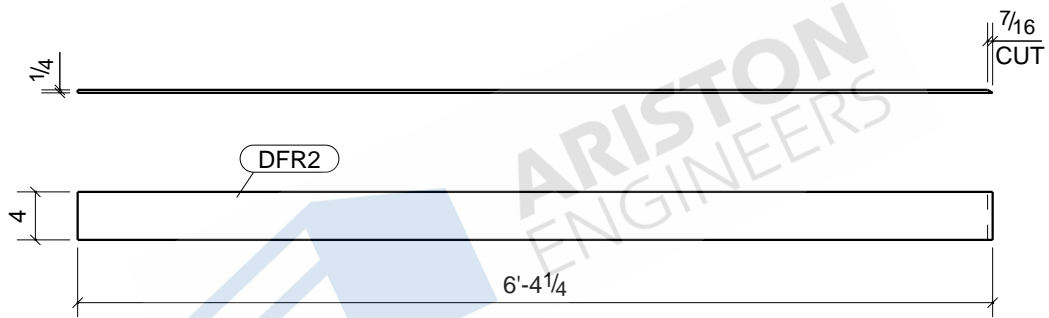
						1	BS4
						Qty.	In Assembly
BS4	FB1/4"X4"	A36	1	3'-9 1/2"	395	13	
MARK	SIZE	GRADE	QTY.	LENGTH	AREA	WEIGHT	
MATERIAL LIST FOR WORKSHOP					TOTALS	395 in ²	13 lb/ft
				DRAWING No.	BS4		
				JOB No.		DESCRIPTION	BENCH SUPPO
				DRAWN BY	NSP	REVISION No.	
				DATE DRAWN		REVISION DATE	

Tekla structures



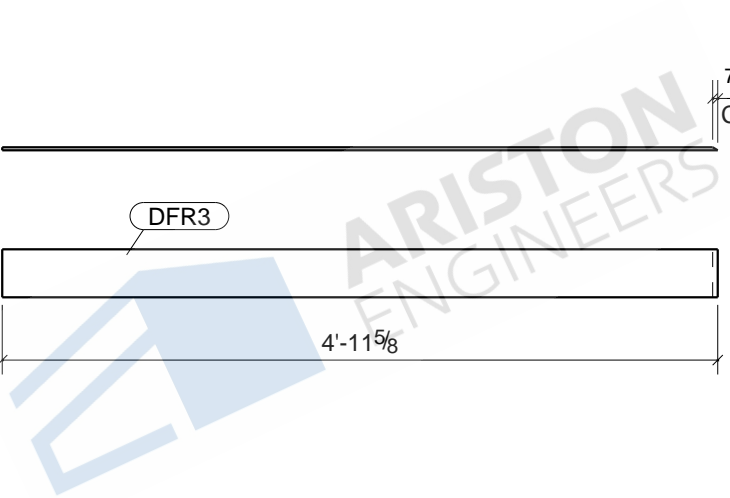
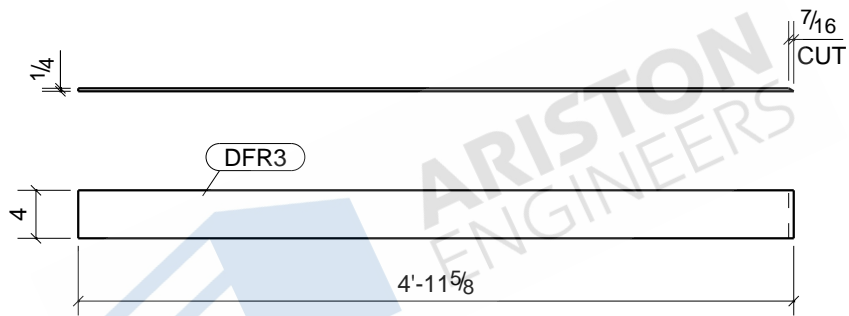
						2	DFR1
						Qty.	In Assembly
DFR1	FB1/4"X4"	A36	2	6'-5 5/8"	662	22	
MARK	SIZE	GRADE	QTY.	LENGTH	AREA	WEIGHT	
MATERIAL LIST FOR WORKSHOP					TOTALS	1324 in ²	44 lb/ft
			DRAWING No.		DFR1		
			JOB No.		DESCRIPTION		
			DRAWN BY		REVISION No.		
			DATE DRAWN		REVISION DATE		
			NSP				

Tekla structures



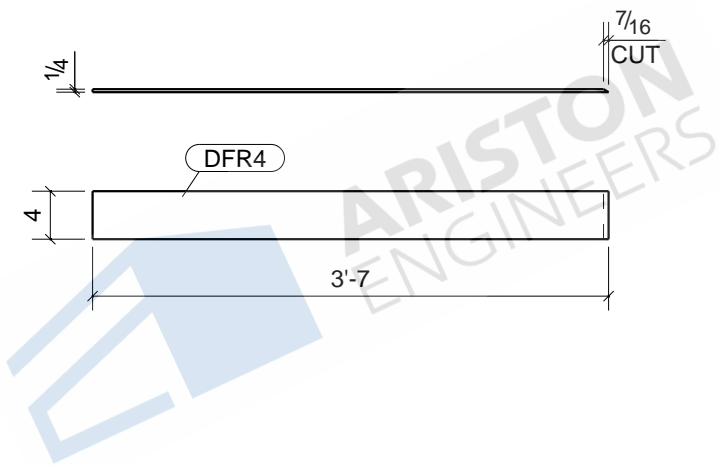
						1	DFR2
						Qty.	In Assembly
DFR2	FB1/4"X4"	A36	1	6'-4 1/4"	649	22	
MARK	SIZE	GRADE	QTY.	LENGTH	AREA	WEIGHT	
MATERIAL LIST FOR WORKSHOP					TOTALS	649 in ²	22 lb/ft
			DRAWING No.		DFR2		
			JOB No.		DESCRIPTION		
			DRAWN BY		REVISION No.		
			DATE DRAWN		REVISION DATE		
			NSP				

Tekla structures



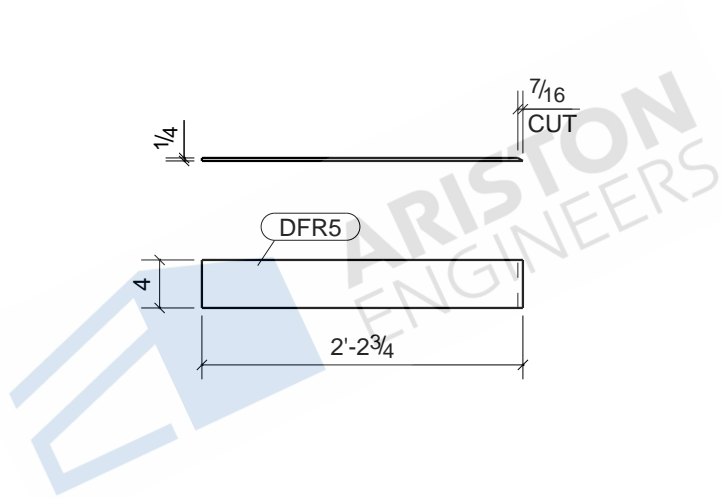
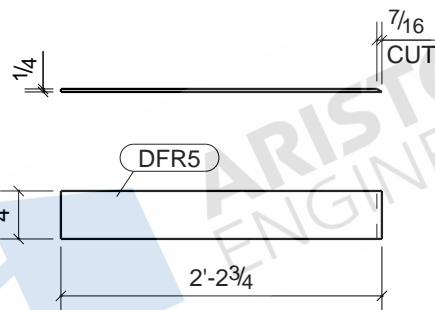
						1	DFR3
						Qty.	In Assembly
DFR3	FB1/4"X4"	A36	1	4'-11 5/8"	508	17	
MARK	SIZE	GRADE	QTY.	LENGTH	AREA	WEIGHT	
MATERIAL LIST FOR WORKSHOP					TOTALS	508 in ²	17 lb/ft
			DRAWING No.		DFR3		
			JOB No.		DESCRIPTION		
			DRAWN BY		REVISION No.		
			DATE DRAWN		REVISION DATE		
			NSP				

Tekla structures



Tekla structures

						1	DFR4
						Qty.	In Assembly
DFR4	FB1/4"X4"	A36	1	3'-7"	367	12	
MARK	SIZE	GRADE	QTY.	LENGTH	AREA	WEIGHT	
MATERIAL LIST FOR WORKSHOP					TOTALS	367 in ²	12 lb/ft
			DRAWING No.		DFR4		
			JOB No.		DESCRIPTION	DISPLAY FRA	
			DRAWN BY		NSP	REVISION No.	
			DATE DRAWN			REVISION DATE	

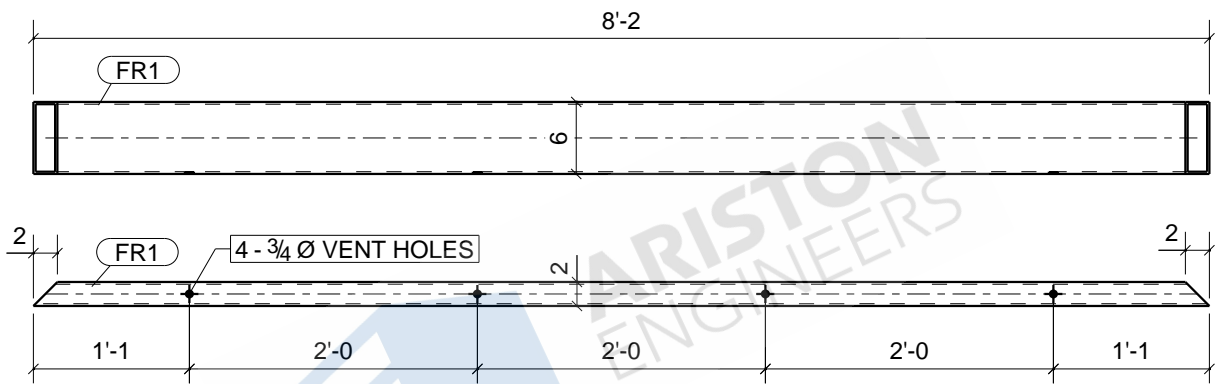


1	DFR5
Qty.	In Assembly
229	8
229 in ²	8 lb/ft

DFR5	FB1/4"X4"	A36	1	2'-2 3/4"	229	8
MARK	SIZE	GRADE	QTY.	LENGTH	AREA	WEIGHT
MATERIAL LIST FOR WORKSHOP					TOTALS	

		DRAWING No. DFR5	
		JOB No.	DESCRIPTION
		DRAWN BY	REVISION No.
		DATE DRAWN	REVISION DATE

Tekla structures

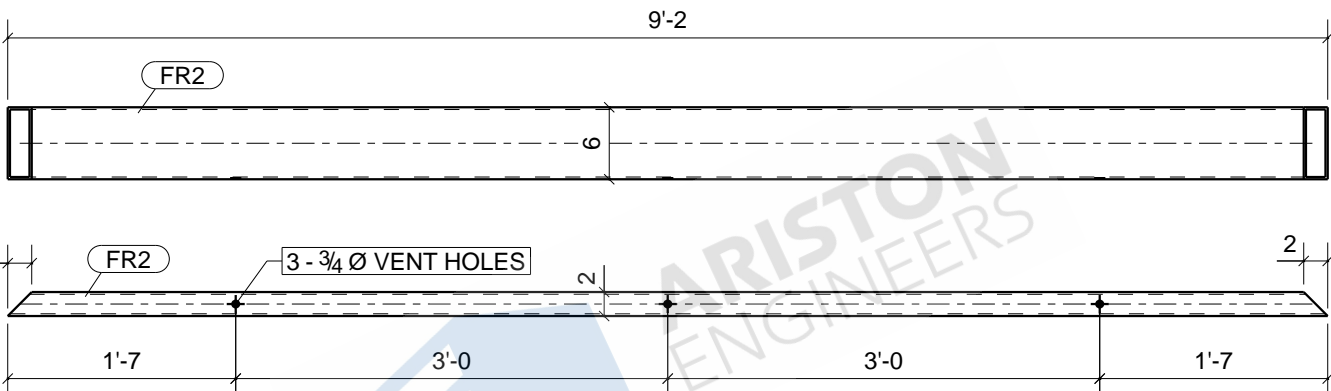


1	FR1
Qty.	In Assembly

FR1	HSS6X2X3/16	A500-GR.B	1	8'-2"	1505	72	
MARK	SIZE	GRADE	QTY.	LENGTH	AREA	WEIGHT	
MATERIAL LIST FOR WORKSHOP					TOTALS	1505 in ²	72 lb/ft

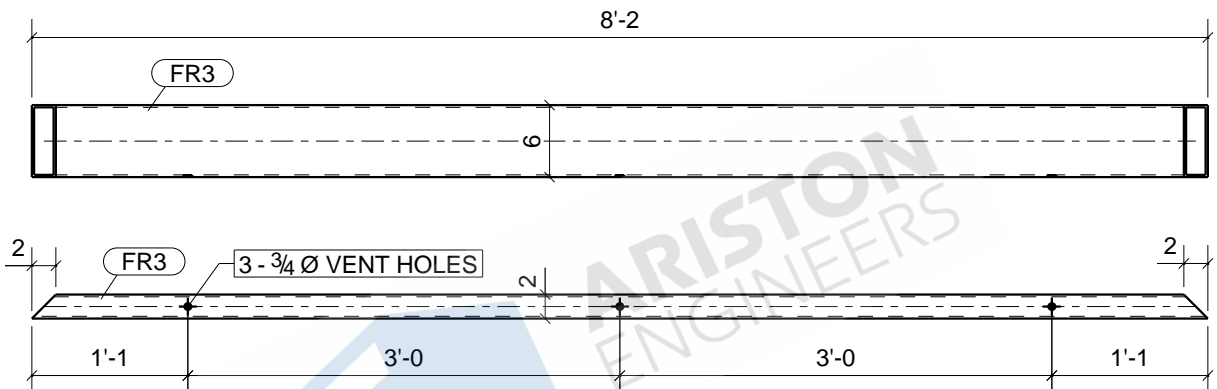
DRAWING No. **FR1**

JOB No.		DESCRIPTION	FRAME
DRAWN BY	NSP	REVISION No.	
DATE DRAWN		REVISION DATE	



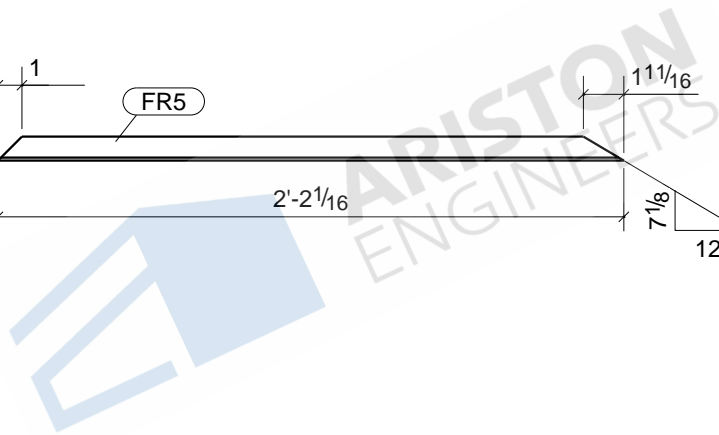
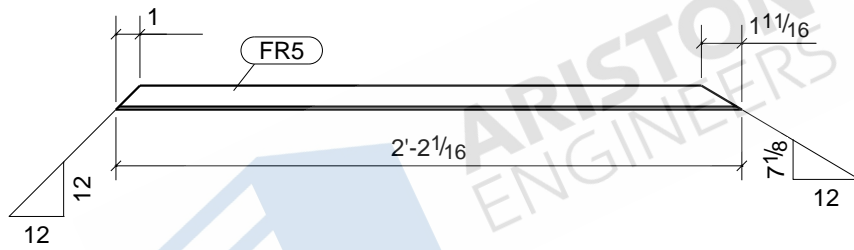
						1	FR2
						Qty.	In Assembly
FR2	HSS6X2X3/16	A500-GR.B	1	9'-2"	1690	80	
MARK	SIZE	GRADE	QTY.	LENGTH	AREA	WEIGHT	
MATERIAL LIST FOR WORKSHOP					TOTALS	1690 in ²	80 lb/ft
			DRAWING No.		FR2		
			JOB No.	DESCRIPTION		FRAME	
			DRAWN BY	NSP	REVISION No.		
			DATE DRAWN	REVISION DATE			

Tekla structures



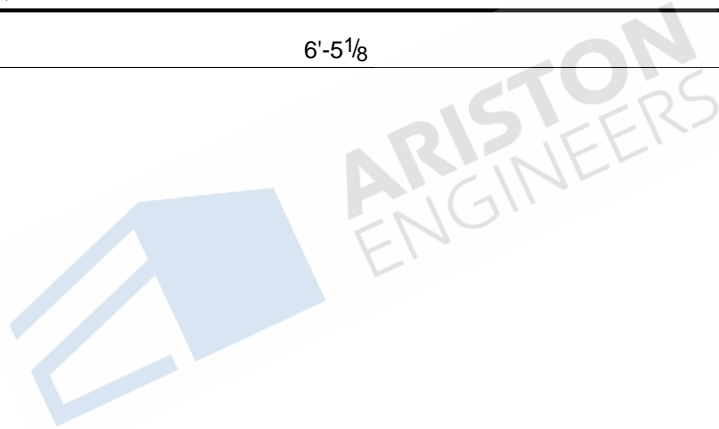
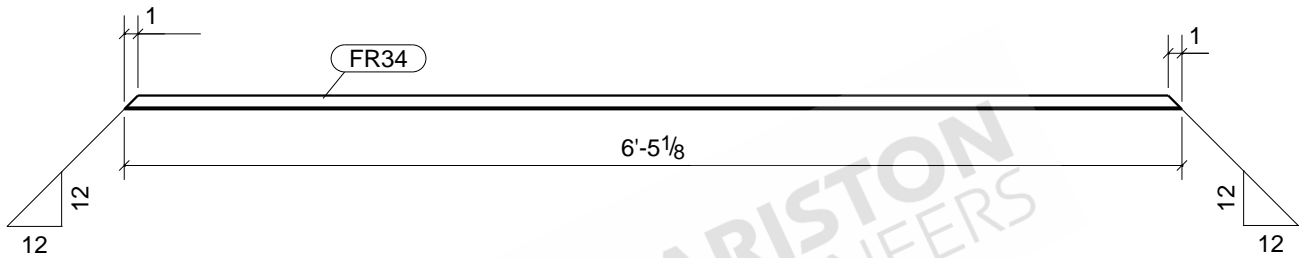
						1	FR3
						Qty.	In Assembly
FR3	HSS6X2X3/16	A500-GR.B	1	8'-2"	1505	72	
MARK	SIZE	GRADE	QTY.	LENGTH	AREA	WEIGHT	
MATERIAL LIST FOR WORKSHOP					TOTALS	1505 in ²	72 lb/ft
			DRAWING No.		FR3		
			JOB No.		DESCRIPTION		
			DRAWN BY		REVISION No.		
			DATE DRAWN		REVISION DATE		
			NSP				

Tekla structures



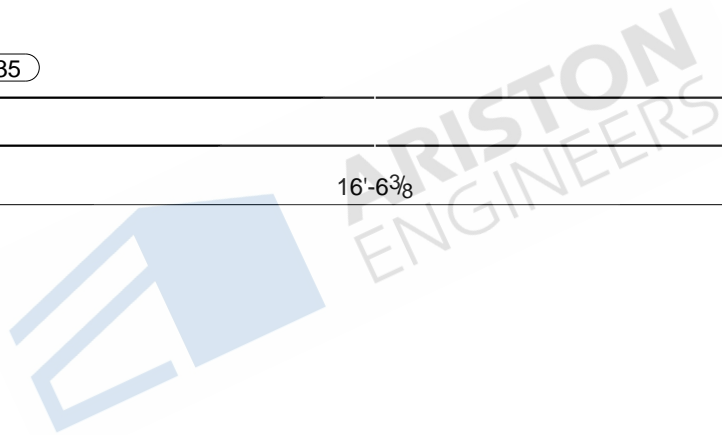
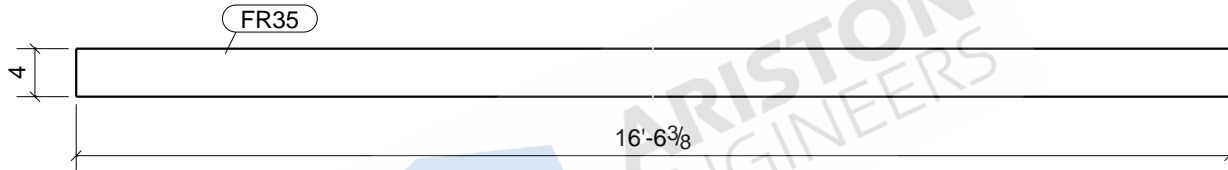
						1	FR5	
						Qty.	In Assembly	
FR5	L1X1X1/8	A36	1	2'-2 1/16"	102	2		
MARK	SIZE	GRADE	QTY.	LENGTH	AREA	WEIGHT		
MATERIAL LIST FOR WORKSHOP					TOTALS	102 in ²	2 lb/ft	
			DRAWING No.		FR5			
			JOB No.		DESCRIPTION		FRAME	
			DRAWN BY		NSP	REVISION No.		
			DATE DRAWN			REVISION DATE		

Tekla structures



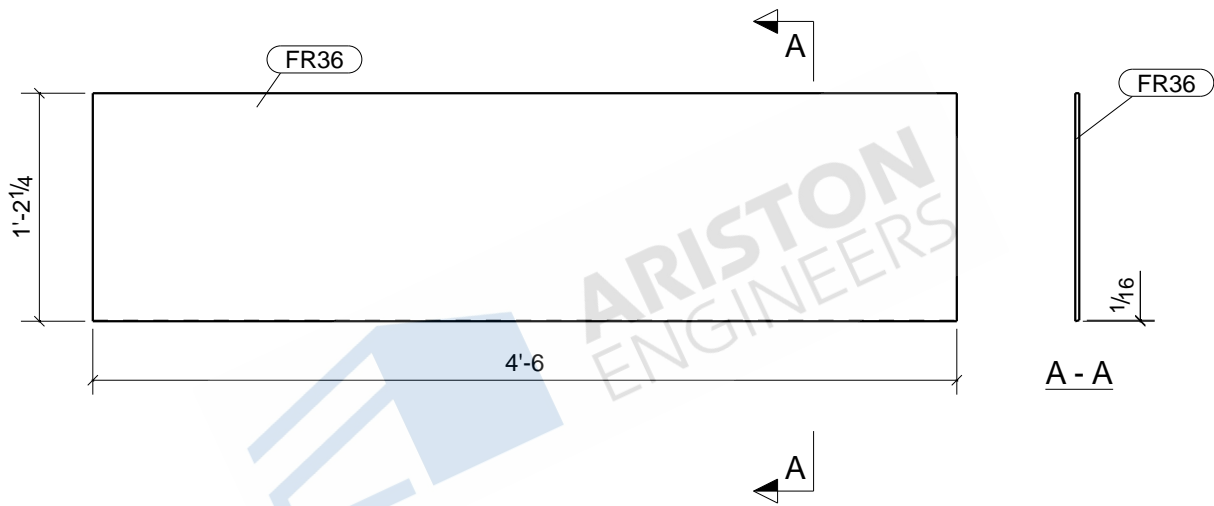
						1	FR34
						Qty.	In Assembly
FR34	L1X1X1/8	A36	1	6'-5 1/8"	307	5	
MARK	SIZE	GRADE	QTY.	LENGTH	AREA	WEIGHT	
MATERIAL LIST FOR WORKSHOP					TOTALS	307 in ²	5 lb/ft
			DRAWING No.		FR34		
			JOB No.		DESCRIPTION	FRAME	
			DRAWN BY		NSP	REVISION No.	
			DATE DRAWN			REVISION DATE	

Tekla structures



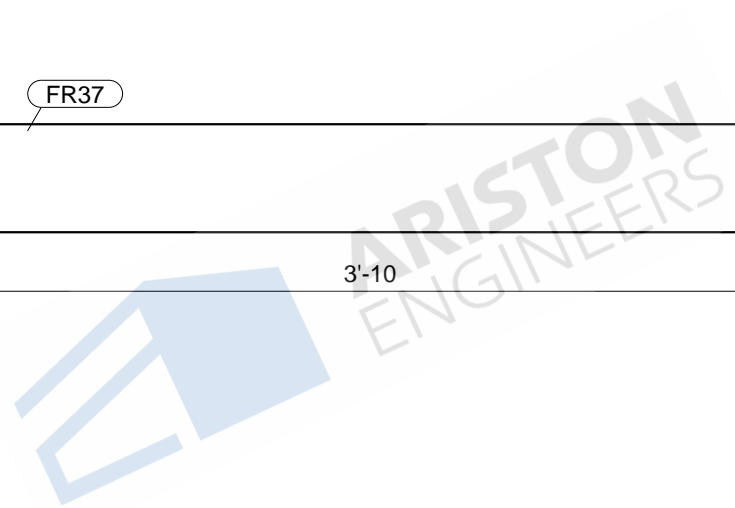
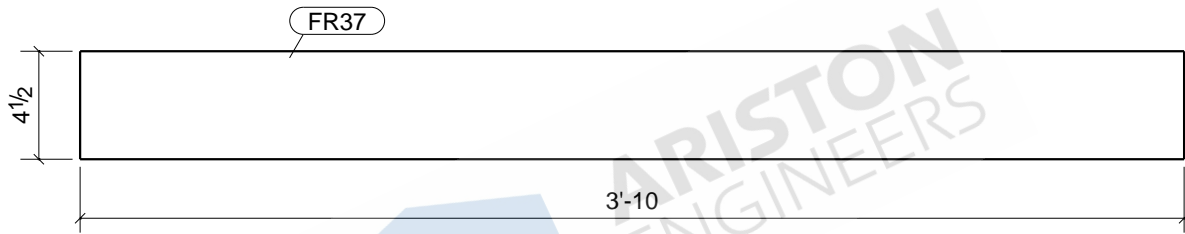
						2	FR35
						Qty.	In Assembly
FR35	FB1/4"X4"	A36	2	16'-6 3/8"	1688	56	
MARK	SIZE	GRADE	QTY.	LENGTH	AREA	WEIGHT	
MATERIAL LIST FOR WORKSHOP					TOTALS	3376 in ²	113 lb/ft
				DRAWING No.	FR35		
				JOB No.		DESCRIPTION	FRAME
				DRAWN BY	NSP	REVISION No.	
				DATE DRAWN		REVISION DATE	

Tekla structures



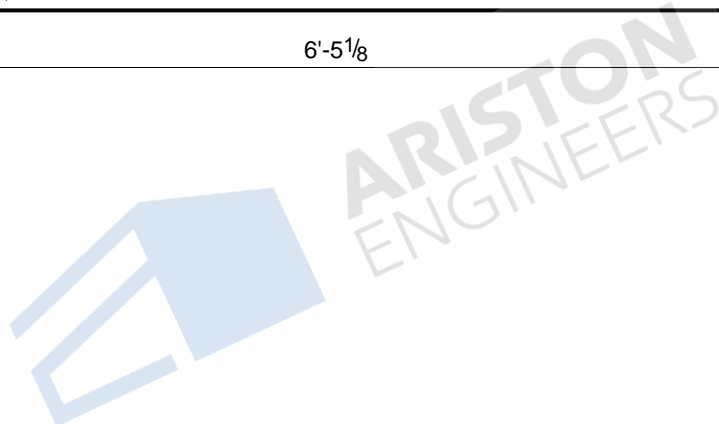
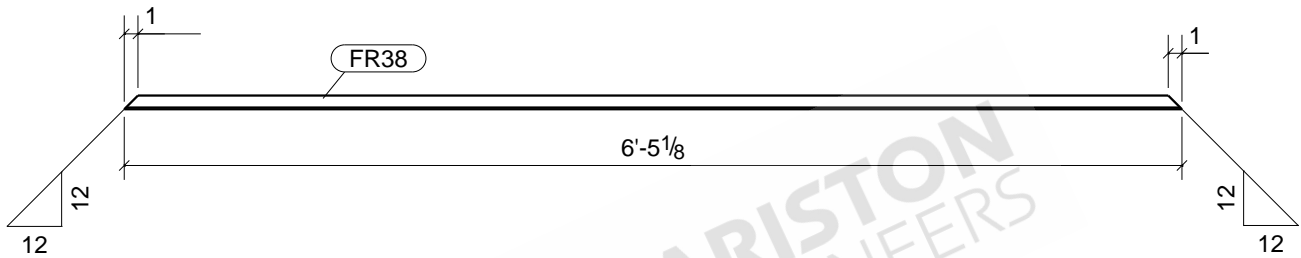
Tekla structures

						1	FR36
						Qty.	In Assembly
FR36	PL1/4"X14 1/4"	A36	1	4'-6"	1570	54	
MARK	SIZE	GRADE	QTY.	LENGTH	AREA	WEIGHT	
MATERIAL LIST FOR WORKSHOP					TOTALS	1570 in ²	54 lb/ft
			DRAWING No.		FR36		
			JOB No.		DESCRIPTION	FRAME	
			DRAWN BY	NSP	REVISION No.		
			DATE DRAWN		REVISION DATE		



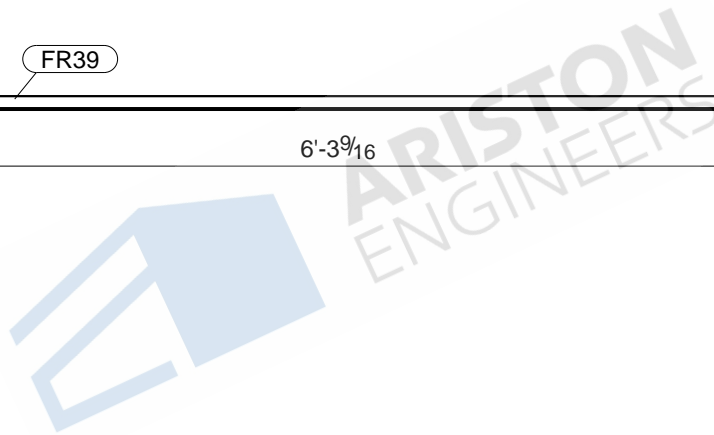
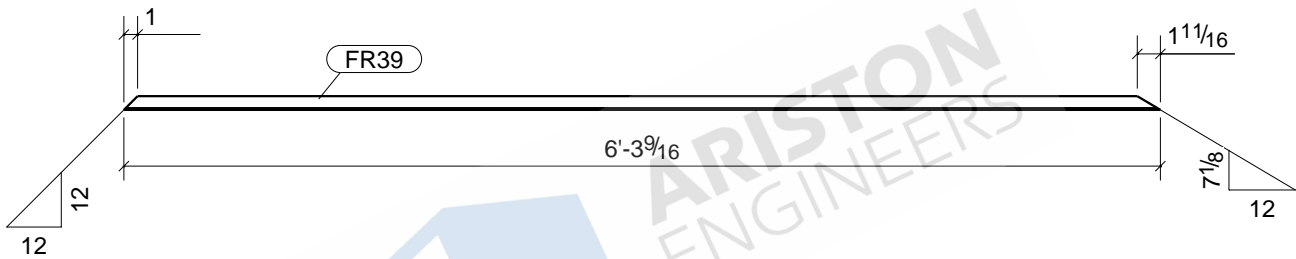
						1	FR37
						Qty.	In Assembly
FR37	FB1/4"X4 1/2"	A36	1	3'-10"	439	15	
MARK	SIZE	GRADE	QTY.	LENGTH	AREA	WEIGHT	
MATERIAL LIST FOR WORKSHOP					TOTALS	439 in ²	15 lb/ft
				DRAWING No.	FR37		
				JOB No.		DESCRIPTION	FRAME
				DRAWN BY	NSP	REVISION No.	
				DATE DRAWN		REVISION DATE	

Tekla structures

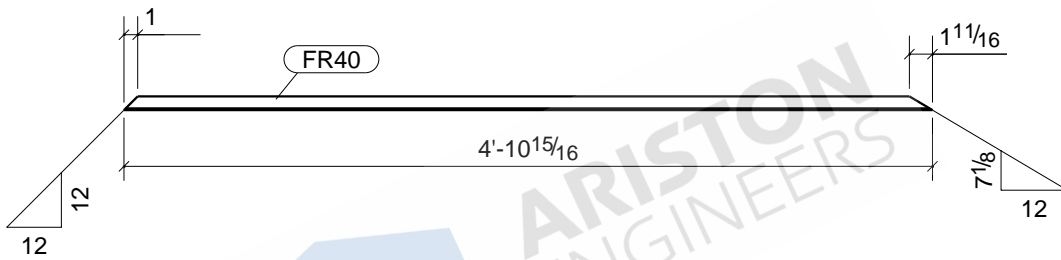


						1	FR38
						Qty.	In Assembly
FR38	L1X1X1/8	A36	1	6'-5 1/8"	307	5	
MARK	SIZE	GRADE	QTY.	LENGTH	AREA	WEIGHT	
MATERIAL LIST FOR WORKSHOP					TOTALS	307 in ²	5 lb/ft
			DRAWING No.		FR38		
			JOB No.		DESCRIPTION	FRAME	
			DRAWN BY		NSP	REVISION No.	
			DATE DRAWN			REVISION DATE	

Tekla structures



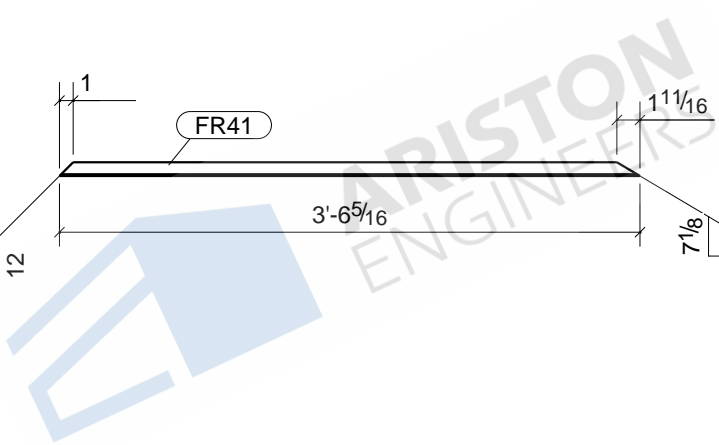
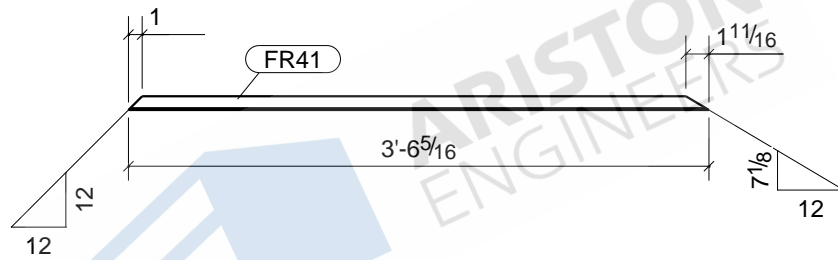
						1	FR39	
						Qty.	In Assembly	
FR39	L1X1X1/8	A36	1	6'-3 9/16"	300	5		
MARK	SIZE	GRADE	QTY.	LENGTH	AREA	WEIGHT		
MATERIAL LIST FOR WORKSHOP					TOTALS	300 in ²	5 lb/ft	
Tekla structures			DRAWING No.		FR39			
			JOB No.		DESCRIPTION		FRAME	
			DRAWN BY		NSP	REVISION No.		
			DATE DRAWN			REVISION DATE		



ARISTON ENGINEERS

						1	FR40	
						Qty.	In Assembly	
FR40	L1X1X1/8	A36	1	4'-10 15/16"	233	4		
MARK	SIZE	GRADE	QTY.	LENGTH	AREA	WEIGHT		
MATERIAL LIST FOR WORKSHOP					TOTALS	233 in ²	4 lb/ft	
			DRAWING No.		FR40			
			JOB No.		DESCRIPTION		FRAME	
			DRAWN BY		NSP	REVISION No.		
			DATE DRAWN			REVISION DATE		

Tekla structures

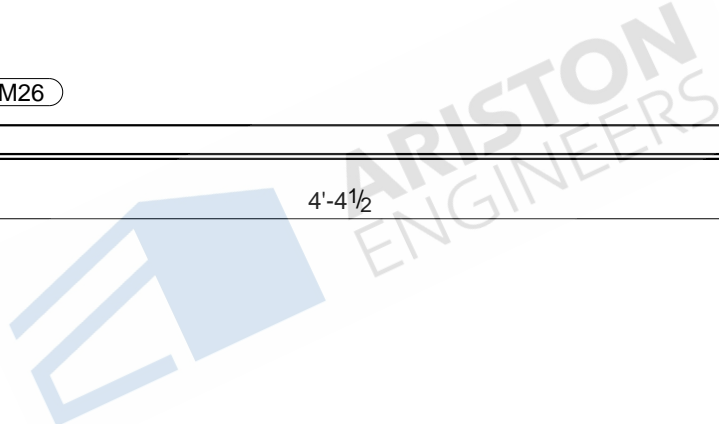
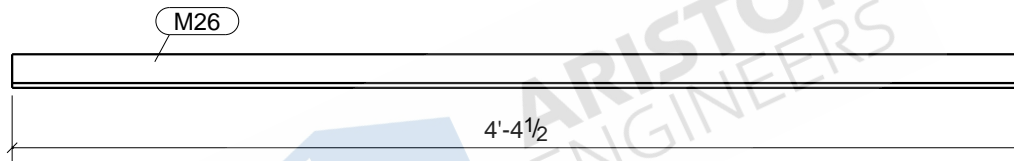


1	FR41
Qty.	In Assembly
	3

FR41	L1X1X1/8	A36	1	3'-6 5/16"	167	3	
MARK	SIZE	GRADE	QTY.	LENGTH	AREA	WEIGHT	
MATERIAL LIST FOR WORKSHOP					TOTALS	167 in ²	3 lb/ft

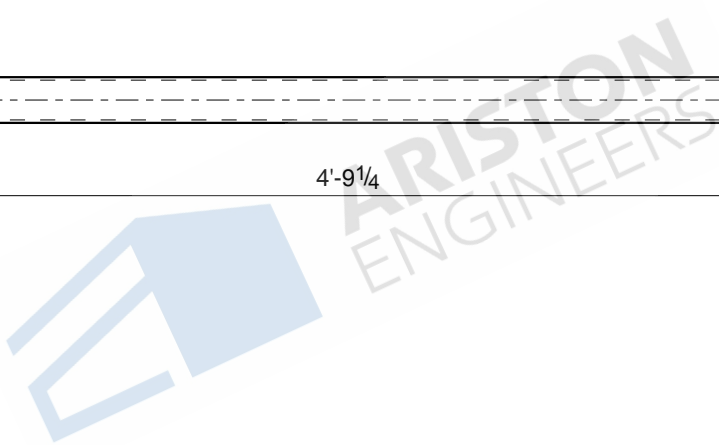
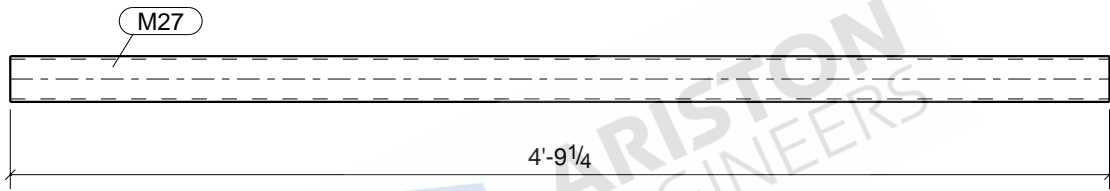
	DRAWING No.		FR41		
	JOB No.		DESCRIPTION	FRAME	
	DRAWN BY	NSP	REVISION No.		
	DATE DRAWN		REVISION DATE		

Tekla structures



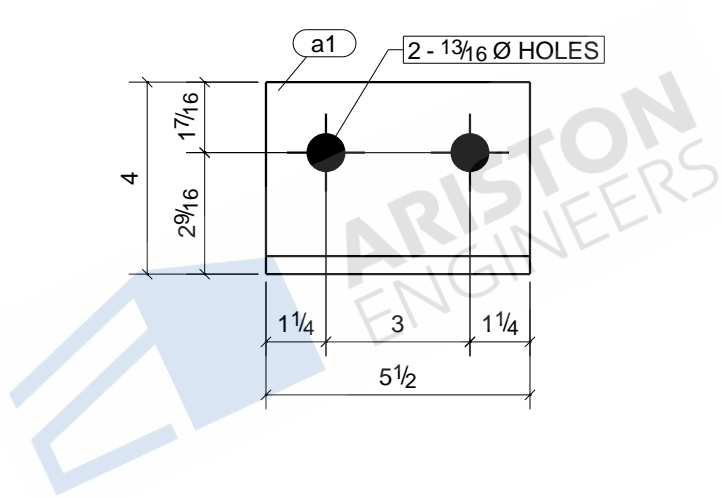
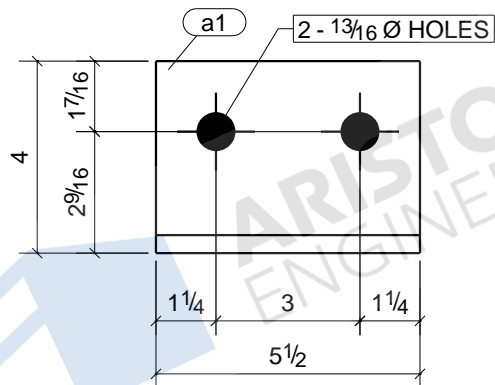
						20	M26
						Qty.	In Assembly
M26	L1-3/4X1-3/4X1/4	A36	20	4'-4 1/2"	369	12	
MARK	SIZE	GRADE	QTY.	LENGTH	AREA	WEIGHT	
MATERIAL LIST FOR WORKSHOP					TOTALS	7383 in ²	242 lb/ft
			DRAWING No.	M26			
			JOB No.	DESCRIPTION	PLATE		
			DRAWN BY	NSP	REVISION No.		
			DATE DRAWN	REVISION DATE			

Tekla structures



						12	M27
						Qty.	In Assembly
M27	PIPE2STD	A53	12	4'-9 1/4"	428	17	
MARK	SIZE	GRADE	QTY.	LENGTH	AREA	WEIGHT	
MATERIAL LIST FOR WORKSHOP					TOTALS	5136 in ²	199 lb/ft
			DRAWING No.		M27		
			JOB No.		DESCRIPTION	PLATE	
			DRAWN BY	NSP	REVISION No.		
			DATE DRAWN		REVISION DATE		

Tekla structures

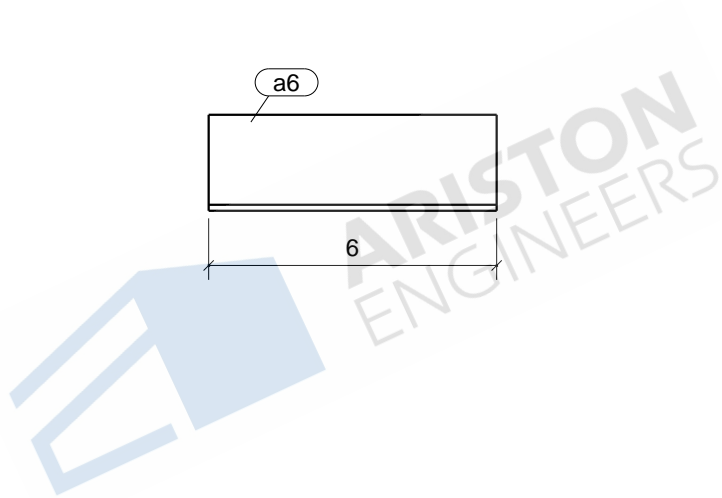


4	B12
Qty.	In Assembly

a1	L4X3-1/2X3/8	A36	4	0'-5 1/2"	88	4	
MARK	SIZE	GRADE	QTY.	LENGTH	AREA	WEIGHT	
MATERIAL LIST FOR WORKSHOP					TOTALS	351 in ²	17 lb/ft

DRAWING No. **a1**

JOB No.		DESCRIPTION	ANGLE
DRAWN BY	NSP	REVISION No.	
DATE DRAWN		REVISION DATE	

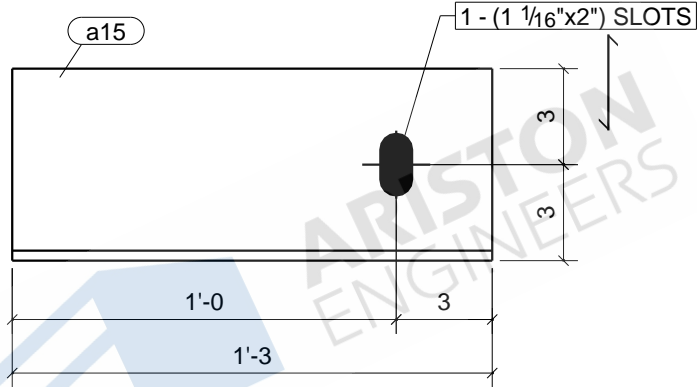


20	ST1
20	ST2
10	ST3
10	ST4
19	ST5
19	ST6
38	ST7
20	ST10
Qty.	In Assembly

a6	L2X2X1/8	A36	156	0'-6"	49	1	
MARK	SIZE	GRADE	QTY.	LENGTH	AREA	WEIGHT	
MATERIAL LIST FOR WORKSHOP					TOTALS	7639 in ²	130 lb/ft

	DRAWING No. a6			
	JOB No.		DESCRIPTION	ANGLE
	DRAWN BY	NSP	REVISION No.	
	DATE DRAWN		REVISION DATE	

Tekla structures

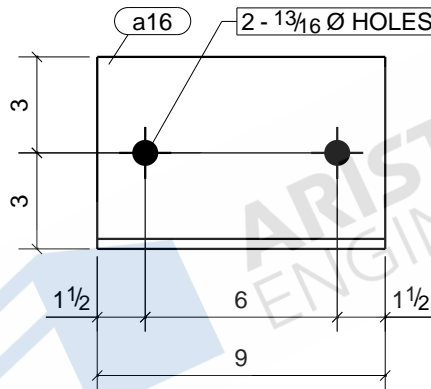


2	B10
2	B43
1	B77
Qty.	In Assembly

a15	L6X6X5/16	A36	5	1'-3"	367	16	
MARK	SIZE	GRADE	QTY.	LENGTH	AREA	WEIGHT	
MATERIAL LIST FOR WORKSHOP					TOTALS	1837 in ²	78 lb/ft

DRAWING No. **a15**

JOB No.		DESCRIPTION	ANGLE
DRAWN BY	NSP	REVISION No.	
DATE DRAWN		REVISION DATE	

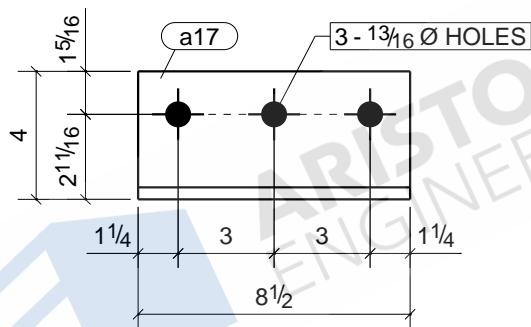


2	ST1
1	ST2
1	ST3
1	ST4
1	ST10
Qty.	In Assembly

a16	L6X6X5/16	A36	6	0'-9"	223	9	
MARK	SIZE	GRADE	QTY.	LENGTH	AREA	WEIGHT	
MATERIAL LIST FOR WORKSHOP					TOTALS	1340 in ²	56 lb/ft

DRAWING No. **a16**

JOB No.		DESCRIPTION	ANGLE
DRAWN BY	NSP	REVISION No.	
DATE DRAWN		REVISION DATE	

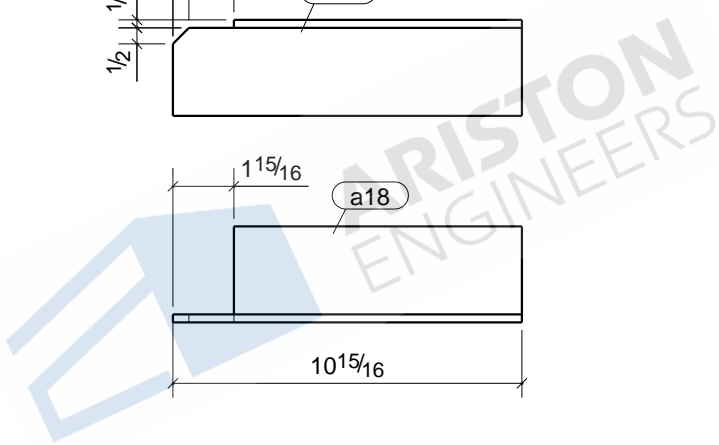
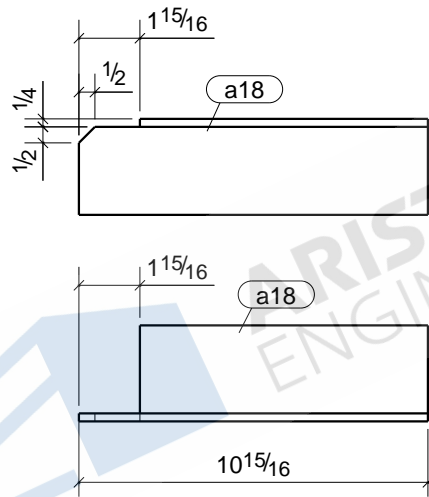


4	B81
1	B82
1	B93
20	B100
Qty.	In Assembly

a17	L4X3-1/2X3/8	A36	26	0'-8 1/2"	133	6	
MARK	SIZE	GRADE	QTY.	LENGTH	AREA	WEIGHT	
MATERIAL LIST FOR WORKSHOP					TOTALS	3454 in ²	168 lb/ft

DRAWING No. **a17**

JOB No.		DESCRIPTION	ANGLE
DRAWN BY	NSP	REVISION No.	
DATE DRAWN		REVISION DATE	



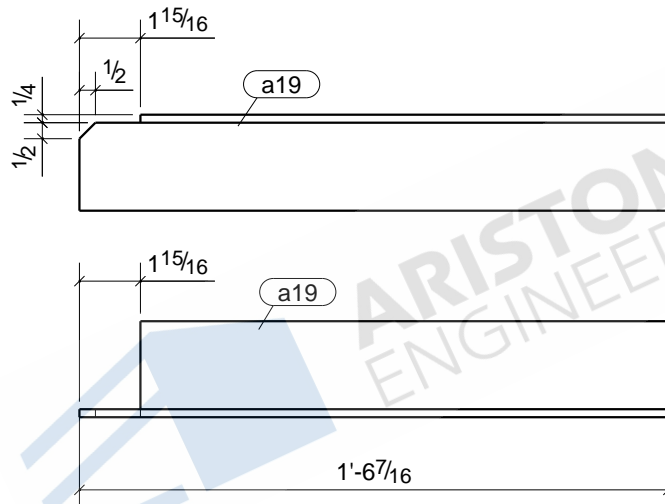
12	B59
9	B66
Qty.	In Assembly

a18	L3X3X1/4	A36	21	0'-10 15/16"	122	4	
MARK	SIZE	GRADE	QTY.	LENGTH	AREA	WEIGHT	
MATERIAL LIST FOR WORKSHOP					TOTALS	2562 in ²	94 lb/ft

DRAWING No. **a18**

JOB No.		DESCRIPTION	ANGLE
DRAWN BY	NSP	REVISION No.	
DATE DRAWN		REVISION DATE	

Tekla structures



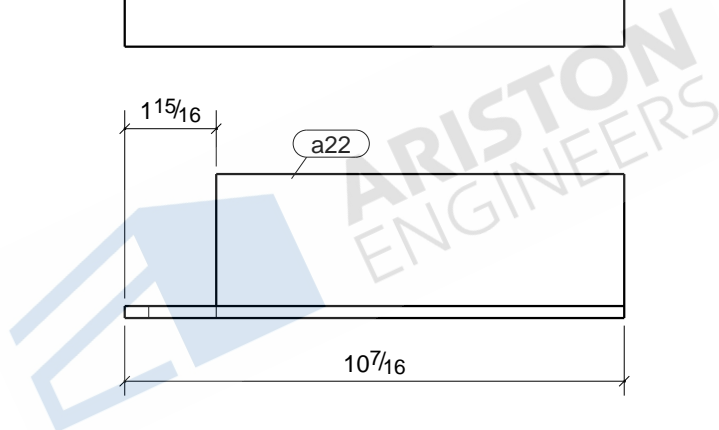
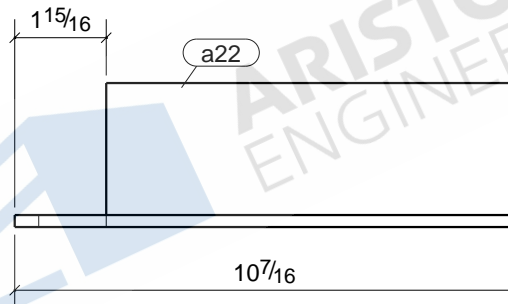
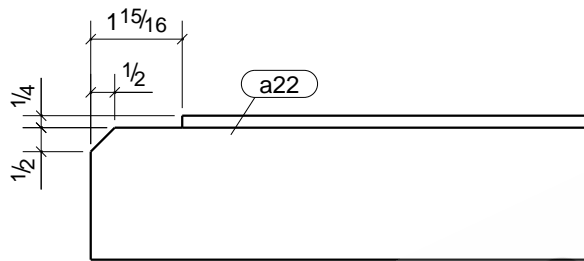
ARISTON ENGINEERS

3	B82
Qty.	In Assembly

a19	L3X3X1/4	A36	3	1'-6 7/16"	212	8	
MARK	SIZE	GRADE	QTY.	LENGTH	AREA	WEIGHT	
MATERIAL LIST FOR WORKSHOP					TOTALS	636 in ²	23 lb/ft

	DRAWING No.	a19		
	JOB No.		DESCRIPTION	ANGLE
	DRAWN BY	NSP	REVISION No.	
	DATE DRAWN		REVISION DATE	

Tekla structures

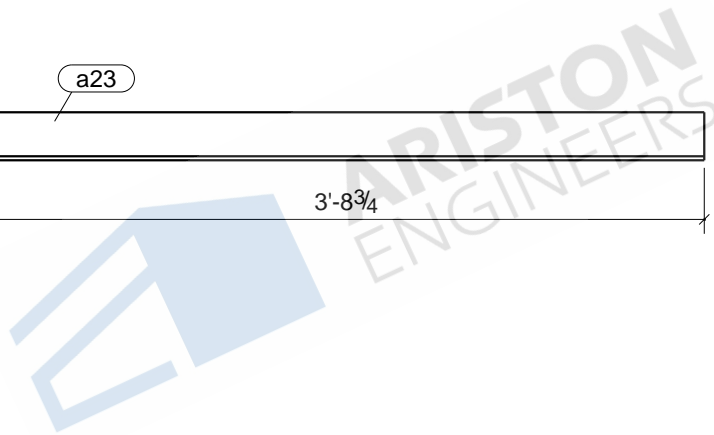
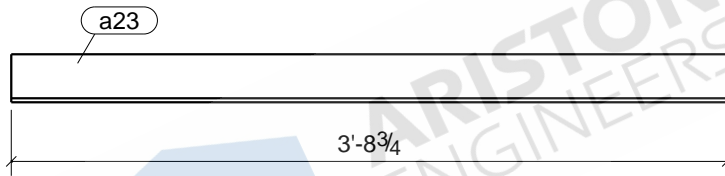


12	B95
Qty.	In Assembly

a22	L3X3X1/4	A36	12	0'-10 7/16"	116	4	
MARK	SIZE	GRADE	QTY.	LENGTH	AREA	WEIGHT	
MATERIAL LIST FOR WORKSHOP					TOTALS	1392 in ²	51 lb/ft

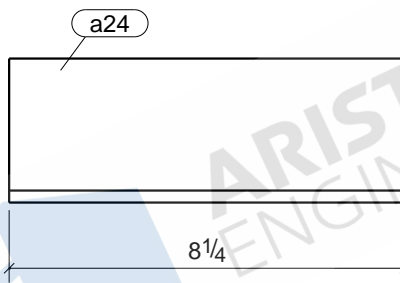
DRAWING No. **a22**

JOB No.		DESCRIPTION	ANGLE
DRAWN BY	NSP	REVISION No.	
DATE DRAWN		REVISION DATE	



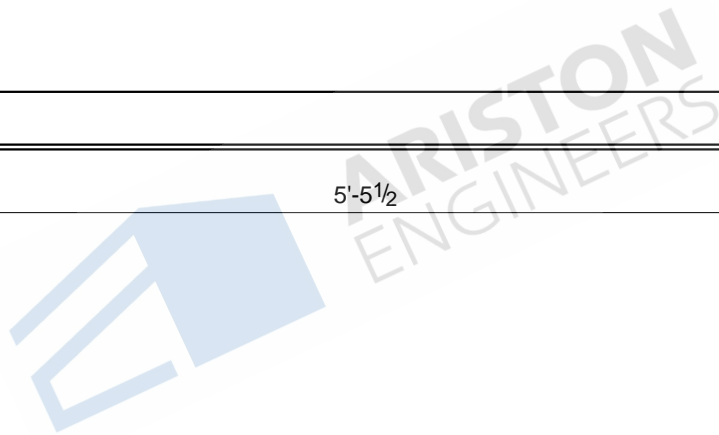
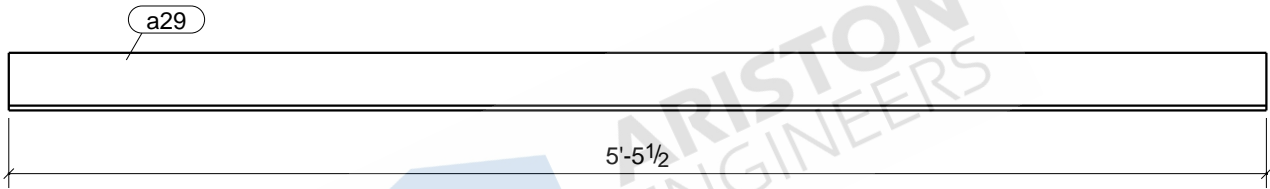
						2	B47
						Qty.	In Assembly
a23	L3X3X1/4	A36	2	3'-8 3/4"	540	18	
MARK	SIZE	GRADE	QTY.	LENGTH	AREA	WEIGHT	
MATERIAL LIST FOR WORKSHOP					TOTALS	1080 in ²	37 lb/ft
			DRAWING No.		a23		
			JOB No.		DESCRIPTION		
			DRAWN BY		REVISION No.		
			DATE DRAWN		REVISION DATE		
			NSP				

Tekla structures



Tekla structures

						1	B47	
						Qty.	In Assembly	
a24	L3X3X1/4	A36	1	0'-8 1/4"		102	3	
MARK	SIZE	GRADE	QTY.	LENGTH		AREA	WEIGHT	
MATERIAL LIST FOR WORKSHOP						TOTALS	102 in ²	3 lb/ft
				DRAWING No.	a24			
				JOB No.		DESCRIPTION	ANGLE	
				DRAWN BY	NSP	REVISION No.		
				DATE DRAWN		REVISION DATE		



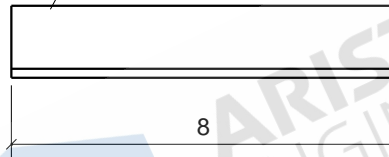
1	B82
1	B93
Qty.	In Assembly

a29	L3X3X1/4	A36	2	5'-5 1/2"	789	27	
MARK	SIZE	GRADE	QTY.	LENGTH	AREA	WEIGHT	
MATERIAL LIST FOR WORKSHOP					TOTALS	1578 in ²	53 lb/ft

DRAWING No.		a29			
JOB No.		DESCRIPTION	ANGLE		
DRAWN BY	NSP	REVISION No.			
DATE DRAWN		REVISION DATE			

Tekla structures

a38

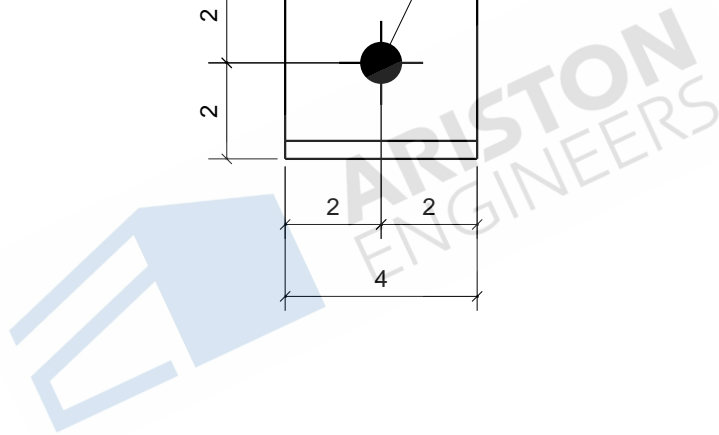
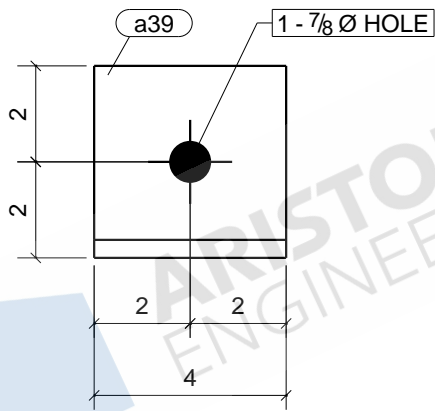


42	ST8
16	ST9
Qty.	In Assembly

a38	L1-1/2X1-1/2X3/16	A36	58	0'-8"	49	1	
MARK	SIZE	GRADE	QTY.	LENGTH	AREA	WEIGHT	
MATERIAL LIST FOR WORKSHOP					TOTALS	2845 in ²	69 lb/ft

DRAWING No. **a38**

JOB No.		DESCRIPTION	ANGLE
DRAWN BY	NSP	REVISION No.	
DATE DRAWN		REVISION DATE	

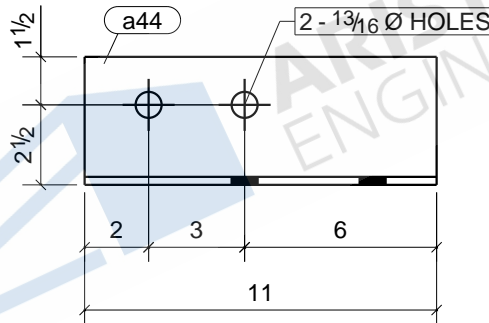
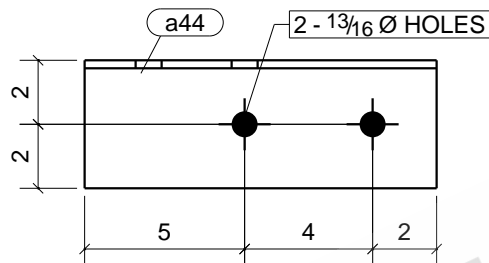


2	ST9
Qty.	In Assembly

a39	L4X4X3/8	A36	2	0'-4"	51	3	
MARK	SIZE	GRADE	QTY.	LENGTH	AREA	WEIGHT	
MATERIAL LIST FOR WORKSHOP					TOTALS	103 in ²	6 lb/ft

DRAWING No. **a39**

JOB No.		DESCRIPTION	ANGLE
DRAWN BY	NSP	REVISION No.	
DATE DRAWN		REVISION DATE	

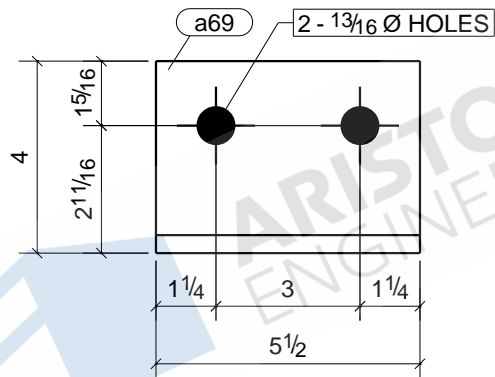


1	B92
Qty.	In Assembly

a44	L4X4X1/4	A36	1	0'-11"	180	6	
MARK	SIZE	GRADE	QTY.	LENGTH	AREA	WEIGHT	
MATERIAL LIST FOR WORKSHOP					TOTALS	180 in ²	6 lb/ft

DRAWING No. **a44**

JOB No.		DESCRIPTION	ANGLE
DRAWN BY	NSP	REVISION No.	
DATE DRAWN		REVISION DATE	

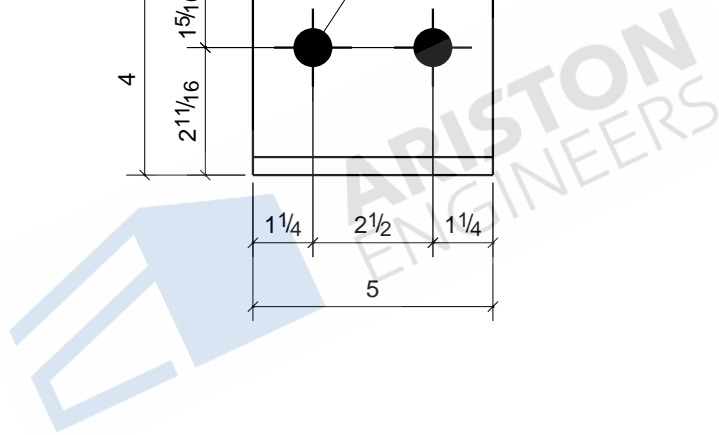
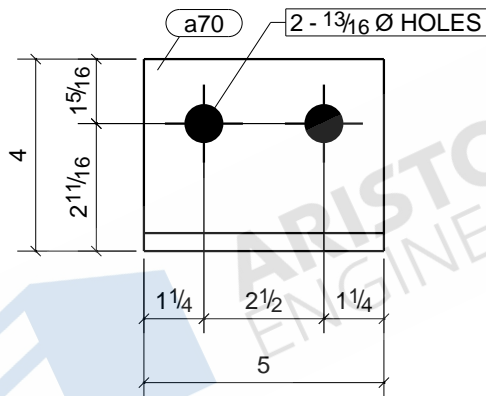


1	B20
4	B38
Qty.	In Assembly

a69	L4X3-1/2X3/8	A36	5	0'-5 1/2"	88	4	
MARK	SIZE	GRADE	QTY.	LENGTH	AREA	WEIGHT	
MATERIAL LIST FOR WORKSHOP					TOTALS	439 in ²	21 lb/ft

DRAWING No. **a69**

JOB No.		DESCRIPTION	ANGLE
DRAWN BY	NSP	REVISION No.	
DATE DRAWN		REVISION DATE	

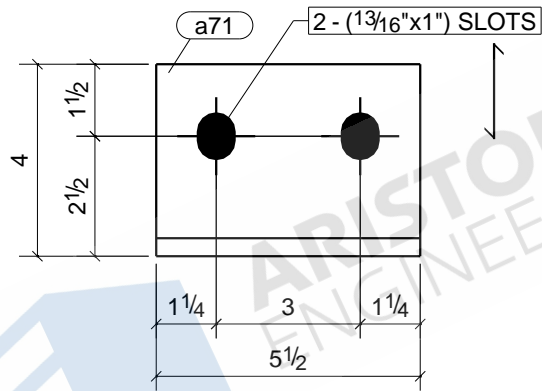


1	B39
1	B41
1	B68
1	B76
Qty.	In Assembly

a70	L4X3-1/2X3/8	A36	4	0'-5"	80	4	
MARK	SIZE	GRADE	QTY.	LENGTH	AREA	WEIGHT	
MATERIAL LIST FOR WORKSHOP					TOTALS	321 in ²	15 lb/ft

DRAWING No. **a70**

JOB No.		DESCRIPTION	ANGLE
DRAWN BY	NSP	REVISION No.	
DATE DRAWN		REVISION DATE	

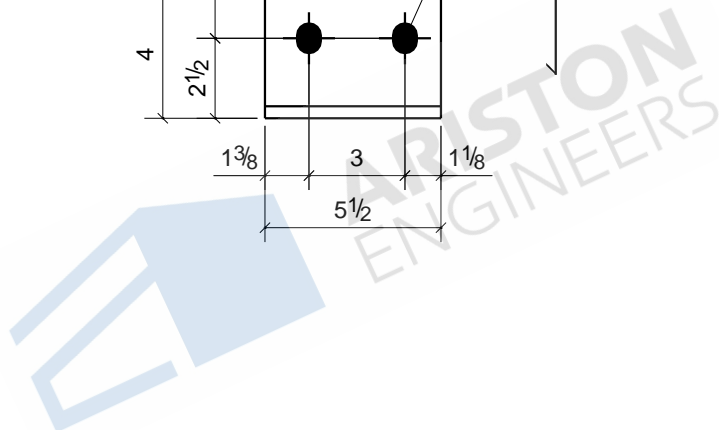
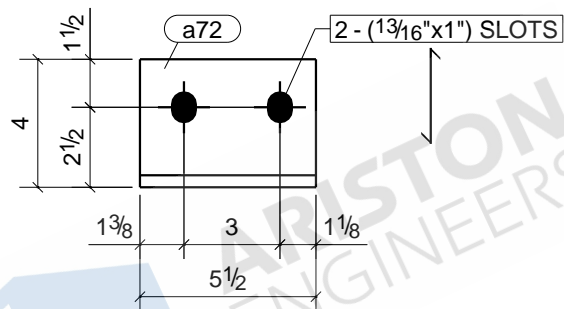


2	B5
1	B6
1	B20
Qty.	In Assembly

a71	L4X3-1/2X3/8	A36	4	0'-5 1/2"	88	4	
MARK	SIZE	GRADE	QTY.	LENGTH	AREA	WEIGHT	
MATERIAL LIST FOR WORKSHOP					TOTALS	351 in ²	17 lb/ft

DRAWING No. **a71**

JOB No.		DESCRIPTION	ANGLE
DRAWN BY	NSP	REVISION No.	
DATE DRAWN		REVISION DATE	

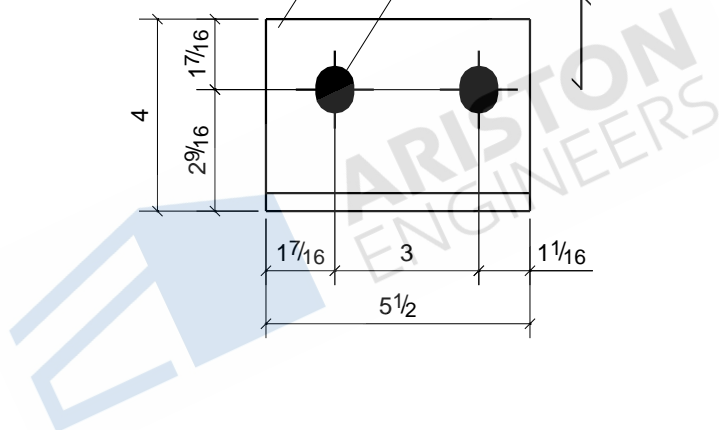
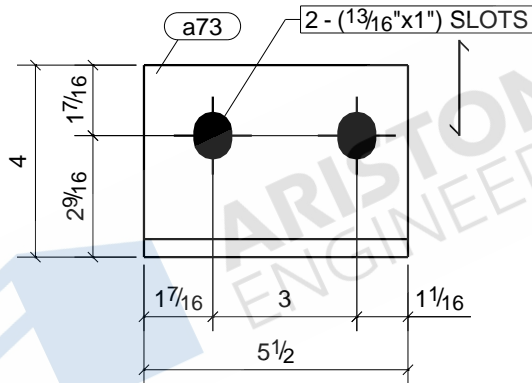


1	B7
Qty.	In Assembly
88	4
88 in ²	4 lb/ft

a72	L4X3-1/2X3/8	A36	1	0'5 1/2"	88	4
MARK	SIZE	GRADE	QTY.	LENGTH	AREA	WEIGHT
MATERIAL LIST FOR WORKSHOP					TOTALS	

DRAWING No.		a72	
JOB No.		DESCRIPTION	ANGLE
DRAWN BY	NSP	REVISION No.	
DATE DRAWN		REVISION DATE	

Tekla structures



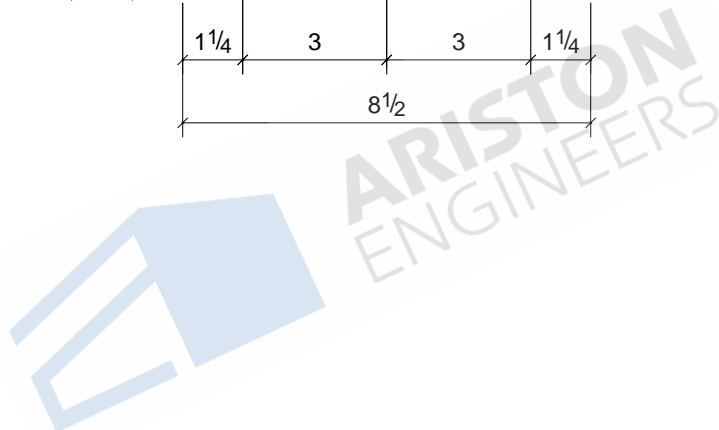
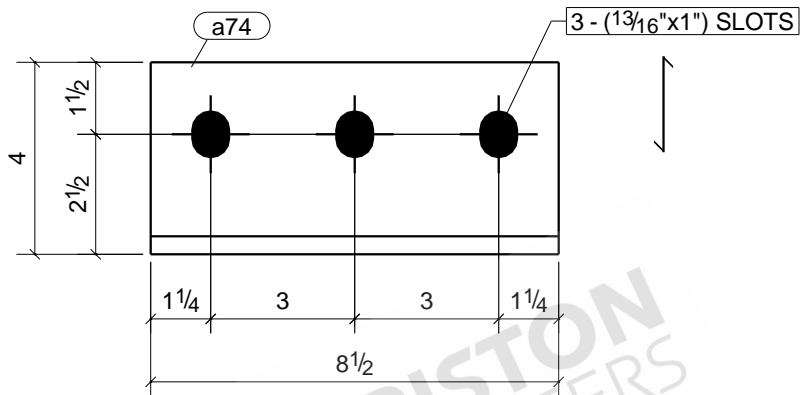
1	B6
Qty.	In Assembly
88	4
88 in ²	4 lb/ft

a73	L4X3-1/2X3/8	A36	1	0'-5 1/2"	88	4
MARK	SIZE	GRADE	QTY.	LENGTH	AREA	WEIGHT
MATERIAL LIST FOR WORKSHOP					TOTALS	

DRAWING No. **a73**

JOB No.		DESCRIPTION	ANGLE
DRAWN BY	NSP	REVISION No.	
DATE DRAWN		REVISION DATE	

Tekla structures

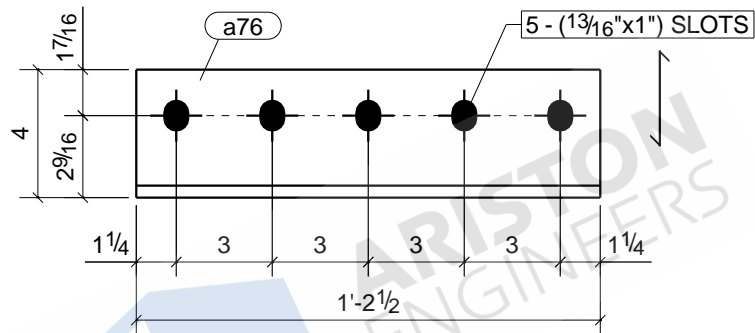


1	B3
1	B4
1	B9
Qty.	In Assembly

a74	L4X3-1/2X3/8	A36	3	0'-8 1/2"	133	6	
MARK	SIZE	GRADE	QTY.	LENGTH	AREA	WEIGHT	
MATERIAL LIST FOR WORKSHOP					TOTALS	399 in ²	19 lb/ft

DRAWING No. **a74**

JOB No.		DESCRIPTION	ANGLE
DRAWN BY	NSP	REVISION No.	
DATE DRAWN		REVISION DATE	

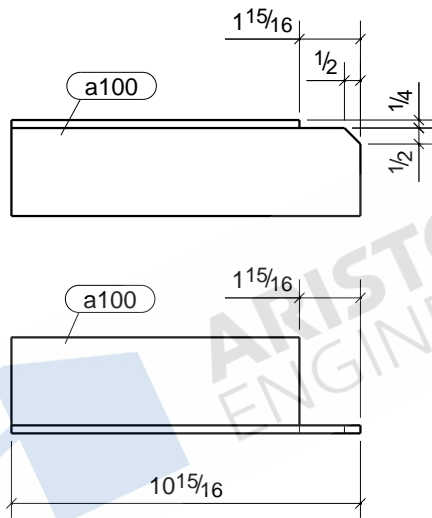


2	B14
2	B27
Qty.	In Assembly

a76	L4X3-1/2X3/8	A36	4	1'-2 1/2"	223	11	
MARK	SIZE	GRADE	QTY.	LENGTH	AREA	WEIGHT	
MATERIAL LIST FOR WORKSHOP					TOTALS	891 in ²	44 lb/ft

DRAWING No. **a76**

JOB No.		DESCRIPTION	ANGLE
DRAWN BY	NSP	REVISION No.	
DATE DRAWN		REVISION DATE	

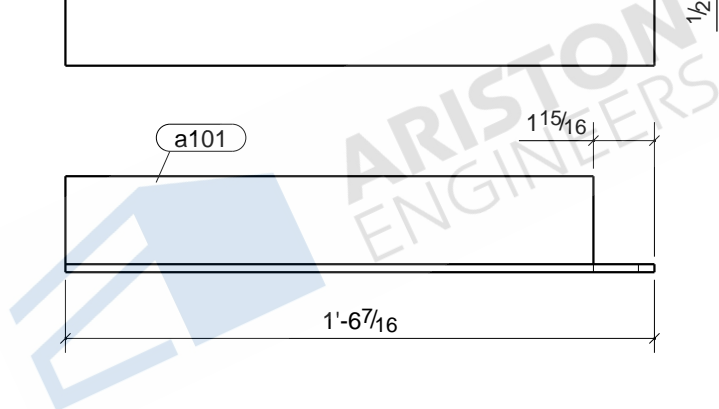
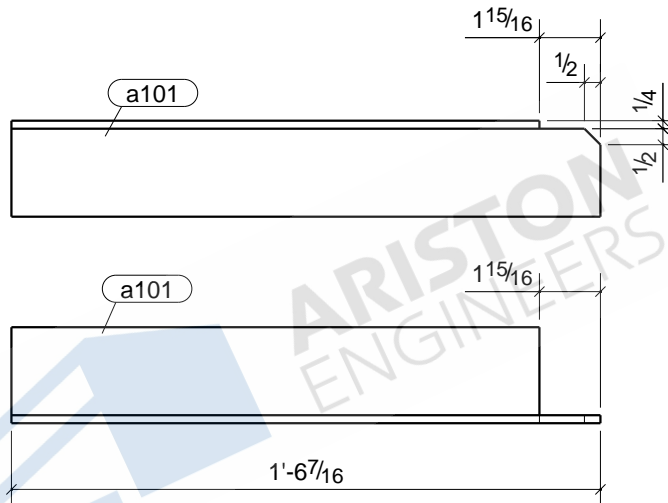


9	B97
12	B101
Qty.	In Assembly

a100	L3X3X1/4	A36	21	0'-10 15/16"	122	4	
MARK	SIZE	GRADE	QTY.	LENGTH	AREA	WEIGHT	
MATERIAL LIST FOR WORKSHOP					TOTALS	2562 in ²	94 lb/ft

DRAWING No. **a100**

JOB No.		DESCRIPTION	ANGLE
DRAWN BY	NSP	REVISION No.	
DATE DRAWN		REVISION DATE	

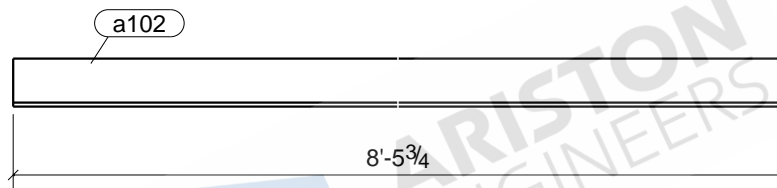


3	B93
Qty.	In Assembly

a101	L3X3X1/4	A36	3	1'-6 7/16"	212	8	
MARK	SIZE	GRADE	QTY.	LENGTH	AREA	WEIGHT	
MATERIAL LIST FOR WORKSHOP					TOTALS	636 in ²	23 lb/ft

		DRAWING No.		a101	
		JOB No.		DESCRIPTION	
		DRAWN BY		REVISION No.	
		DATE DRAWN		REVISION DATE	
		NSP			

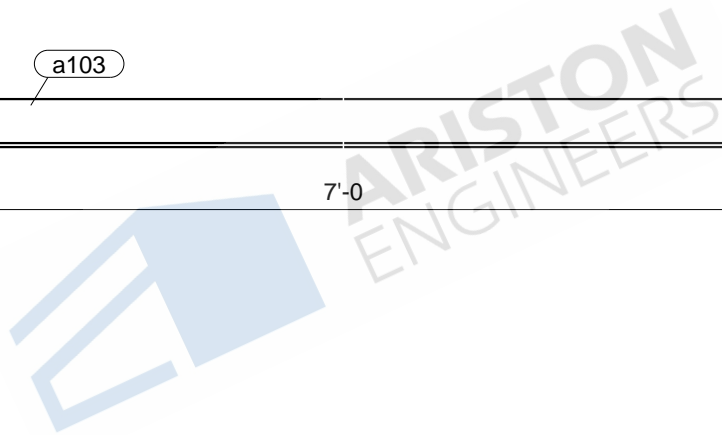
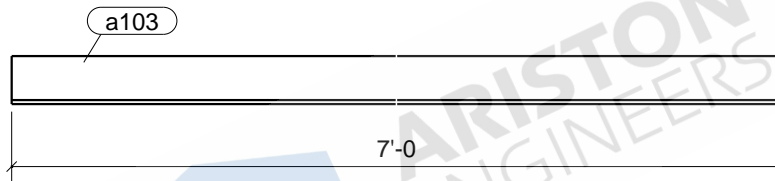
Tekla structures



ARISTON ENGINEERS

						1	B68
						Qty.	In Assembly
a102	L3X3X1/4	A36	1	8'-5 3/4"	1224	42	
MARK	SIZE	GRADE	QTY.	LENGTH	AREA	WEIGHT	
MATERIAL LIST FOR WORKSHOP					TOTALS	1224 in ²	42 lb/ft
			DRAWING No.		a102		
			JOB No.		DESCRIPTION		ANGLE
			DRAWN BY		REVISION No.		
			DATE DRAWN		REVISION DATE		

Tekla structures

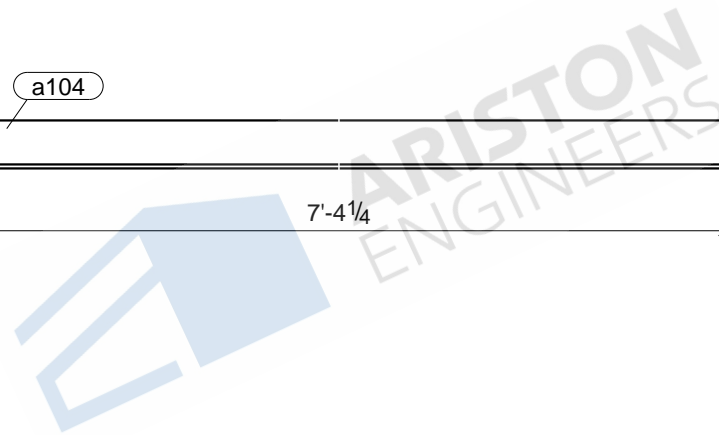
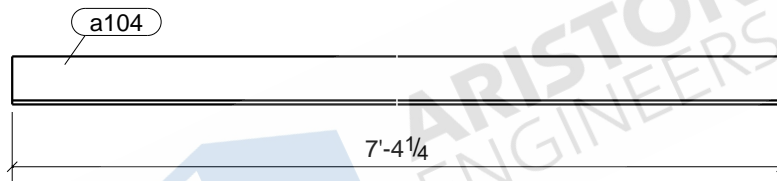


1	B69
Qty.	In Assembly

a103	L3X3X1/4	A36	1	7'-0"	1011	34	
MARK	SIZE	GRADE	QTY.	LENGTH	AREA	WEIGHT	
MATERIAL LIST FOR WORKSHOP					TOTALS	1011 in ²	34 lb/ft

	DRAWING No.		a103			
	JOB No.				DESCRIPTION	ANGLE
	DRAWN BY		NSP		REVISION No.	
	DATE DRAWN				REVISION DATE	

Tekla structures



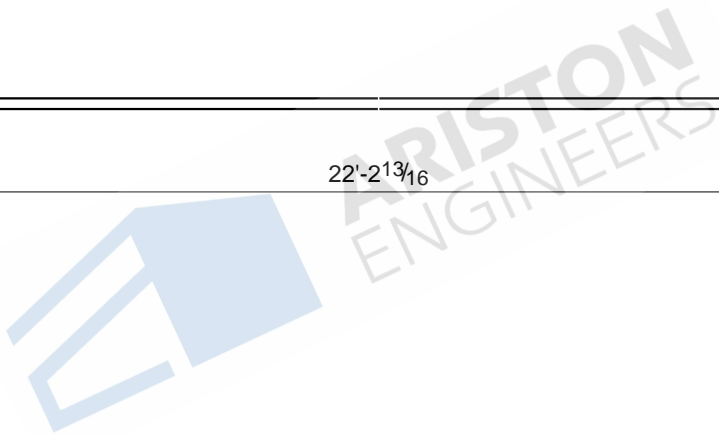
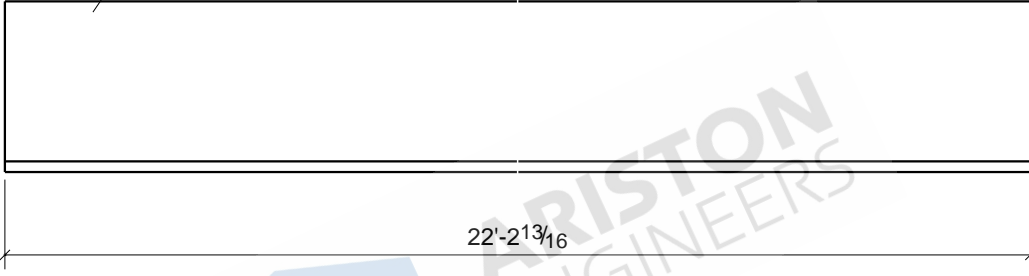
Tekla structures

1	B76
Qty.	In Assembly
36	36

a104	L3X3X1/4	A36	1	7'-4 1/4"	1062	36	
MARK	SIZE	GRADE	QTY.	LENGTH	AREA	WEIGHT	
MATERIAL LIST FOR WORKSHOP					TOTALS	1062 in ²	36 lb/ft

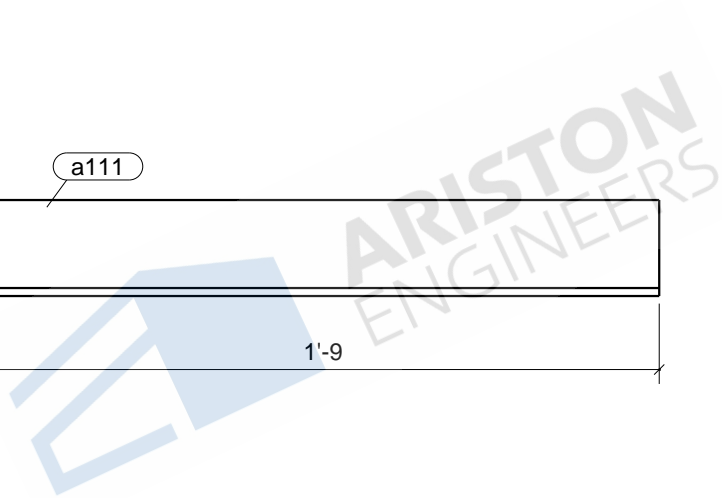
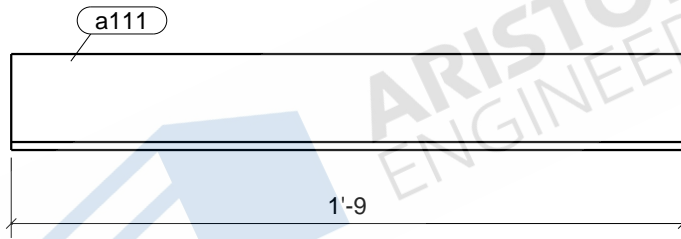
		DRAWING No. a104	
		JOB No.	DESCRIPTION
		DRAWN BY	REVISION No.
		DATE DRAWN	REVISION DATE
		NSP	

a110



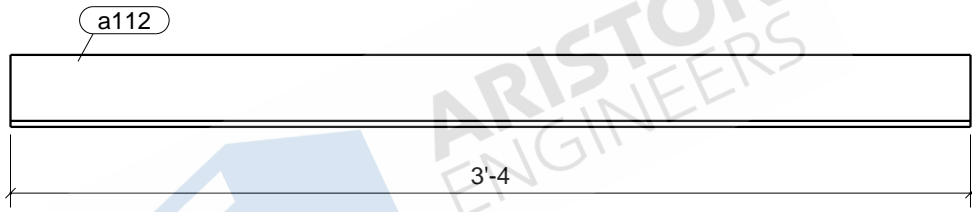
						1	B89
						Qty.	In Assembly
a110	L4X4X1/4	A36	1	22'-2 13/16"	4273	146	
MARK	SIZE	GRADE	QTY.	LENGTH	AREA	WEIGHT	
MATERIAL LIST FOR WORKSHOP					TOTALS	4273 in ²	146 lb/ft
			DRAWING No.		a110		
			JOB No.		DESCRIPTION	ANGLE	
			DRAWN BY		NSP	REVISION No.	
			DATE DRAWN			REVISION DATE	

Tekla structures



						4	B89
						Qty.	In Assembly
a111	L3X3X1/4	A36	4	1'-9"	255	9	
MARK	SIZE	GRADE	QTY.	LENGTH	AREA	WEIGHT	
MATERIAL LIST FOR WORKSHOP					TOTALS	1020 in ²	34 lb/ft
				DRAWING No.	a111		
				JOB No.	DESCRIPTION	ANGLE	
				DRAWN BY	NSP	REVISION No.	
				DATE DRAWN		REVISION DATE	

Tekla structures



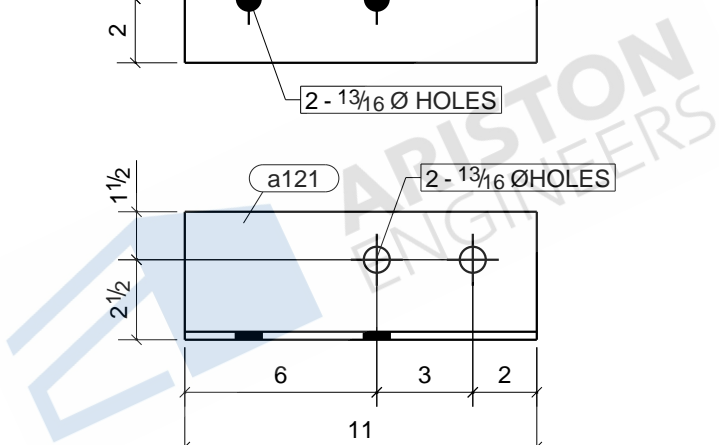
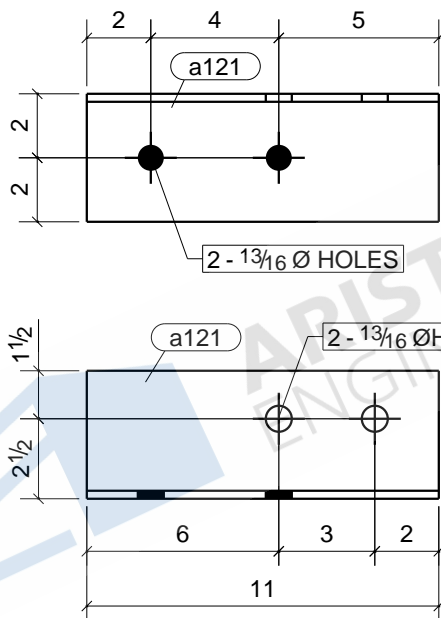
a112

3'-4



						3	B89
						Qty.	In Assembly
a112	L3X3X1/4	A36	3	3'-4"	483	16	
MARK	SIZE	GRADE	QTY.	LENGTH	AREA	WEIGHT	
MATERIAL LIST FOR WORKSHOP					TOTALS	1449 in ²	49 lb/ft
			DRAWING No.		a112		
			JOB No.		DESCRIPTION		ANGLE
			DRAWN BY		REVISION No.		
			DATE DRAWN		REVISION DATE		

Tekla structures

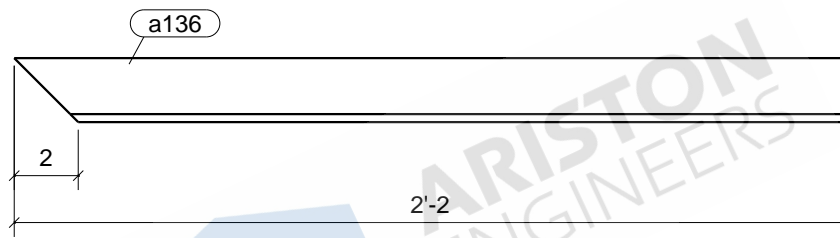


1	B78
Qty.	In Assembly
180	6
180 in ²	6 lb/ft

a121	L4X4X1/4	A36	1	0'-11"	180	6
MARK	SIZE	GRADE	QTY.	LENGTH	AREA	WEIGHT
MATERIAL LIST FOR WORKSHOP					TOTALS	

DRAWING No.	a121		
JOB No.		DESCRIPTION	ANGLE
DRAWN BY	NSP	REVISION No.	
DATE DRAWN		REVISION DATE	

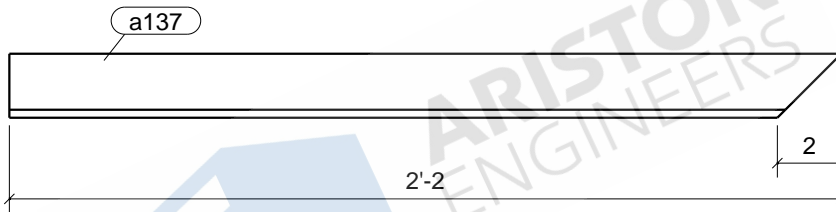
Tekla structures



1	FR4
Qty.	In Assembly

a136	L2X2X1/4	A36	1	2'-2"	199	7	
MARK	SIZE	GRADE	QTY.	LENGTH	AREA	WEIGHT	
MATERIAL LIST FOR WORKSHOP					TOTALS	199 in ²	7 lb/ft

Tekla structures	DRAWING No.		a136			
	JOB No.		DESCRIPTION	ANGLE		
	DRAWN BY	NSP	REVISION No.			
	DATE DRAWN		REVISION DATE			

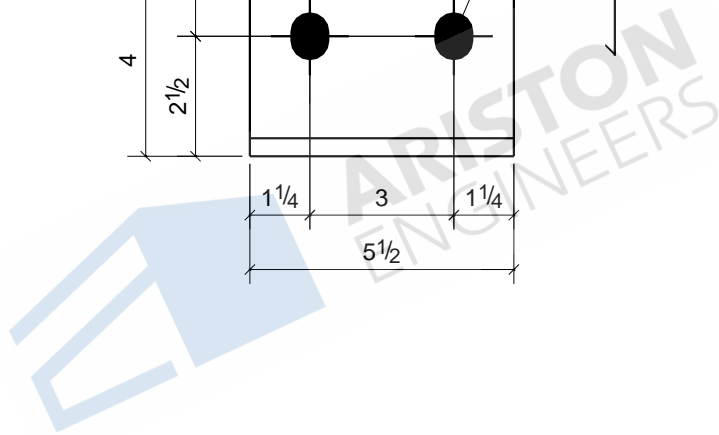
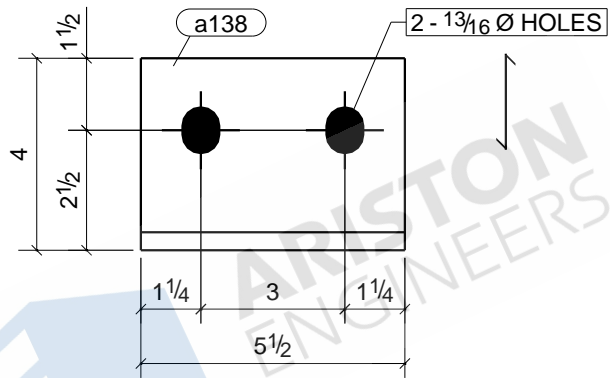


1	FR4
Qty.	In Assembly
7	7
199	7 lb/ft

a137	L2X2X1/4	A36	1	2'-2"	199	7	
MARK	SIZE	GRADE	QTY.	LENGTH	AREA	WEIGHT	
MATERIAL LIST FOR WORKSHOP					TOTALS	199 in ²	7 lb/ft

	DRAWING No.		a137		
	JOB No.		DESCRIPTION	ANGLE	
	DRAWN BY	NSP	REVISION No.		
	DATE DRAWN		REVISION DATE		

Tekla structures



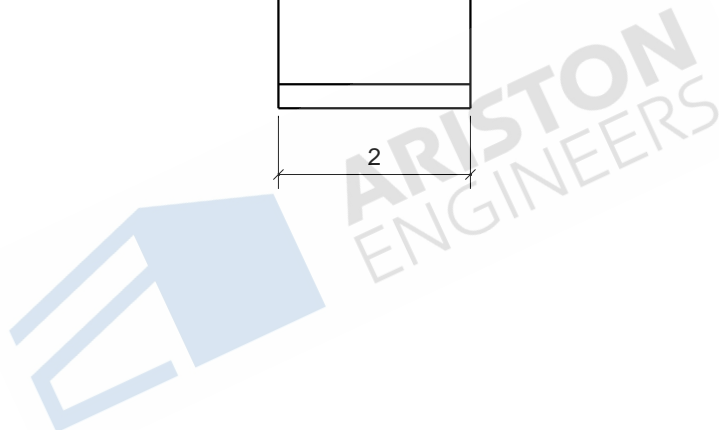
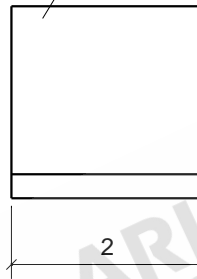
1	B7
Qty.	In Assembly

a138	L4X3-1/2X3/8	A36	1	0'-5 1/2"	88	4	
MARK	SIZE	GRADE	QTY.	LENGTH	AREA	WEIGHT	
MATERIAL LIST FOR WORKSHOP					TOTALS	88 in ²	4 lb/ft

DRAWING No. **a138**

JOB No.		DESCRIPTION	ANGLE
DRAWN BY	NSP	REVISION No.	
DATE DRAWN		REVISION DATE	

a143



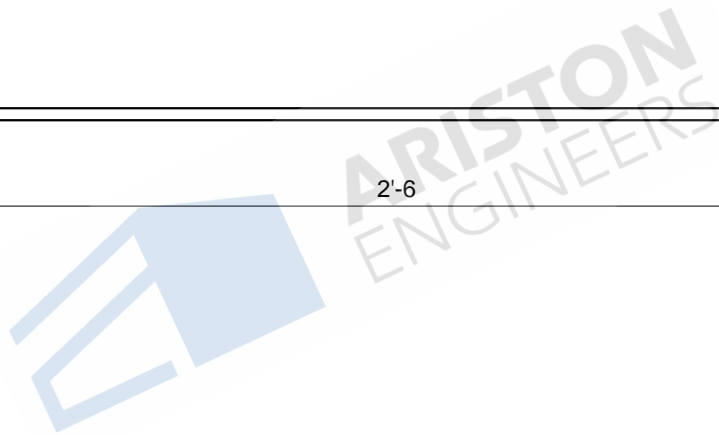
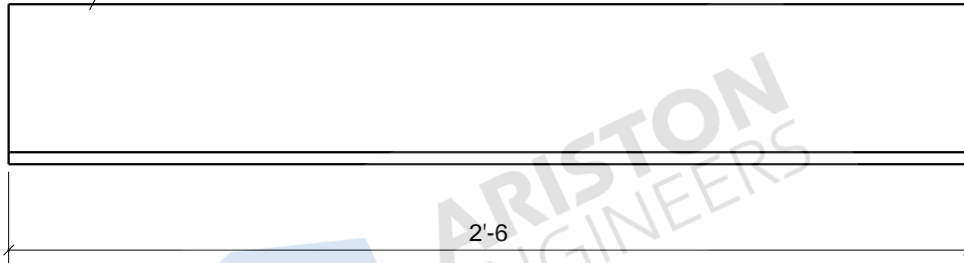
2	GR10
Qty.	In Assembly

a143	L2X2X1/4	A36	2	0'-2"	18	1	
MARK	SIZE	GRADE	QTY.	LENGTH	AREA	WEIGHT	
MATERIAL LIST FOR WORKSHOP					TOTALS	36 in ²	1 lb/ft

DRAWING No. **a143**

JOB No.		DESCRIPTION	ANGLE
DRAWN BY	NSP	REVISION No.	
DATE DRAWN		REVISION DATE	

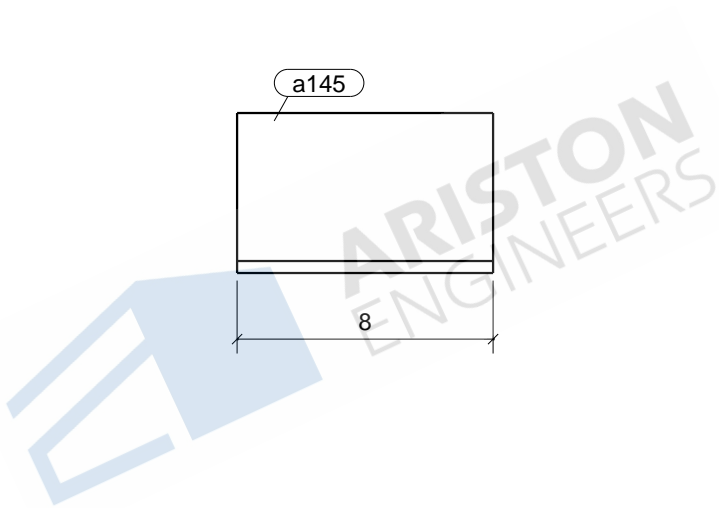
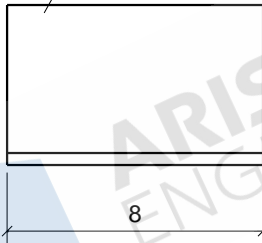
a144



						2	FR6
						Qty.	In Assembly
a144	L5X3X3/8	A36	2	2'-6"	486	24	
MARK	SIZE	GRADE	QTY.	LENGTH	AREA	WEIGHT	
MATERIAL LIST FOR WORKSHOP					TOTALS	971 in ²	49 lb/ft
			DRAWING No.		a144		
			JOB No.		DESCRIPTION		ANGLE
			DRAWN BY		REVISION No.		
			DATE DRAWN		REVISION DATE		

Tekla structures

a145



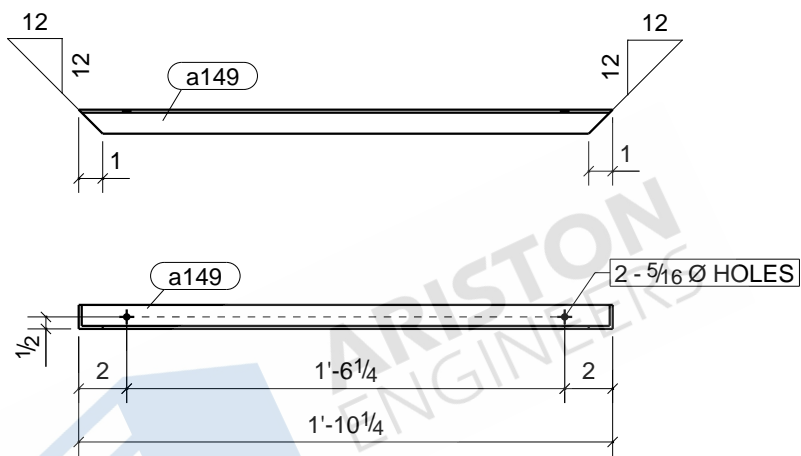
4	FR6
4	FR7
2	FR8
4	FR9
4	FR10
4	FR11
5	FR12
5	FR13
4	FR14
4	FR15
4	FR16
4	FR17
4	FR18
4	FR19
4	FR20
4	FR21
4	FR22
4	FR23
4	FR24
4	FR25
4	FR26
4	FR27
4	FR28
3	FR29
4	FR30
4	FR31
4	FR32
6	FR33
Qty.	In Assembly

1

a145	L5X5X3/8	A36	113	0'-8"	167	8	
MARK	SIZE	GRADE	QTY.	LENGTH	AREA	WEIGHT	
MATERIAL LIST FOR WORKSHOP					TOTALS	18896 in ²	936 lb/ft

DRAWING No. **a145**

JOB No.		DESCRIPTION	ANGLE
DRAWN BY	NSP	REVISION No.	
DATE DRAWN		REVISION DATE	

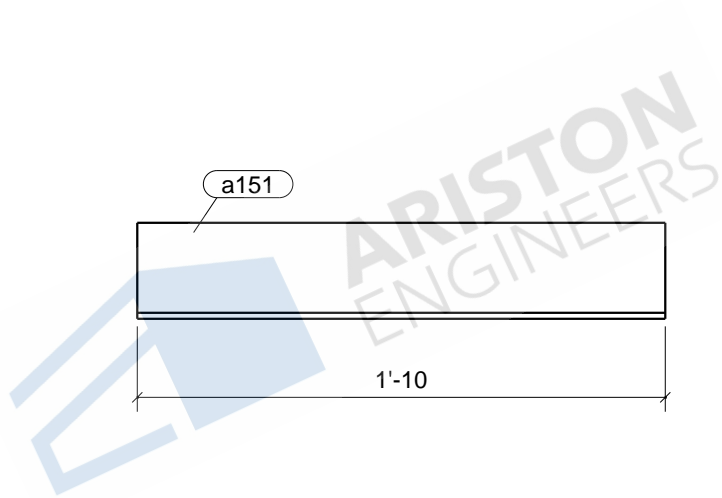


1	FR5
2	FR34
2	FR38
1	FR39
1	FR40
1	FR41
Qty.	In Assembly

a149	L1X1X1/8	A36	8	1'-10 1/4"	87	1	
MARK	SIZE	GRADE	QTY.	LENGTH	AREA	WEIGHT	
MATERIAL LIST FOR WORKSHOP					TOTALS	698 in ²	12 lb/ft

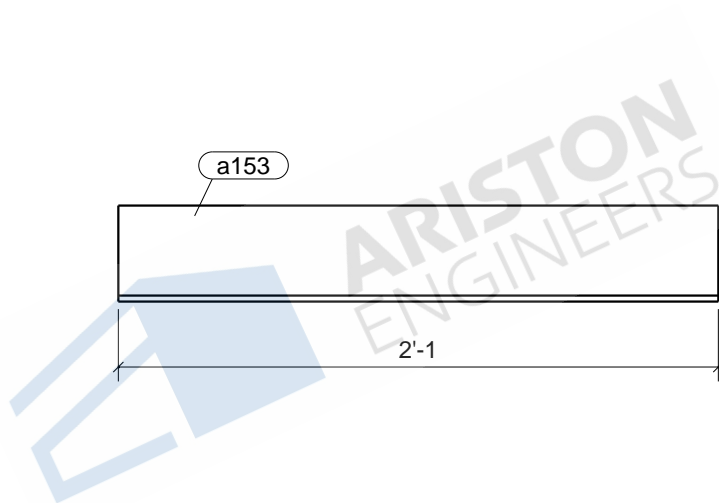
DRAWING No. **a149**

JOB No.		DESCRIPTION	ANGLE
DRAWN BY	NSP	REVISION No.	
DATE DRAWN		REVISION DATE	



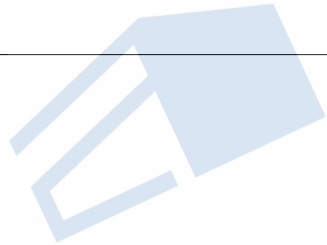
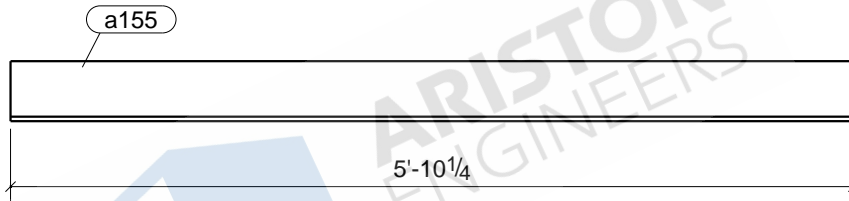
Tekla structures

						1	FR7
						Qty.	In Assembly
a151	L4X4X1/4	A36	1	1'-10"	356	12	
MARK	SIZE	GRADE	QTY.	LENGTH	AREA	WEIGHT	
MATERIAL LIST FOR WORKSHOP					TOTALS	356 in ²	12 lb/ft
				DRAWING No.	a151		
				JOB No.		DESCRIPTION	ANGLE
				DRAWN BY	NSP	REVISION No.	
				DATE DRAWN		REVISION DATE	



Tekla structures

						1	FR9
						Qty.	In Assembly
a153	L4X4X1/4	A36	1	2'-1"	404	14	
MARK	SIZE	GRADE	QTY.	LENGTH	AREA	WEIGHT	
MATERIAL LIST FOR WORKSHOP					TOTALS	404 in ²	14 lb/ft
			DRAWING No.		a153		
			JOB No.		DESCRIPTION	ANGLE	
			DRAWN BY	NSP	REVISION No.		
			DATE DRAWN		REVISION DATE		



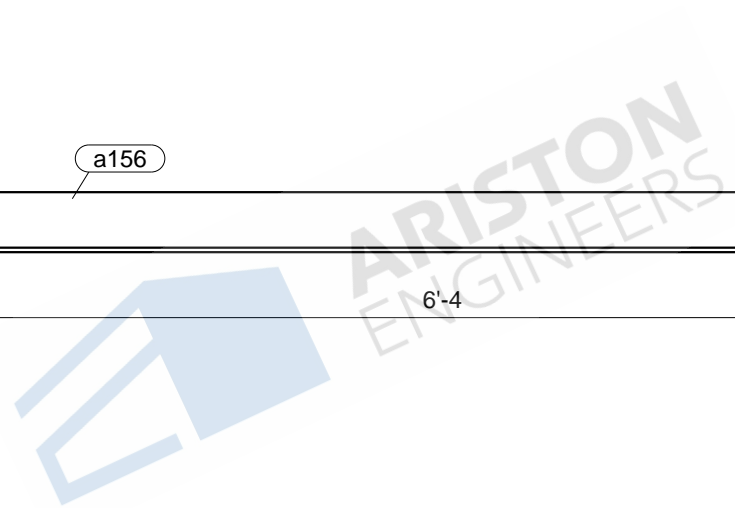
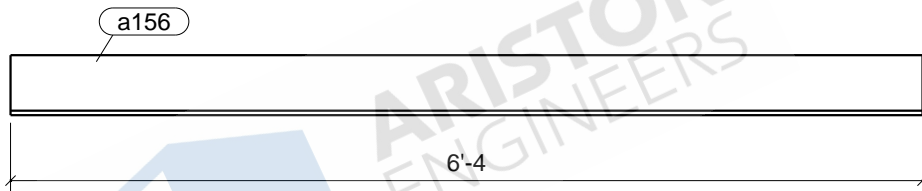
ARISTON ENGINEERS

1	FR12
1	FR13
Qty.	In Assembly

a155	L5X3X3/8	A36	2	5'-10 1/4"	1130	57	
MARK	SIZE	GRADE	QTY.	LENGTH	AREA	WEIGHT	
MATERIAL LIST FOR WORKSHOP					TOTALS	2259 in ²	114 lb/ft

		DRAWING No.		a155	
		JOB No.		DESCRIPTION	
		DRAWN BY		REVISION No.	
		DATE DRAWN		REVISION DATE	
		NSP			

Tekla structures

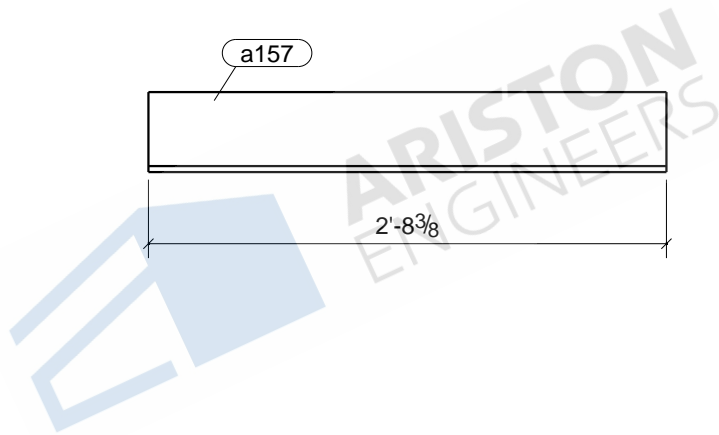


1	FR12
1	FR13
2	FR32
Qty.	In Assembly

a156	L5X3X3/8	A36	4	6'-4"	1222	62	
MARK	SIZE	GRADE	QTY.	LENGTH	AREA	WEIGHT	
MATERIAL LIST FOR WORKSHOP					TOTALS	4887 in ²	247 lb/ft

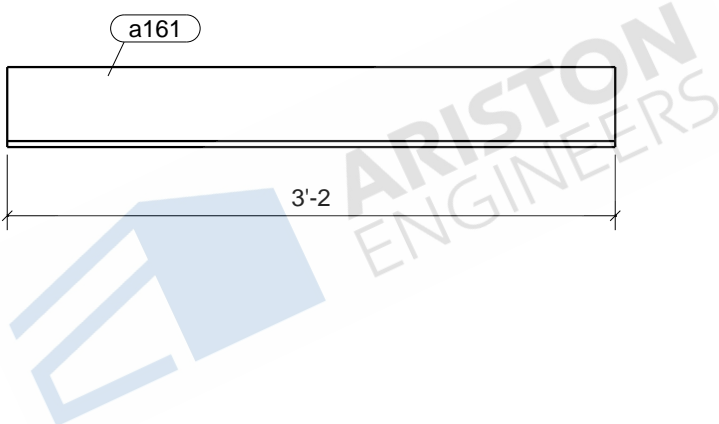
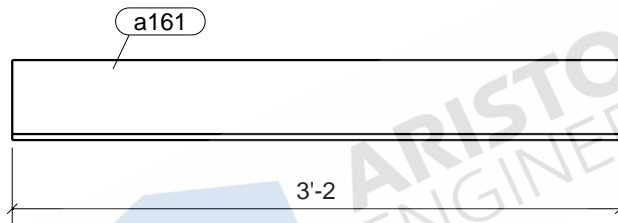
		DRAWING No.		a156	
		JOB No.		DESCRIPTION	
		DRAWN BY		REVISION No.	
		DATE DRAWN		REVISION DATE	
		NSP			

Tekla structures



Tekla structures

						1	FR12
						Qty.	In Assembly
a157	L5X3X3/8	A36	1	2'-8 3/8"	524	26	
MARK	SIZE	GRADE	QTY.	LENGTH	AREA	WEIGHT	
MATERIAL LIST FOR WORKSHOP					TOTALS	524 in ²	26 lb/ft
			DRAWING No.		a157		
			JOB No.		DESCRIPTION	ANGLE	
			DRAWN BY		NSP	REVISION No.	
			DATE DRAWN		REVISION DATE		

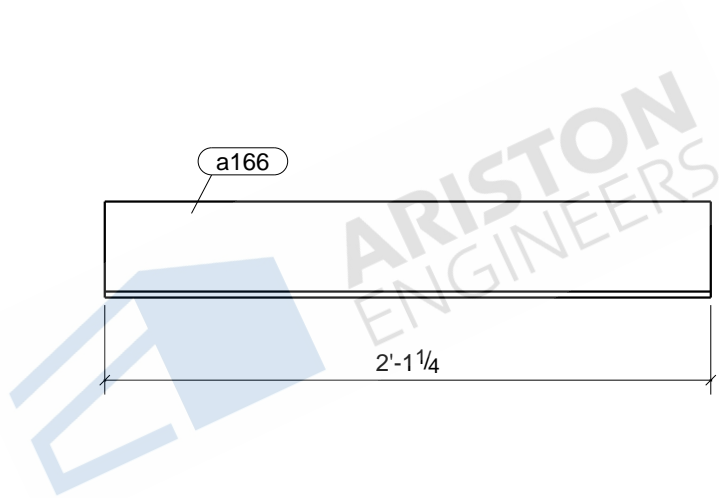


1	FR14
1	FR15
2	FR16
2	FR17
2	FR18
2	FR19
2	FR20
1	FR21
1	FR22
1	FR23
1	FR24
1	FR25
1	FR26
1	FR27
2	FR28
2	FR29
1	FR30
1	FR31
1	FR32
Qty.	In Assembly

a161	L5X3X3/8	A36	26	3'-2"	614	31	
MARK	SIZE	GRADE	QTY.	LENGTH	AREA	WEIGHT	
MATERIAL LIST FOR WORKSHOP					TOTALS	15957 in ²	801 lb/ft

	DRAWING No.	a161		
	JOB No.		DESCRIPTION	ANGLE
	DRAWN BY	NSP	REVISION No.	
	DATE DRAWN		REVISION DATE	

Tekla structures



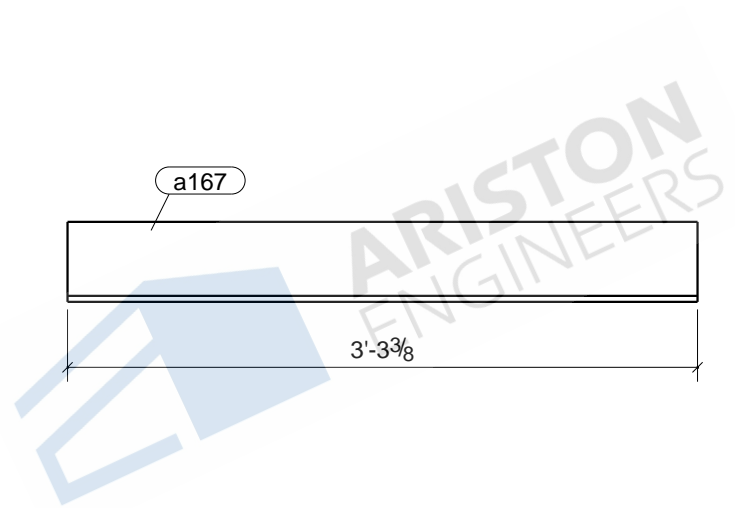
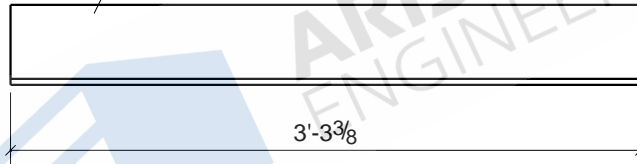
Tekla structures

1	FR7
Qty.	In Assembly
408	14
408 in ²	14 lb/ft

a166	L4X4X1/4	A36	1	2'-1 1/4"	408	
MARK	SIZE	GRADE	QTY.	LENGTH	AREA	WEIGHT
MATERIAL LIST FOR WORKSHOP					TOTALS	

DRAWING No.		a166			
JOB No.		DESCRIPTION	ANGLE		
DRAWN BY	NSP	REVISION No.			
DATE DRAWN		REVISION DATE			

a167

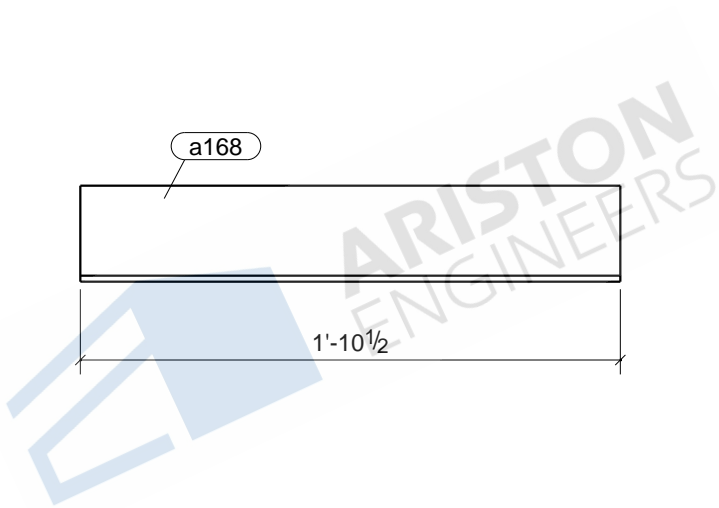
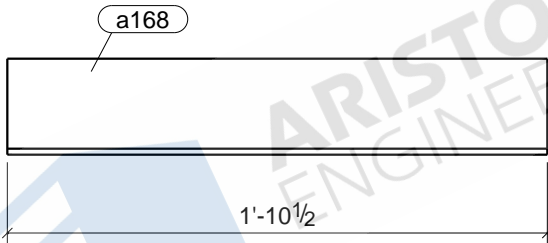


1	FR13
Qty.	In Assembly

a167	L5X3X3/8	A36	1	3'-3 3/8"	636	32	
MARK	SIZE	GRADE	QTY.	LENGTH	AREA	WEIGHT	
MATERIAL LIST FOR WORKSHOP					TOTALS	636 in ²	32 lb/ft

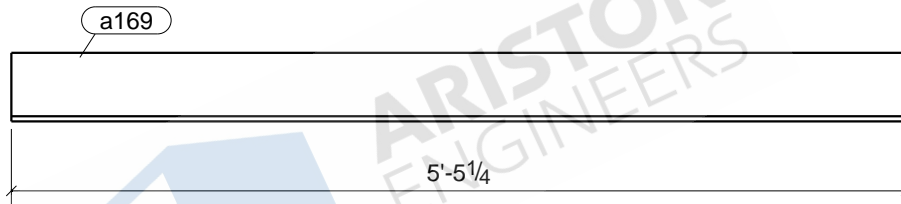
		DRAWING No.		a167	
		JOB No.		DESCRIPTION	
		DRAWN BY		REVISION No.	
		DATE DRAWN		REVISION DATE	
		NSP			

Tekla structures



Tekla structures

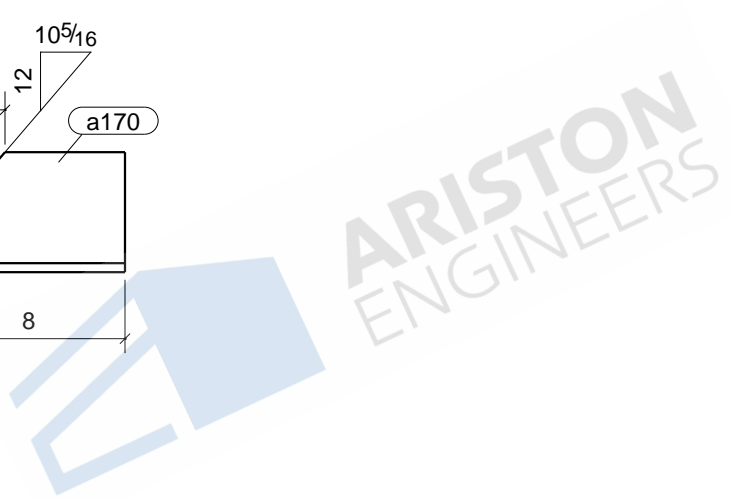
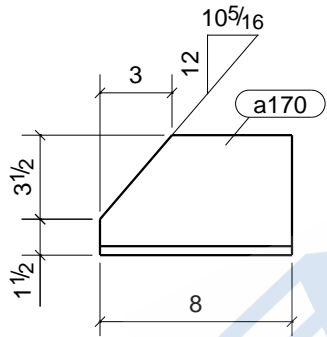
						1	FR9
						Qty.	In Assembly
a168	L4X4X1/4	A36	1	1'-10 1/2"	364	12	
MARK	SIZE	GRADE	QTY.	LENGTH	AREA	WEIGHT	
MATERIAL LIST FOR WORKSHOP					TOTALS	364 in ²	12 lb/ft
			DRAWING No.		a168		
			JOB No.		DESCRIPTION	ANGLE	
			DRAWN BY		NSP	REVISION No.	
			DATE DRAWN			REVISION DATE	



ARISTON ENGINEERS

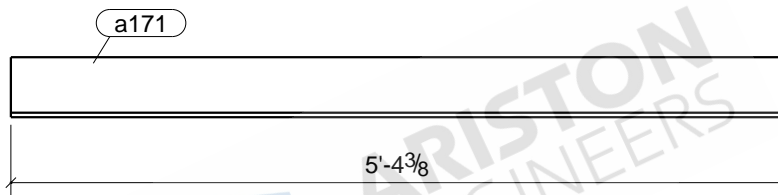
						1	FR6
						Qty.	In Assembly
a169	L5X3X3/8	A36	1	5'-5 1/4"	1050	53	
MARK	SIZE	GRADE	QTY.	LENGTH	AREA	WEIGHT	
MATERIAL LIST FOR WORKSHOP					TOTALS	1050 in ²	53 lb/ft
			DRAWING No.		a169		
			JOB No.		DESCRIPTION	FRAME	
			DRAWN BY		NSP	REVISION No.	
			DATE DRAWN			REVISION DATE	

Tekla structures



Tekla structures

						1	FR29
						Qty.	In Assembly
a170	L5X5X3/8	A36	1	0'-8"	156	8	
MARK	SIZE	GRADE	QTY.	LENGTH	AREA	WEIGHT	
MATERIAL LIST FOR WORKSHOP					TOTALS	156 in ²	8 lb/ft
				DRAWING No.	a170		
				JOB No.		DESCRIPTION	ANGLE
				DRAWN BY	NSP	REVISION No.	
				DATE DRAWN		REVISION DATE	



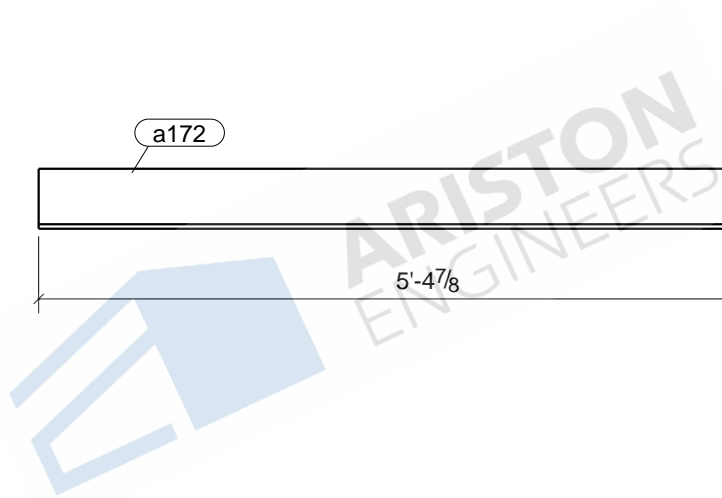
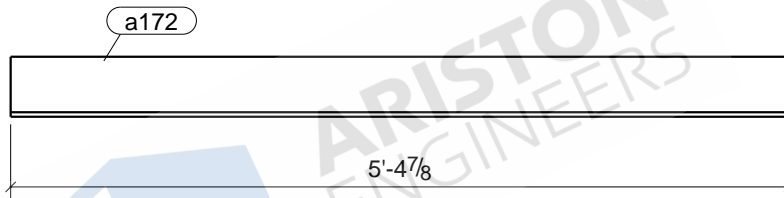
ARISTON ENGINEERS

1	FR14
Qty.	In Assembly
1036	52
1036 in ²	52 lb/ft

a171	L5X3X3/8	A36	1	5'-4 3/8"	1036	52
MARK	SIZE	GRADE	QTY.	LENGTH	AREA	WEIGHT
MATERIAL LIST FOR WORKSHOP				TOTALS	1036 in ²	52 lb/ft

DRAWING No.	a171		
JOB No.		DESCRIPTION	ANGLE
DRAWN BY	NSP	REVISION No.	
DATE DRAWN		REVISION DATE	

Tekla structures

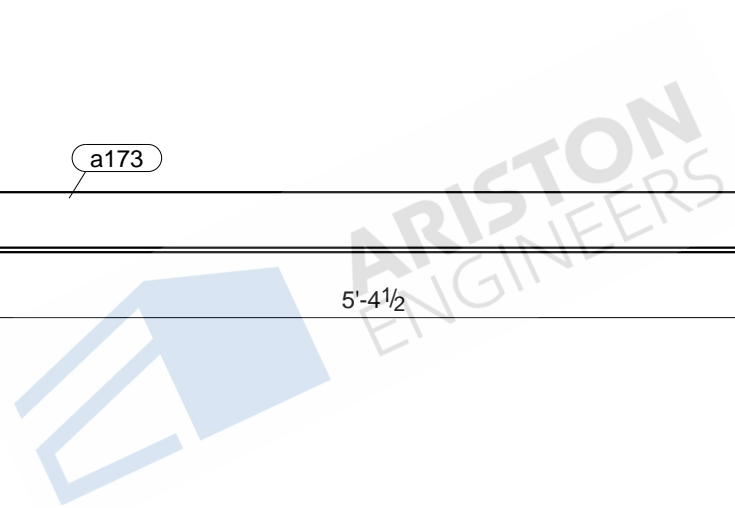
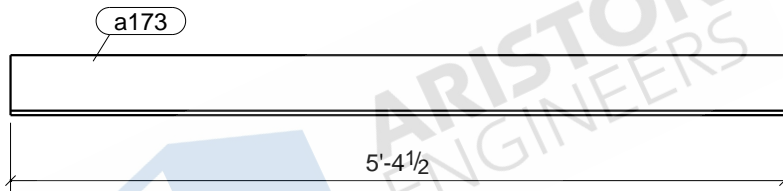


1	FR15
Qty.	In Assembly

a172	L5X3X3/8	A36	1	5'-4 7/8"	1044	53	
MARK	SIZE	GRADE	QTY.	LENGTH	AREA	WEIGHT	
MATERIAL LIST FOR WORKSHOP					TOTALS	1044 in ²	53 lb/ft

		DRAWING No.		a172	
		JOB No.		DESCRIPTION	
		DRAWN BY		REVISION No.	
		DATE DRAWN		REVISION DATE	

Tekla structures

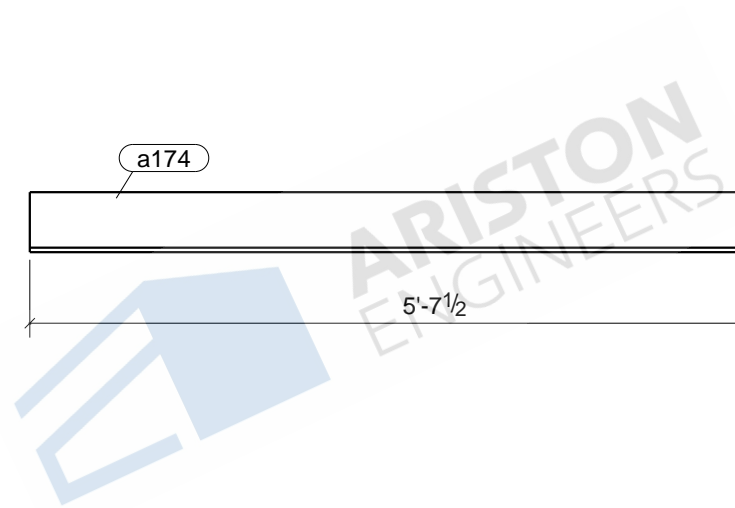
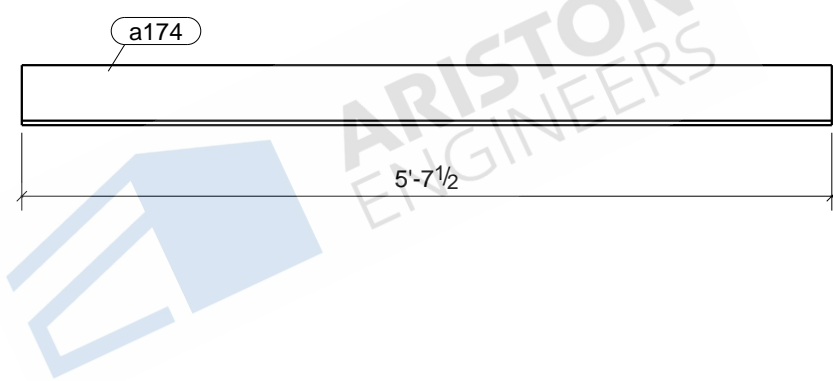


1	FR16
1	FR17
1	FR18
1	FR19
1	FR20
1	FR21
1	FR22
1	FR23
1	FR24
1	FR25
1	FR26
1	FR27
Qty.	In Assembly

a173	L5X3X3/8	A36	12	5'-4 1/2"	1038	52	
MARK	SIZE	GRADE	QTY.	LENGTH	AREA	WEIGHT	
MATERIAL LIST FOR WORKSHOP					TOTALS	12453 in ²	628 lb/ft

	DRAWING No.		a173		
	JOB No.		DESCRIPTION	ANGLE	
	DRAWN BY	NSP	REVISION No.		
	DATE DRAWN		REVISION DATE		

Tekla structures

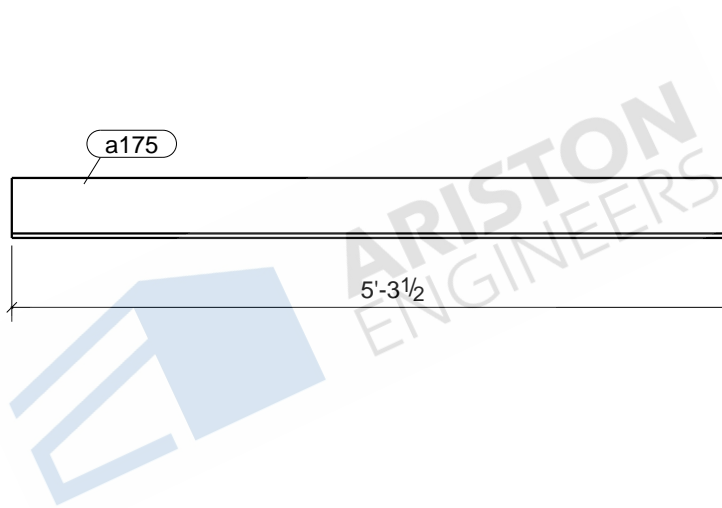
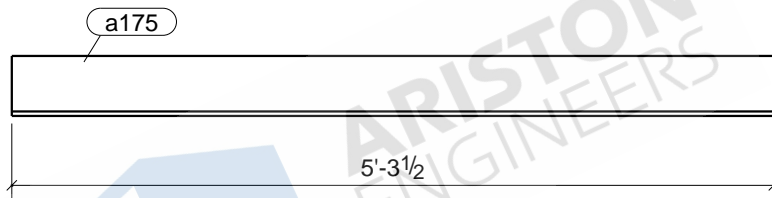


1	FR28
1	FR29
Qty.	In Assembly

a174	L5X3X3/8	A36	2	5'-7 1/2"	1086	55	
MARK	SIZE	GRADE	QTY.	LENGTH	AREA	WEIGHT	
MATERIAL LIST FOR WORKSHOP					TOTALS	2171 in ²	109 lb/ft

		DRAWING No.		a174	
		JOB No.		DESCRIPTION	
		DRAWN BY		REVISION No.	
		DATE DRAWN		REVISION DATE	
		NSP			

Tekla structures

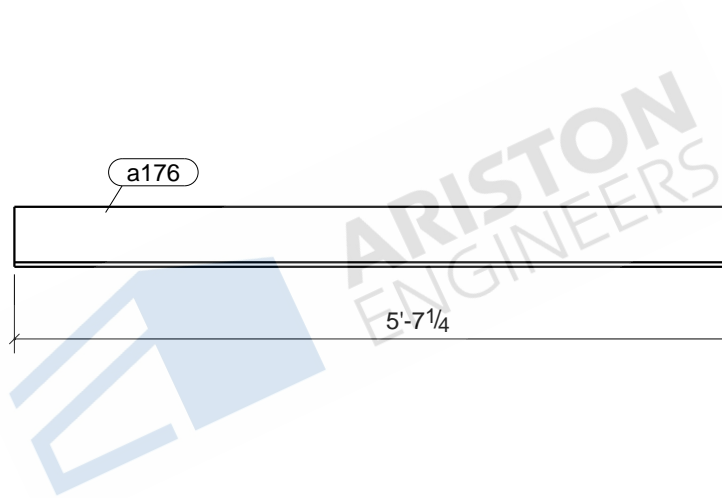
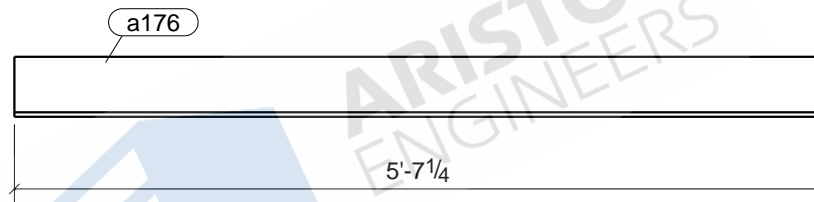


1	FR30
1	FR31
Qty.	In Assembly

a175	L5X3X3/8	A36	2	5'-3 1/2"	1022	52	
MARK	SIZE	GRADE	QTY.	LENGTH	AREA	WEIGHT	
MATERIAL LIST FOR WORKSHOP					TOTALS	2043 in ²	103 lb/ft

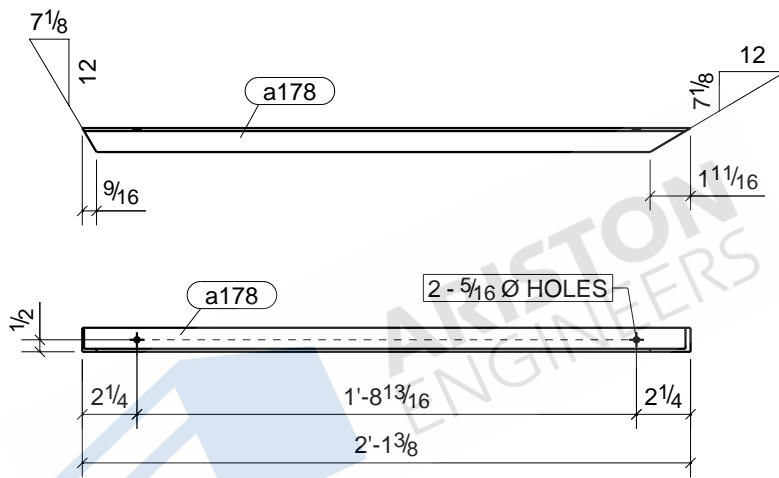
	DRAWING No.		a175			
	JOB No.		DESCRIPTION	ANGLE		
	DRAWN BY	NSP	REVISION No.			
	DATE DRAWN		REVISION DATE			

Tekla structures



						1	FR32
						Qty.	In Assembly
a176	L5X3X3/8	A36	1	5'-7 1/4"	1082	55	
MARK	SIZE	GRADE	QTY.	LENGTH	AREA	WEIGHT	
MATERIAL LIST FOR WORKSHOP					TOTALS	1082 in ²	55 lb/ft
			DRAWING No.		a176		
			JOB No.		DESCRIPTION	ANGLE	
			DRAWN BY		NSP	REVISION No.	
			DATE DRAWN			REVISION DATE	

Tekla structures

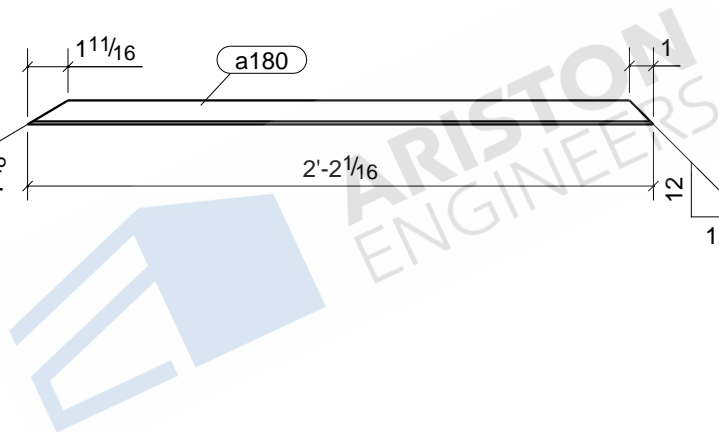
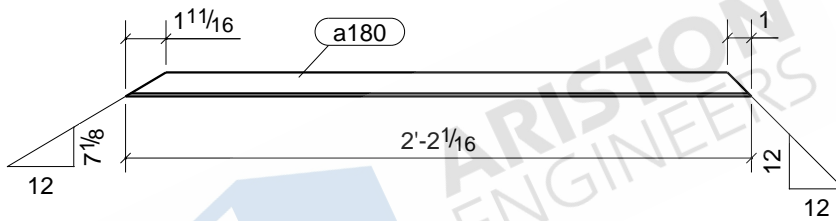


1	FR5
1	FR39
1	FR40
1	FR41
Qty.	In Assembly

a178	L1X1X1/8	A36	4	2'-1 3/8"	99	2	
MARK	SIZE	GRADE	QTY.	LENGTH	AREA	WEIGHT	
MATERIAL LIST FOR WORKSHOP					TOTALS	397 in ²	7 lb/ft

DRAWING No. **a178**

JOB No.		DESCRIPTION	ANGLE
DRAWN BY	NSP	REVISION No.	
DATE DRAWN		REVISION DATE	

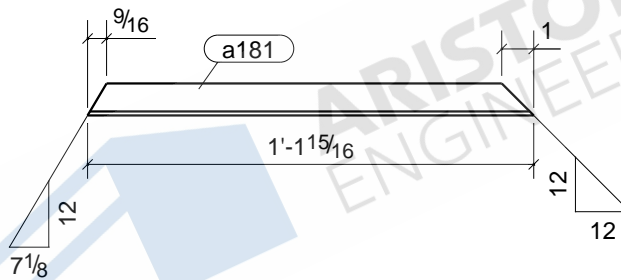


Tekla structures

1	DFR5
Qty.	In Assembly
	2

a180	L1X1X1/8	A36	1	2'-2 1/16"	102	2	
MARK	SIZE	GRADE	QTY.	LENGTH	AREA	WEIGHT	
MATERIAL LIST FOR WORKSHOP					TOTALS	102 in ²	2 lb/ft

DRAWING No.		a180	
JOB No.		DESCRIPTION	ANGLE
DRAWN BY	NSP	REVISION No.	
DATE DRAWN		REVISION DATE	

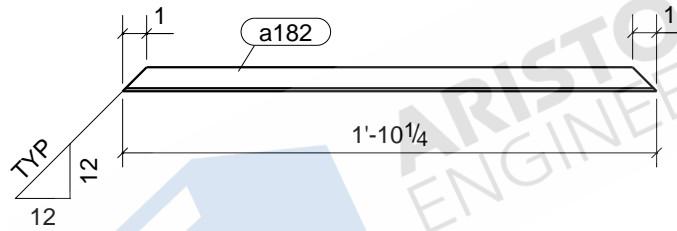


1	FR5
Qty.	In Assembly

a181	L1X1X1/8	A36	1	1'-1 15/16"	54	1	
MARK	SIZE	GRADE	QTY.	LENGTH	AREA	WEIGHT	
MATERIAL LIST FOR WORKSHOP					TOTALS	54 in ²	1 lb/ft

	DRAWING No.		a181		
	JOB No.		DESCRIPTION	ANGLE	
	DRAWN BY	NSP	REVISION No.		
	DATE DRAWN		REVISION DATE		

Tekla structures

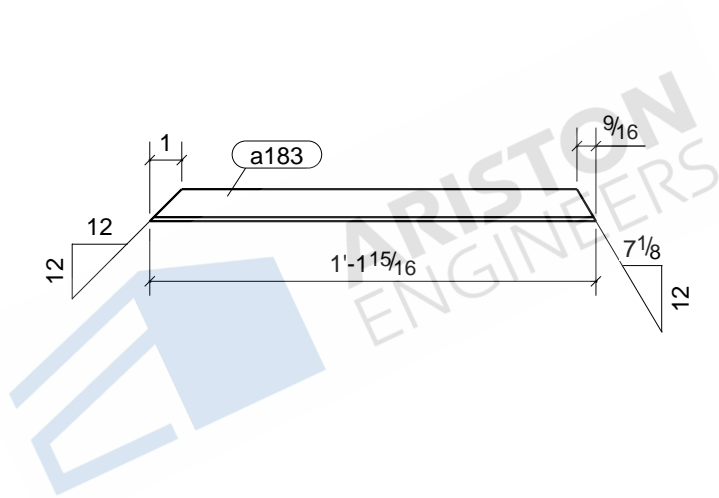
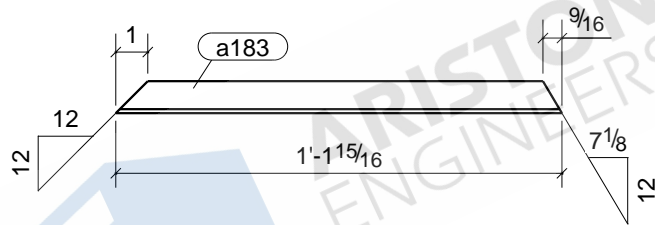


4	DFR1
1	DFR2
1	DFR3
1	DFR4
1	DFR5
Qty.	In Assembly

a182	L1X1X1/8	A36	8	1'-10 1/4"	87	1	
MARK	SIZE	GRADE	QTY.	LENGTH	AREA	WEIGHT	
MATERIAL LIST FOR WORKSHOP					TOTALS	698 in ²	12 lb/ft

DRAWING No. **a182**

JOB No.		DESCRIPTION	ANGLE
DRAWN BY	NSP	REVISION No.	
DATE DRAWN		REVISION DATE	

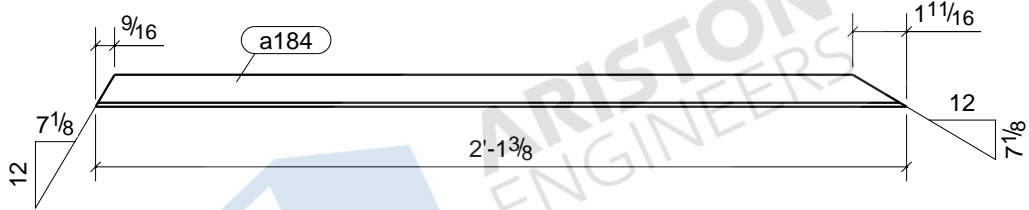


1	DFR5
Qty.	In Assembly

a183	L1X1X1/8	A36	1	1'-1 15/16"	54	1	
MARK	SIZE	GRADE	QTY.	LENGTH	AREA	WEIGHT	
MATERIAL LIST FOR WORKSHOP					TOTALS	54 in ²	1 lb/ft

DRAWING No. **a183**

JOB No.		DESCRIPTION	ANGLE
DRAWN BY	NSP	REVISION No.	
DATE DRAWN		REVISION DATE	

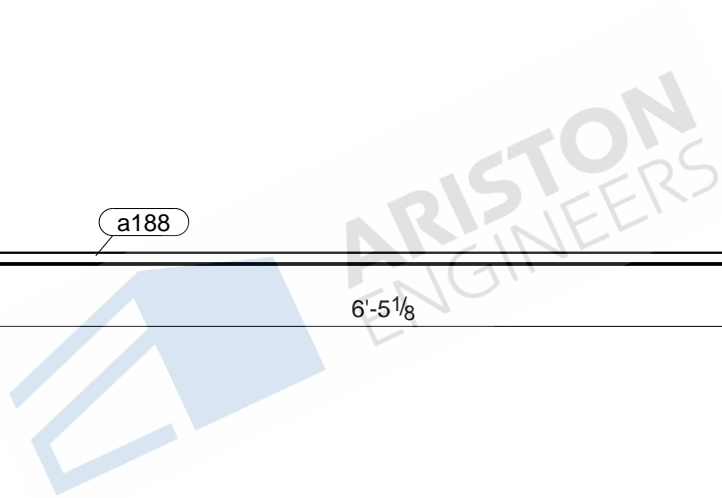
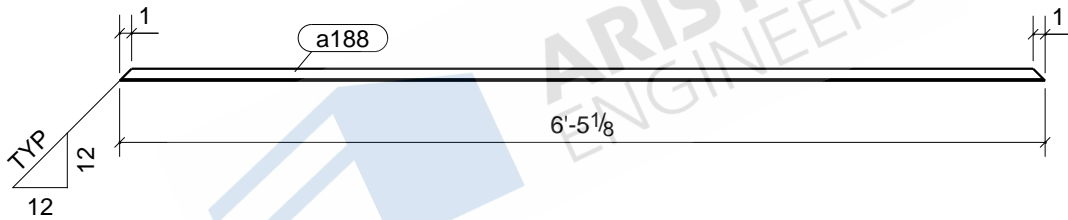


1	DFR2
1	DFR3
1	DFR4
1	DFR5
Qty.	In Assembly

a184	L1X1X1/8	A36	4	2'-1 3/8"	99	2	
MARK	SIZE	GRADE	QTY.	LENGTH	AREA	WEIGHT	
MATERIAL LIST FOR WORKSHOP					TOTALS	397 in ²	7 lb/ft

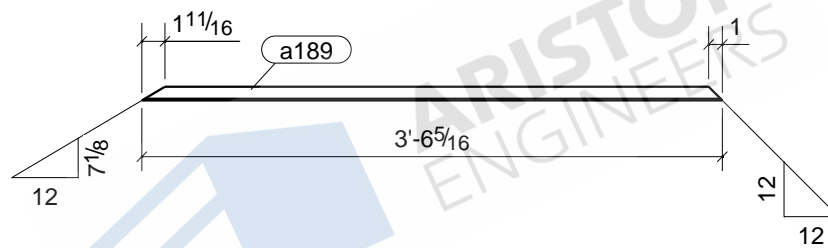
DRAWING No. **a184**

JOB No.		DESCRIPTION	ANGLE
DRAWN BY	NSP	REVISION No.	
DATE DRAWN		REVISION DATE	



						2	DFR1		
						Qty.	In Assembly		
a188	L1X1X1/8	A36	2	6'-5 1/8"	307	5			
MARK	SIZE	GRADE	QTY.	LENGTH	AREA	WEIGHT			
MATERIAL LIST FOR WORKSHOP					TOTALS	613 in ²	10 lb/ft		
				DRAWING No.		a188			
				JOB No.		DESCRIPTION		ANGLE	
				DRAWN BY		NSP		REVISION No.	
				DATE DRAWN				REVISION DATE	

Tekla structures

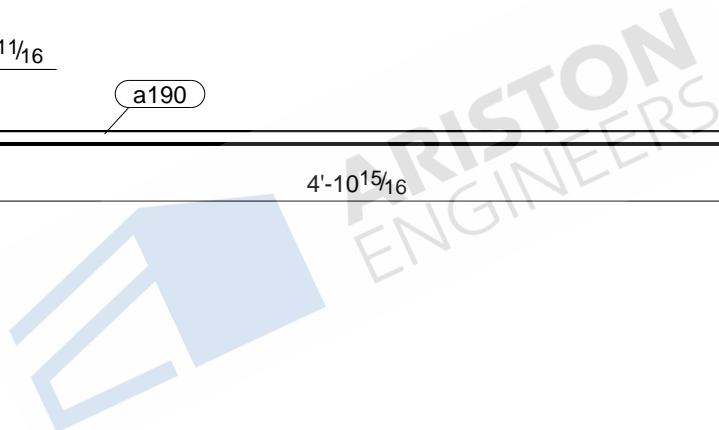
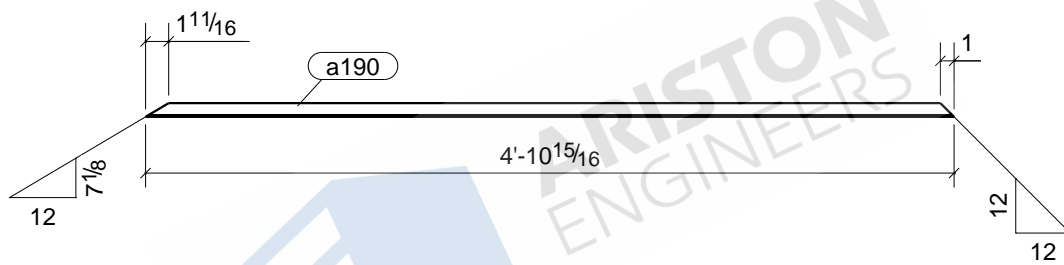


Tekla structures

1	DFR4
Qty.	In Assembly
	3

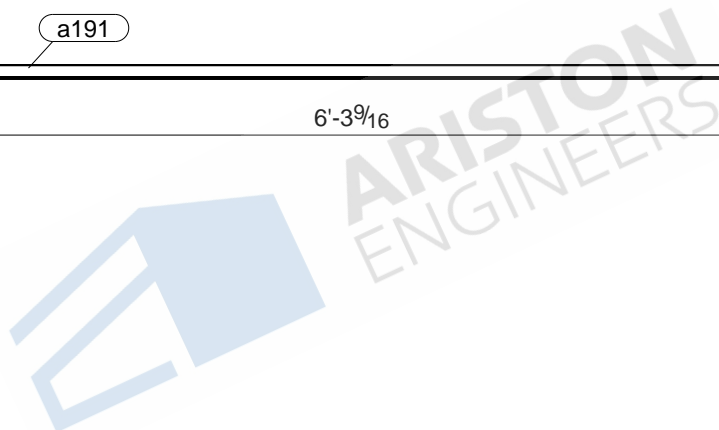
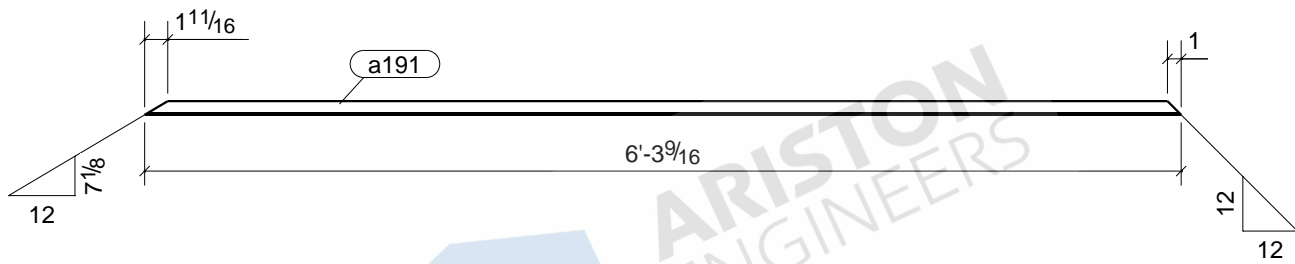
a189	L1X1X1/8	A36	1	3'-6 5/16"	167	3	
MARK	SIZE	GRADE	QTY.	LENGTH	AREA	WEIGHT	
MATERIAL LIST FOR WORKSHOP					TOTALS	167 in ²	3 lb/ft

DRAWING No.		a189	
JOB No.		DESCRIPTION	FRAME
DRAWN BY	NSP	REVISION No.	
DATE DRAWN		REVISION DATE	



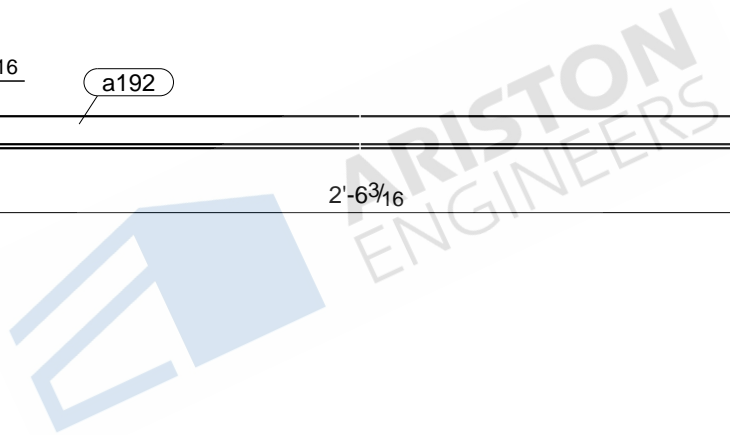
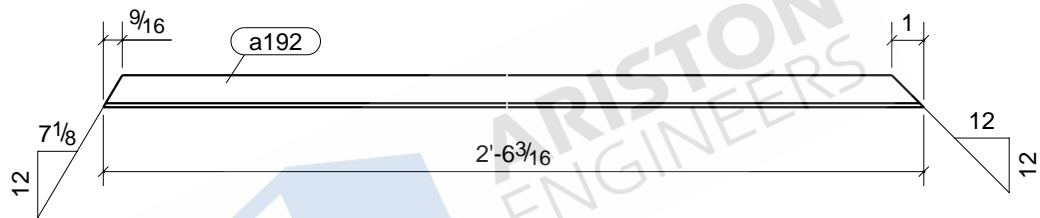
Tekla structures

						1	DFR3
						Qty.	In Assembly
a190	L1X1X1/8	A36	1	4'-10 15/16"	233	4	
MARK	SIZE	GRADE	QTY.	LENGTH	AREA	WEIGHT	
MATERIAL LIST FOR WORKSHOP					TOTALS	233 in ²	4 lb/ft
			DRAWING No.		a190		
			JOB No.	DESCRIPTION		FRAME	
			DRAWN BY	NSP	REVISION No.		
			DATE DRAWN	REVISION DATE			



						1	DFR2
						Qty.	In Assembly
a191	L1X1X1/8	A36	1	6'-3 9/16"	300	5	
MARK	SIZE	GRADE	QTY.	LENGTH	AREA	WEIGHT	
MATERIAL LIST FOR WORKSHOP					TOTALS	300 in ²	5 lb/ft
			DRAWING No.		a191		
			JOB No.		DESCRIPTION		FRAME
			DRAWN BY		REVISION No.		
			DATE DRAWN		REVISION DATE		

Tekla structures

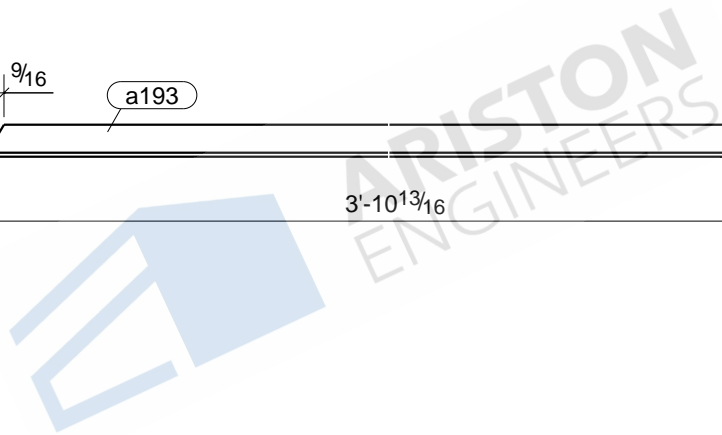
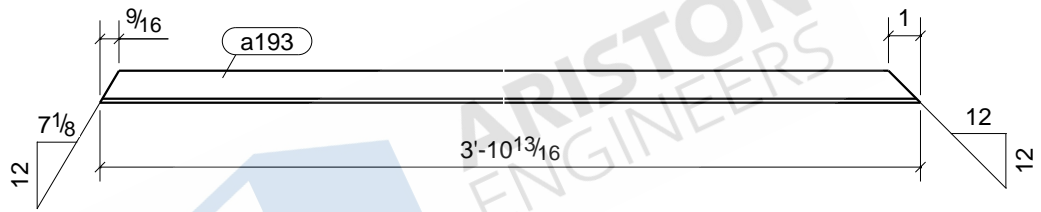


1	FR41
Qty.	In Assembly

a192	L1X1X1/8	A36	1	2'-6 3/16"	119	2	
MARK	SIZE	GRADE	QTY.	LENGTH	AREA	WEIGHT	
MATERIAL LIST FOR WORKSHOP					TOTALS	119 in ²	2 lb/ft

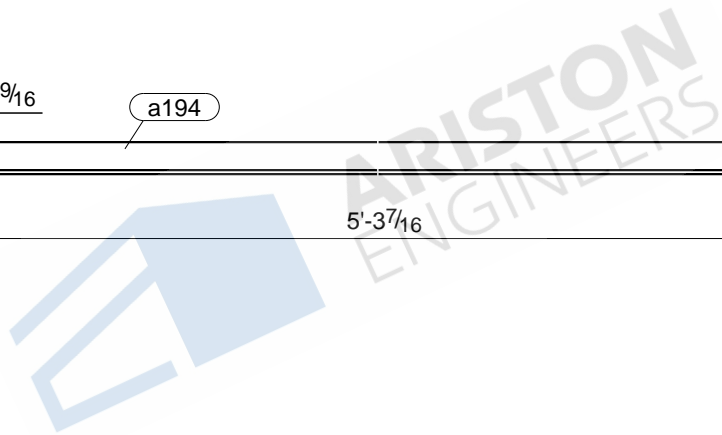
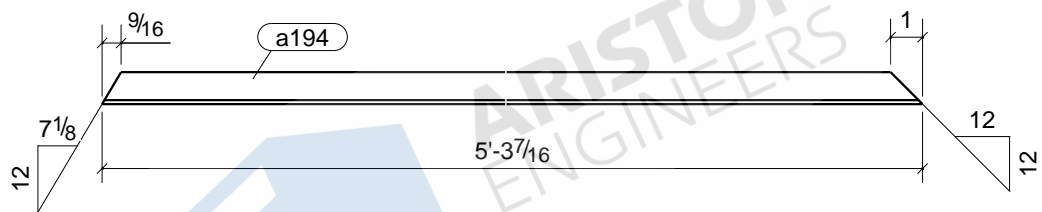
Tekla structures

DRAWING No.		a192	
JOB No.		DESCRIPTION	ANGLE
DRAWN BY	NSP	REVISION No.	
DATE DRAWN		REVISION DATE	



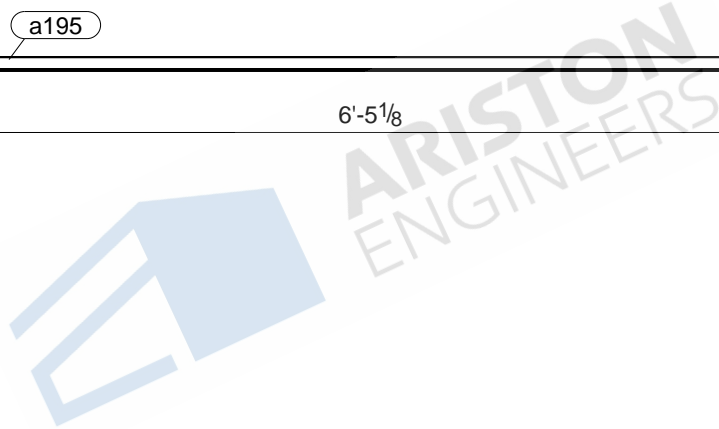
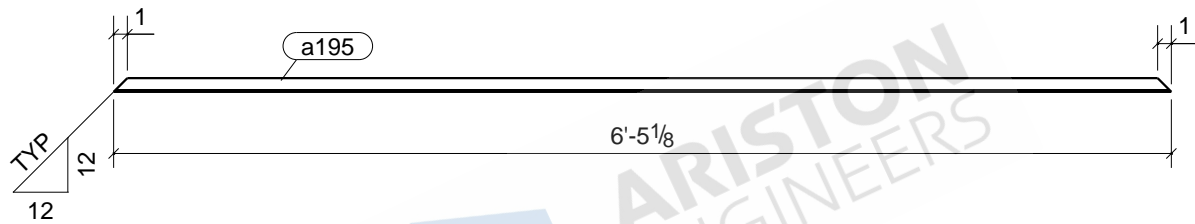
						1	FR40
						Qty.	In Assembly
a193	L1X1X1/8	A36	1	3'-10 13/16"	186	3	
MARK	SIZE	GRADE	QTY.	LENGTH	AREA	WEIGHT	
MATERIAL LIST FOR WORKSHOP					TOTALS	186 in ²	3 lb/ft
				DRAWING No.	a193		
				JOB No.		DESCRIPTION	ANGLE
				DRAWN BY	NSP	REVISION No.	
				DATE DRAWN		REVISION DATE	

Tekla structures



						1	FR39
						Qty.	In Assembly
a194	L1X1X1/8	A36	1	5'-3 7/16"	252	4	
MARK	SIZE	GRADE	QTY.	LENGTH	AREA	WEIGHT	
MATERIAL LIST FOR WORKSHOP					TOTALS	252 in ²	4 lb/ft
			DRAWING No.		a194		
			JOB No.		DESCRIPTION	ANGLE	
			DRAWN BY	NSP	REVISION No.		
			DATE DRAWN		REVISION DATE		

Tekla structures

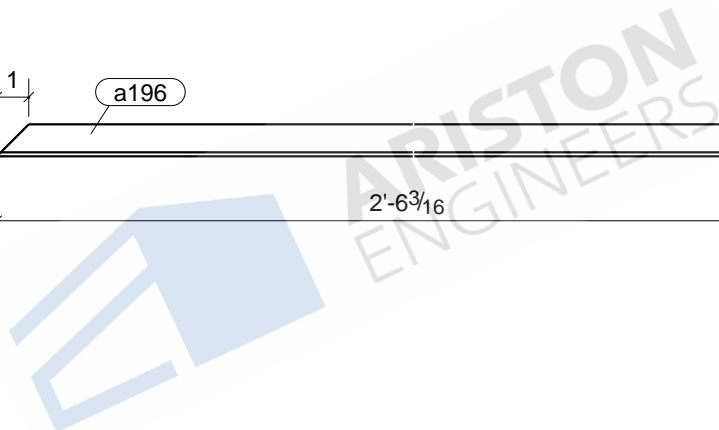
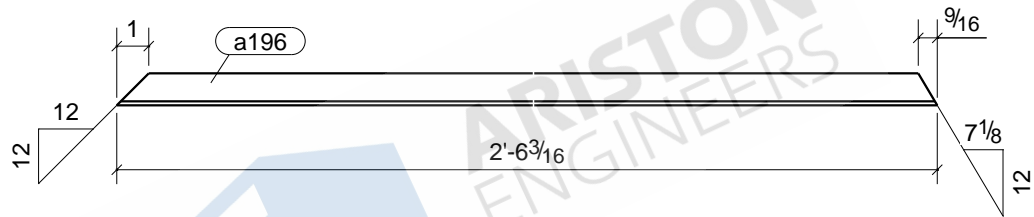


2	DFR1
1	FR34
1	FR38
Qty.	In Assembly

a195	L1X1X1/8	A36	4	6'-5 1/8"	307	5	
MARK	SIZE	GRADE	QTY.	LENGTH	AREA	WEIGHT	
MATERIAL LIST FOR WORKSHOP					TOTALS	1227 in ²	20 lb/ft

DRAWING No.		a195	
JOB No.		DESCRIPTION	ANGLE
DRAWN BY	NSP	REVISION No.	
DATE DRAWN		REVISION DATE	

Tekla structures

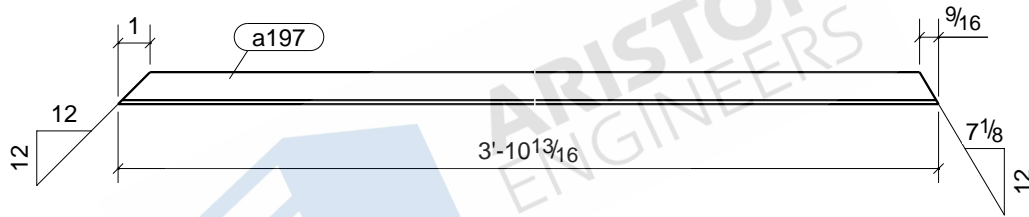


1	DFR4
Qty.	In Assembly
2	2
119 in ²	2 lb/ft

a196	L1X1X1/8	A36	1	2'-6 3/16"	119	2
MARK	SIZE	GRADE	QTY.	LENGTH	AREA	WEIGHT
MATERIAL LIST FOR WORKSHOP					TOTALS	

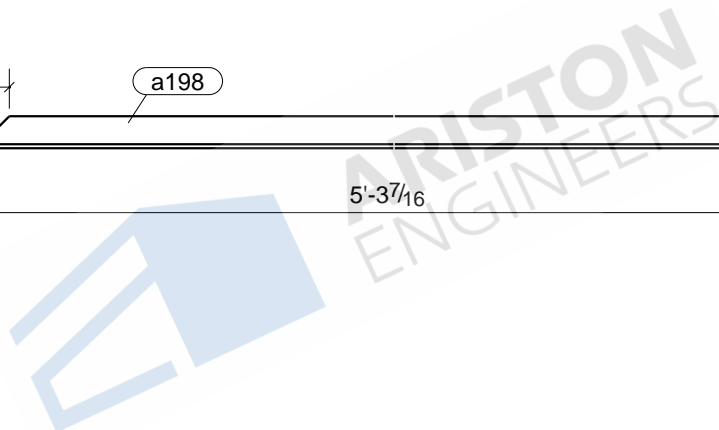
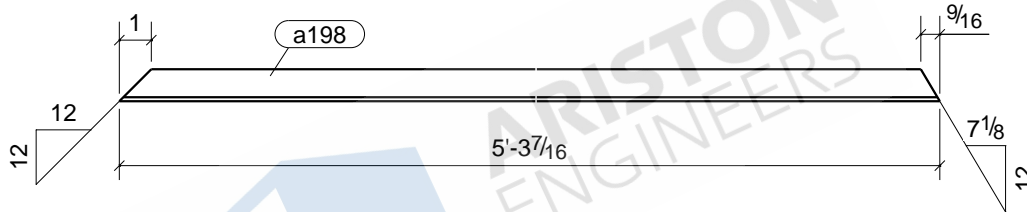
DRAWING No.		a196	
JOB No.		DESCRIPTION	ANGLE
DRAWN BY	NSP	REVISION No.	
DATE DRAWN		REVISION DATE	

Tekla structures



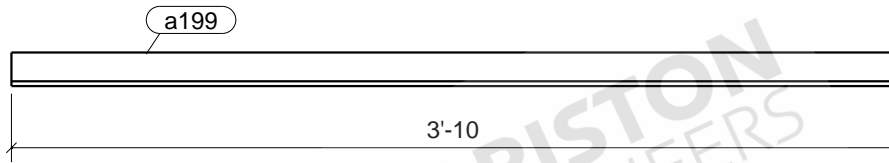
Tekla structures

						1	DFR3
						Qty.	In Assembly
a197	L1X1X1/8	A36	1	3'-10 13/16"	186	3	
MARK	SIZE	GRADE	QTY.	LENGTH	AREA	WEIGHT	
MATERIAL LIST FOR WORKSHOP					TOTALS	186 in ²	3 lb/ft
				DRAWING No.	a197		
				JOB No.		DESCRIPTION	ANGLE
				DRAWN BY	NSP	REVISION No.	
				DATE DRAWN		REVISION DATE	



						1	DFR2	
						Qty.	In Assembly	
a198	L1X1X1/8	A36	1	5'-3 7/16"	252	4		
MARK	SIZE	GRADE	QTY.	LENGTH	AREA	WEIGHT		
MATERIAL LIST FOR WORKSHOP					TOTALS	252 in ²	4 lb/ft	
			DRAWING No.		a198			
			JOB No.		DESCRIPTION		ANGLE	
			DRAWN BY		NSP	REVISION No.		
			DATE DRAWN			REVISION DATE		

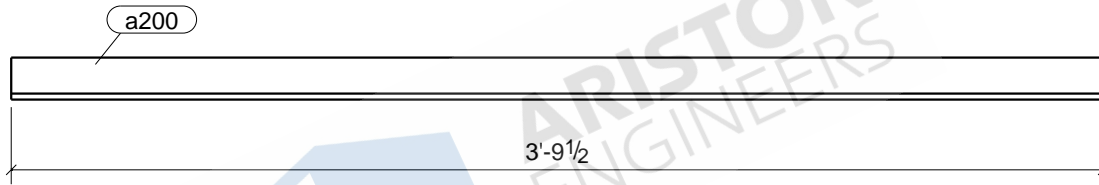
Tekla structures



ARISTON
ENGINEERS

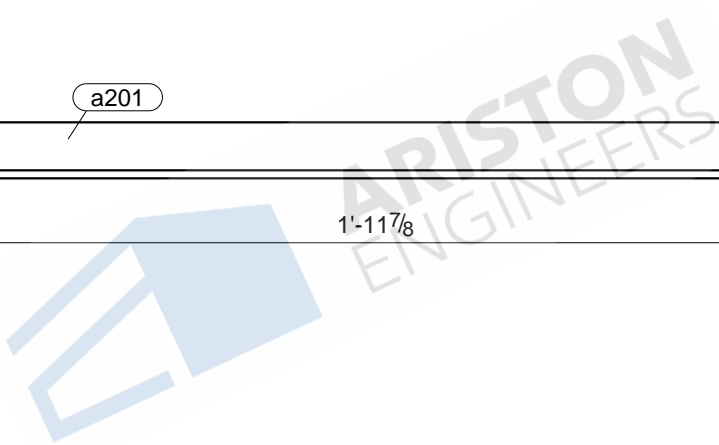
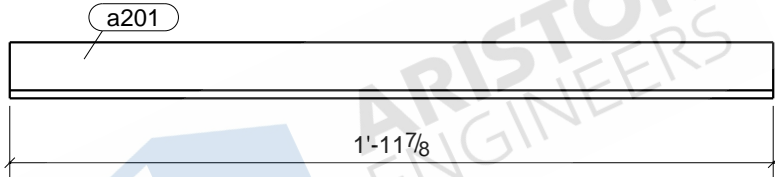
						1	FR37
						Qty.	In Assembly
a199	L1-3/4X1-3/4X1/4	A36	1	3'-10"	324	11	
MARK	SIZE	GRADE	QTY.	LENGTH	AREA	WEIGHT	
MATERIAL LIST FOR WORKSHOP					TOTALS	324 in ²	11 lb/ft
			DRAWING No.		a199		
			JOB No.		DESCRIPTION		ANGLE
			DRAWN BY		REVISION No.		
			DATE DRAWN		REVISION DATE		

Tekla structures



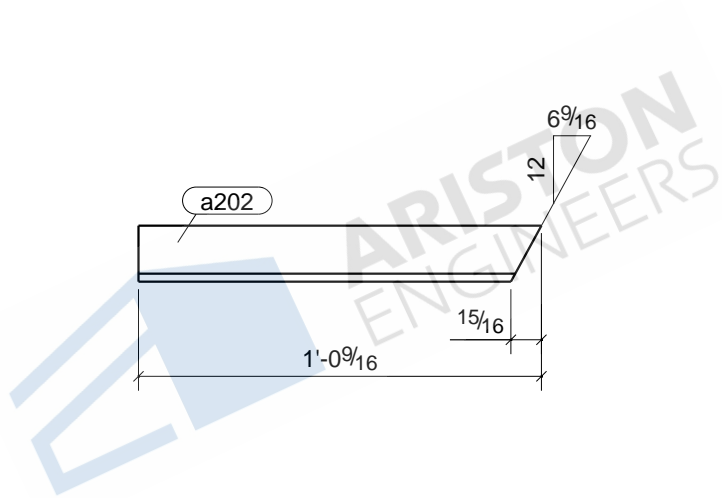
						1	FR36	
						Qty.	In Assembly	
a200	L1-3/4X1-3/4X1/4	A36	1	3'-9 1/2"		320	10	
MARK	SIZE	GRADE	QTY.	LENGTH		AREA	WEIGHT	
MATERIAL LIST FOR WORKSHOP						TOTALS	320 in ²	10 lb/ft
			DRAWING No.		a200			
			JOB No.		DESCRIPTION		ANGLE	
			DRAWN BY		NSP	REVISION No.		
			DATE DRAWN			REVISION DATE		

Tekla structures



						1	FR36	
						Qty.	In Assembly	
a201	L1-3/4X1-3/4X1/4	A36	1	1'-11 7/8"	169	6		
MARK	SIZE	GRADE	QTY.	LENGTH	AREA	WEIGHT		
MATERIAL LIST FOR WORKSHOP					TOTALS	169 in ²	6 lb/ft	
			DRAWING No.		a201			
			JOB No.		DESCRIPTION		ANGLE	
			DRAWN BY		NSP	REVISION No.		
			DATE DRAWN			REVISION DATE		

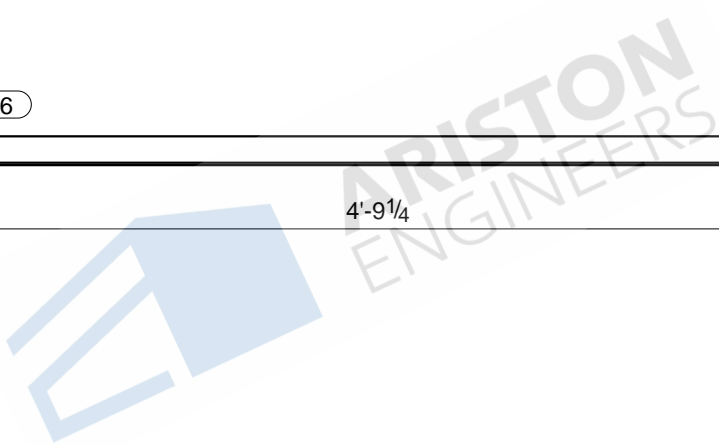
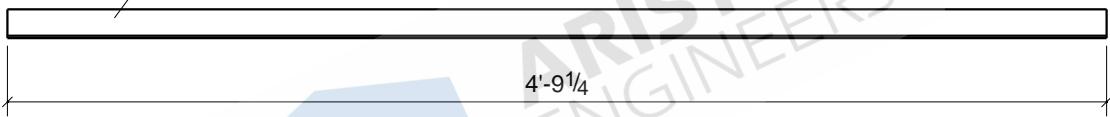
Tekla structures



Tekla structures

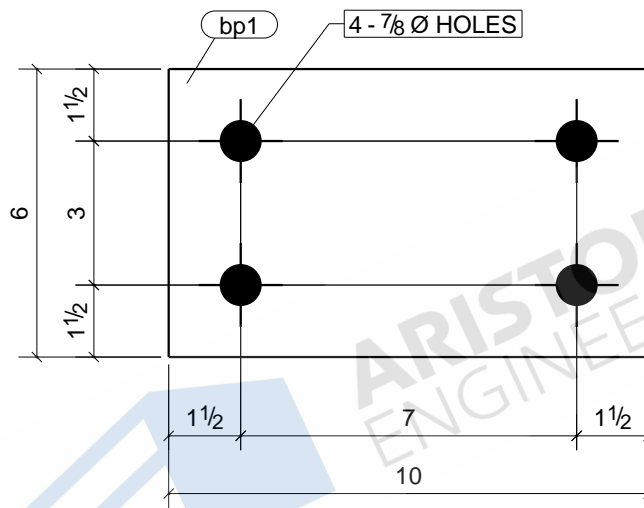
						1	FR36
						Qty.	In Assembly
a202	L1-3/4X1-3/4X1/4	A36	1	1'-0 9/16"	85	3	
MARK	SIZE	GRADE	QTY.	LENGTH	AREA	WEIGHT	
MATERIAL LIST FOR WORKSHOP					TOTALS	85 in ²	3 lb/ft
			DRAWING No.		a202		
			JOB No.		DESCRIPTION	ANGLE	
			DRAWN BY	NSP	REVISION No.		
			DATE DRAWN		REVISION DATE		

a206



						12	M27
						Qty.	In Assembly
a206	L1-1/2X1-1/2X1/8	A36	12	4'-9 1/4"	344	9	
MARK	SIZE	GRADE	QTY.	LENGTH	AREA	WEIGHT	
MATERIAL LIST FOR WORKSHOP					TOTALS	4131 in ²	103 lb/ft
			DRAWING No.		a206		
			JOB No.		DESCRIPTION	ANGLE	
			DRAWN BY		NSP	REVISION No.	
			DATE DRAWN			REVISION DATE	

Tekla structures

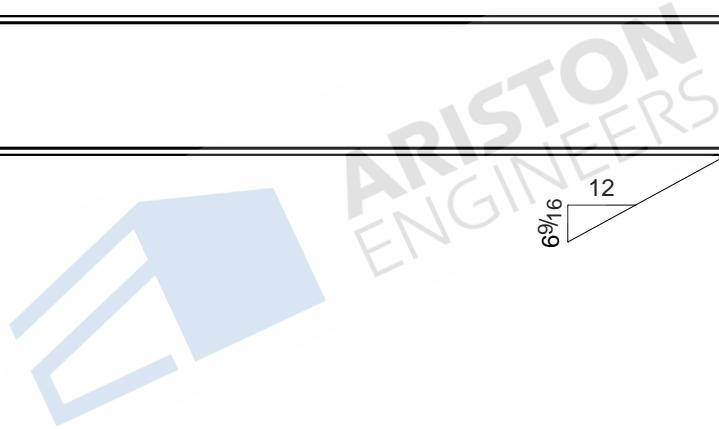
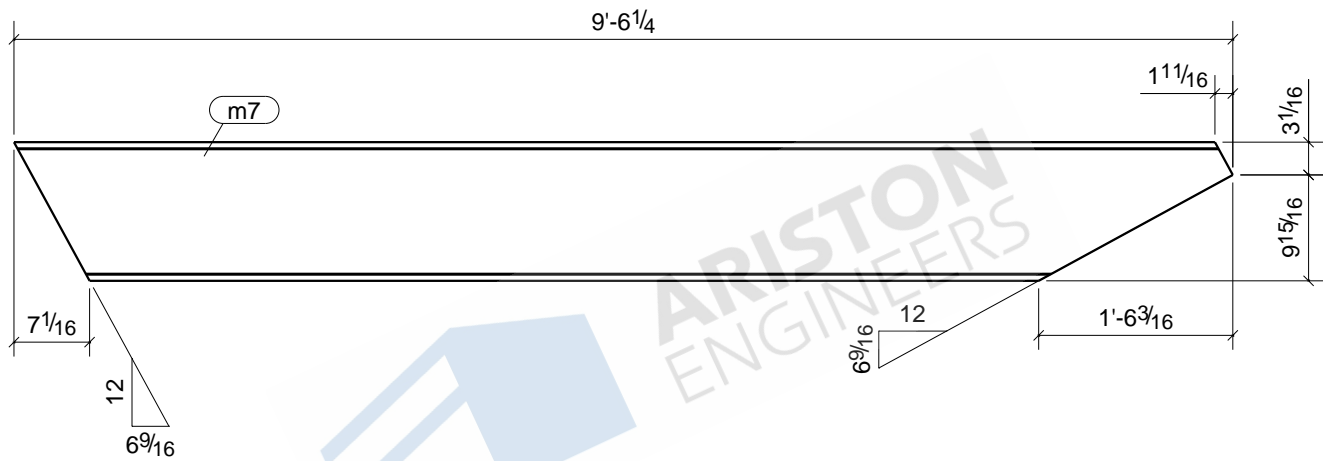


1	SC7
1	SC8
Qty.	In Assembly

bp1	FB3/4"X6"	A36	2	0'-10"	144	13	
MARK	SIZE	GRADE	QTY.	LENGTH	AREA	WEIGHT	
MATERIAL LIST FOR WORKSHOP					TOTALS	288 in ²	26 lb/ft

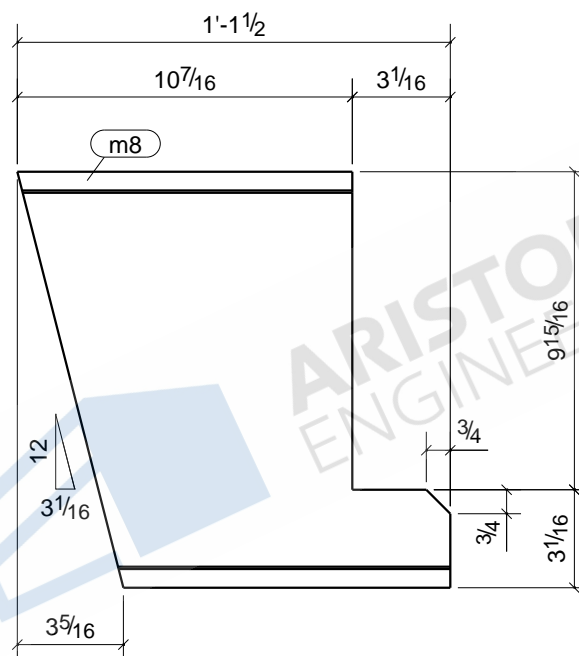
DRAWING No. **bp1**

JOB No.		DESCRIPTION	BASE PLATE
DRAWN BY	NSP	REVISION No.	
DATE DRAWN		REVISION DATE	



						1	ST9
						Qty.	In Assembly
m7	MC13X31.8	A36	1	9'-6 1/4"	4248	303	
MARK	SIZE	GRADE	QTY.	LENGTH	AREA	WEIGHT	
MATERIAL LIST FOR WORKSHOP					TOTALS	4248 in ²	303 lb/ft
			DRAWING No.		m7		
			JOB No.		DESCRIPTION	STRINGER	
			DRAWN BY		NSP	REVISION No.	
			DATE DRAWN			REVISION DATE	

Tekla structures



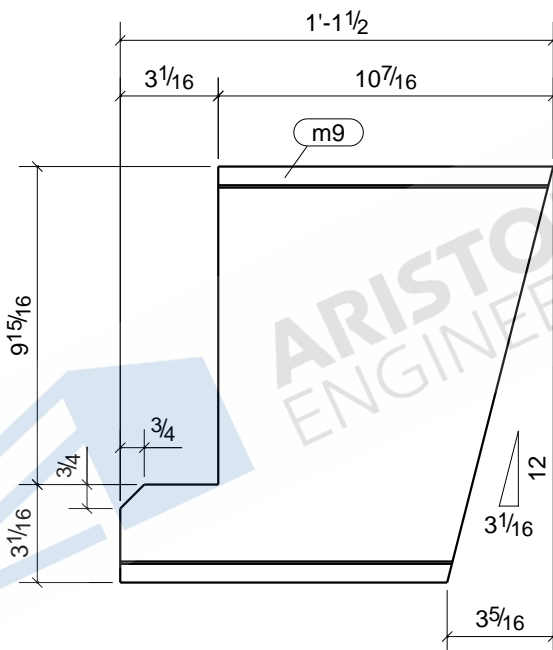
ARISTON ENGINEERS

1	ST8
Qty.	In Assembly

m8	MC13X31.8	A36	1	1'-1 1/2"	424	36	
MARK	SIZE	GRADE	QTY.	LENGTH	AREA	WEIGHT	
MATERIAL LIST FOR WORKSHOP					TOTALS	424 in ²	36 lb/ft

DRAWING No.		m8	
JOB No.		DESCRIPTION	STRINGER
DRAWN BY	NSP	REVISION No.	
DATE DRAWN		REVISION DATE	

Tekla structures

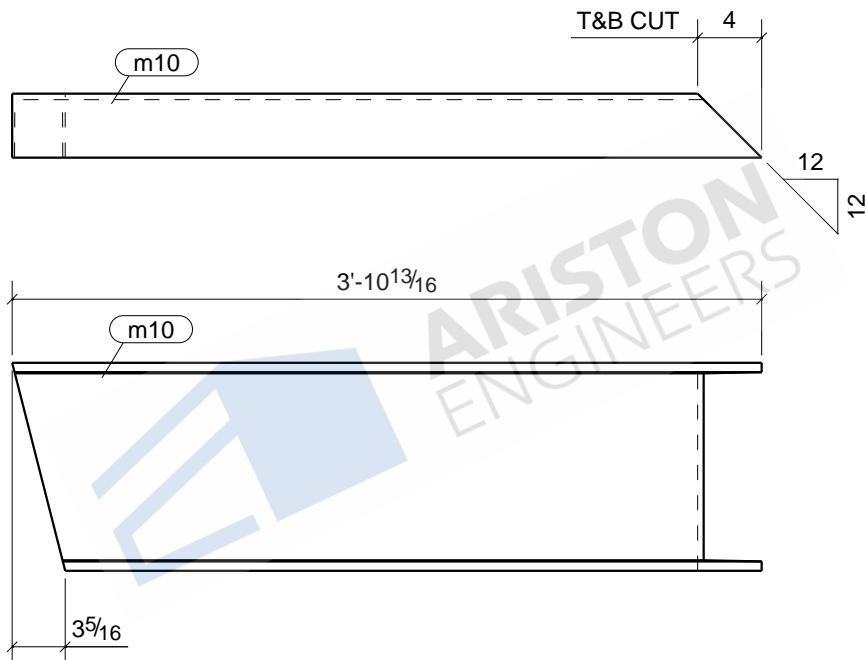


1	ST8
Qty.	In Assembly

m9	MC13X31.8	A36	1	1'-1 1/2"	424	36	
MARK	SIZE	GRADE	QTY.	LENGTH	AREA	WEIGHT	
MATERIAL LIST FOR WORKSHOP					TOTALS	424 in ²	36 lb/ft

DRAWING No. **m9**

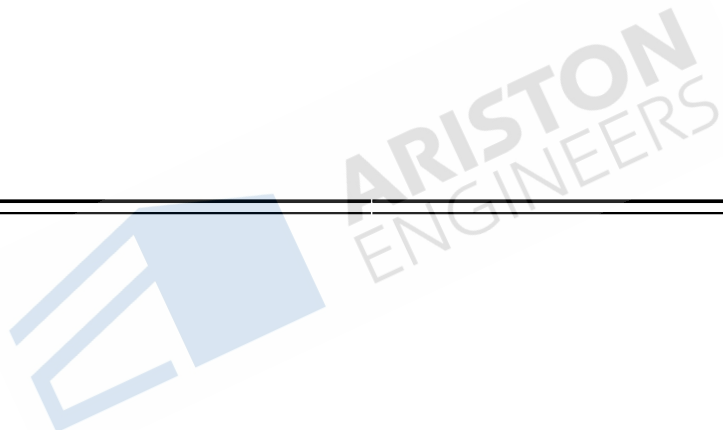
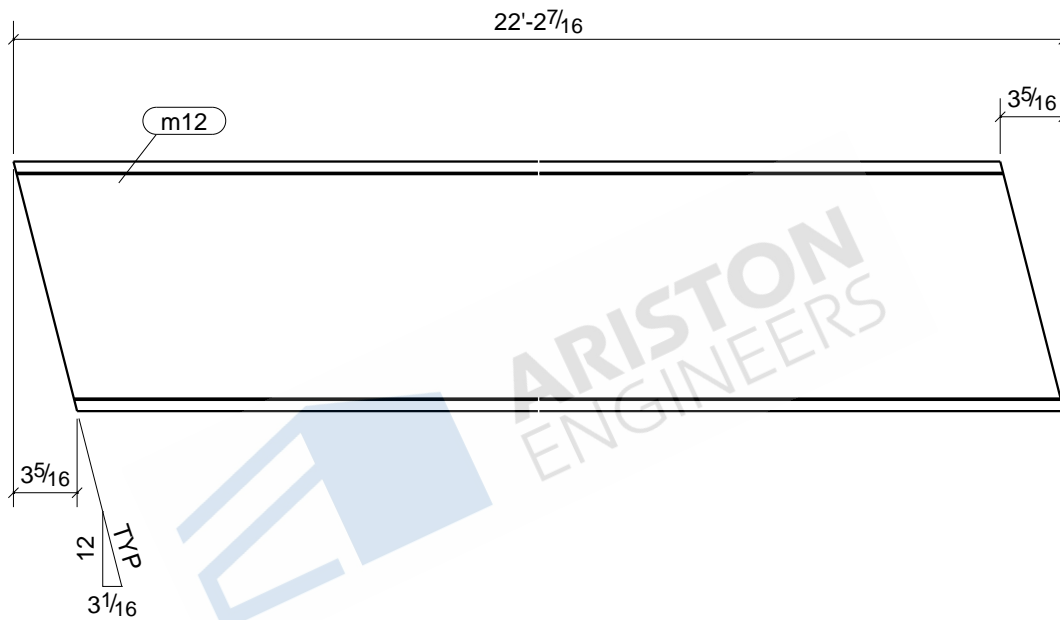
JOB No.		DESCRIPTION	STRINGER
DRAWN BY	NSP	REVISION No.	
DATE DRAWN		REVISION DATE	



1	ST9
Qty.	In Assembly
	124
TOTALS	
1757 in ²	124 lb/ft

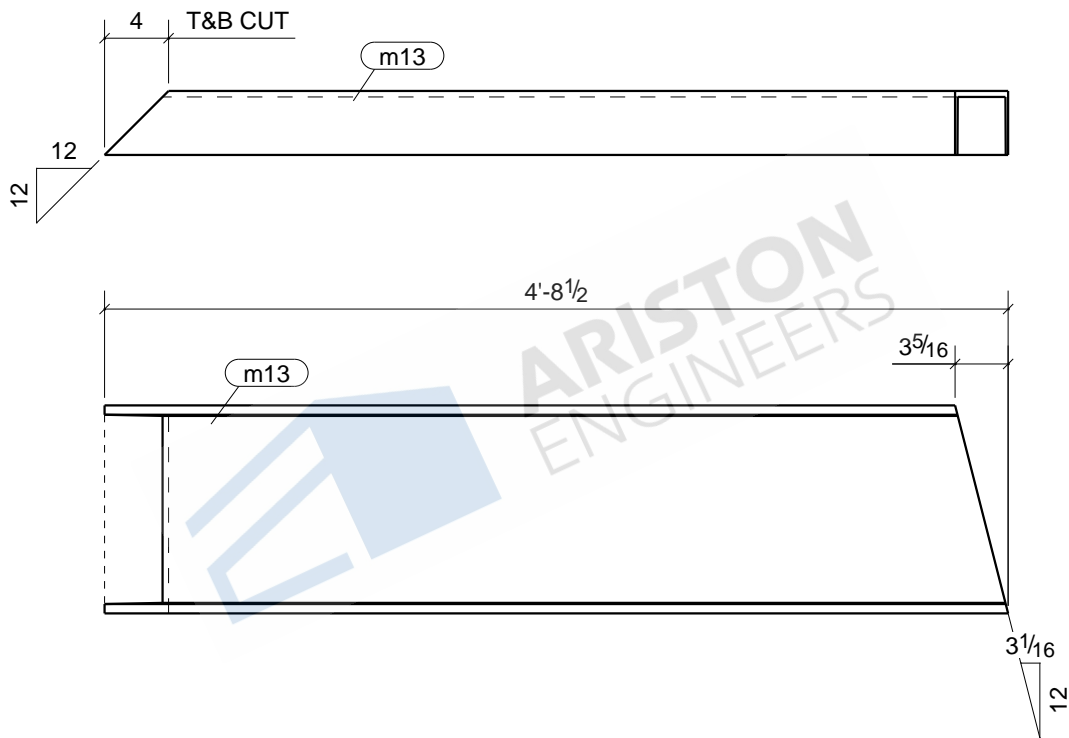
m10	MC13X31.8	A36	1	3'-10 13/16"	1757	124
MARK	SIZE	GRADE	QTY.	LENGTH	AREA	WEIGHT
MATERIAL LIST FOR WORKSHOP					TOTALS	
				DRAWING No.	m10	
				JOB No.	DESCRIPTION	STRINGER
				DRAWN BY	NSP	REVISION No.
				DATE DRAWN	REVISION DATE	

Tekla structures



Tekla structures

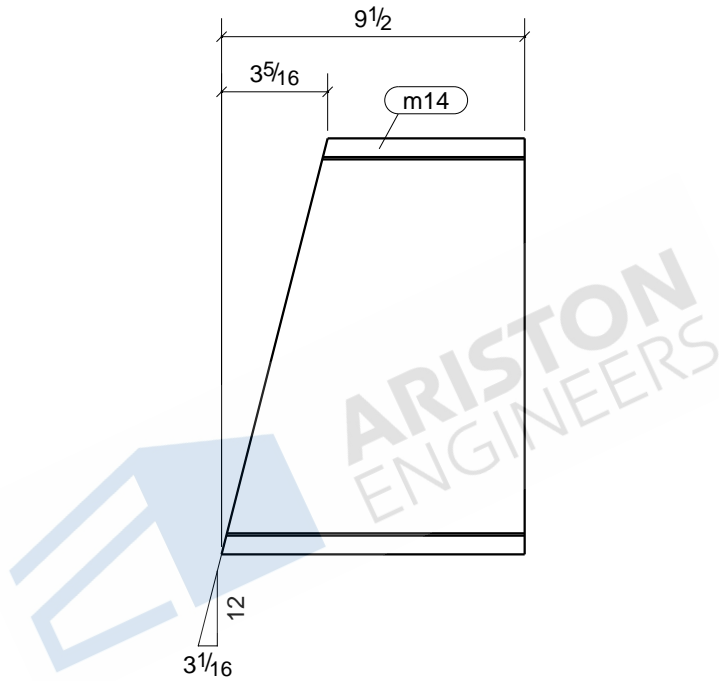
						1	ST8
						Qty.	In Assembly
m12	MC13X31.8	A36	1	22'-2 7/16"	10836	707	
MARK	SIZE	GRADE	QTY.	LENGTH	AREA	WEIGHT	
MATERIAL LIST FOR WORKSHOP					TOTALS	10836 in ²	707 lb/ft
				DRAWING No.	m12		
				JOB No.		DESCRIPTION	STRINGER
				DRAWN BY	NSP	REVISION No.	
				DATE DRAWN		REVISION DATE	



						1	ST8
						Qty.	In Assembly
m13	MC13X31.8	A36	1	4'-8 1/2"	2153	150	
MARK	SIZE	GRADE	QTY.	LENGTH	AREA	WEIGHT	
MATERIAL LIST FOR WORKSHOP					TOTALS	2153 in ²	150 lb/ft

DRAWING No. **m13**

JOB No.		DESCRIPTION	STRINGER
DRAWN BY	NSP	REVISION No.	
DATE DRAWN		REVISION DATE	

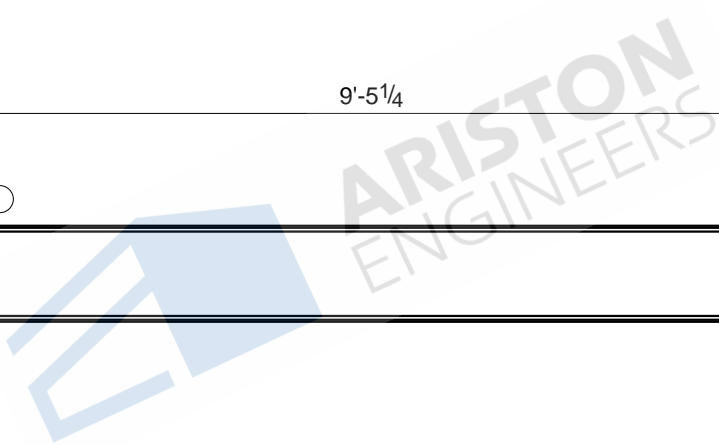
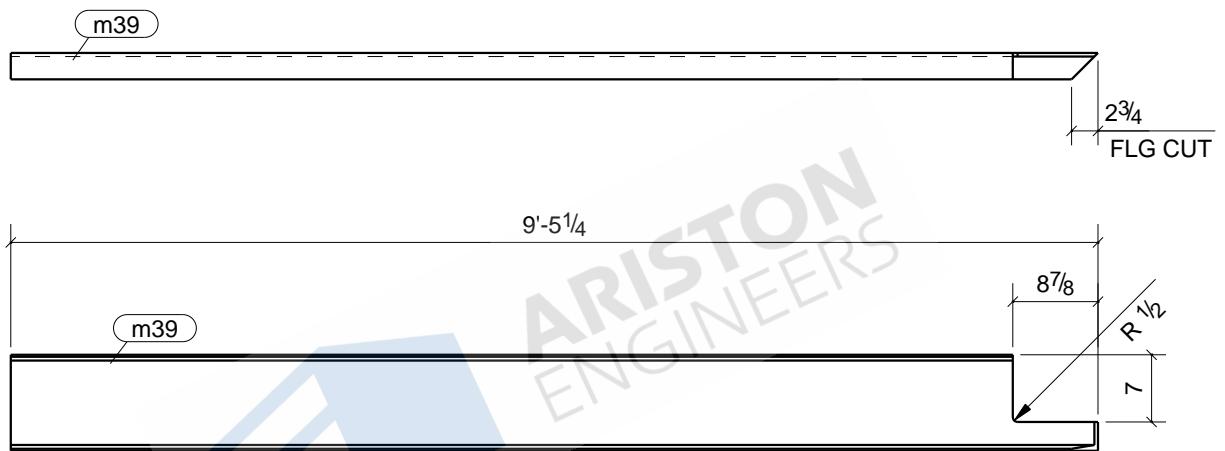


1	ST8
Qty.	In Assembly

m14	MC13X31.8	A36	1	0'-9 1/2"	340	25	
MARK	SIZE	GRADE	QTY.	LENGTH	AREA	WEIGHT	
MATERIAL LIST FOR WORKSHOP					TOTALS	340 in ²	25 lb/ft

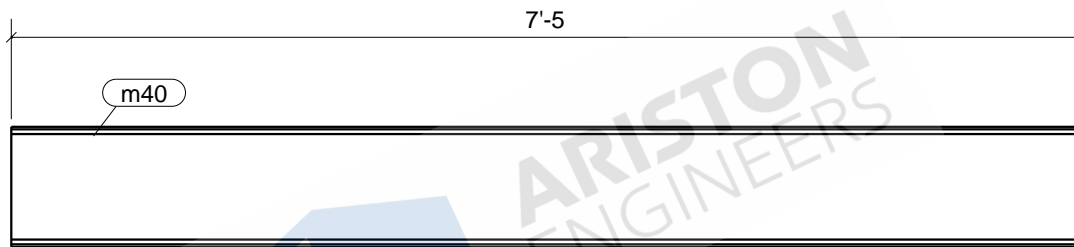
		DRAWING No. m14	
		JOB No.	DESCRIPTION
		DRAWN BY	REVISION No.
		DATE DRAWN	REVISION DATE
		NSP	STRINGER

Tekla structures



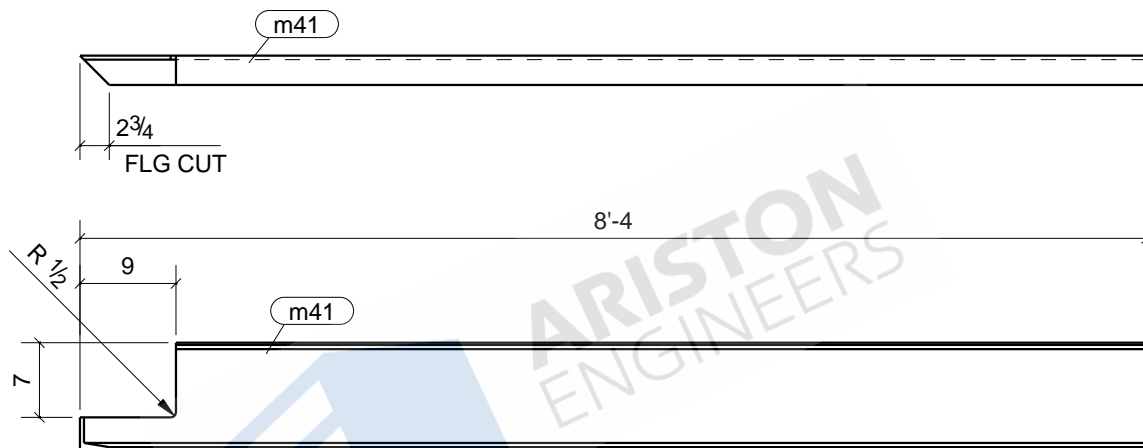
						1	B68
						Qty.	In Assembly
m39	C10X20	A36	1	9'-5 1/4"	3184	189	
MARK	SIZE	GRADE	QTY.	LENGTH	AREA	WEIGHT	
MATERIAL LIST FOR WORKSHOP					TOTALS	3184 in ²	189 lb/ft
			DRAWING No.		m39		
			JOB No.		DESCRIPTION		
			DRAWN BY		REVISION No.		
			DATE DRAWN		REVISION DATE		
			NSP				

Tekla structures



						1	B69	
						Qty.	In Assembly	
m40	C10X20	A36	1	7'-5"	2639	148		
MARK	SIZE	GRADE	QTY.	LENGTH	AREA	WEIGHT		
MATERIAL LIST FOR WORKSHOP					TOTALS	2639 in ²	148 lb/ft	
			DRAWING No.		m40			
			JOB No.		DESCRIPTION		BEAM	
			DRAWN BY		NSP	REVISION No.		
			DATE DRAWN			REVISION DATE		

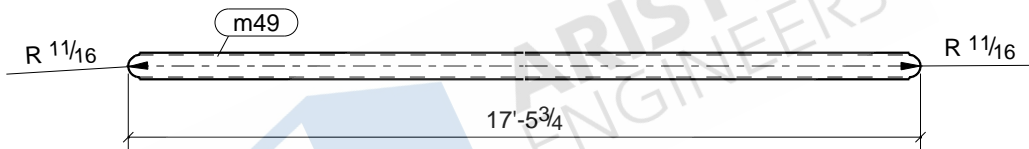
Tekla structures



ARISTON
ENGINEERS

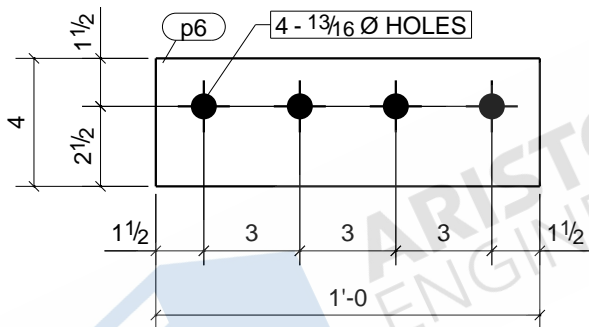
						1	B76			
						Qty.	In Assembly			
m41	C10X20	A36	1	8'-4"	2790	166				
MARK	SIZE	GRADE	QTY.	LENGTH	AREA	WEIGHT				
MATERIAL LIST FOR WORKSHOP					TOTALS	2790 in ²	166 lb/ft			
				DRAWING No.		m41				
				JOB No.		DESCRIPTION		BEAM		
				DRAWN BY		NSP		REVISION No.		
				DATE DRAWN				REVISION DATE		

Tekla structures



						1	LD1
						Qty.	In Assembly
m49	PIPE1-1/4SCH40	A53	1	17'-5 3/4"	1094	37	
MARK	SIZE	GRADE	QTY.	LENGTH	AREA	WEIGHT	
MATERIAL LIST FOR WORKSHOP					TOTALS	1094 in ²	37 lb/ft
			DRAWING No.		m49		
			JOB No.	DESCRIPTION		PIPE	
			DRAWN BY	NSP	REVISION No.		
			DATE DRAWN	REVISION DATE			

Tekla structures

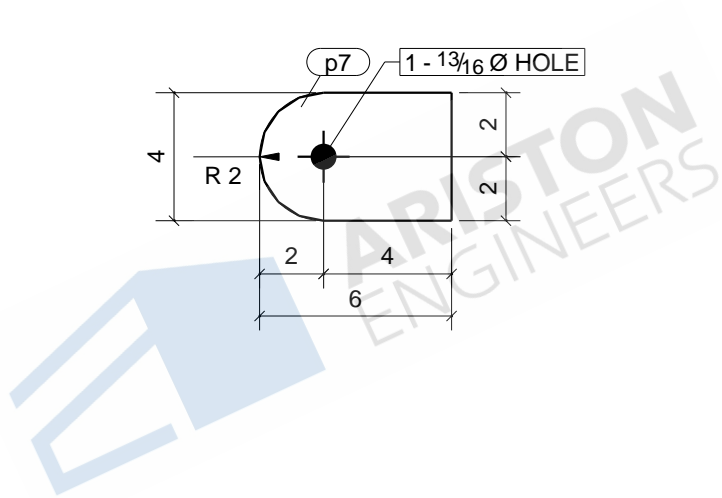
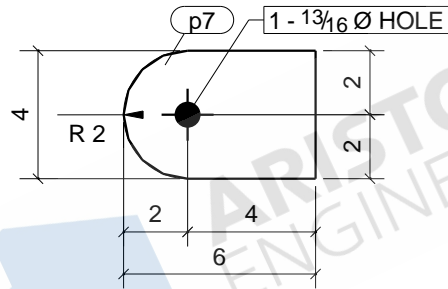


1	C2
1	C3
1	C4
2	C7
2	C8
1	C9
2	C11
1	C12
2	C14
1	C15
2	C21
1	C23
2	C24
1	C26
2	C30
1	C36
1	C46
1	C51
2	SC1
2	SC2
1	SC3
2	SC4
1	SC5
1	SC6
Qty.	In Assembly

p6	FB3/8"X4"	A36	34	1'-0"	108	5	
MARK	SIZE	GRADE	QTY.	LENGTH	AREA	WEIGHT	
MATERIAL LIST FOR WORKSHOP					TOTALS	3672 in ²	174 lb/ft

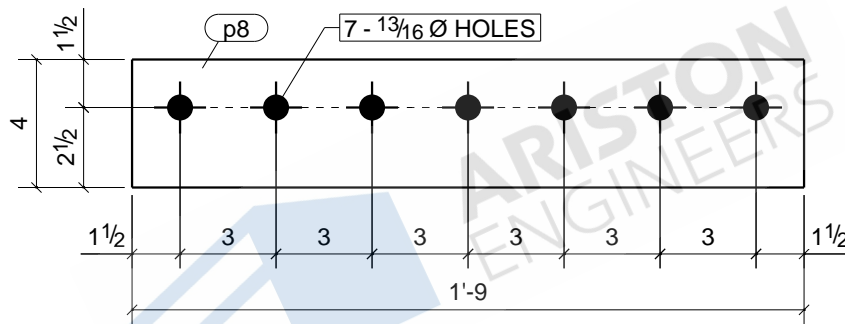
DRAWING No. **p6**

JOB No.		DESCRIPTION	PLATE
DRAWN BY	NSP	REVISION No.	
DATE DRAWN		REVISION DATE	



						2	C5
						Qty.	In Assembly
p7	FB3/8"X4"	A36	2	0'-6"	51	2	
MARK	SIZE	GRADE	QTY.	LENGTH	AREA	WEIGHT	
MATERIAL LIST FOR WORKSHOP					TOTALS	102 in ²	5 lb/ft
				DRAWING No.	p7		
				JOB No.		DESCRIPTION	PLATE
				DRAWN BY	NSP	REVISION No.	
				DATE DRAWN		REVISION DATE	

Tekla structures

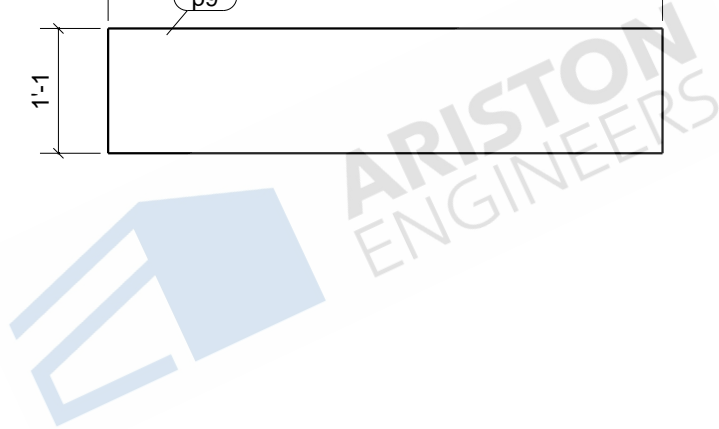
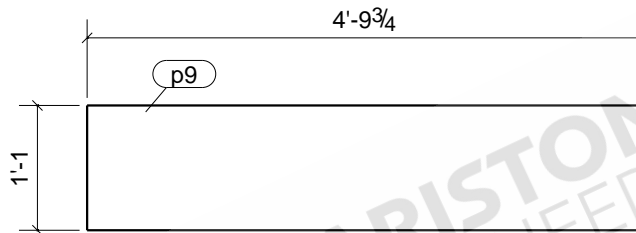


1	C31
1	C48
Qty.	In Assembly

p8	FB3/8"X4"	A36	2	1'-9"	187	9	
MARK	SIZE	GRADE	QTY.	LENGTH	AREA	WEIGHT	
MATERIAL LIST FOR WORKSHOP					TOTALS	374 in ²	18 lb/ft

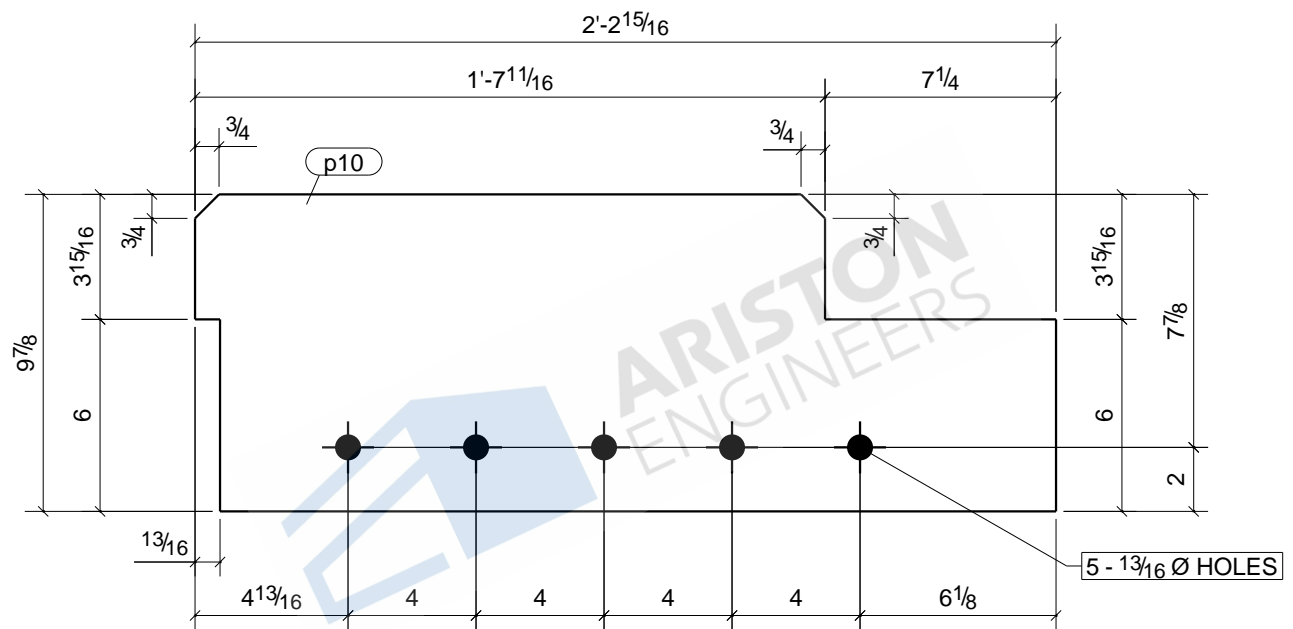
DRAWING No. **p8**

JOB No.		DESCRIPTION	PLATE
DRAWN BY	NSP	REVISION No.	
DATE DRAWN		REVISION DATE	



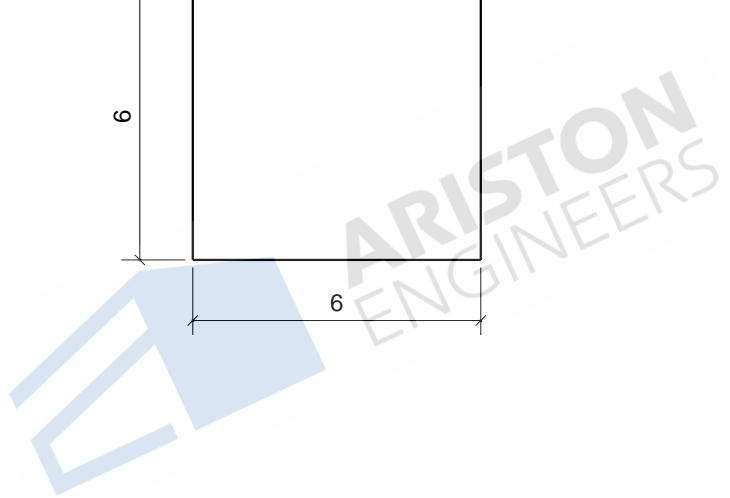
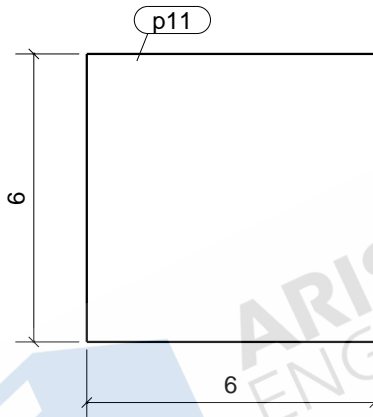
						1	B17	
						Qty.	In Assembly	
p9	PL3/8"X13"	A36	1	4'-9 3/4"	1555	80		
MARK	SIZE	GRADE	QTY.	LENGTH	AREA	WEIGHT		
MATERIAL LIST FOR WORKSHOP					TOTALS	1555 in ²	80 lb/ft	
			DRAWING No.		p9			
			JOB No.		DESCRIPTION		PLATE	
			DRAWN BY		NSP	REVISION No.		
			DATE DRAWN			REVISION DATE		

Tekla structures



Tekla structures

						1	B88
						Qty.	In Assembly
p10	PL3/8"X9 7/8"	A36	1	2'-2 15/16"	493	25	
MARK	SIZE	GRADE	QTY.	LENGTH	AREA	WEIGHT	
MATERIAL LIST FOR WORKSHOP					TOTALS	493 in ²	25 lb/ft
				DRAWING No.	p10		
				JOB No.		DESCRIPTION	PLATE
				DRAWN BY	NSP	REVISION No.	
				DATE DRAWN		REVISION DATE	



1	B46
1	B86
1	B88
1	C23
1	C24
1	C25
2	C29
3	C32
1	C33
2	C35
3	C37
1	C38
2	C40
1	C43
1	C44
Qty.	In Assembly

p11	FB3/8"X6"	A36	22	0'-6"	81	4	
MARK	SIZE	GRADE	QTY.	LENGTH	AREA	WEIGHT	
MATERIAL LIST FOR WORKSHOP					TOTALS	1782 in ²	84 lb/ft

DRAWING No. p11

JOB No.		DESCRIPTION	PLATE
DRAWN BY	NSP	REVISION No.	
DATE DRAWN		REVISION DATE	