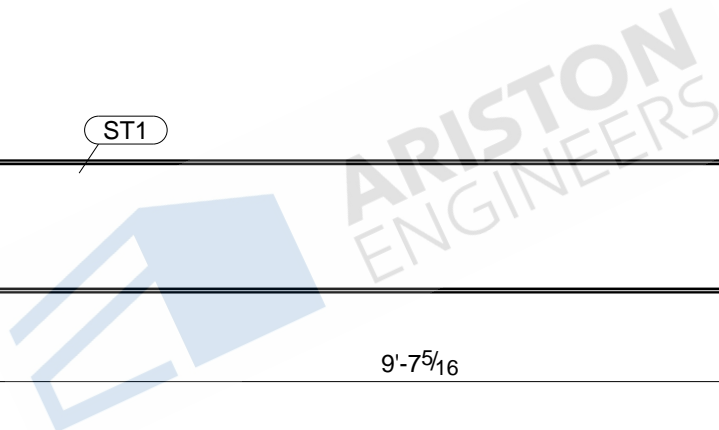
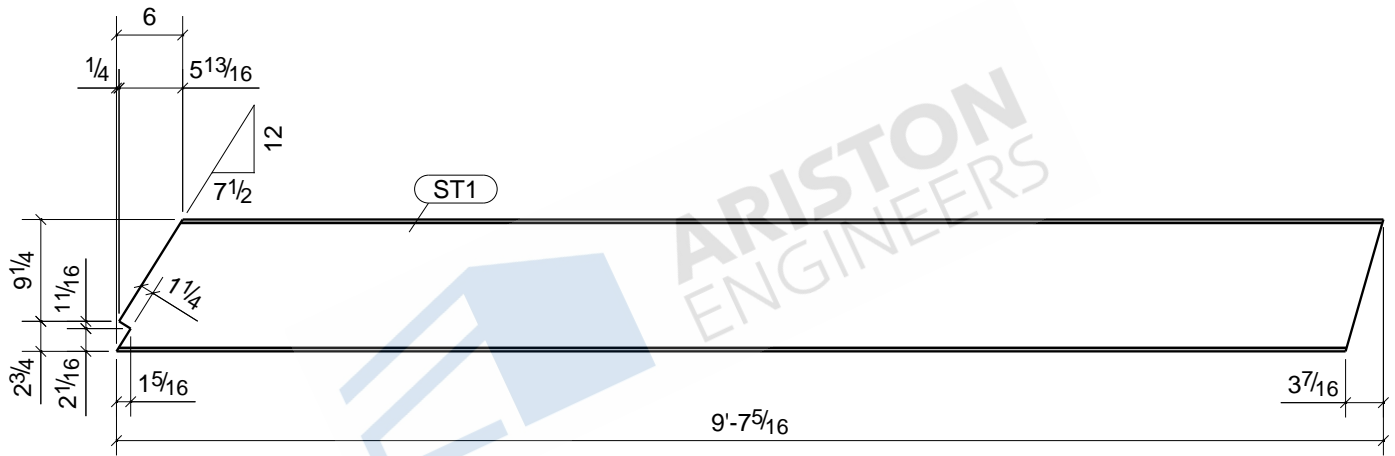


1	LD1
Qty.	In Assembly

LD1	PL3/8"X2 1/2"	A36	1	9'-0"	623	29	
MARK	SIZE	GRADE	QTY.	LENGTH	AREA	WEIGHT	
MATERIAL LIST FOR WORKSHOP					TOTALS	623 in ²	29 lb/ft

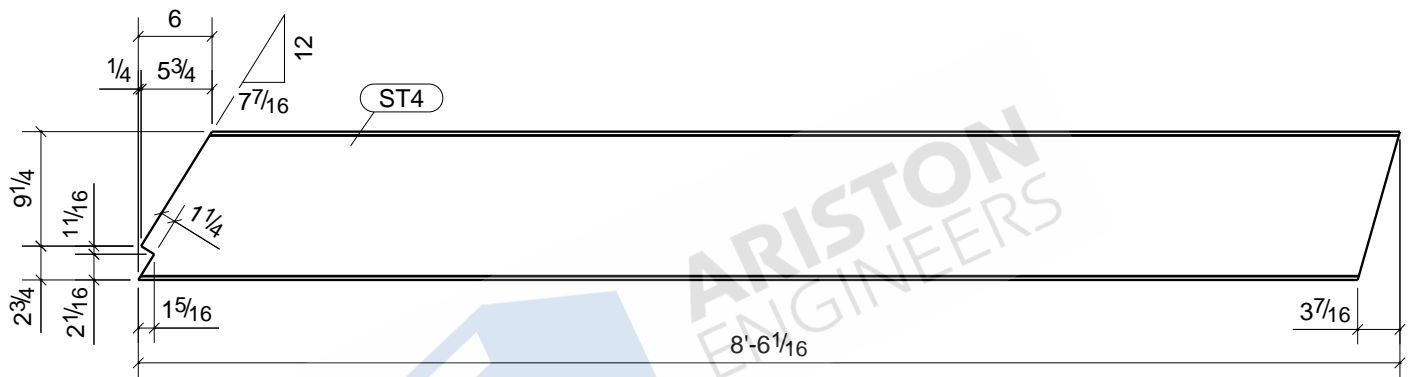
JOB DRAWING No.		LD1	
JOB No.	4372	DESCRIPTION	LADDER
DRAWN BY	ASM	REVISION No.	0
DATE DRAWN	02/04/2021	REVISION DATE	03/08/2021



1	ST1
Qty.	In Assembly

MARK	SIZE	GRADE	QTY.	LENGTH	AREA	WEIGHT	
ST1	MC12X10.6	A36	1	9'-7 5/16"	3288	101	
MATERIAL LIST FOR WORKSHOP					TOTALS	3288 in ²	101 lb/ft

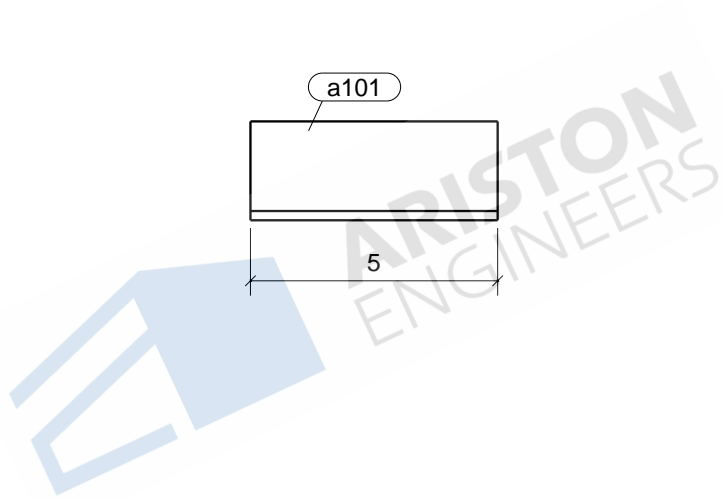
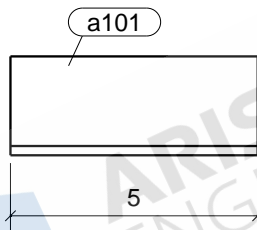
JOB DRAWING No.		ST1	
JOB No.	4372	DESCRIPTION	STAIR
DRAWN BY	ASM	REVISION No.	0
DATE DRAWN	01/18/2021	REVISION DATE	03/08/2021



1	ST4
Qty.	In Assembly

MARK	SIZE	GRADE	QTY.	LENGTH	AREA	WEIGHT
ST4	MC12X10.6	A36	1	8'-6 1/16"	2897	90
TOTALS					2897 in ²	90 lb/ft

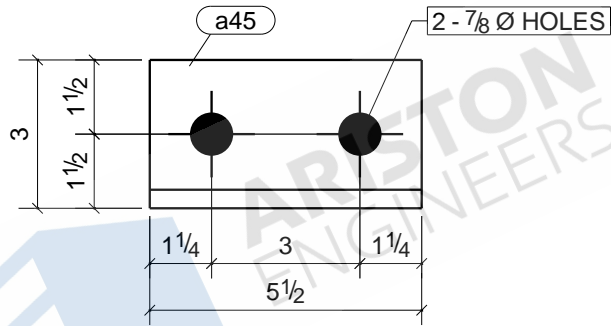
MATERIAL LIST FOR WORKSHOP		JOB	
		DRAWING No.	
		ST4	
		JOB No. 4372	
DRAWN BY ASM		DESCRIPTION STAIR	
DATE DRAWN 01/18/2021		REVISION No. 0	
		REVISION DATE 03/08/2021	



2	ST1
2	ST3
2	ST4
2	ST5
Qty.	In Assembly

a101	L2X2X3/16	A36	8	0'-5"	41	1
MARK	SIZE	GRADE	QTY.	LENGTH	AREA	WEIGHT
MATERIAL LIST FOR WORKSHOP				TOTALS	331 in ²	8 lb/ft

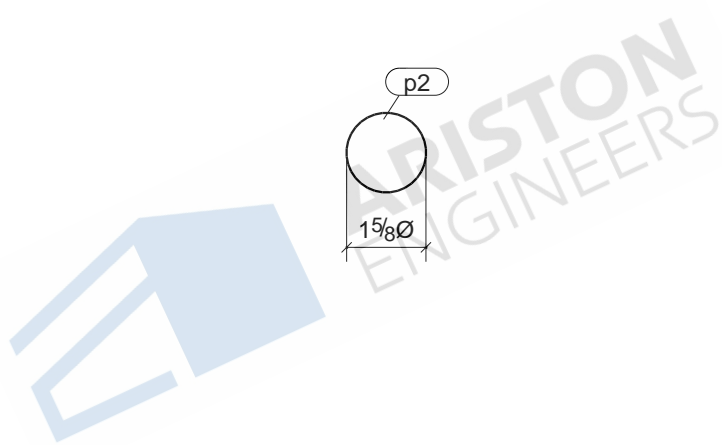
JOB DRAWING No.	a101		
JOB No.	4372	DESCRIPTION	ANGLE
DRAWN BY	ASM	REVISION No.	0
DATE DRAWN	01/18/2021	REVISION DATE	03/08/2021



2	ST2
2	ST6
Qty.	In Assembly

MARK	SIZE	GRADE	QTY.	LENGTH	AREA	WEIGHT
a45	L3X2-1/2X3/8	A36	4	0'-5 1/2"	64	3
MATERIAL LIST FOR WORKSHOP					TOTALS	257 in ² 12 lb/ft

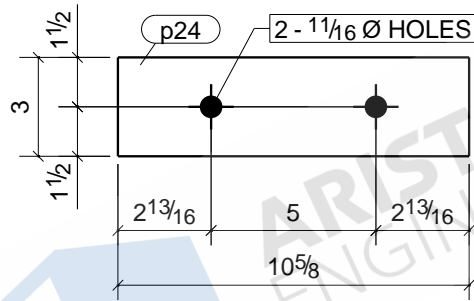
JOB DRAWING No.		a45	
JOB No.	4372	DESCRIPTION	ANGLE
DRAWN BY	ASM	REVISION No.	0
DATE DRAWN	01/18/2021	REVISION DATE	03/08/2021



2	WR1
2	WR2
2	WR3
1	WR7
1	WR11
2	WR12
2	WR13
2	WR14
2	WR15
2	WR16
6	WR17
1	WR18
1	WR23
2	WR24
2	WR25
4	WR26
Qty.	In Assembly

p2	PL1/8"X1 5/8"	A36	34	0'-1 5/8"	5	0	
MARK	SIZE	GRADE	QTY.	LENGTH	AREA	WEIGHT	
MATERIAL LIST FOR WORKSHOP					TOTALS	168 in ²	3 lb/ft
JOB DRAWING No.		p2					
JOB No.		4372	DESCRIPTION		PLATE		
DRAWN BY		ASM	REVISION No.		0		
DATE DRAWN		01/18/2021	REVISION DATE		03/08/2021		

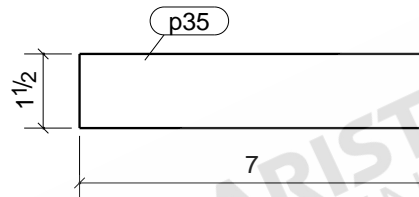
Tekla structures



2	SL1
Qty.	In Assembly

MARK	SIZE	GRADE	QTY.	LENGTH	AREA	WEIGHT	
p24	PL1/4"X3"	A36	2	0'-10 5/8"	71	2	
MATERIAL LIST FOR WORKSHOP					TOTALS	142 in ²	5 lb/ft

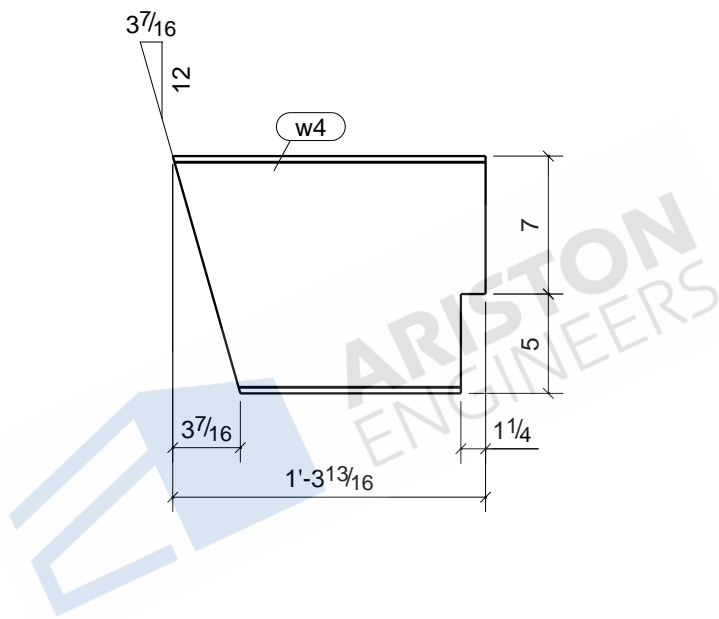
JOB DRAWING No.		p24	
JOB No.	4372	DESCRIPTION	PLATE
DRAWN BY	ASM	REVISION No.	0
DATE DRAWN	01/18/2021	REVISION DATE	03/08/2021



2	ST1
2	ST2
2	ST3
2	ST4
2	ST5
2	ST6
Qty.	In Assembly

p35	PL1/4"X1 1/2"	A36	12	0'-7"	25	1
MARK	SIZE	GRADE	QTY.	LENGTH	AREA	WEIGHT
MATERIAL LIST FOR WORKSHOP				TOTALS	302 in ²	9 lb/ft

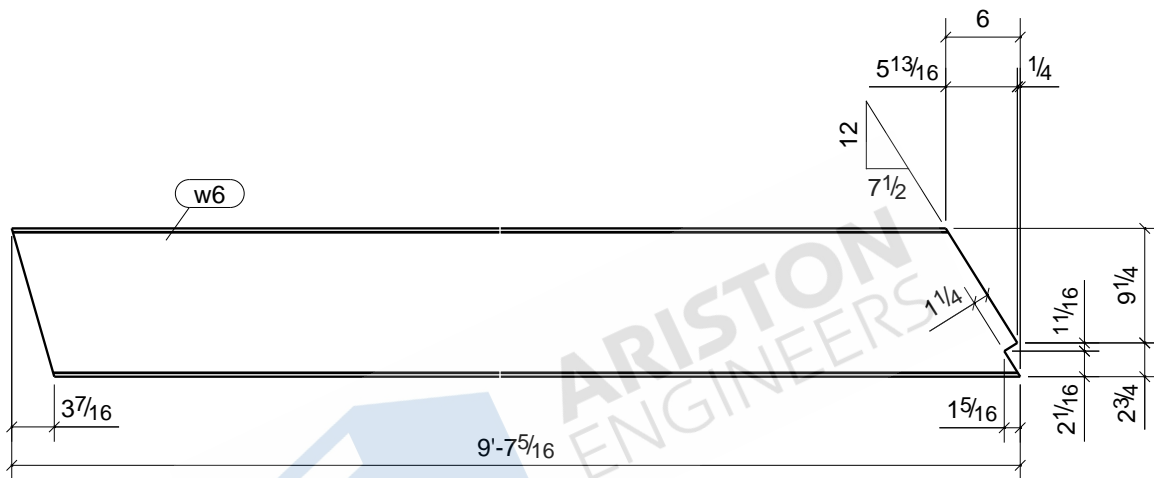
JOB DRAWING No.		p35	
JOB No.	4372	DESCRIPTION	PLATE
DRAWN BY	ASM	REVISION No.	0
DATE DRAWN	01/18/2021	REVISION DATE	03/08/2021



1	ST2
1	ST6
Qty.	In Assembly

w4	MC12X10.6	A36	2	1'-3 13/16"	408	14
MARK	SIZE	GRADE	QTY.	LENGTH	AREA	WEIGHT
MATERIAL LIST FOR WORKSHOP				TOTALS	815 in ²	28 lb/ft

JOB DRAWING No.		w4	
JOB No.	4372	DESCRIPTION	STRINGER
DRAWN BY	ASM	REVISION No.	0
DATE DRAWN	01/18/2021	REVISION DATE	03/08/2021



1	ST1
1	ST5
Qty.	In Assembly

w6	MC12X10.6	A36	2	9'-7 5/16"	3288	101
MARK	SIZE	GRADE	QTY.	LENGTH	AREA	WEIGHT
MATERIAL LIST FOR WORKSHOP				TOTALS	6575 in ²	203 lb/ft

JOB DRAWING No.		w6	
JOB No.	4372	DESCRIPTION	STRINGER
DRAWN BY	ASM	REVISION No.	0
DATE DRAWN	01/18/2021	REVISION DATE	03/08/2021