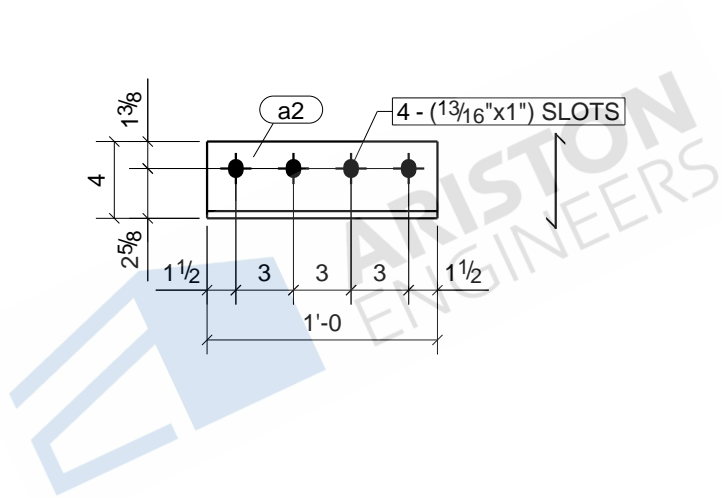
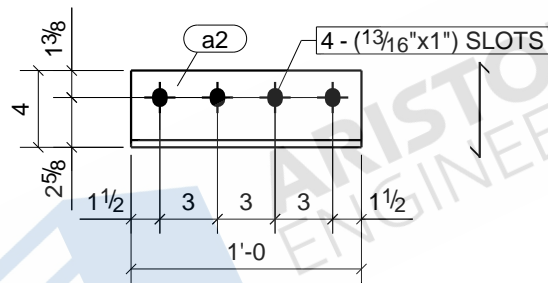


4	B1
2	B4
8	B15
2	B16
6	B37
2	B49
Qty.	In Assembly

a1	L4X3-1/2X3/8	A36	24	1'-3"	230	11
MARK	SIZE	GRADE	QTY.	LENGTH	AREA	WEIGHT
MATERIAL LIST FOR WORKSHOP				TOTALS	5528 in ²	274 lb/ft

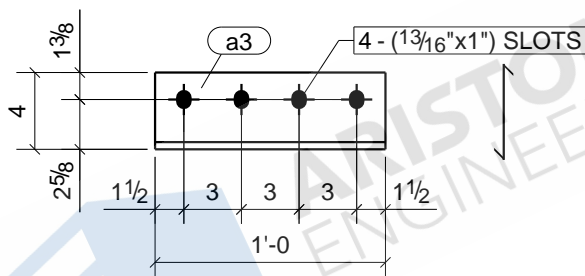
JOB DRAWING No. a1		ROCKWELL PARK	
JOB No.		DESCRIPTION	ANGLE
DRAWN BY	ARP	REVISION No.	
DATE DRAWN		REVISION DATE	



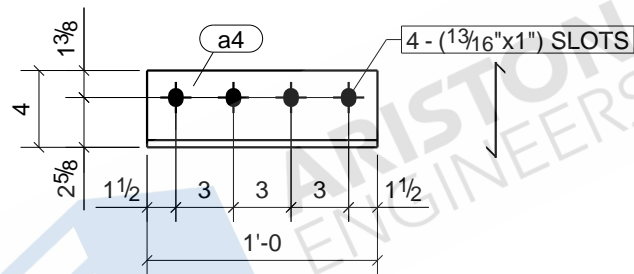
40	B7
4	B36
Qty.	In Assembly

a2	L4X3-1/2X3/8	A36	44	1'-0"	185	9
MARK	SIZE	GRADE	QTY.	LENGTH	AREA	WEIGHT
MATERIAL LIST FOR WORKSHOP				TOTALS	8155 in ²	401 lb/ft

JOB DRAWING No.		ROCKWELL PARK	
a2		a2	
JOB No.		DESCRIPTION	ANGLE
DRAWN BY	ARP	REVISION No.	
DATE DRAWN		REVISION DATE	



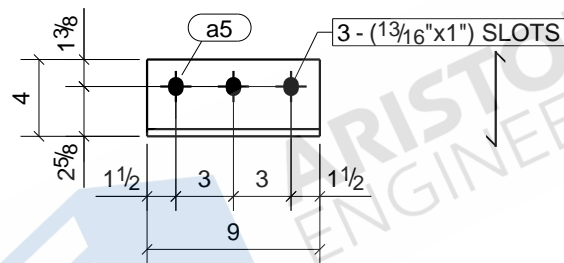
						1	B11
						Qty.	In Assembly
a3	L4X3-1/2X3/8	A36	1	1'-0"	185		9
MARK	SIZE	GRADE	QTY.	LENGTH	AREA		WEIGHT
MATERIAL LIST FOR WORKSHOP					TOTALS	185 in ²	9 lb/ft
			JOB	ROCKWELL PARK			
			DRAWING No.	a3			
			JOB No.			DESCRIPTION	ANGLE
			DRAWN BY	ARP		REVISION No.	
			DATE DRAWN			REVISION DATE	



20	B5
32	B6
1	B11
1	B19
4	B31
4	B36
2	B42
Qty.	In Assembly

a4	L4X3-1/2X3/8	A36	64	1'-0"	185	9
MARK	SIZE	GRADE	QTY.	LENGTH	AREA	WEIGHT
MATERIAL LIST FOR WORKSHOP				TOTALS	11862 in ²	584 lb/ft

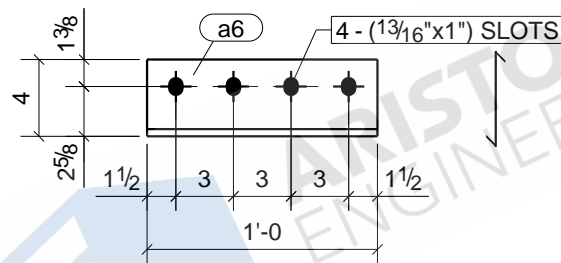
JOB DRAWING No. a4		ROCKWELL PARK	
JOB No.		DESCRIPTION	ANGLE
DRAWN BY	ARP	REVISION No.	
DATE DRAWN		REVISION DATE	



20	B5
4	B13
8	B21
4	B32
4	B39
Qty.	In Assembly

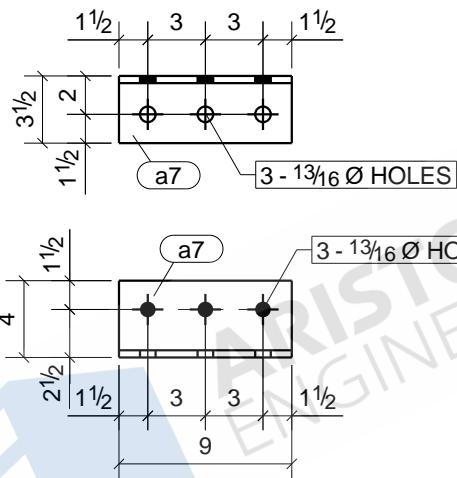
a5	L4X3-1/2X3/8	A36	40	0'-9"	140	7
MARK	SIZE	GRADE	QTY.	LENGTH	AREA	WEIGHT
MATERIAL LIST FOR WORKSHOP				TOTALS	5614 in ²	274 lb/ft

JOB DRAWING No. a5		ROCKWELL PARK	
JOB No.		DESCRIPTION	ANGLE
DRAWN BY	ARP	REVISION No.	
DATE DRAWN		REVISION DATE	



						1	B19
						Qty.	In Assembly
a6	L4X3-1/2X3/8	A36	1	1'-0"	185		9
MARK	SIZE	GRADE	QTY.	LENGTH	AREA		WEIGHT
MATERIAL LIST FOR WORKSHOP					TOTALS	185 in ²	9 lb/ft

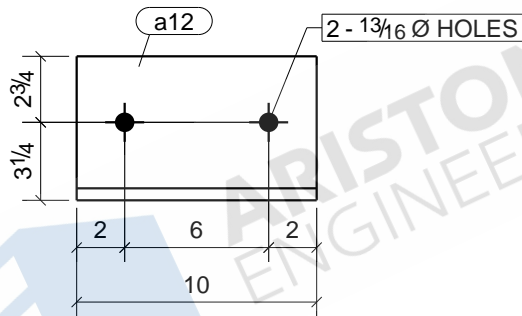
JOB DRAWING No.		ROCKWELL PARK	
a6			
JOB No.		DESCRIPTION	ANGLE
DRAWN BY	ARP	REVISION No.	
DATE DRAWN		REVISION DATE	



2	B4
8	B13
4	B14
4	B30
8	B32
4	B33
4	B41
2	B49
Qty.	In Assembly

a7	L4X3-1/2X3/8	A36	36	0'-9"	140	7
MARK	SIZE	GRADE	QTY.	LENGTH	AREA	WEIGHT
MATERIAL LIST FOR WORKSHOP				TOTALS	5052 in ²	246 lb/ft

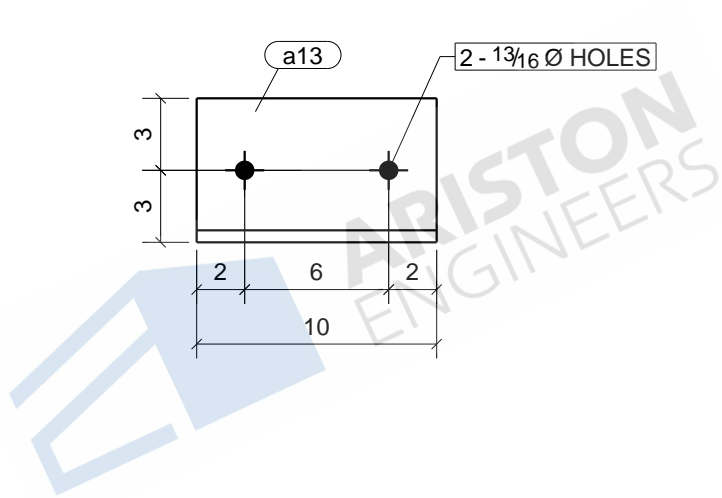
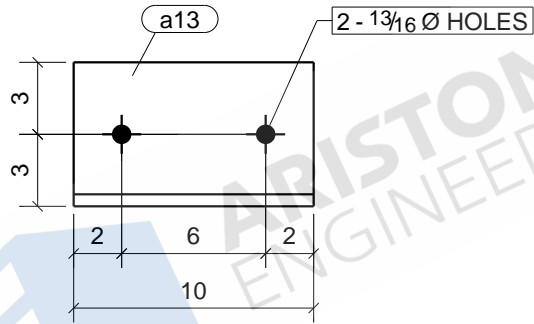
JOB DRAWING No. a7		ROCKWELL PARK	
JOB No.		DESCRIPTION	ANGLE
DRAWN BY	ARP	REVISION No.	
DATE DRAWN		REVISION DATE	



6	C6
6	C8
6	C10
6	C13
Qty.	In Assembly

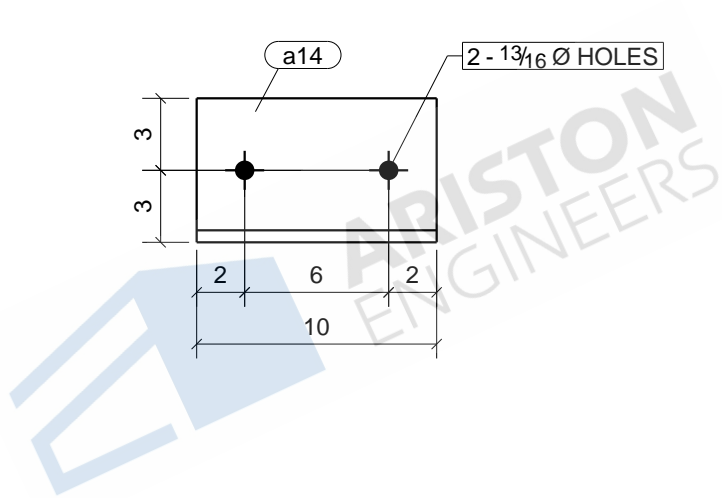
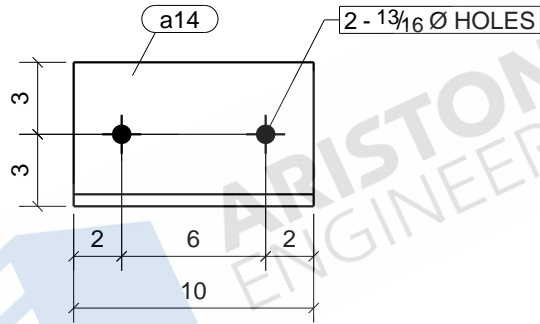
a12	L6X6X1/2	A36	24	0'-10"	252	16
MARK	SIZE	GRADE	QTY.	LENGTH	AREA	WEIGHT
MATERIAL LIST FOR WORKSHOP				TOTALS	6036 in ²	393 lb/ft

JOB DRAWING No. a12		ROCKWELL PARK	
JOB No.		DESCRIPTION	ANGLE
DRAWN BY	ARP	REVISION No.	
DATE DRAWN		REVISION DATE	



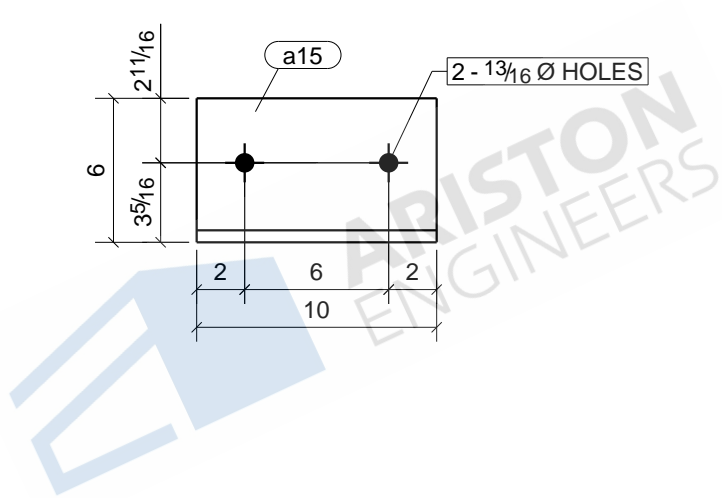
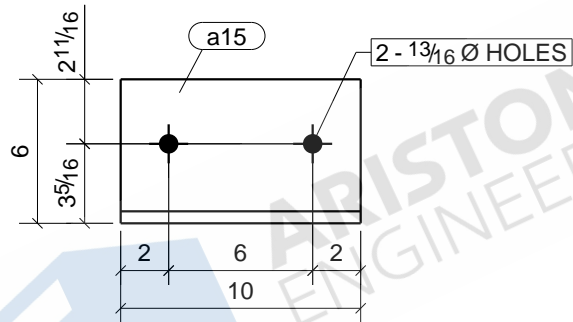
						1	C11
						Qty.	In Assembly
a13	L6X6X1/2	A36	1	0'-10"	252		16
MARK	SIZE	GRADE	QTY.	LENGTH	AREA		WEIGHT
MATERIAL LIST FOR WORKSHOP					TOTALS	252 in ²	16 lb/ft

JOB DRAWING No. a13		ROCKWELL PARK	
JOB No.		DESCRIPTION	ANGLE
DRAWN BY	ARP	REVISION No.	
DATE DRAWN		REVISION DATE	



						1	C3
						Qty.	In Assembly
a14	L6X6X1/2	A36	1	0'-10"	252		16
MARK	SIZE	GRADE	QTY.	LENGTH	AREA	WEIGHT	
MATERIAL LIST FOR WORKSHOP					TOTALS	252 in ²	16 lb/ft

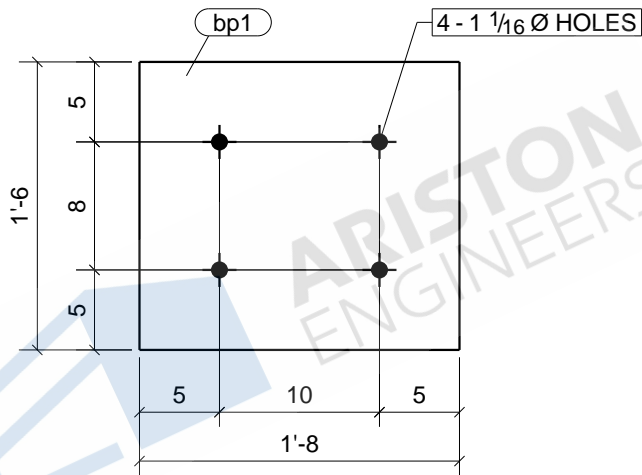
JOB DRAWING No. a14		ROCKWELL PARK	
JOB No.		DESCRIPTION	ANGLE
DRAWN BY	ARP	REVISION No.	
DATE DRAWN		REVISION DATE	



1	C7
5	C9
6	C12
Qty.	In Assembly

a15	L6X6X1/2	A36	12	0'-10"	252	16
MARK	SIZE	GRADE	QTY.	LENGTH	AREA	WEIGHT
MATERIAL LIST FOR WORKSHOP				TOTALS	3018 in ²	196 lb/ft

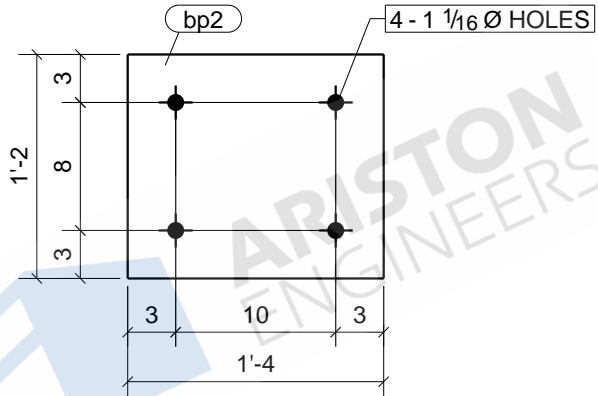
JOB DRAWING No. a15		ROCKWELL PARK	
JOB No.		DESCRIPTION	ANGLE
DRAWN BY	ARP	REVISION No.	
DATE DRAWN		REVISION DATE	



1	C2
1	C11
1	C13
Qty.	In Assembly

bp1	PL3/4"X18"	A36	3	1'-8"	777	77
MARK	SIZE	GRADE	QTY.	LENGTH	AREA	WEIGHT
MATERIAL LIST FOR WORKSHOP				TOTALS	2331 in ²	230 lb/ft

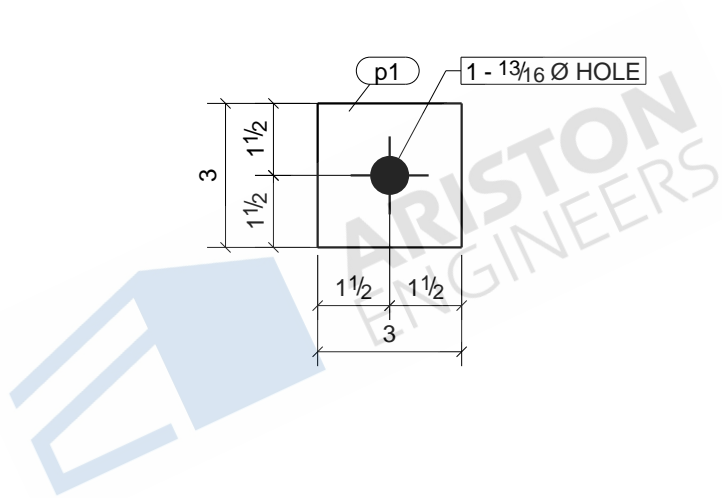
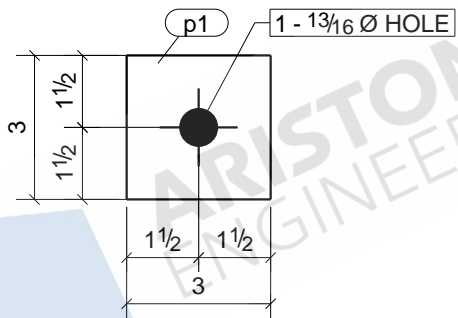
JOB DRAWING No.		ROCKWELL PARK	
bp1		bp1	
JOB No.		DESCRIPTION	BASE PLATE
DRAWN BY	ARP	REVISION No.	
DATE DRAWN		REVISION DATE	



1	C1
1	C14
Qty.	In Assembly

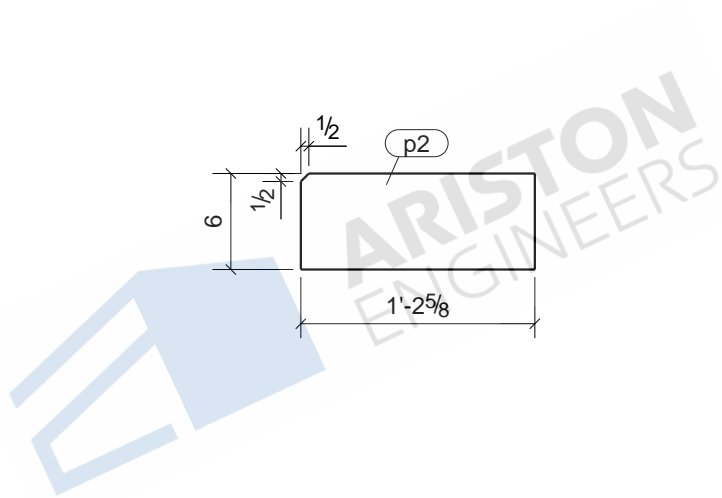
bp2	PL3/4"X14"	A36	2	1'-4"	493	48
MARK	SIZE	GRADE	QTY.	LENGTH	AREA	WEIGHT
MATERIAL LIST FOR WORKSHOP				TOTALS	986 in ²	95 lb/ft

JOB DRAWING No.		ROCKWELL PARK	
bp2		bp2	
JOB No.		DESCRIPTION	BASE PLATE
DRAWN BY	ARP	REVISION No.	
DATE DRAWN		REVISION DATE	



						72	ADV1
						Qty.	In Assembly
p1	PL3/8"X3"	A36	72	0'-3"	22		1
MARK	SIZE	GRADE	QTY.	LENGTH	AREA		WEIGHT
MATERIAL LIST FOR WORKSHOP					TOTALS	1620 in ²	69 lb/ft

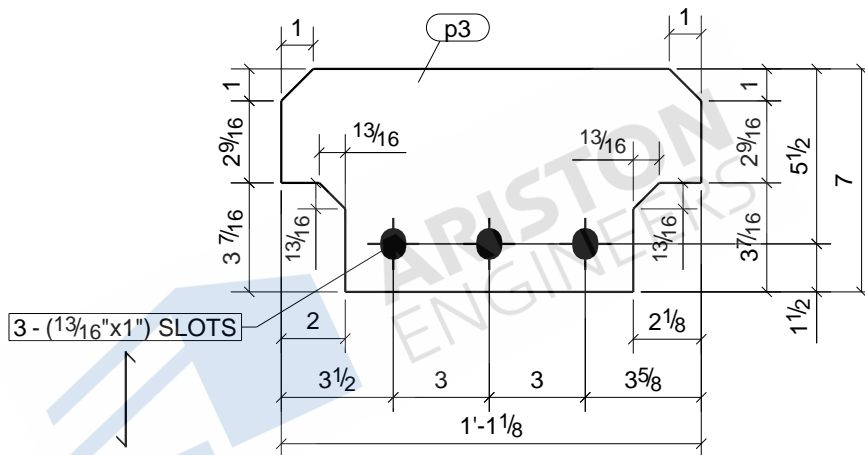
		JOB DRAWING No.		ROCKWELL PARK	
		p1			
		JOB No.		DESCRIPTION	
		DRAWN BY		REVISION No.	
		DATE DRAWN		REVISION DATE	
		ARP			
				PLATE	



7	B2
7	B3
7	B47
7	B48
Qty.	In Assembly

p2	PL5/16"X6"	A36	28	1'-2 5/8"	188	8
MARK	SIZE	GRADE	QTY.	LENGTH	AREA	WEIGHT
MATERIAL LIST FOR WORKSHOP				TOTALS	5265 in ²	217 lb/ft

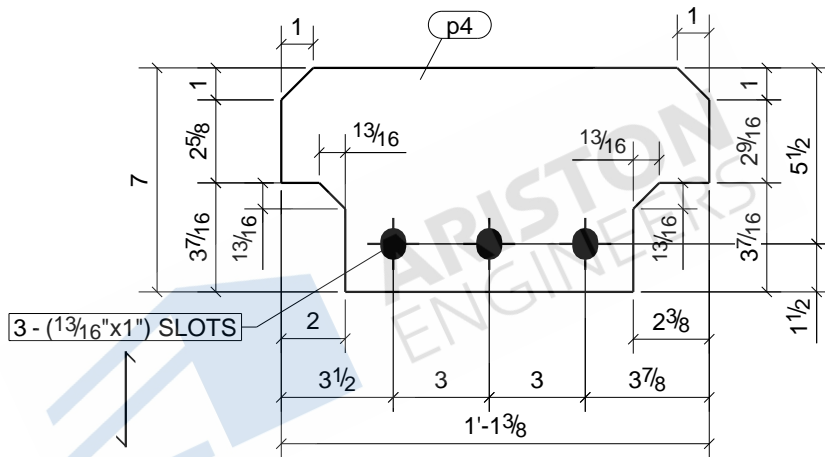
JOB DRAWING No.		ROCKWELL PARK	
p2		p2	
JOB No.	DESCRIPTION	PLATE	
DRAWN BY	REVISION No.		
DATE DRAWN	REVISION DATE		



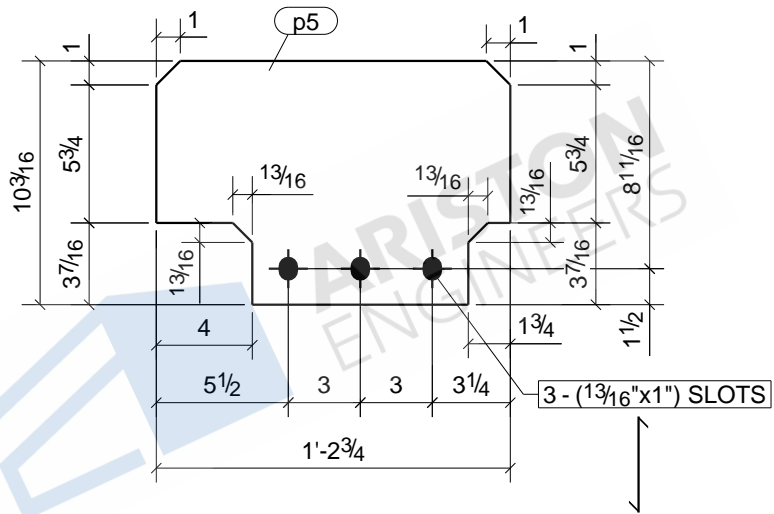
1	C1
1	C14
Qty.	In Assembly

p3	PL3/8"x7"	A36	2	1'-1 1/8"	168	8	
MARK	SIZE	GRADE	QTY.	LENGTH	AREA	WEIGHT	
MATERIAL LIST FOR WORKSHOP					TOTALS	337 in ²	16 lb/ft

JOB DRAWING No.		ROCKWELL PARK	
p3		p3	
JOB No.	DESCRIPTION	PLATE	
DRAWN BY	REVISION No.		
DATE DRAWN	REVISION DATE		



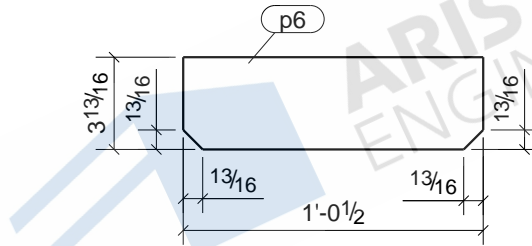
						8	C4
						Qty.	In Assembly
p4	PL3/8"x7"	A36	8	1'-1 3/8"	171	8	
MARK	SIZE	GRADE	QTY.	LENGTH	AREA	WEIGHT	
MATERIAL LIST FOR WORKSHOP					TOTALS	1370 in ²	67 lb/ft
JOB DRAWING No.				ROCKWELL PARK			
JOB No.				p4		DESCRIPTION	
DRAWN BY				ARP		REVISION No.	
DATE DRAWN						REVISION DATE	



1	C3
2	C6
2	C8
2	C10
1	C11
2	C13
Qty.	In Assembly

p5	PL3/8"X10 3/16"	A36	10	1'-2 3/4"	278	14	
MARK	SIZE	GRADE	QTY.	LENGTH	AREA	WEIGHT	
MATERIAL LIST FOR WORKSHOP					TOTALS	2776 in ²	138 lb/ft

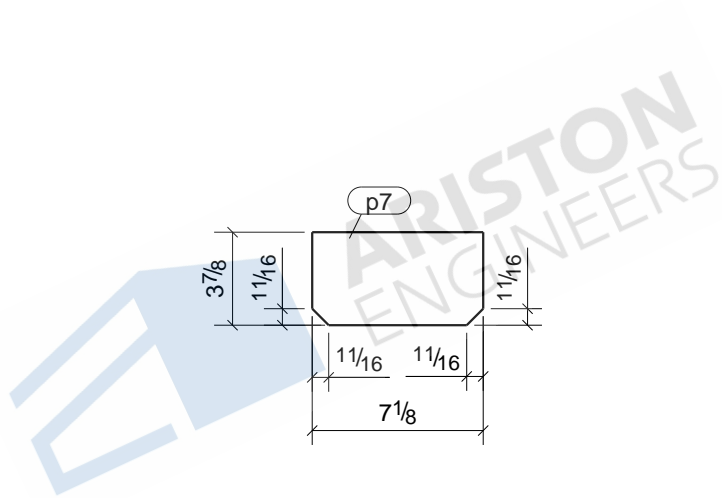
JOB DRAWING No.		ROCKWELL PARK	
p5		p5	
JOB No.	DESCRIPTION	PLATE	
DRAWN BY	REVISION No.		
DATE DRAWN	REVISION DATE		



4	C1
4	C14
Qty.	In Assembly

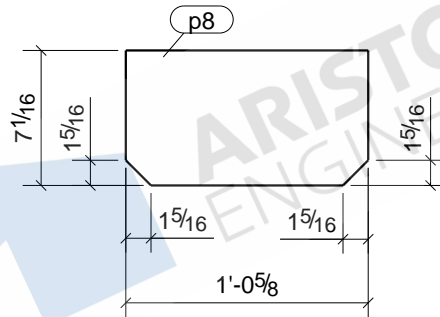
p6	PL3/8"X3 13/16"	A36	8	1'-0 1/2"	107	5	
MARK	SIZE	GRADE	QTY.	LENGTH	AREA	WEIGHT	
MATERIAL LIST FOR WORKSHOP					TOTALS	853 in ²	40 lb/ft

JOB DRAWING No.		ROCKWELL PARK	
p6		p6	
JOB No.	DESCRIPTION	PLATE	
DRAWN BY	REVISION No.		
DATE DRAWN	REVISION DATE		



						8	C4
						Qty.	In Assembly
p7	PL3/8"X3 7/8"	A36	8	0'-7 1/8"	62		3
MARK	SIZE	GRADE	QTY.	LENGTH	AREA		WEIGHT
MATERIAL LIST FOR WORKSHOP					TOTALS	498 in ²	23 lb/ft

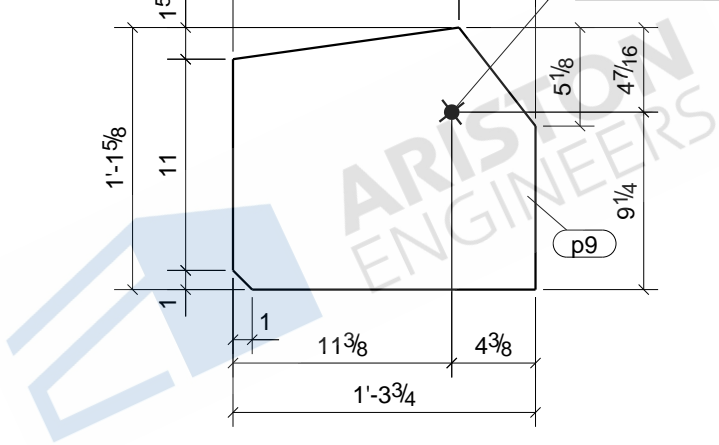
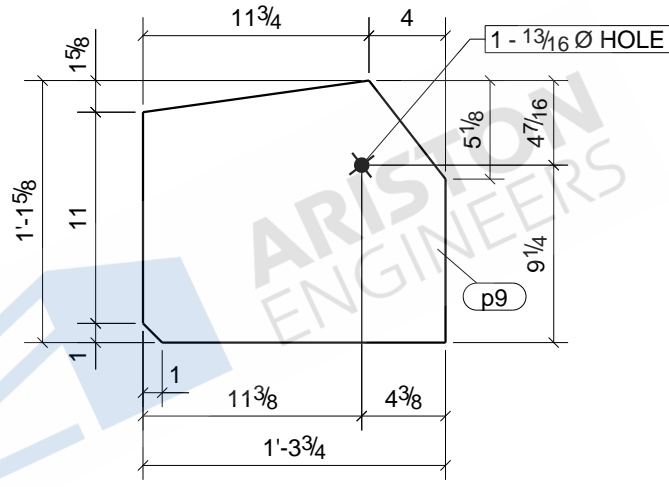
JOB DRAWING No.		ROCKWELL PARK	
p7		p7	
JOB No.		DESCRIPTION	PLATE
DRAWN BY	ARP	REVISION No.	
DATE DRAWN		REVISION DATE	



2	C3
2	C6
2	C8
2	C10
2	C11
2	C13
Qty.	In Assembly

p8	PL3/8"X7 1/16"	A36	12	1'-0 5/8"	188	9
MARK	SIZE	GRADE	QTY.	LENGTH	AREA	WEIGHT
MATERIAL LIST FOR WORKSHOP				TOTALS	2259 in ²	111 lb/ft

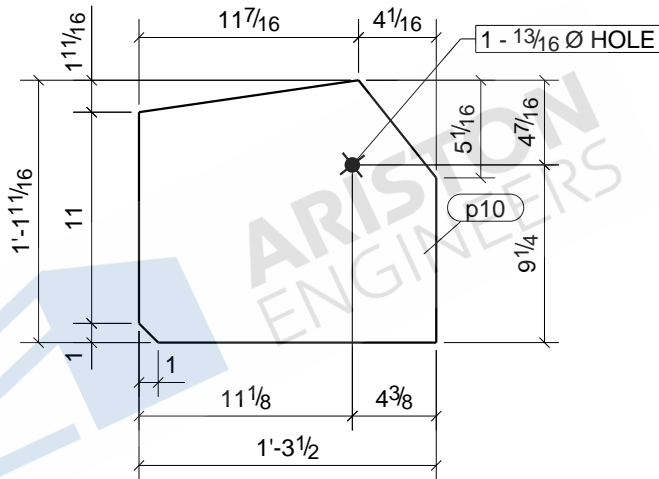
JOB DRAWING No.		ROCKWELL PARK	
p8		p8	
JOB No.		DESCRIPTION	PLATE
DRAWN BY	ARP	REVISION No.	
DATE DRAWN		REVISION DATE	



1	C7
1	C9
Qty.	In Assembly

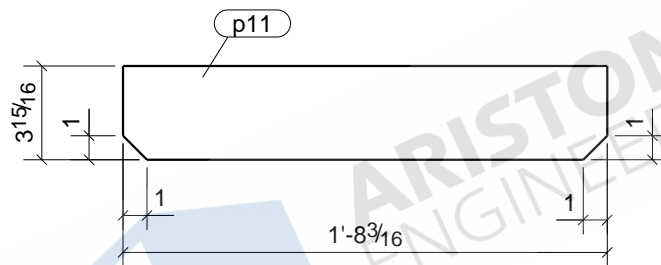
p9	PL1/2"X13 5/8"	A36	2	1'-3 3/4"	416	28
MARK	SIZE	GRADE	QTY.	LENGTH	AREA	WEIGHT
MATERIAL LIST FOR WORKSHOP				TOTALS	833 in ²	55 lb/ft

JOB DRAWING No.		ROCKWELL PARK	
JOB No.		p9	
DRAWN BY		ARP	DESCRIPTION
DATE DRAWN		REVISION No.	PLATE
		REVISION DATE	



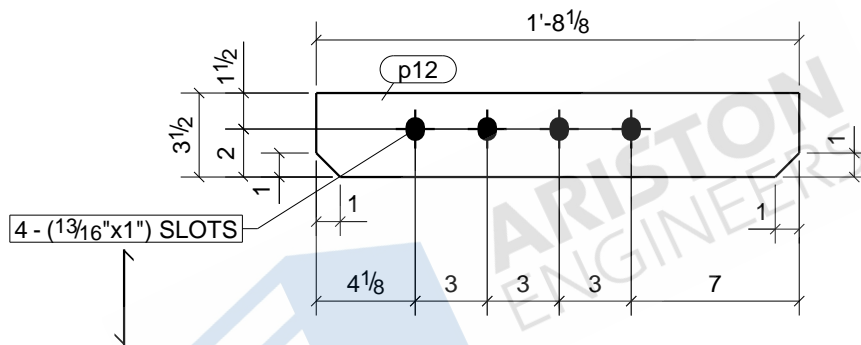
						1	C12
						Qty.	In Assembly
p10	PL1/2"X13 11/16"	A36	1	1'-3 1/2"	409		27
MARK	SIZE	GRADE	QTY.	LENGTH	AREA		WEIGHT
MATERIAL LIST FOR WORKSHOP					TOTALS	409 in ²	27 lb/ft

JOB DRAWING No.		ROCKWELL PARK	
p10			
JOB No.		DESCRIPTION	PLATE
DRAWN BY	ARP	REVISION No.	
DATE DRAWN		REVISION DATE	



						1	B51
						1	B53
						Qty.	In Assembly
p11	PL1/2"X3 15/16"	A36	2	1'-8 3/16"	179		11
MARK	SIZE	GRADE	QTY.	LENGTH	AREA		WEIGHT
MATERIAL LIST FOR WORKSHOP					TOTALS	358 in ²	22 lb/ft

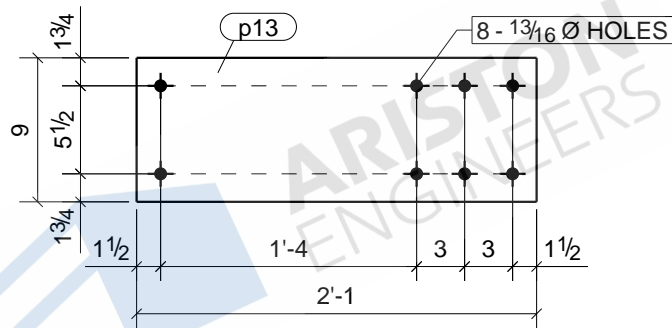
JOB DRAWING No.		ROCKWELL PARK	
p11			
JOB No.		DESCRIPTION	PLATE
DRAWN BY	ARP	REVISION No.	
DATE DRAWN		REVISION DATE	



1	B51
8	B52
1	B53
Qty.	In Assembly

p12	PL1/2"X3 1/2"	A36	10	1'-8 1/8"	162	10
MARK	SIZE	GRADE	QTY.	LENGTH	AREA	WEIGHT
MATERIAL LIST FOR WORKSHOP				TOTALS	1619 in ²	98 lb/ft

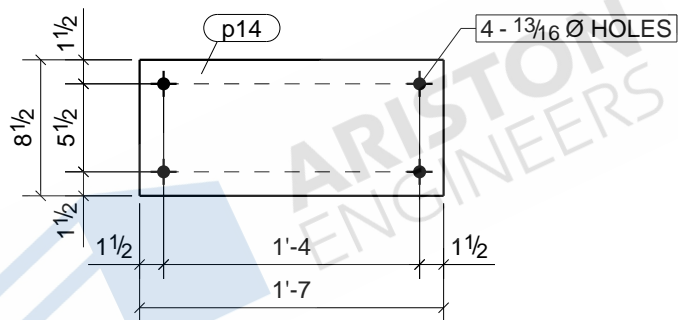
JOB DRAWING No.		ROCKWELL PARK	
p12		p12	
JOB No.		DESCRIPTION	PLATE
DRAWN BY	ARP	REVISION No.	
DATE DRAWN		REVISION DATE	



2	B3
2	B48
Qty.	In Assembly

p13	PL1/2"X9"	A36	4	2'-1"	484	32
MARK	SIZE	GRADE	QTY.	LENGTH	AREA	WEIGHT
MATERIAL LIST FOR WORKSHOP				TOTALS	1936 in ²	128 lb/ft

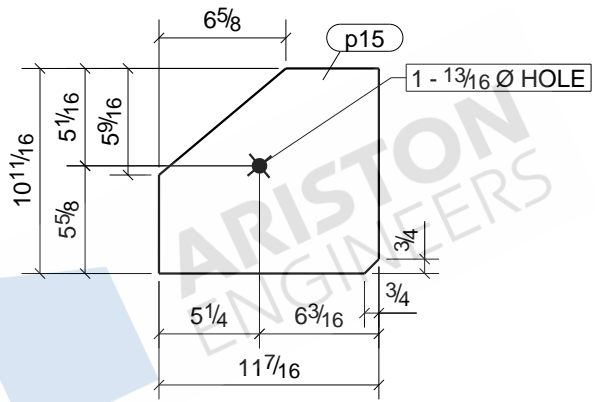
JOB DRAWING No.		ROCKWELL PARK	
p13		p13	
JOB No.	DESCRIPTION	PLATE	
DRAWN BY	REVISION No.		
DATE DRAWN	REVISION DATE		



2	B2
2	B47
Qty.	In Assembly

p14	PL1/2"X8 1/2"	A36	4	1'-7"	351	23
MARK	SIZE	GRADE	QTY.	LENGTH	AREA	WEIGHT
MATERIAL LIST FOR WORKSHOP				TOTALS	1402 in ²	92 lb/ft

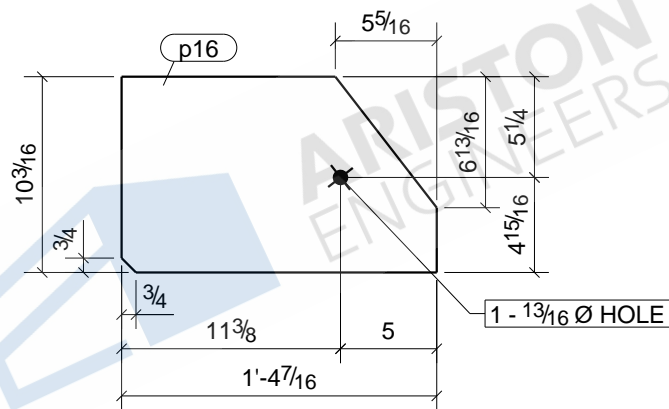
JOB DRAWING No.		ROCKWELL PARK	
p14		p14	
JOB No.	DESCRIPTION	PLATE	
DRAWN BY	REVISION No.		
DATE DRAWN	REVISION DATE		



1	B3
1	B48
Qty.	In Assembly

p15	PL1/2"X10 11/16"	A36	2	0'-11 7/16"	228	15
MARK	SIZE	GRADE	QTY.	LENGTH	AREA	WEIGHT
MATERIAL LIST FOR WORKSHOP				TOTALS	455 in ²	29 lb/ft

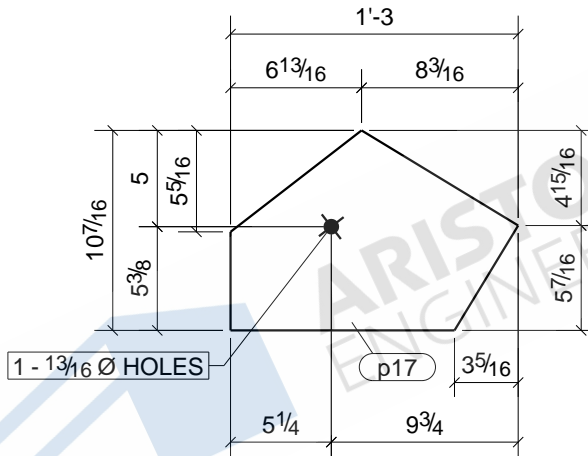
JOB DRAWING No.		ROCKWELL PARK			
JOB No.		p15		DESCRIPTION	PLATE
DRAWN BY		ARP		REVISION No.	
DATE DRAWN				REVISION DATE	



1	B3
1	B48
Qty.	In Assembly

p16	PL1/2"X10 3/16"	A36	2	1'-4 7/16"	323	21
MARK	SIZE	GRADE	QTY.	LENGTH	AREA	WEIGHT
MATERIAL LIST FOR WORKSHOP				TOTALS	646 in ²	42 lb/ft

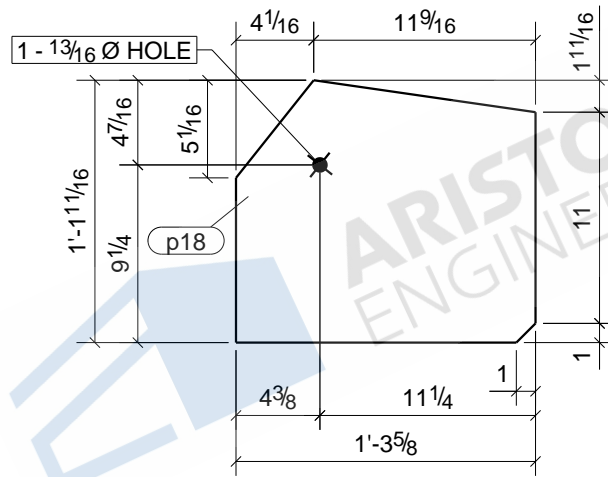
JOB DRAWING No.		ROCKWELL PARK	
p16		p16	
JOB No.	DESCRIPTION	PLATE	
DRAWN BY	REVISION No.		
DATE DRAWN	REVISION DATE		



1	B4
1	B49
Qty.	In Assembly

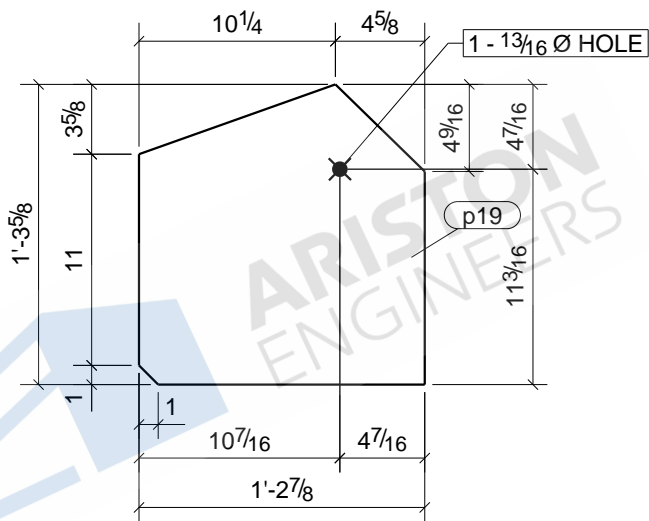
p17	PL1/2"X10 7/16"	A36	2	1'-3"	238	15	
MARK	SIZE	GRADE	QTY.	LENGTH	AREA	WEIGHT	
MATERIAL LIST FOR WORKSHOP					TOTALS	476 in ²	31 lb/ft

JOB DRAWING No.		ROCKWELL PARK			
JOB No.		p17		DESCRIPTION	PLATE
DRAWN BY		ARP		REVISION No.	
DATE DRAWN				REVISION DATE	



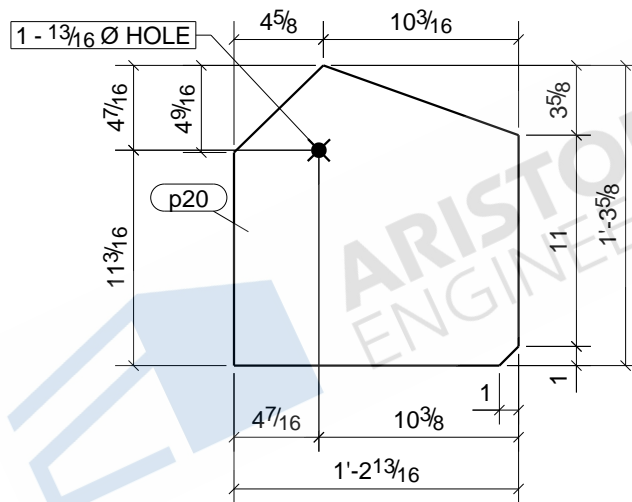
						1	C15
						Qty.	In Assembly
p18	PL1/2"X13 11/16"	A36	1	1'-3 5/8"	412		27
MARK	SIZE	GRADE	QTY.	LENGTH	AREA		WEIGHT
MATERIAL LIST FOR WORKSHOP					TOTALS	412 in ²	27 lb/ft

JOB DRAWING No.		ROCKWELL PARK	
p18			
JOB No.	DESCRIPTION	PLATE	
DRAWN BY	REVISION No.		
DATE DRAWN	REVISION DATE		

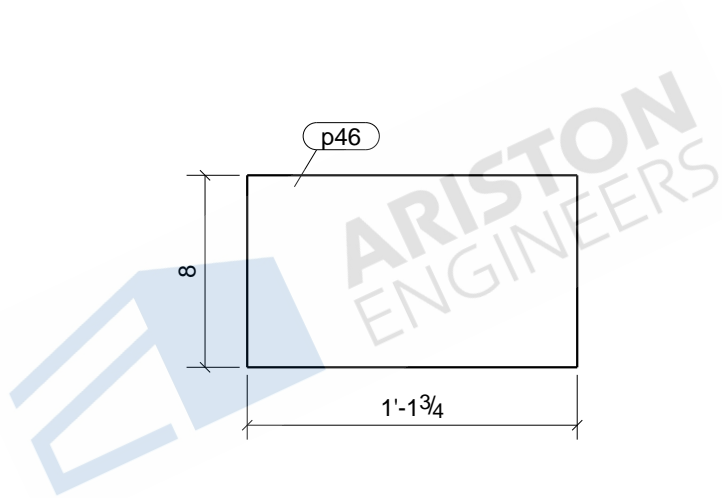


						1	C3
						Qty.	In Assembly
p19	PL1/2"X14 7/8"	A36	1	1'-3 5/8"	433		29
MARK	SIZE	GRADE	QTY.	LENGTH	AREA		WEIGHT
MATERIAL LIST FOR WORKSHOP					TOTALS	433 in ²	29 lb/ft

		JOB		ROCKWELL PARK	
		DRAWING No.		p19	
		JOB No.		DESCRIPTION	
		DRAWN BY		REVISION No.	
DATE DRAWN		REVISION DATE			



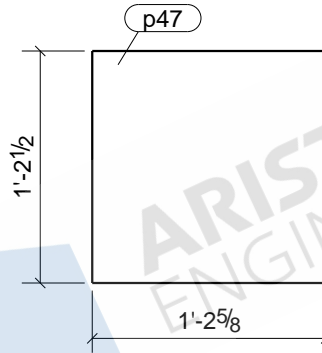
						1	C6
						Qty.	In Assembly
p20	PL1/2"X14 13/16"	A36	1	1'-3 5/8"	432		29
MARK	SIZE	GRADE	QTY.	LENGTH	AREA		WEIGHT
MATERIAL LIST FOR WORKSHOP					TOTALS	432 in ²	29 lb/ft
			JOB	ROCKWELL PARK			
			DRAWING No.	p20			
			JOB No.	DESCRIPTION		PLATE	
			DRAWN BY	REVISION No.			
			DATE DRAWN	REVISION DATE			



1	C1
1	C14
Qty.	In Assembly

p46	PL3/4"X8"	A36	2	1'-1 3/4"	253	23
MARK	SIZE	GRADE	QTY.	LENGTH	AREA	WEIGHT
MATERIAL LIST FOR WORKSHOP				TOTALS	505 in ²	47 lb/ft

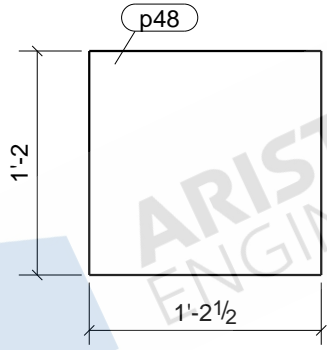
JOB DRAWING No.		ROCKWELL PARK	
p46		p46	
JOB No.	DESCRIPTION	CAP PLATE	
DRAWN BY	REVISION No.		
DATE DRAWN	REVISION DATE		



1	C3
1	C11
Qty.	In Assembly

p47	PL3/4"X14 1/2"	A36	2	1'-2 5/8"	468	45
MARK	SIZE	GRADE	QTY.	LENGTH	AREA	WEIGHT
MATERIAL LIST FOR WORKSHOP				TOTALS	936 in ²	90 lb/ft

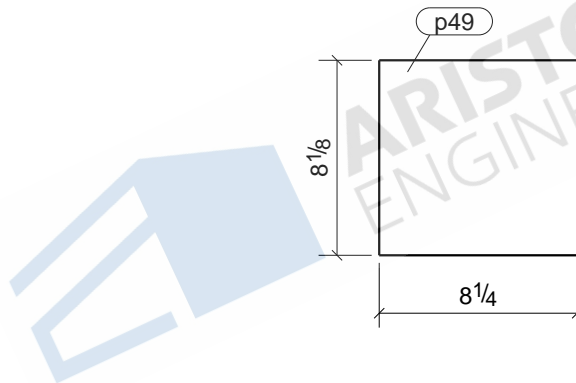
JOB DRAWING No.		ROCKWELL PARK	
p47		p47	
JOB No.		DESCRIPTION	CAP PLATE
DRAWN BY	ARP	REVISION No.	
DATE DRAWN		REVISION DATE	



1	C6
1	C8
1	C10
1	C13
Qty.	In Assembly

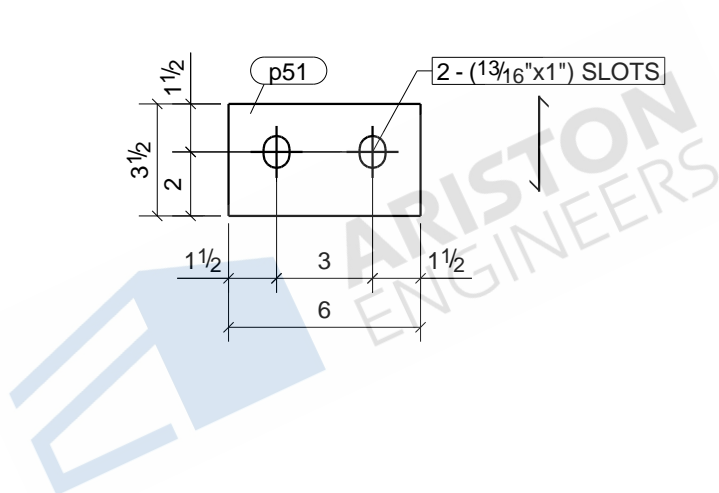
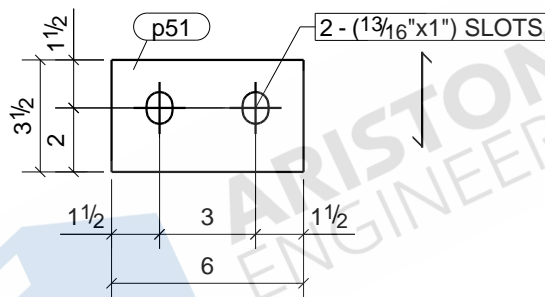
p48	PL3/4"X14"	A36	4	1'-2 1/2"	449	43
MARK	SIZE	GRADE	QTY.	LENGTH	AREA	WEIGHT
MATERIAL LIST FOR WORKSHOP				TOTALS	1795 in ²	173 lb/ft

JOB DRAWING No.		ROCKWELL PARK	
p48		p48	
JOB No.		DESCRIPTION	CAP PLATE
DRAWN BY	ARP	REVISION No.	
DATE DRAWN		REVISION DATE	

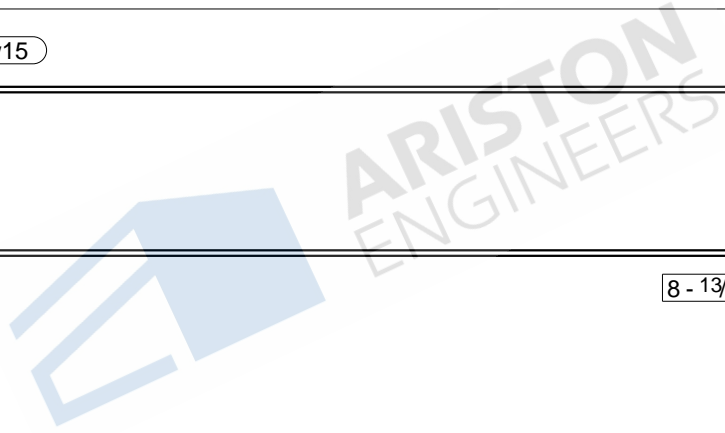
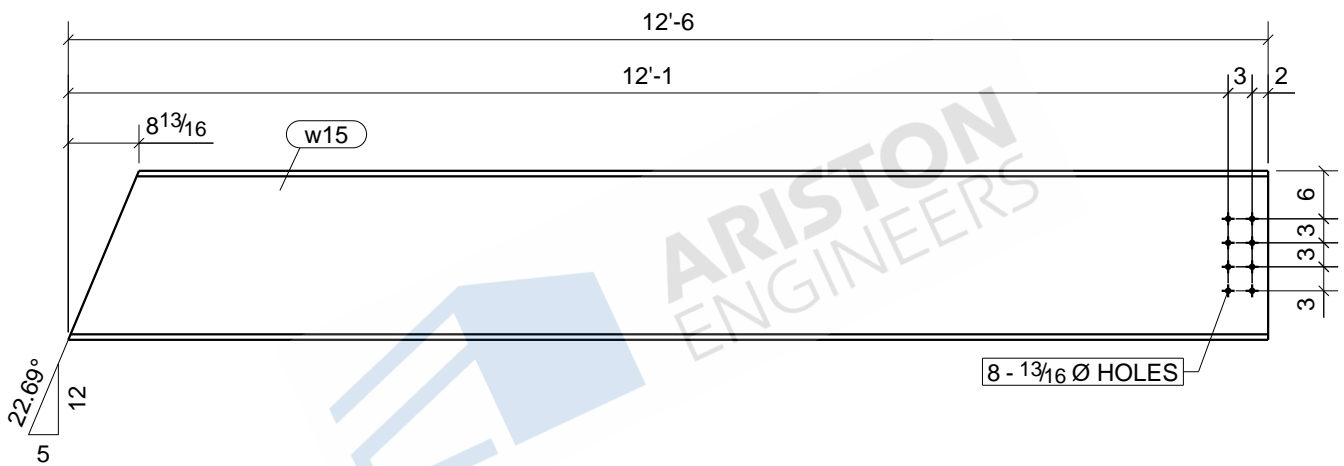


						4	C4
						Qty.	In Assembly
p49	PL3/4"X8 1/8"	A36	4	0'-8 1/4"	159		14
MARK	SIZE	GRADE	QTY.	LENGTH	AREA		WEIGHT
MATERIAL LIST FOR WORKSHOP					TOTALS	635 in ²	57 lb/ft

JOB DRAWING No.		ROCKWELL PARK	
p49		p49	
JOB No.		DESCRIPTION	CAP PLATE
DRAWN BY	ARP	REVISION No.	
DATE DRAWN		REVISION DATE	

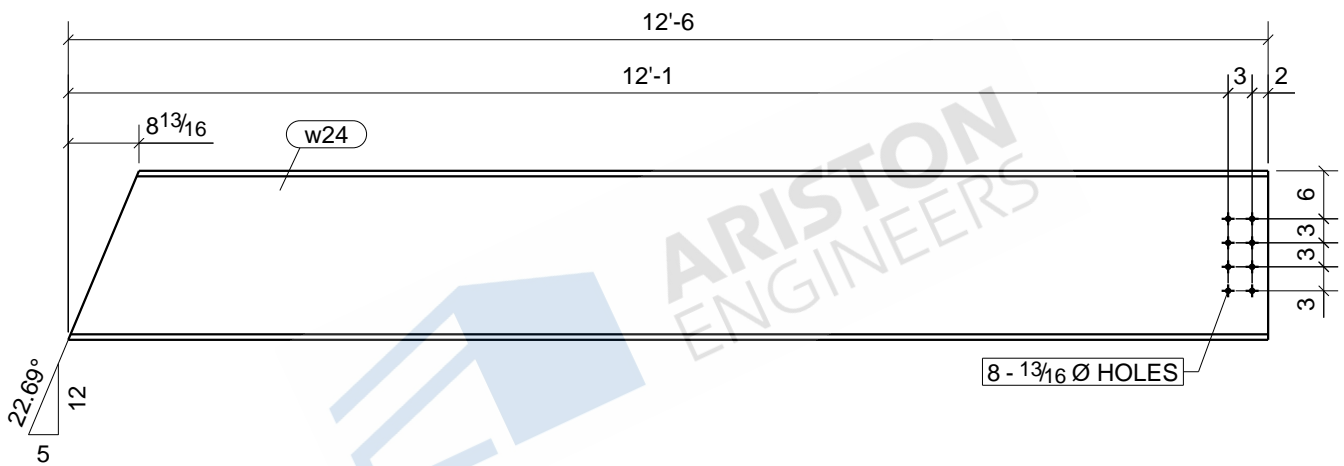


						4	B50
						Qty.	In Assembly
p51	PL3/8"X3 1/2"	A36	4	0'-6"	49		2
MARK	SIZE	GRADE	QTY.	LENGTH	AREA		WEIGHT
MATERIAL LIST FOR WORKSHOP					TOTALS	196 in ²	9 lb/ft
			JOB DRAWING No.		ROCKWELL PARK		
			p51				
			JOB No.		DESCRIPTION		PLATE
			DRAWN BY		REVISION No.		
			DATE DRAWN		REVISION DATE		



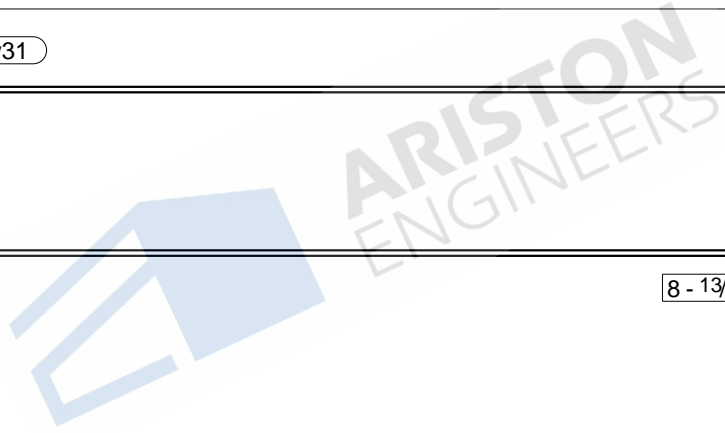
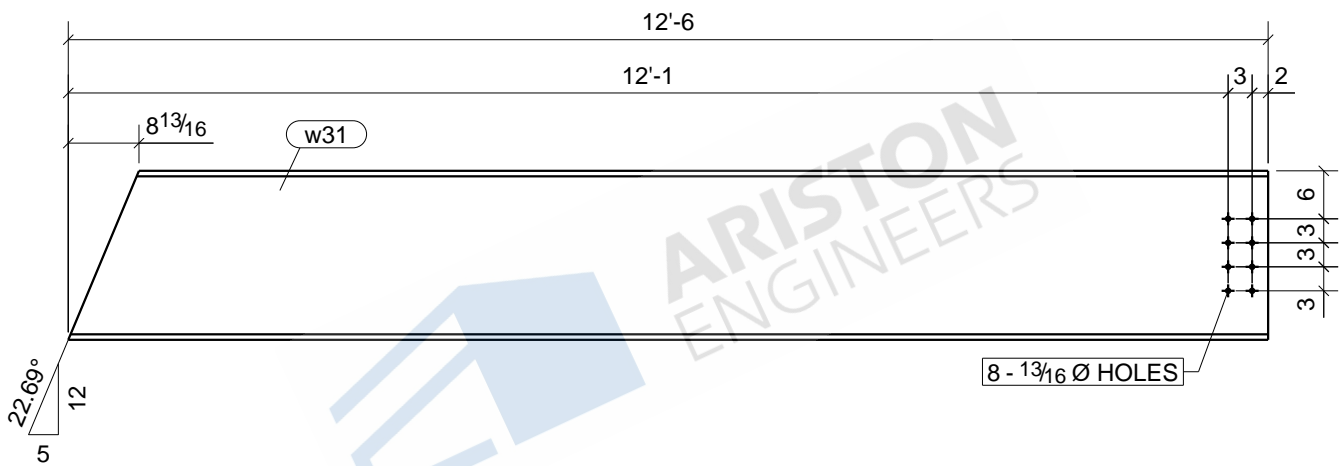
						1	B51
						Qty.	In Assembly
w15	W21X68	A992	1	12'-6"	10868		851
MARK	SIZE	GRADE	QTY.	LENGTH	AREA		WEIGHT
MATERIAL LIST FOR WORKSHOP					TOTALS	10868 in ²	851 lb/ft

JOB DRAWING No.		ROCKWELL PARK	
w15			
JOB No.		DESCRIPTION	BEAM
DRAWN BY	ARP	REVISION No.	
DATE DRAWN		REVISION DATE	

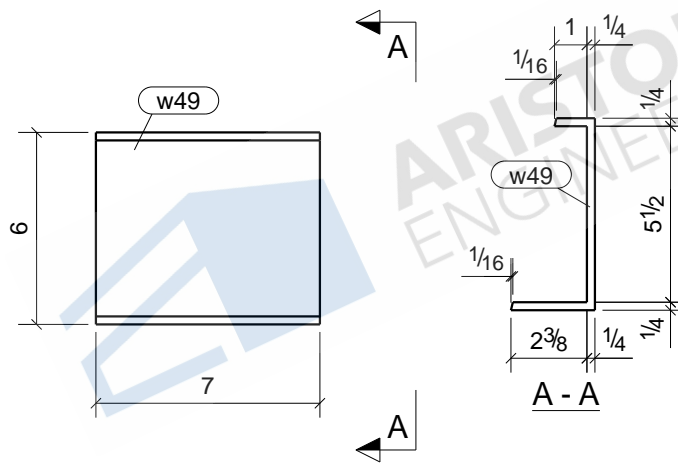


						1	B53
						Qty.	In Assembly
w24	W21X68	A992	1	12'-6"	10868		851
MARK	SIZE	GRADE	QTY.	LENGTH	AREA	WEIGHT	
MATERIAL LIST FOR WORKSHOP					TOTALS	10868 in ²	851 lb/ft

		JOB		ROCKWELL PARK	
		DRAWING No.		w24	
		JOB No.		DESCRIPTION	
		DRAWN BY		REVISION No.	
		DATE DRAWN		REVISION DATE	
		ARP			
				BEAM	



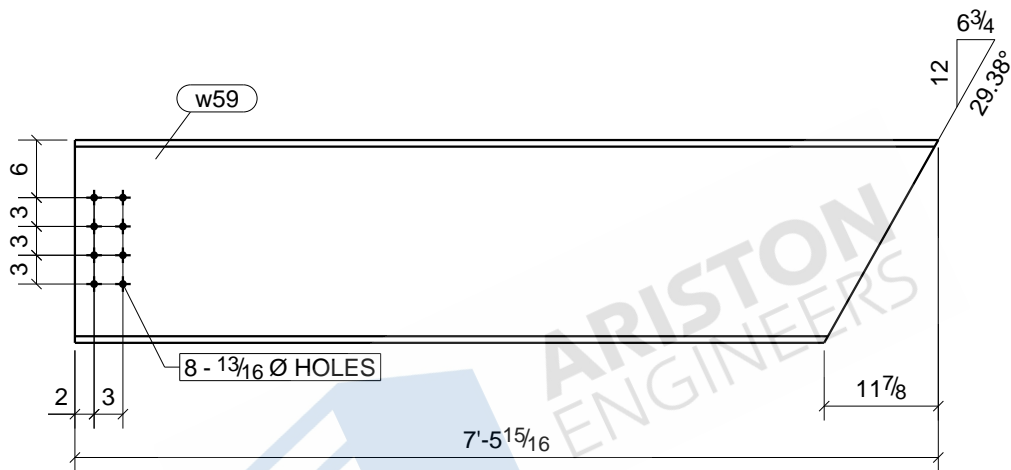
						4	B52
						Qty.	In Assembly
w31	W21X68	A992	4	12'-6"	10868	851	
MARK	SIZE	GRADE	QTY.	LENGTH	AREA	WEIGHT	
MATERIAL LIST FOR WORKSHOP					TOTALS	43471 in ²	3403 lb/ft
			JOB DRAWING No.		ROCKWELL PARK		
			w31				
			JOB No.		DESCRIPTION	BEAM	
			DRAWN BY	ARP	REVISION No.		
			DATE DRAWN		REVISION DATE		



2	B12
4	B18
2	B30
2	B41
Qty.	In Assembly

w49	HSS6X6X1/4	A500-GR.B	10	0'-7"	162	10
MARK	SIZE	GRADE	QTY.	LENGTH	AREA	WEIGHT
MATERIAL LIST FOR WORKSHOP				TOTALS	1621 in ²	104 lb/ft

JOB DRAWING No.		ROCKWELL PARK w49	
JOB No.		DESCRIPTION	BEAM
DRAWN BY	ARP	REVISION No.	
DATE DRAWN		REVISION DATE	



1	B4
1	B16
3	B37
1	B49
Qty.	In Assembly

w59	W21X68	A992	6	7'-5 15/16"	6290	510
MARK	SIZE	GRADE	QTY.	LENGTH	AREA	WEIGHT
MATERIAL LIST FOR WORKSHOP				TOTALS	37740 in ²	3061 lb/ft

JOB DRAWING No.		ROCKWELL PARK w59	
JOB No.		DESCRIPTION	BEAM
DRAWN BY	ARP	REVISION No.	
DATE DRAWN		REVISION DATE	